



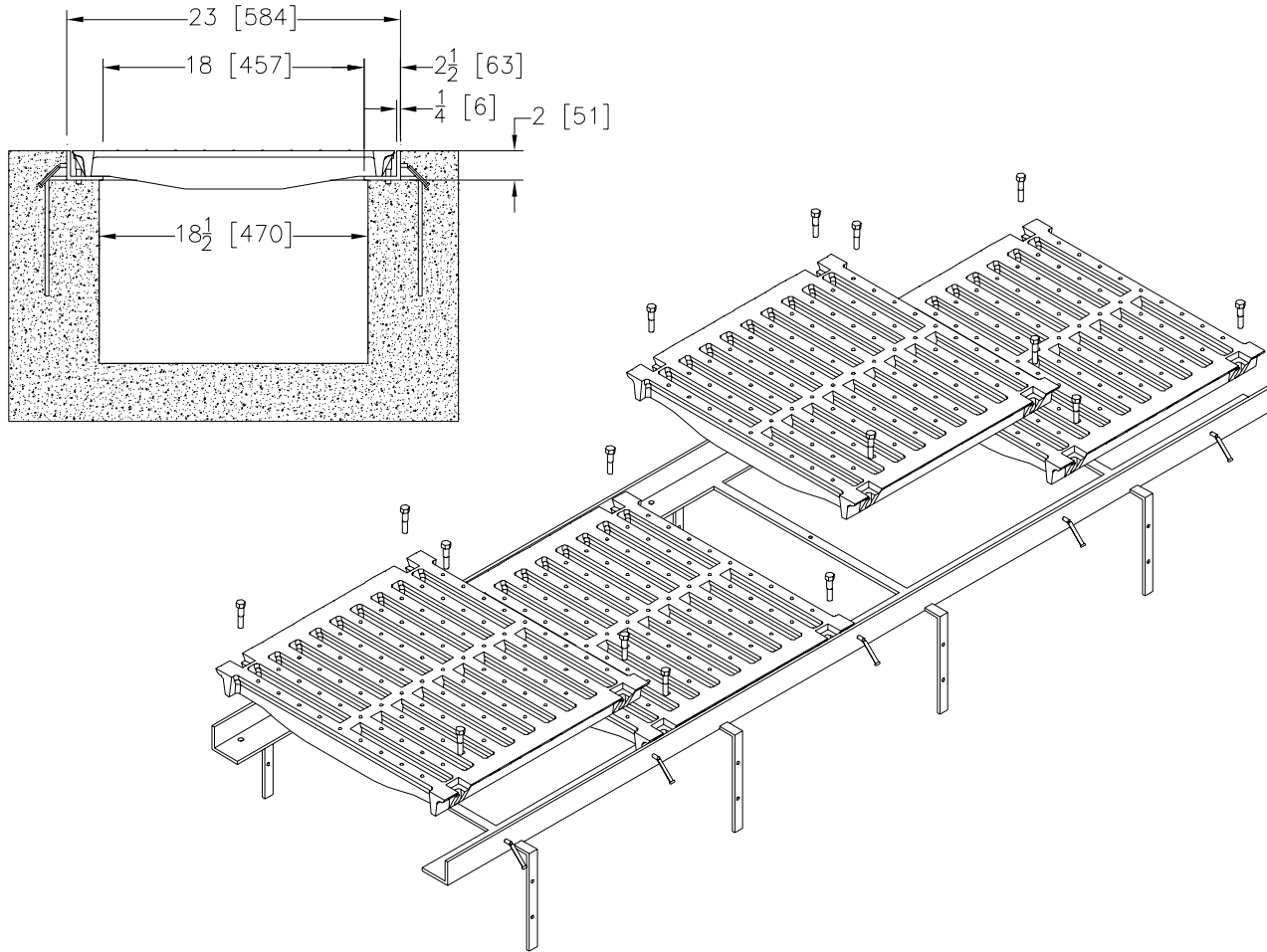
# Z723

## 23 [584] WIDE FRAME AND GRATE SYSTEM

SPECIFICATION SHEET

TAG \_\_\_\_\_

Dimensional Data (inches and [mm]) are Subject to Manufacturing Tolerances and Change Without Notice



**ENGINEERING SPECIFICATION:** Zurn Z723 23 [584] Wide Frame and Grate System. 2 x 2 1/2 x 1/4 [51 x 64 x 6] angle, 80 [2032] long, carbon steel frame assembly. 1/4 x 3 [6 x 76] studs and combination anchor tabs/leveling devices at appropriate locations for embedding into surrounding concrete. Complete with Class C ductile iron slotted grates (-DGC).

**OPTIONS** (Check/specify appropriate options)

**PREFIXES**

\_\_\_ Z 80 [2032] Long Frame with 1/4 x 3 [6 x 76] Long Studs and Dura-Coated Ductile Iron Grate, Class C with Lockdown.\*

**SUFFIXES**

- \_\_\_ -BG Galvanized Steel Bar Grate
- \_\_\_ -DCC Ductile Iron Solid Cover-Class C
- \_\_\_ -DCF Ductile Iron Solid Cover-Class F
- \_\_\_ -DGC Ductile Iron Slotted Grate -Class C
- \_\_\_ -DGF Ductile Iron Slotted Grate -Class F
- \_\_\_ -GDC Galvanized Ductile Iron Grate-Class C
- \_\_\_ -GDF Galvanized Ductile Iron Grate-Class F
- \_\_\_ -GFA Galvanized Frame Assembly
- \_\_\_ -GG Fiberglass Grate
- \_\_\_ -HPD Heel-Proof Ductile Iron Grate
- \_\_\_ -SBG Stainless Steel Bar Grate
- \_\_\_ -SF Stainless Steel Frame Assembly

\*REGULARLY FURNISHED UNLESS OTHERWISE SPECIFIED

|                |                  |                 |
|----------------|------------------|-----------------|
| REV. B         | DATE: 5/15/07    | C.N. NO. 109435 |
| DWG. NO. 94027 | PRODUCT NO. Z723 |                 |