



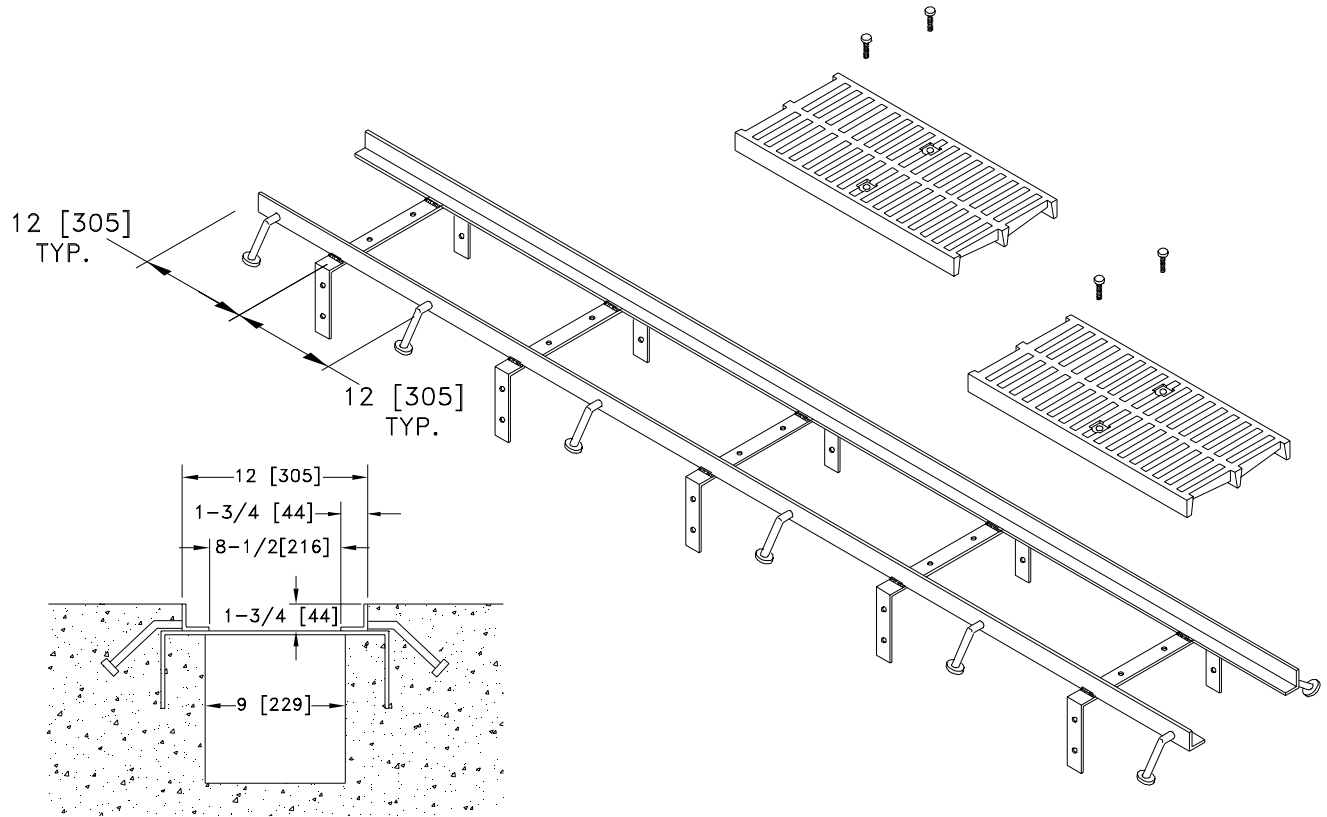
Z712 FRAME AND GRATE

12 [305] WIDE FRAME AND GRATE SYSTEM

SPECIFICATION SHEET

TAG _____

Dimensional Data (inches and [mm]) are Subject to Manufacturing Tolerances and Change Without Notice



ENGINEERING SPECIFICATION: Zurn Extra Heavy Duty 1/4 x 1-3/4 x 1-3/4 - 10-foot long [6 x 44 x 44 -3048] Frame with 1/4 x 3 [6 x 76] long studs and combination anchor tabs/leveling devices at appropriate locations for embedding into surrounding concrete.

OPTIONS (Check/specify appropriate options)

PREFIXES

- _____ **Z** Dura - Coated Carbon Steel Frame
- _____ **ZG** Galvanized Carbon Steel Frame
- _____ **ZS** Type 304 Stainless Steel Frame

SUFFIXES

- _____ **-BDC** Black Acid Resistant Coated Ductile Iron Grate - Class C
- _____ **-BDF** Black Acid Resistant Coated Ductile Iron Grate - Class F
- _____ **-BG** Galvanized Steel Bar Grate
- _____ **-DC** Ductile Iron Solid Cover
- _____ **-DGC** Ductile Iron Slotted Grate - Class C
- _____ **-DGE** Ductile Iron Slotted Grate - Class E
- _____ **-DGF** Ductile Iron Slotted Grate - Class F
- _____ **-FG** Fabricated Galvanized Steel Slotted Grate
- _____ **-FS** Fabricated Stainless Steel Slotted Grate
- _____ **-GDC** Galvanized Ductile Slotted Grate - Class C
- _____ **-GDE** Galvanized Ductile Slotted Grate - Class E

- _____ **-GDF** Galvanized Ductile Slotted Grate - Class F
- _____ **-GFA** Galvanized Frame Assembly
- _____ **-GG** Fiberglass Grate
- _____ **-HPD** Heel-Proof Ductile Slotted Grate
- _____ **-PG** Galvanized Perforated Steel Grate
- _____ **-PS** Perforated Stainless Steel Grate
- _____ **-RC** Rebar Clip Assembly
- _____ **-RFG** Reinforced Galvanized Slotted Grate
- _____ **-RFS** Reinforced Stainless Steel Slotted Grate
- _____ **-RPG** Reinforced Perforated Galvanized Grate
- _____ **-RPS** Reinforced Perforated Stainless Steel Grate
- _____ **-SBG** Stainless Steel Bar Grate
- _____ **-SF** Stainless Steel Frame Assembly
- _____ **-VP** Vandal-Proof Lockdown Assembly

REV. C DATE: 5/15/07 C.N. NO. 109432

DWG. NO. 64018 PRODUCT NO. Z712