

quality . service
innovation . integrity

Model 314



Features

The "High Capacity Water-Mover" utility pump is designed for use in numerous applications. The pump is extremely useful for removing water from water heaters, power washing applications, adding propylene glycol anti-freeze to radiant heating lines, and other water transfer applications. Each pump is built using non-corrodible materials, permanently lubricated ball bearings, and a carbon ceramic shaft seal, ensuring a long service life. Additionally, each pump comes equipped with a 3/4" NPT brass, lead-free garden hose adapter, a suction screen, and an extra set of brushes.

Specifications

Motor Characteristics

Motor	1/2 HP
Voltage	115 V
Phase	1 Ph
Hertz	60 Hz

Pump Characteristics

Operation	Nonautomatic
Discharge Size	3/4" NPT or standard garden hose
Cord Length	20' (6 m) standard
Cord Type	Grounded plug
Max Head	110' (33.5 m)
Max Flow Rate	1400 GPH (5300 LPH)
Max Operating Temp	120° F (49° C) water, 104° F (40° C) air
Cooling	Air

Materials Characteristics

Pump Housing	Cast iron
Mechanical Seals	Carbon and ceramic
Impeller	Engineered thermoplastic

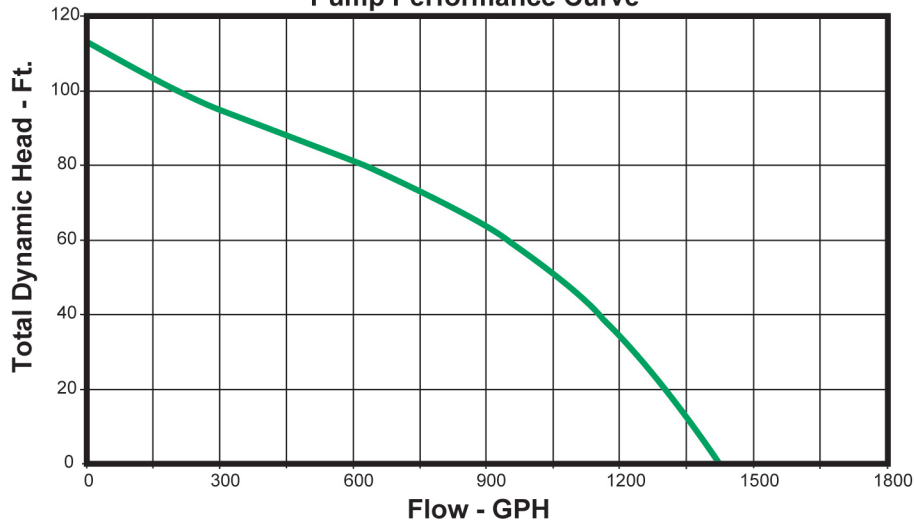


PUMP COMPANY

Zoeller Family of Water Solutions™

Model 314

**"High Capacity" Water Mover
Pump Performance Curve**



IL0153

Model

Model Number	Seal	Mode	Volts	Phase	HP	CSA/UL	Hz	Lbs	Kg
314	Single	Non	115	1	1/2	Y/N	60	17	8

Your Peace of Mind is Our Top Priority®

3649 Cane Run Rd | Louisville, KY 40211 USA

+1 502-778-2731 | 1-800-928-7867 | Fax: +1 502-774-3624

www.zoeller.com

Product information presented here reflects conditions at time of publication. Consult factory regarding discrepancies or inconsistencies.

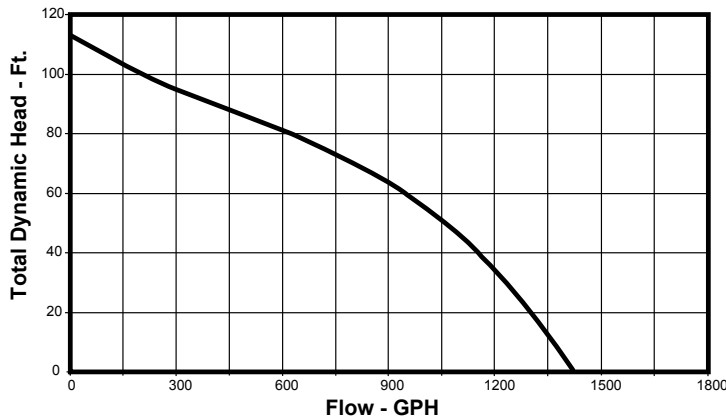
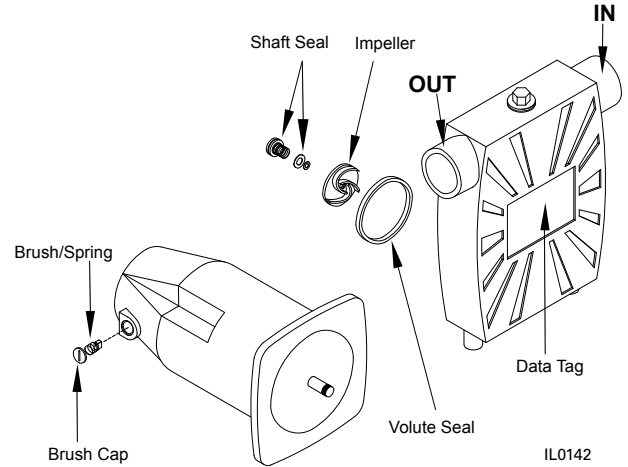
TECHNICAL DATA SHEET

HIGH-CAPACITY WATER MOVER SERIES

Model 314 Non-Submersible Utility Pump

PRODUCT SPECIFICATIONS

MOTOR	Horse Power	1/2
	Voltage	115
	Phase	1 Ph
	Hertz	60 Hz
PUMP	Operation	Nonautomatic
	Discharge Size	3/4" NPT brass or standard garden hose
	Cord Length	20' (6 m) standard
	Cord Type	grounded plug
	Max. Head	110' (33.5 m)
	Max. Flow Rate	1400 GPH (5300 LPH)
	Max. Operating Temp.	120° F (49° C) water, 104° F (40° C) air
Cooling	Air	
MATERIALS	Pump Housing	Cast iron
	Mechanical Seals	Carbon and ceramic
	Impeller	Engineered plastic
	Weight	17 lbs. (8 kg)



IL0153

TOTAL DYNAMIC HEAD FLOW PER HOUR

Model	Volts	Max. Flow 1' (.3 m) Head	Shut-Off Head
314-0002	115V	1400 GPH (5300 LPH)	110' (33.5 m)



NOTE: Each pump is equipped with a suction screen and an extra set of brushes



Tested to UL Standard 778 and
Certified to CSA Standard 227875

