

Model 342-P

40 Series

Cast Brass Laundry Faucet



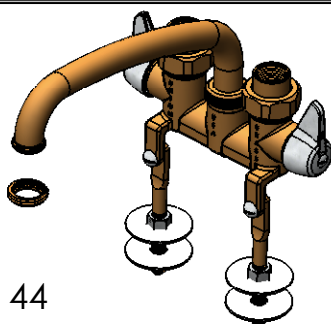
Features : Renew valves

Cast Brass Bodies

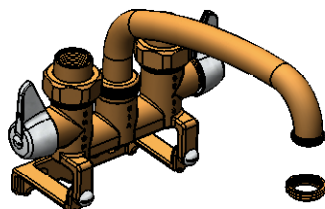
8" tube or 6" cast Spout

C-N-I Fitz all unions supplies
1/2" Female Copper & 1/2" NPT

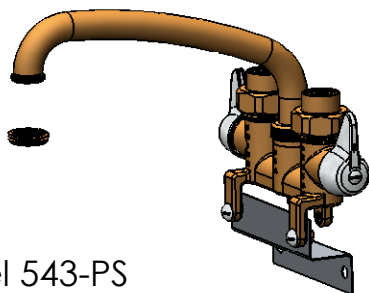
3" Centers on Supplies



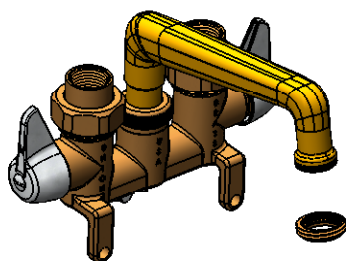
Model 44



Model 43



Model 543-PS



Model 746

3" Center Compression Valve

Model	Description
42	8" Tube Spout w/ Bracket Clamps
43	8" Tube Spout w/ wall Bracket Mounting Plate
43-S	8" Tube Spout w/ Stainless Steel Wall Bracket
44	8" Tube Spout w/ Threaded legs (For Shelf type Trays)
46	8" Tube Spout with bolt (no brackets)
342	6" Cast Spout w/ Bracket Clamps
343	6" Cast Spout w/ wall Bracket Mounting Plate
343-S	6" Cast Spout w/ Stainless Steel Wall Bracket
344	6" Cast Spout w/ Threaded legs (For Shelf type Trays)
346	6" Cast Spout with bolt (no brackets)

3" Centers- 1/4Turn Valves

Model	Description
542	8" Tube Spout w/ Bracket Clamps
543	8" Tube Spout w/ wall Bracket Mounting Plate
543-S	8" Tube Spout w/ Stainless Steel Wall Bracket
544	8" Tube Spout w/ Threaded legs (For Shelf type Trays)
546	8" Tube Spout with bolt (no brackets)
742	6" Cast Spout w/ Bracket Clamps
743	6" Cast Spout w/ wall Bracket Mounting Plate
743-S	6" Cast Spout w/ Stainless Steel Wall Bracket
744	6" Cast Spout w/ Threaded legs (For Shelf type Trays)
746	6" Cast Spout with bolt (no brackets)

Special Ordering Note: If you want a drain plug hole in the bottom of the casting then add a (P) to the end of the order number I.E. (44 = 44P)

American Craftsmanship Since 1892

When Ordering Specify Complete Model Number