

SUPERSEDES: May 1, 2011

EFFECTIVE: November 15, 2013

Job: \_\_\_\_\_

Quantity	Item No.	Model No.	Precharge*	Working Pressure
----------	----------	-----------	------------	------------------

\*Unless otherwise specified, standard precharge of 12 PSIG. (83 KPa)

### CONSTRUCTION

- Seamless bladder type for permanent separation of air and water.
- Water expands into bladder. Air precharge on shell side.

### SPECIFICATIONS

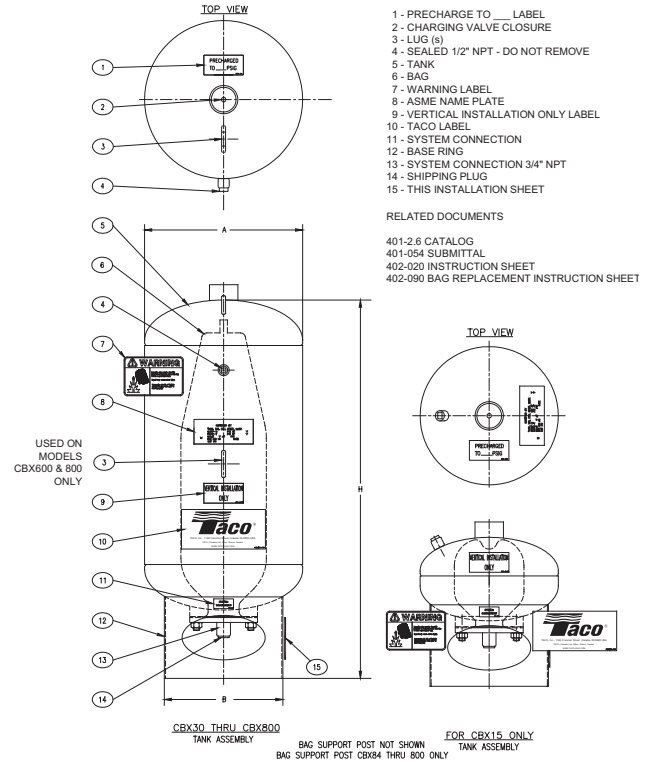
- Shell – Fabricated Steel designed and constructed per ASME Section VIII, Div. 1.
- Bladder – Heavy Duty Butyl removable for inspection.
- Working Pressure – 125 PSIG (862 KPa) (150 PSIG optional).
- Operating Temperature – 240°F (116°C) Max.
- Lifting rings not included on CBX 15, CBX 30 and CBX 42.
- Not for use with potable water.
- **VERTICAL INSTALLATION ONLY.**

### APPLICATIONS

- Hydronic Expansion Tank
- Non-Potable Hydropneumatic and Drawn Down Applications

### DIMENSIONS

All dimensions shown are subject to change and should not be used for pre-piping. Contact your local Taco representative should certified dimensional drawings be required.



MODEL NUMBER	TANK VOLUME		ACCEPT. VOLUME		H HEIGHT		A DIAMETER		B DIAMETER		APPROX. SHIPPING WEIGHT	
	GAL.	LIT.	GAL.	LIT.	INCH	MM	INCH	MM	INCH	MM	LBS.	Kg
CBX15-125	4	15	2.5	9.5	15	381	14	356	12	305	45	20
CBX30-125	8	30	5	19	22 3/16	564	14	356	12	305	90	41
CBX42-125	11	42	5	19	27 3/16	690	14	356	12	305	105	48
CBX84-125	22	84	12	45	38 9/16	980	16	406	12	305	150	68
CBX130-125	34	130	19	72	37 5/16	948	20	508	16	406	200	91
CBX170-125	45	170	24	91	43 5/8	1108	20	508	16	406	240	109
CBX254-125	67	254	34	129	48 13/16	1240	24	610	20	508	280	127
CBX300-125	79	300	43	163	55 5/16	1405	24	610	20	508	300	136
CBX350-125	92	350	43	163	62 5/16	1583	24	610	20	508	330	150
CBX425-125	112	425	61	231	69	1753	24	610	20	508	380	172
CBX500-125	132	500	61	231	79 7/16	2018	24	610	20	508	425	193
CBX600-125	160	600	61	231	68 1/8	1730	30	762	24	610	515	234
CBX800-125	212	800	61	231	86 1/8	2188	30	762	24	610	605	275

COMMENTS: \_\_\_\_\_

