



T&S BRASS AND BRONZE WORKS, INC.

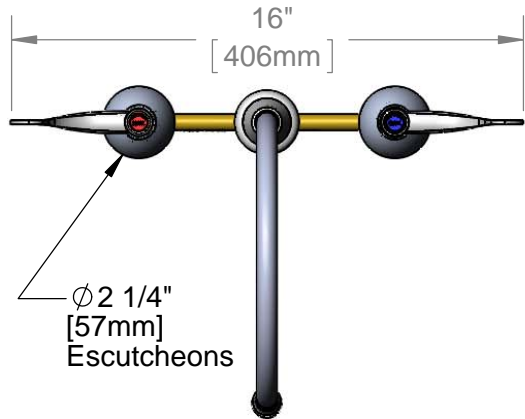
2 Saddleback Cove / P.O. Box 1088
Travelers Rest, SC 29690

Model No.

B-2347-05

Item No.

Travelers Rest, SC: 800-476-4103 • Simi Valley, CA: 800-423-0150 • Fax: 864-834-3518 • www.tsbrass.com



This Space for Architect/Engineer Approval

Job Name _____ Date _____

Model Specified _____ Quantity _____

Customer/Wholesaler _____

Contractor _____

Architect/Engineer _____

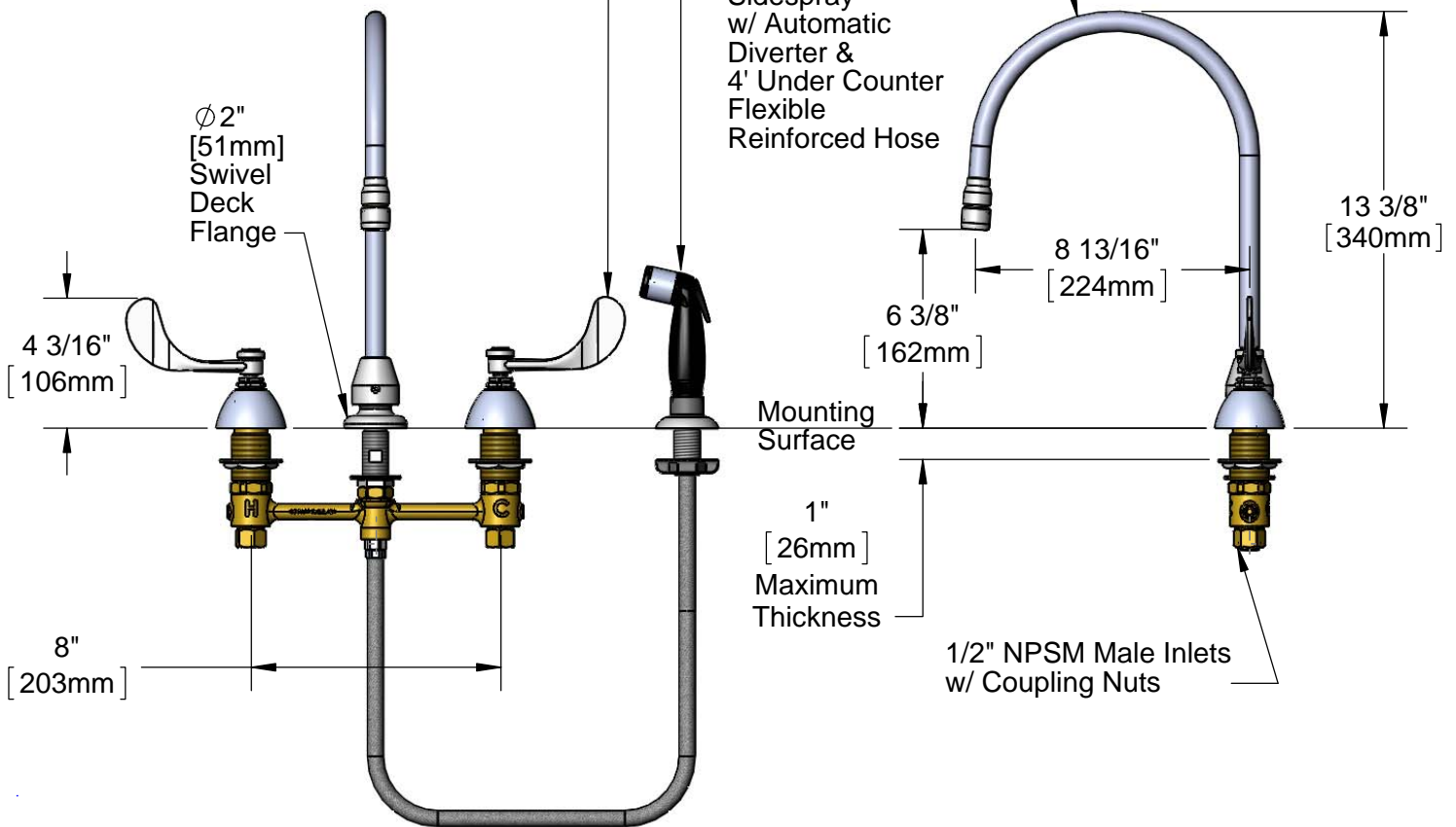


ADA Compliant

Swivel Gooseneck w/
B-0199-02
2.2 GPM Aerator Outlet

Eterna Cartridges &
4" Wrist Action Handles
w/ Color Coded Indexes

Black & Chrome
Sidespray
w/ Automatic
Diverter &
4' Under Counter
Flexible
Reinforced Hose



Rough-In Requirement:

Ø 1" [25mm] for Center Shank

Ø 1 1/2" [38mm] for Hot/Cold Side

Product Specifications:

8" Deck Mount EasyInstall Mixing Faucet w/ 4' Sidespray, Eterna Cartridges, 4" Wrist Action Handles, Gooseneck w/ 2.2 GPM Aerator Outlet & 1/2" NPSM Male Inlets w/ Coupling Nuts

Product Compliance:

ASME A112.18.1 / CSA B125.1
NSF 61 - Section 9
NSF 372 (Low Lead Content)
ANSI A117.1 (ADA)

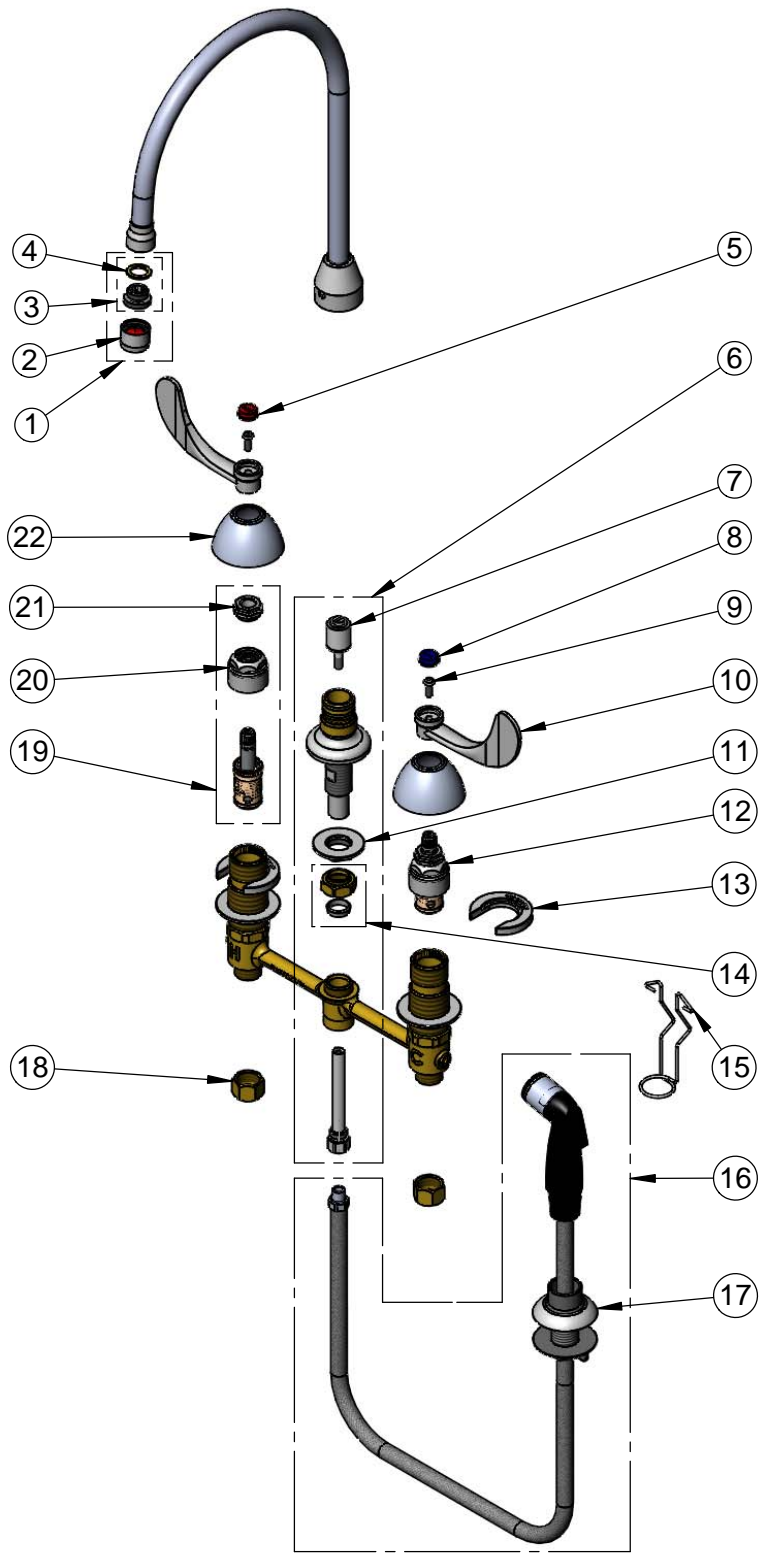


T&S BRASS AND BRONZE WORKS, INC.
 2 Saddleback Cove / P.O. Box 1088
 Travelers Rest, SC 29690

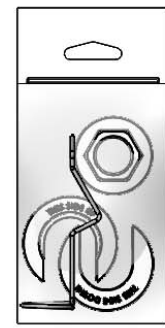
Model No.
B-2347-05

Item No.

Travelers Rest, SC: 800-476-4103 • Simi Valley, CA: 800-423-0150 • Fax: 864-834-3518 • www.tsbrass.com



ITEM NO.	SALES NO.	DESCRIPTION
1	B-0199-02	2.2 GPM Aerator, 3/8" NPSM Male
2	B-0199-01	2.2 GPM Aerator, 55/64-27 UN Female
3	044A	3/8" to Aerator Adapter
4	001043-45	Washer
5	001194-45	Red Index-HW
6	017208-40	Center Body Diverter
7	002338-45	Valve Diverter Piston
8	001686-45	Blue Index-CW
9	000925-45	Lab Handle Screw
10	B-WH4	4" Wrist Action Handle
11	016742-45	Center Flange Nut
12	016752-40	EasyInstall CWS LTC Eterna (Teflon)
13	016749-45	Sidebody C-Washer
14	016745-45	Compression Nut & Fitting
15	016777-45	CWS Hanger
16	001495-45	4' Sidespray w/ Hose Guide
17	001496-45	Hose Guide
18	000958-20	Coupling Nut
19	016753-40	EasyInstall CWS RTC Eterna (Teflon)
20	016743-25	CWS Eterna Bonnet
21	009002-25	Packing
22	001257-40	Bell Escutcheon



017245-40
 Installation Repair Kit
 Includes #11, (2)#13, & #15

Product Specifications:
 8" Deck Mount EasyInstall Mixing Faucet w/ 4' Sidespray, Eterna Cartridges, 4" Wrist Action Handles, Gooseneck w/ 2.2 GPM Aerator Outlet & 1/2" NPSM Male Inlets w/ Coupling Nuts

Product Compliance:
 ASME A112.18.1 / CSA B125.1
 NSF 61 - Section 9
 NSF 372 (Low Lead Content)
 ANSI A117.1 (ADA)