



# T&S BRASS AND BRONZE WORKS, INC.

2 Saddleback Cove / P.O. Box 1088  
Travelers Rest, SC 29690

Model No.

**B-1453**

Item No.

Travelers Rest, SC: 800-476-4103 • Simi Valley, CA: 800-423-0150 • Fax: 864-834-3518 • www.tsbrass.com

This Space for Architect/Engineer Approval

Job Name \_\_\_\_\_ Date \_\_\_\_\_

Model Specified \_\_\_\_\_ Quantity \_\_\_\_\_

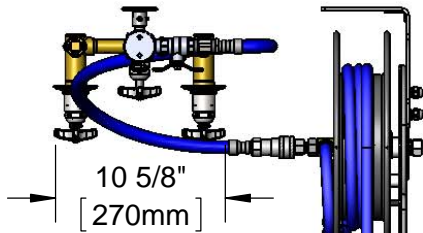
Customer/Wholesaler \_\_\_\_\_

Contractor \_\_\_\_\_

Architect/Engineer \_\_\_\_\_

B-0963

Continuous Pressure  
Vacuum Breaker  
w/ Integral  
Check Valve



3/8" NPT x 36"  
Flexible Water  
Connector

3/8" NPT x 40"  
Riser

Stainless Steel  
Quick Disconnect

Control Valve

(2) B-0109-07  
Wall Brackets

3/8" NPT x 16"  
Riser

8"  
[203mm]

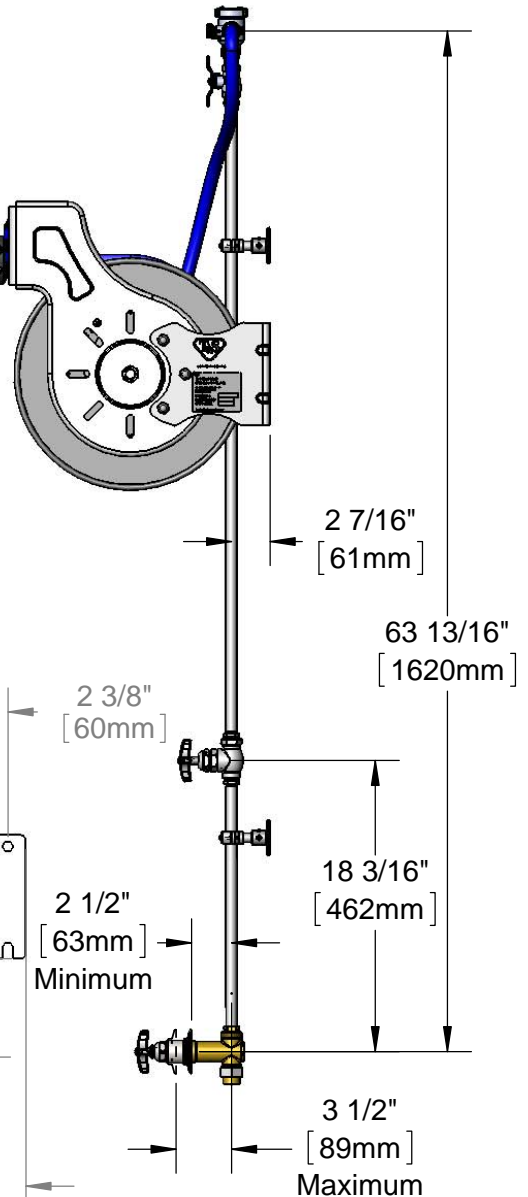
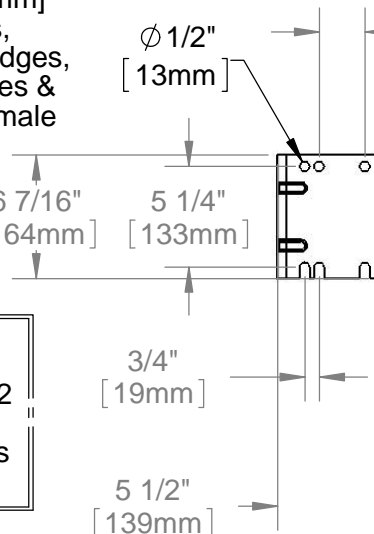
Rough-In Requirement:  
(2)  $\varnothing$  1 1/2" [38mm] Mounting Holes

Open Coated Hose Reel  
w/ 35' of 3/8" Hose

Front Trigger  
Water Gun

8" Concealed  
Mixing Valve w/  
 $\varnothing$  2 5/8" [67mm]  
Wall Flanges,  
Eterna Cartridges,  
4-Arm Handles &  
1/2" NPT Female  
Inlets

(2) B-CVH1-2  
1/2" NPT  
Check Valves  
(Included)



## Product Specifications:

Open Coated Hose Reel w/ 35' of 3/8" Hose, Blue Front Trigger Water Gun, Vacuum Breaker, 3/8" NPT Flexible Water Connector, 8" Concealed Wall Mount Mixing Faucet, Control Valve & (2) Check Valves

## Product Compliance:

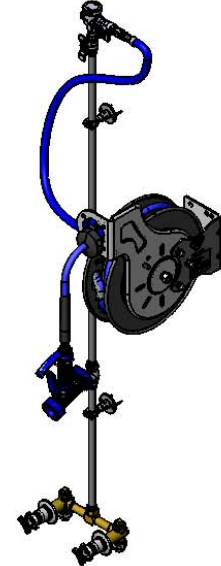
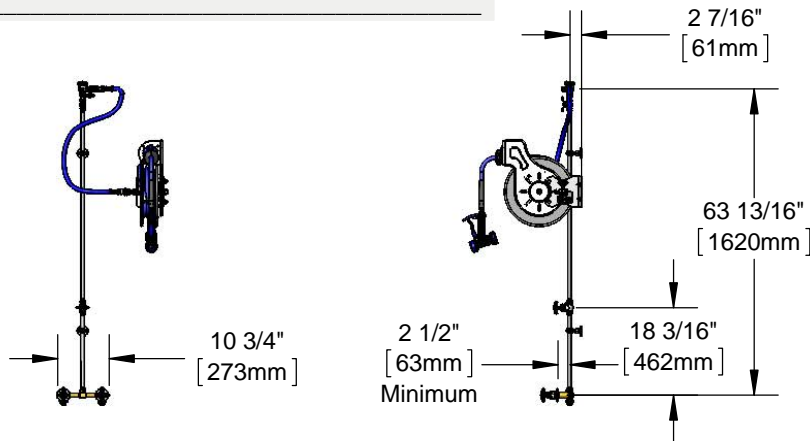
NSF 61 Exempt (Non-Potable)  
EPA Act 2005 Non-Compliant (PRSV)  
ASSE 1056 (VB)



### Architect/Engineering Specifications:

8" wall mount concealed mixing faucet with chrome plated escutcheon with rough brass body, compression cartridges, 4-arm handles, 1/2" NPT female union inlets, 1/2" NPT in-line check valves with 1/2" NPT female inlets, 16" riser, control valve, 40" riser, wall brackets, continuous pressure vacuum breaker, 36" flexible water hose connector with stainless steel quick disconnect, open coated hose reel with 3/8" x 35' heavy-duty non-marking hose, ratcheting system, high flow stainless steel front trigger water gun, multi-fit bracket and adjustable hose bumper. Certified to ASSE 1056.

Job Name \_\_\_\_\_  
 Model Specified \_\_\_\_\_ Quantity \_\_\_\_\_  
 Variations Specified \_\_\_\_\_  
 Date \_\_\_\_\_



### Features & Benefits:

- All-in-one system with exposed piping and accessories
- 8" wall mount concealed mixing faucet w/ chrome plated escutcheon and rough brass body
- Eterna compression cartridges
- 4-arm handles w/ color coded indexes
- Mixing faucet, 1/2" NPT female union inlets
- 1/2" NPT in-line check valves w/ 1/2" NPT female inlets
- 16" and 40" risers w/ control valve between risers
- (2) 2 3/8" wall brackets
- Continuous pressure vacuum breaker
- 36" flexible water hose connector with stainless steel quick disconnect
- Open coated hose reel
- High flow stainless steel water gun w/ blue rubber cove, front style trigger &  $\phi 5/16"$  flow orifice
- 3/8" x 35' heavy-duty non-marking hose rated to 300 PSI
- Ratcheting system holds the length of hose until a slight tug to retract automatically
- Adjustable hose bumper
- Multi-fit bracket for wall, ceiling or under counter mounting
- Material: Polished chrome plated brass faucet body, risers and spray valve body, chrome plated metal handles, control valve and vacuum breaker and metal open reel.

### Product Compliance:

- NSF 61 Exempt (Non-Potable)
- EPA 2005 Non-Compliant (PRSV)
- ASSE 1056 (VB)



### Warranty: One Year (Limited)

- Hose Reel: Two Year (Limited)
- Hose: 90 Day (Limited)

### Performance Data:

- Pressure: 20 - 125 psi
- Temperature: 40°F - 140°F
- Flow Rate: 2.93 GPM @ 60 psi

### Optional Cartridges With Checks

- ☐ Quarter Turn Cerama w/ Check Valve
- ☐ Eterna (Standard)
- ☐ Quarter Turn Eterna w/ Spring Check

### Optional Hose Reel Spray Valves

- |                                     |  |
|-------------------------------------|--|
| <input type="checkbox"/> B-0107     | Spray Valve  |
| <input type="checkbox"/> B-0108     | Ergonomic Medium Flow Spray Valve                  |
| <input type="checkbox"/> B-0108-H   | Ergonomic High Flow Spray Valve                    |
| <input type="checkbox"/> EB-0107    | High Flow Spray Valve                              |
| <input type="checkbox"/> EB-2322    | Extended Spray Wand                                |
| <input type="checkbox"/> MV-2516-24 | Stainless Steel Rear Trigger Water Gun             |
| <input type="checkbox"/> MV-2522-24 | Stainless Steel Front Trigger Water Gun (Standard) |
| <input type="checkbox"/> MV-3516-24 | Aluminum Rear Trigger Water Gun                    |





# T&S BRASS AND BRONZE WORKS, INC.

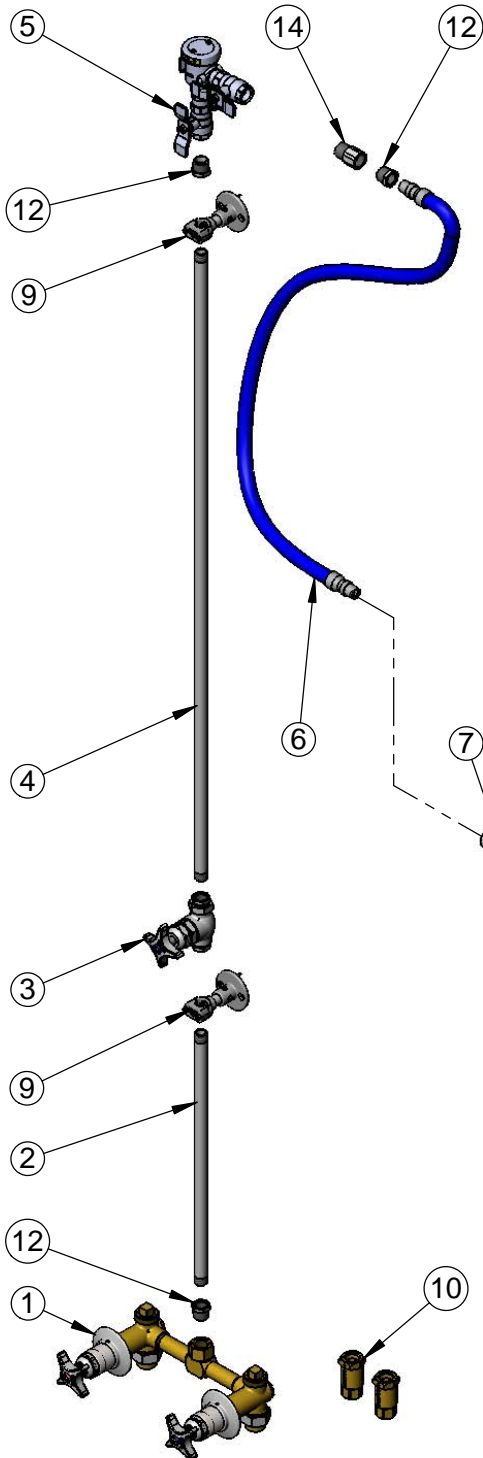
2 Saddleback Cove / P.O. Box 1088  
Travelers Rest, SC 29690

Model No.

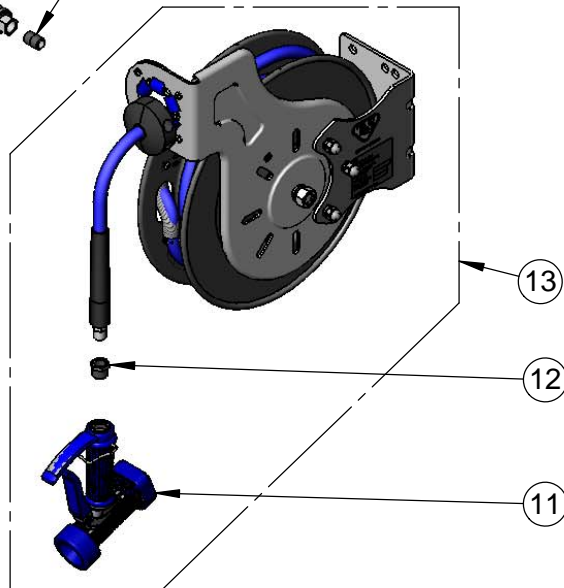
**B-1453**

Item No.

Travelers Rest, SC: 800-476-4103 • Simi Valley, CA: 800-423-0150 • Fax: 864-834-3518 • www.tsbrass.com



ITEM NO.	SALES NO.	DESCRIPTION
1	B-1035	8" Concealed Wall Mount Mixing Valve
2	000368-40	3/8" NPT x 16" Riser
3	0RK3	Control Valve
4	002558-40	3/8" NPT x 40" Riser
5	B-0963	1/2" NPT Continuous Pressure VB w/ Integral Check Valve
6	HW-2B-36	3/8" NPT x 36" Flexible Water Hose
7	AW-5B	3/8" NPT Quick Disconnect
8	002535-25	3/8" NPT Close Nipple
9	B-0109-07	Wall Bracket
10	B-CVH1-2	1/2" Check Valve
11	MV-2522-24	Stainless Steel Water Gun, Front Trigger
12	001359-40	1/2" NPT Male x 3/8" NPT Female Hex Bushing
13	B-7232-05	3/8" x 35 FT Reel w/ Front Trigger Water Gun
14	015073-40	Check Valve w/ 1/2" NPT Adapter



## Product Specifications:

Open Coated Hose Reel w/ 35' of 3/8" Hose, Blue Front Trigger Water Gun, Vacuum Breaker, 3/8" NPT Flexible Water Connector, 8" Concealed Wall Mount Mixing Faucet, Control Valve & (2) Check Valves

## Product Compliance:

NSF 61 Exempt (Non-Potable)  
EPA Act 2005 Non-Compliant (PRSV)  
ASSE 1056 (VB)