



MF-2F & MF-2W Double Laundry Tubs

LAUNDRY TUBS AND UTILITIES

Manufactured from Veritek®
(see page 2 for detailed information)

WARRANTY
Limited 1-year – Residential
Limited 1-year – Commercial

FEATURES

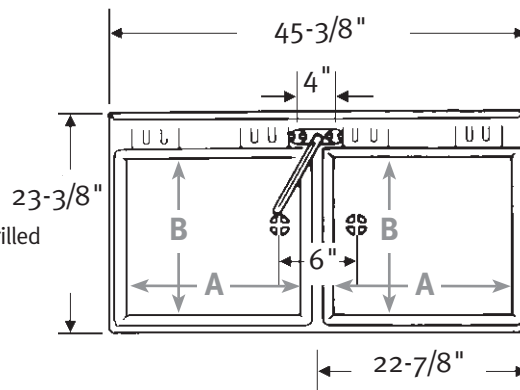
- Made of sturdy Veritek with no surface coating to chip or crack
- Will not mold or mildew

MF-2F Floor Model

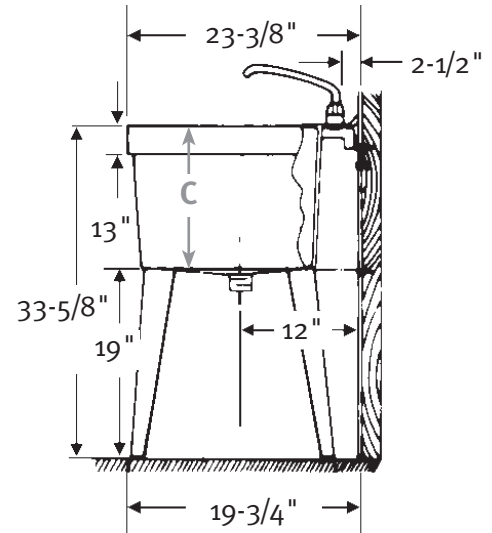
- 4 angular steel legs
- 4" centers are marked but not drilled
- Installed drain
- 44 gallon capacity (166L)
- Molded-in wash board

MF-2W Wall Mounted Model

- Wall bracket assembly
- 4" centers are marked but not drilled
- Installed drain
- 44 gallon capacity (166L)
- Molded-in wash board



MF-2F Floor Model
23-3/8" D x 45-3/8" W
(594 mm x 1153 mm)
A 22", B 19-1/8", C 13-5/8"



SPECIFICATIONS

MF-2F & MF-2W Veritek® Double Laundry Tubs

Model	Part	Dimensions	Ship Wt. Lb.	Ship FedEx	Carton Dims. In.	Cu. Ft.
MF-2F Floor Model	MF20000FM	23-3/8" D x 45-3/8" W (594 mm x 1153 mm)	49	FedEx	47 x 24 x 18	11.75
MF-2W Wall Model	MF20000WM	23-3/8" D x 45-3/8" W (594 mm x 1153 mm)	49	FedEx	47 x 24 x 18	11.75

MF-2F Includes: One double tub, factory installed drain, one set of angular steel legs (4) with hardware, twin waste and complete installation instructions.

MF-2W Includes: One double tub, factory installed drain, wall bracket assembly, twin waste and complete installation instructions.

Packaging: Packed in individual cartons only. Not available in 6-pack.

COLORS

(See inside back cover for color sample.)

- White (010)

STANDARDS AND RATINGS

American National Standard Institute—ANSI Z124.6

International Association of Plumbing and Mechanical Officials (IAPMO)—listed

cUPC listed—Certified to CSA Standard B45 by IAPMO

American Society for Testing and Materials

National Electrical Manufacturers Association

SUPPORT DOCUMENTS

Installation instructions available on line at www.swanstone.com

MADE IN USA.

MAINTENANCE AND CLEANING INFORMATION

Everyday cleaning with liquid cleaners such as Dow or Lysol foaming bubbles, Top Job, Mr. Clean or similar type products with a sponge or Mr. Clean Magic Eraser. To remove hard water stains or mineral build-up, scale removers such as Lime Away, Rust-out or Whink are recommended. **Do not** use abrasive cleaners or pads such as Ajax, Comet, SOS, Brillo or other similar metal scouring pads.