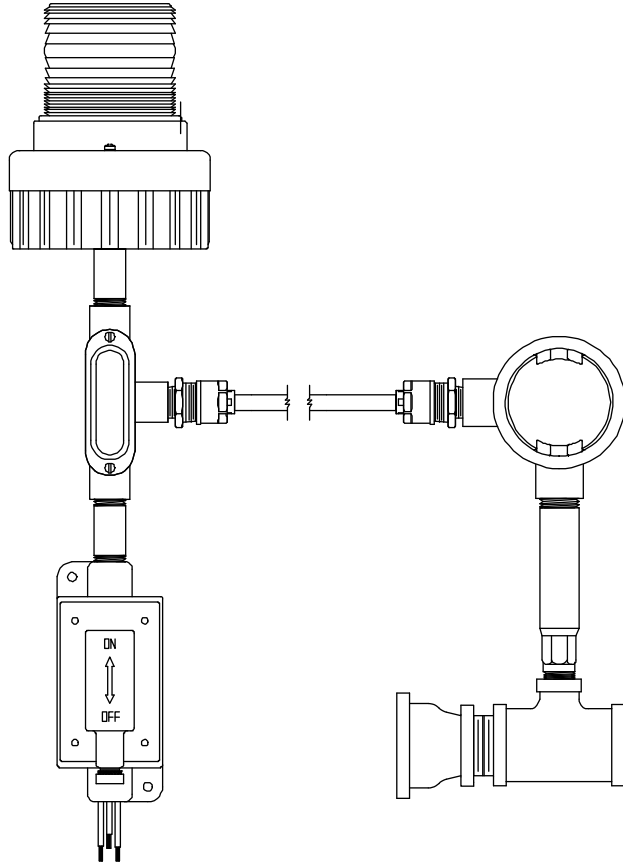


SPEAKMAN[®]

Alarm System

AL-3

SPECIFICATION



FEATURES:

- Emergency equipment alarm
- Electric audio: 85dB @10 Ft.
- Visual flashing light: 60/75 Flashes per minute, amber dome, LED lamps
- Activated by 3/4" Vapor Proof Flow Switch
- Electrical Supply: 120 VAC, 60 Cycle, Single Phase.
- Electrical rating: 0.03 Amps @ 120 VAC.
- Silencing switch.

COMPLIANCE:

- Rated for NEMA 3R outdoor/wet locations in Non-Hazardous Locations.

OPTIONS

- Double pole, double throw flow switch for remote locations -DPDT
- Blue dome
- Red dome
- Clear dome
- Green dome

WARRANTY:

- 3 year limited

SEE REVERSE FOR ROUGH-IN DIMENSIONS

THIS SPACE FOR ARCHITECT/ENGINEER APPROVAL.

SPEAKMAN[®]

400 ANCHOR MILL ROAD | NEW CASTLE, DE 19720
P: 800-537-2107 | F: 800-977-2747
WWW.SPEAKMANCOMPANY.COM

REVISION DATE: JANUARY 2014

Management Systems
Registered to ISO 9001

SPEAKMAN®

Alarm System AL-3

SPECIFICATION

THIS SPACE FOR ARCHITECT/ENGINEER APPROVAL.

SPEAKMAN®

400 ANCHOR MILL ROAD | NEW CASTLE, DE 19720
P: 800-537-2107 | F: 800-977-2747
WWW.SPEAKMANCOMPANY.COM

Management Systems
Registered to ISO 9001

REVISION DATE: JANUARY 2014