

► **Description**

Quadruple Station Solid Surface Lavatory System Equipped with Sloan OPTIMA® Electronic Sensor Technology.

► **Specifications**

Quadruple Station Lavatory System with Sloan Electronic Sensor Technology with the following features:

- Lavatory constructed of Non-porous SloanStone Solid Surface Material
- Lavatory supported by a heavy duty, 14 gauge, Type 304 stainless steel, brushed stainless Pedestal with 14 gauge galvanized steel Mounting Plate
- Single continuous basin design
- Stainless steel drain cover with 1½" drain spud
- Sloan Optima Electronic Sensor Technology for hands free operation
- Lavatory System is shipped pre-plumbed with Sloan Electronic Controls for easy installation
- Below deck Thermostatic Mixing Valve, standard
- Front access panels for easy maintenance access

► **Sloan Optima® Electronics feature:**

- Sloan Optima Sensor Technology for reliable performance
- Troubleshooting LED Indicator Lights
- Filtered Solenoid with serviceable Strainer Filter
- Stainless Steel vandal resistant Spouts
- Water saving 0.5 gpm/1.9 Lpm max. Aerator
- Hardwire powered

► **Variations**

- SD - Soap Dispenser
- FM - Floor Mounted



► **The New SloanStone™ Lavatory System — The Perfect Match**

Hygienic and durable, SloanStone™ is stain, chemical, scratch and impact resistant. A rugged stainless steel frame supports the structure and ensures its unrivaled stability and strength, while still providing the fastest and easiest installation and maintenance available.

The performance and dependability of Sloan Optima® faucets are combined with the durability and versatility of solid surface in the new SloanStone™ Lavatory System. Hygienic and durable, SloanStone™ is stain, chemical, scratch and impact resistant. SloanStone™ sinks can be provided with any one of Sloan's many battery or hardwire Optima® sensor activated faucets and soap dispensers, providing the ultimate in water conservation and hygiene. These features, combined with the unique styling and myriad color options of our solid surface, make SloanStone™ the perfect choice for virtually any restroom installation.

The "hands-free" operation of a SloanStone™ Optima® Electronic Lavatory System ensures hygiene while maintaining an aesthetically pleasing look that is suited for any public rest room installation.

► **Compliance & Certifications**

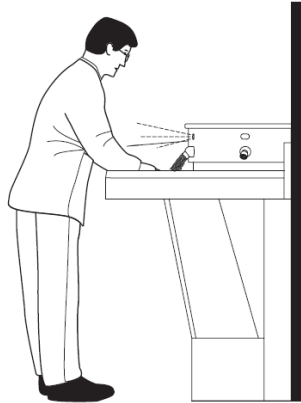
Sloan Optima Electronics are:



This space for Architect/Engineer Approval

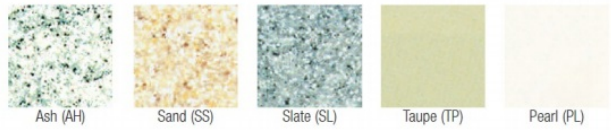
► OPERATION

As the user's hands enter the beam's effective range, the beam is reflected back into the sensor receiver and activates the solenoid valve allowing water to flow from the spout. Water will flow until user's hands are removed or until the time out limit is reached.

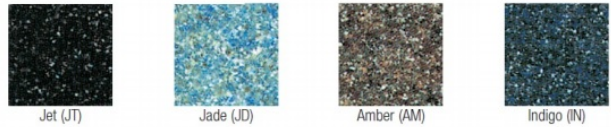


► SLOANSTONE™ 4000 Series Colors

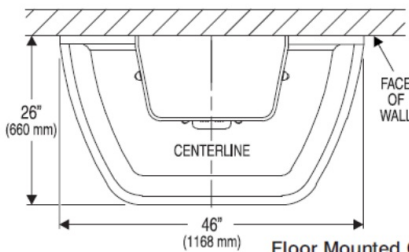
Standard Colors



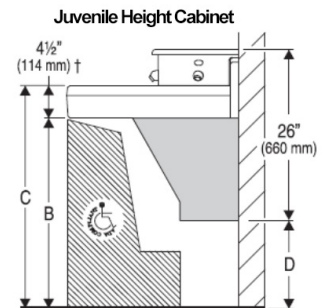
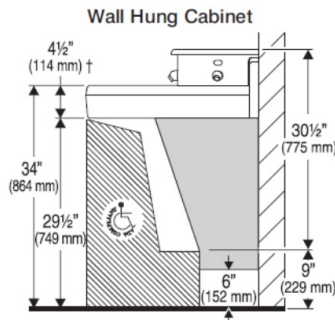
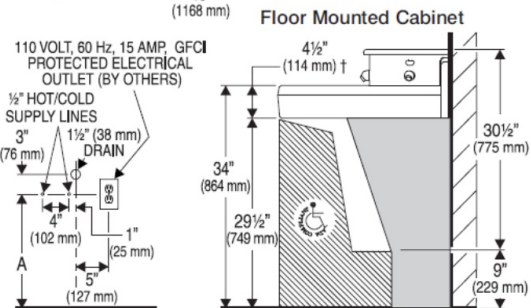
Special Colors



► ROUGH-IN



NOTE: When both a Rim Height of less than 34" (864 mm) and ADA Compliancy is required, the Low Profile Cabinet must be selected.



† For Texas orders, sink aprons are modified to a height of 4" (102 mm) to meet T.A.S. requirements.

Consult local electrical codes for the mounting location of the 110/24 VAC Class 2 transformer.

For additional technical information, contact the Sloan Installation Engineering Department at 1-888-SLOAN-14 (1-888-756-2614) or techsupport@sloanvalve.com

VARIABLE MOUNTING HEIGHT CHART				
DIMENSION DESCRIPTION	T.A.S. AGES 4-10	T.A.S. AGES 11-15	A.D.A. STANDARD	
A ROUGH-IN	16 1/2" (419 mm)	18 1/2" (470 mm)	20 1/2" (521 mm)	
B KNEE CLEARANCE	26" (660 mm)	28" (711 mm)	29 1/2" (749 mm)	
C RIM HEIGHT	30" (762 mm)	32" (813 mm)	34" (864 mm)	
D TOE CLEARANCE	11" (279 mm)	13" (330 mm)	13 1/2" (343 mm)	

► Code Number

16012607