

SPECIFICATIONS (FS-DUO)

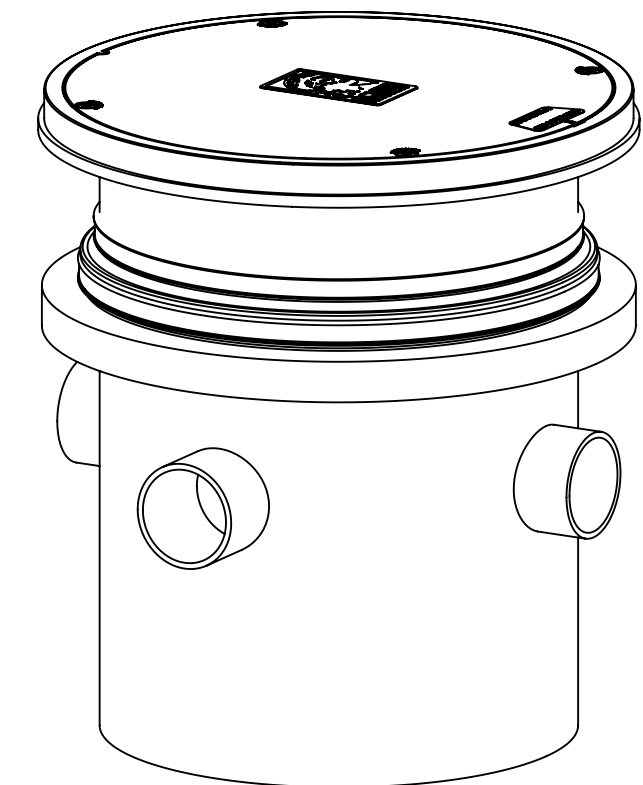
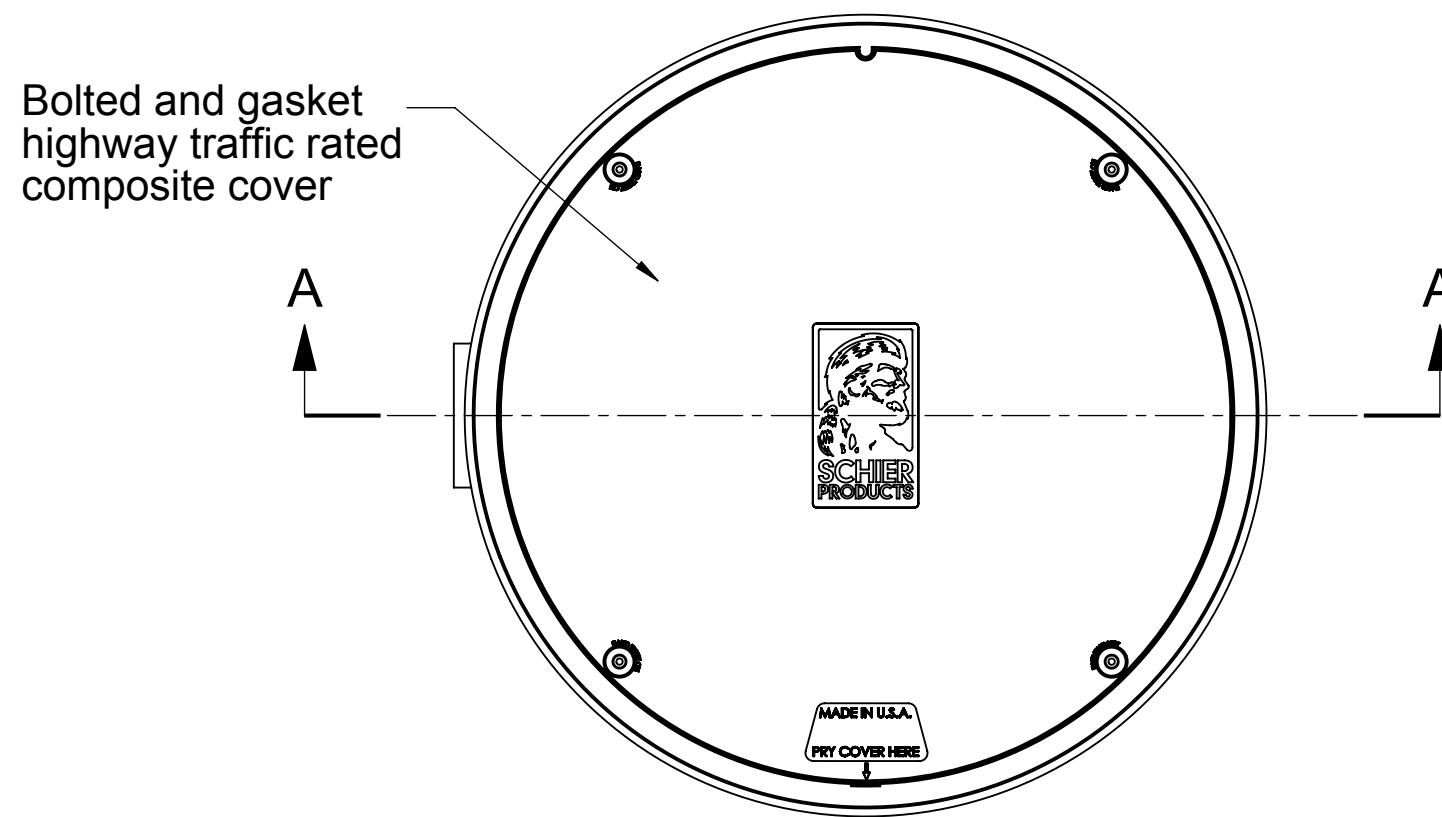
1. High density polyethylene construction.
2. Unit supplied with built-in adapter for up to 2-1/2" of adjustability. Additional riser(s) are also available for deeper burial depth.
3. Weight = 55 pounds
4. Highway traffic rated composite cover.
5. 4" standard plain end pipe connections.
6. Maximum operating temperature 190° F.

ENGINEER'S SPECIFICATION GUIDE

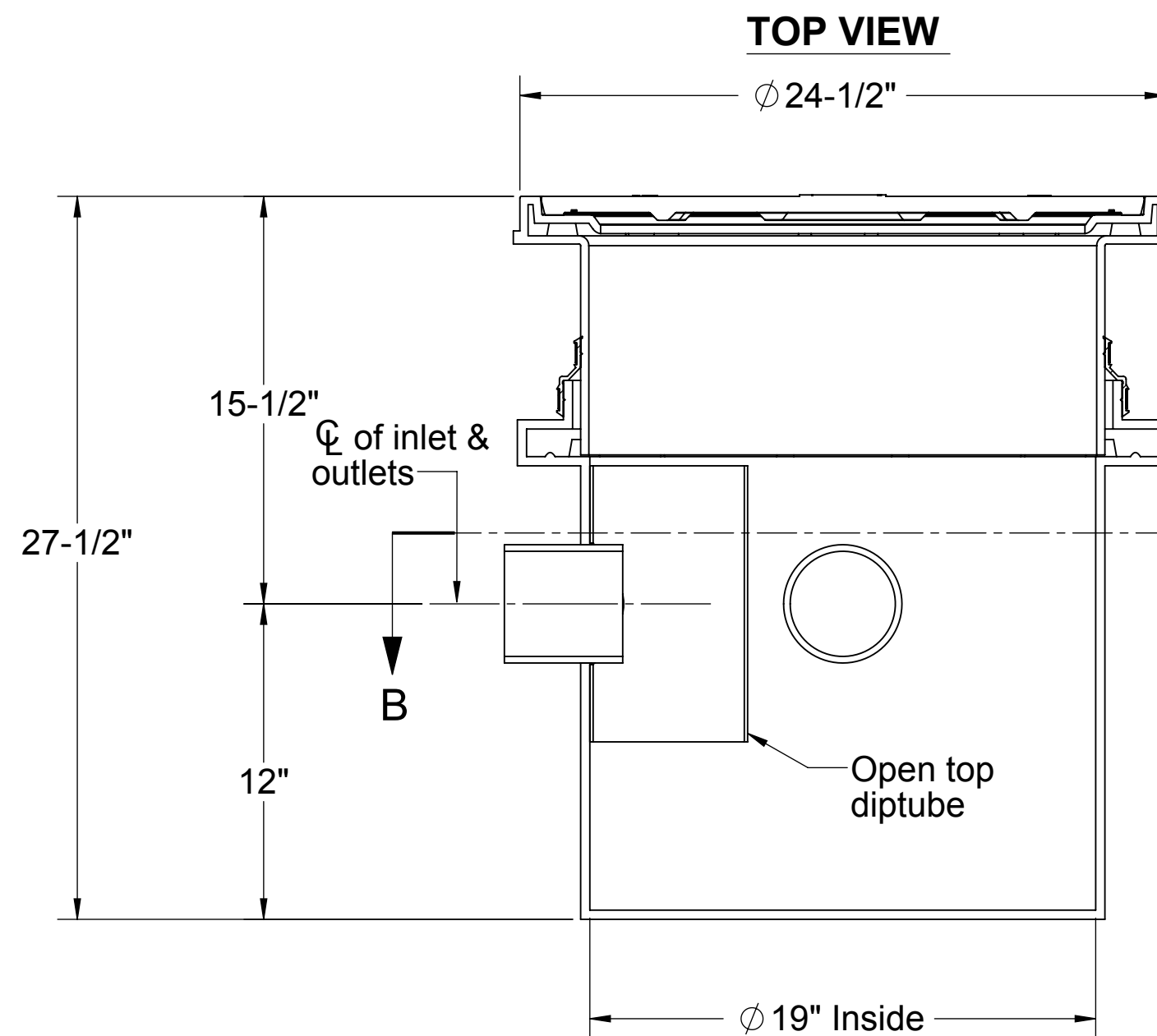
Flow Splitter™ flow distributor model FS-DUO shall be manufactured by Schier Products, Edwardsville, KS. Port shall be lifetime guaranteed and Made in USA of seamless, rotationally molded High Density Polyethylene with sealed top access port and highway rated composite cover and TeleGlide™ field adjustable riser as required when buried.

OPTIONS:

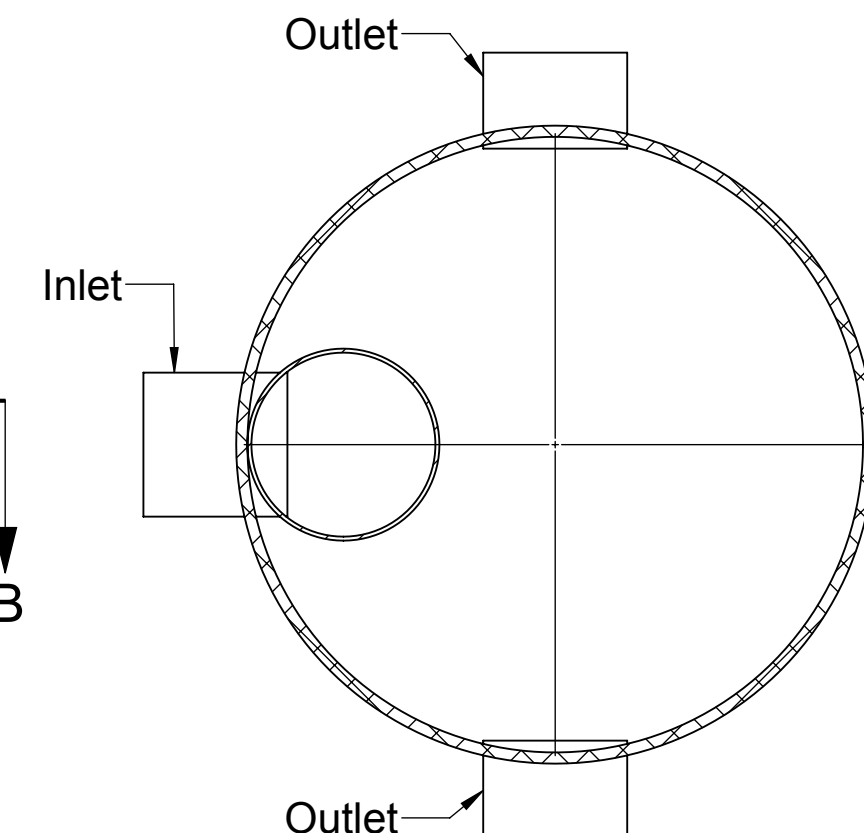
- Teleglide field adjustable risers for extending covers to grade
- Clamping collar kit
- Highway rated pickable cover
- 6" plain end inlet and outlets



ISOMETRIC VIEW



SECTION A-A



SECTION B-B

MODEL NUMBER:FS-DUO PART NUMBER: 8070-001-XX

DESCRIPTION:

**FLOW SPLITTER POLYETHYLENE
WASTE WATER FLOW DISTRIBUTOR**

DWG BY: N.EBERT DATE:12/18/2013 REV: 1 ECO: 1035

SPECIFICATION SHEET

Schier Products
9500 Woodend Road
Edwardsville, KS 66111
Tel: 800-827-7119
Fax: 800-827-9664
www.schierproducts.com

Made in the U.S.A



PROPRIETARY AND CONFIDENTIAL

THE INFORMATION CONTAINED IN THIS DRAWING IS THE SOLE PROPERTY OF SCHIER PRODUCTS. ANY REPRODUCTION IN PART OR AS A WHOLE WITHOUT THE WRITTEN PERMISSION OF SCHIER PRODUCTS IS PROHIBITED.