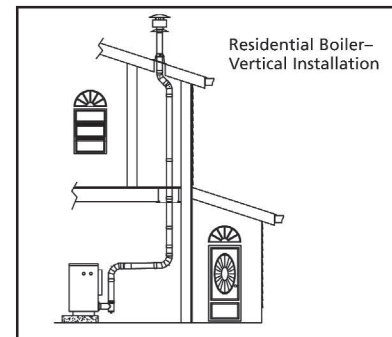
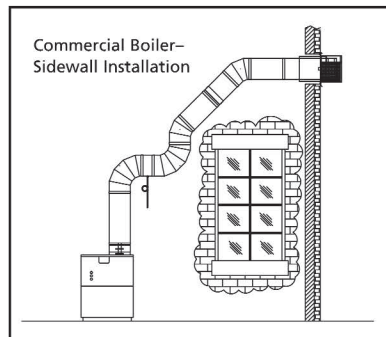


Improving on the Leader

OEM's have specified Saf-T Vent for more than 15 years. Saf-T Vent was the first Venting System using AL 29-4C® superferritic stainless steel to Test and List to UL1738, ULC S636 (Special Gas Vent Systems). The combination of high quality products and our engineering support ensures your installation has high-performance quality from appliance adapter to termination.



Saf-T Vent EZ Seal

Residential/Commercial

Technical Specifications:

- All components AL-29-4C®.
- Built-in seal adhered in female end of the vent.
- Patented Ring-and-Tab™ secure-fit connections.

Uses:

- Special gas vent (horizontal and vertical) for mid- and high-efficiency residential gas furnaces, water heaters and boilers.
- ANSI Category I, II, III, or IV appliances.

- Negative and positive pressure vent systems.
- Condensing, near-condensing, and non-condensing vent systems.

Diameters:

Residential/Light Commercial: 3", 4", 5".
Commercial/Industrial: 6" through 16"
(For larger diameters use Saf-T Vent GC or Saf-T Vent CI Plus).

Fuels:

- Natural Gas
- Propane

Pressure:

Range from -2" wc up to +8" wc.

Temperature:

Listed for all appliances with flue gas temperatures up to 480°F.

UL/cUL Listed:

Tested and Listed to UL 1738 (Special Gas Vent) and ULC-S636 in Canada (Type BH Gas Vent)

Installation Requirements:

Follow installation and maintenance guide.

To view Clearance to Combustible specifications, please visit www.selkirkcorp.com.



- Easy to install, because the seal's built right in.
- Engineered for fast, secure installation.
- Reliable performance.
- Manufactured using AL29-4C Stainless Steel.

The **best** special gas vent system is also the **easiest** to install.

SELKIRK®

Selkirk Corporation
1301 W. Pres. George Bush Highway
Richardson, TX 75080-1139
Toll Free: 1.800.992.VENT (8368)

SELKIRK®

www.selkirkcorp.com

Selkirk Canada Corporation
P.O. Box 526, Depot 1
Hamilton, ON L8L 7X6
Toll Free: 1.888.SELKIRK (735.5475)

Saf-T Vent EZ Seal

Saf-T Vent EZ Seal Applications

Saf-T Vent EZ Seal is a UL/cUL Tested and Listed single-wall special gas vent system for residential and light commercial mid- and high-efficiency appliances. This system is specially suited to:

- ANSI Category I, II, III, or IV appliances.
- Negative and positive pressure vent systems.
- Condensing, near-condensing, and non-condensing vent systems.

Listed for all gas appliances with flue gas temperatures up to 480° F.

Manufactured entirely of superferritic alloys.



- 1** Ring
Slide ring over tabs
- 2** Tab
Bend tabs
- 3** Get a perfect
connection

No RTV

An integral silicone seal means EZ Seal won't seat incorrectly and won't leak flue gas or condensate—no problems, no callbacks. No RTV also means no curing time, so the appliance can be started as soon as installation is complete. The combination of no tools and no RTV makes EZ Seal the easiest to install.

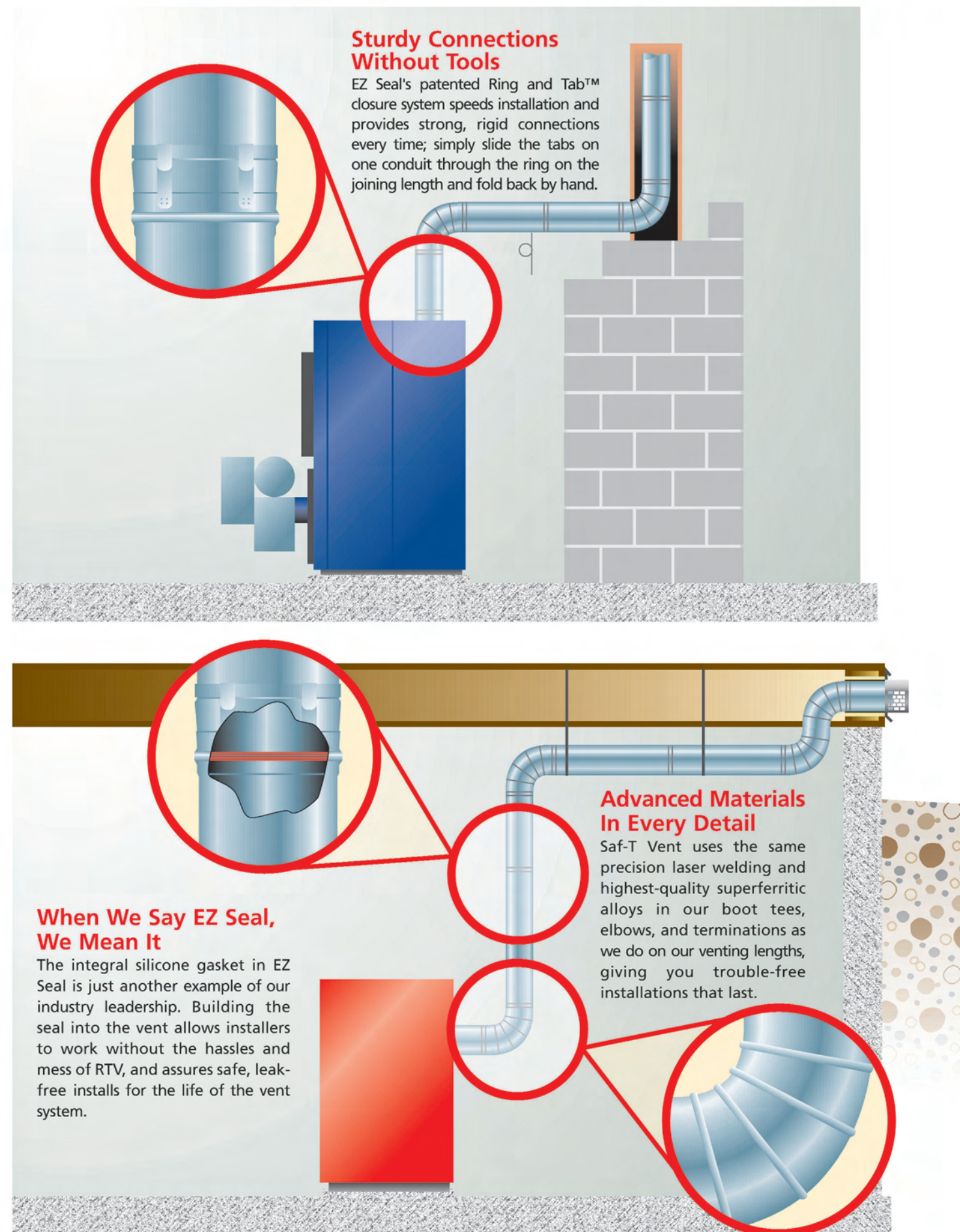
Ring and Tab™ Closure System

With an integral silicone seal and the patented Ring and Tab™ closure system, Saf-T Vent EZ Seal installs fast. Adjustable lengths mean you don't have to bother with tools to cut the vent on site; no cutting ensures vent integrity as well as saving time. You can install the best high efficiency venting with just your hands. Do not use screws.

Advanced Materials For High Efficiency

Saf-T Vent EZ Seal is manufactured entirely of AL 29-4C® superferritic stainless steel. Laser butt seam welds and advanced resistance-welded fittings leave walls smooth inside to minimize collection of combustion by-products. A wide variety of parts, including OEM-approved starter adapters, makes standard and non-standard installations simple to complete. EZ Flow elbows reduce pressure drop to exceed manufacturers' requirements, permitting longer vent runs.

EZ Seal at work



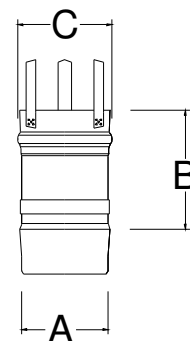
Saf-T Vent® EZ Seal

SINGLE WALL AL 29-4C® SPECIAL GAS VENT

Straight Lengths:

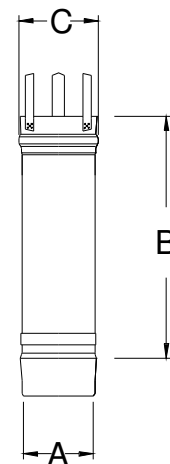
6" Length — Install vent with a continuous pitch of 1/4" per foot, sloping upward toward the termination, draining back toward the appliance or inline drain. It is important to provide adequate support to a Saf-T Vent EZ Seal system. Support horizontal portions of the vent system at 6-foot intervals. Vertical sections should be supported at least every 30-feet and after every offset or transition.

Part Number	DIM - A Nominal Diameter	DIM - B Installed Length	DIM - C Maximum OD
9301	3	4.5	3.4
9401	4	4.5	4.4
9501	5	4.5	5.4
9601	6	4.5	6.4
9701	7	4.5	7.4
9801	8	4.5	8.4
9901	9	4.5	9.4
91001	10	4.5	10.4
91201	12	4.5	12.4
91401	14	4.5	14.4
91601	16	4.5	16.4



12" Length — Install vent with a continuous pitch of 1/4" per foot, sloping upward toward the termination, draining back toward the appliance or inline drain. It is important to provide adequate support to a Saf-T Vent EZ Seal system. Support horizontal portions of the vent system at 6-foot intervals. Vertical sections should be supported at least every 30-feet and after every offset or transition.

Part Number	DIM - A Nominal Diameter	DIM - B Installed Length	DIM - C Maximum OD
9302	3	10.5	3.4
9402	4	10.5	4.4
9502	5	10.5	5.4
9602	6	10.5	6.4
9702	7	10.5	7.4
9802	8	10.5	8.4
9902	9	10.5	9.4
91002	10	10.5	10.4
91202	12	10.5	12.4
91402	14	10.5	14.4
91602	16	10.5	16.4



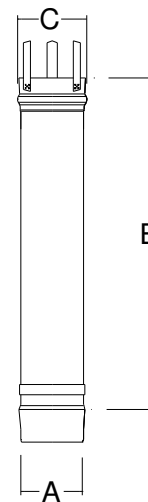
Saf-T Vent® EZ Seal

SINGLE WALL AL 29-4C® SPECIAL GAS VENT

Straight Lengths:

18" Length — Install vent with a continuous pitch of 1/4" per foot, sloping upward toward the termination, draining back toward the appliance or inline drain. It is important to provide adequate support to a Saf-T Vent EZ Seal system. Support horizontal portions of the vent system at 6-foot intervals. Vertical sections should be supported at least every 30-feet and after every offset or transition.

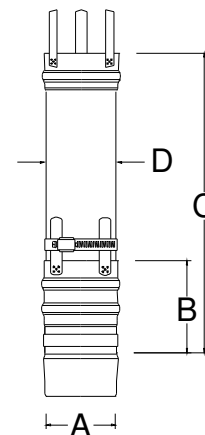
Part Number	DIM - A Nominal Diameter	DIM - B Installed Length	DIM - C Maximum OD
9304	3	16.5	3.4
9404	4	16.5	4.4
9504	5	16.5	5.4
9604	6	16.5	6.4
9704	7	16.5	7.4
9804	8	16.5	8.4
9904	9	16.5	9.4
91004	10	16.5	10.4
91204	12	16.5	12.4
91404	14	16.5	14.4
91604	16	16.5	16.4



Adjustable Length

Use to accommodate distances not possible with the standard Saf-T Vent EZ Seal lengths. The slip connector serves as an adjustable section and eliminates the need to cut parts to length. The Slip Connector can have an installed length from 6 to 19 inches. It works best in conjunction with another straight length of Saf-T Vent EZ Seal. When used with an elbow or a tee, do not insert the Slip Connector so far that air flow within the vent becomes obstructed. When planning a venting system, include one slip connector for every change of direction and for any spans between two fixed points. Each slip connector comes with three components, a slip section, a male connector and a stainless steel hose clamp.

Part Number	DIM - A Nominal Diameter	DIM - B Minimum Installed Length	DIM - C Maximum Installed Length	DIM - D Slip Diameter
9324	3.1	6	19	3.00
9424	4	6	19	3.90
9524	5	6	19	4.90
9624	6	6	19	5.87
9724	7	6	19	6.85
9824	8	6	19	7.89
9924	9	6	19	8.86
91024	10	6	19	9.86
91224	12	6	19	11.86
91424	14	6	19	13.87
91624	16	6	19	15.86



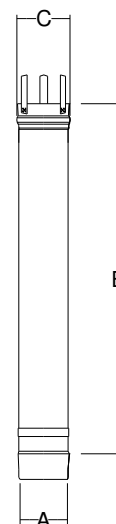
Saf-T Vent® EZ Seal

SINGLE WALL AL 29-4C® SPECIAL GAS VENT

Straight Lengths:

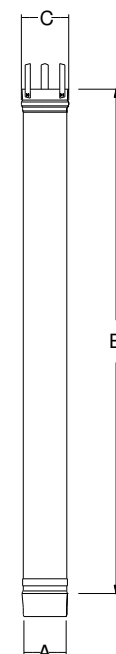
2 Ft. Length — Install vent with a continuous pitch of 1/4" per foot, sloping upward toward the termination, draining back toward the appliance or inline drain. It is important to provide adequate support to a Saf-T Vent EZ Seal system. Support horizontal portions of the vent system at 6-foot intervals. Vertical sections should be supported at least every 30-feet and after every offset or transition.

Part Number	DIM - A Nominal Diameter	DIM - B Installed Length	DIM - C Maximum OD
9305	3	22.5	3.4
9405	4	22.5	4.4
9505	5	22.5	5.4
9605	6	22.5	6.4
9705	7	22.5	7.4
9805	8	22.5	8.4
9905	9	22.5	9.4
91005	10	22.5	10.4
91205	12	22.5	12.4
91405	14	22.5	14.4
91605	16	22.5	16.4



3 Ft. Length — Install vent with a continuous pitch of 1/4" per foot, sloping upward toward the termination, draining back toward the appliance or inline drain. It is important to provide adequate support to a Saf-T Vent EZ Seal system. Support horizontal portions of the vent system at 6-foot intervals. Vertical sections should be supported at least every 30-feet and after every offset or transition.

Part Number	DIM - A Nominal Diameter	DIM - B Installed Length	DIM - C Maximum OD
9307	3	34.5	3.4
9407	4	34.5	4.4
9507	5	34.5	5.4
9607	6	34.5	6.4
9707	7	34.5	7.4
9807	8	34.5	8.4
9907	9	34.5	9.4
91007	10	34.5	10.4
91207	12	34.5	12.4
91407	14	34.5	14.4
91607	16	34.5	16.4



Saf-T Vent® EZ Seal

SINGLE WALL AL 29-4C® SPECIAL GAS VENT

Straight Lengths:

4 Ft. Length — Install vent with a continuous pitch of 1/4" per foot, sloping upward toward the termination, draining back toward the appliance or inline drain. It is important to provide adequate support to a Saf-T Vent EZ Seal system. Support horizontal portions of the vent system at 6-foot intervals. Vertical sections should be supported at least every 30-feet and after every offset or transition.

Part Number	DIM - A Nominal Diameter	DIM - B Installed Length	DIM - C Maximum OD
9308	3	46	3.4
9408	4	46	4.4
9508	5	46.5	5.4
9608	6	46.5	6.4
9708	7	46.5	7.4
9808	8	46.5	8.4
9908	9	46.5	9.4
91008	10	46.5	10.4
91208	12	46	12.4
91408	14	46	14.4
91608	16	46	16.4

5 Ft. Length — Install vent with a continuous pitch of 1/4" per foot, sloping upward toward the termination, draining back toward the appliance or inline drain. It is important to provide adequate support to a Saf-T Vent EZ Seal system. Support horizontal portions of the vent system at 6-foot intervals. Vertical sections should be supported at least every 30-feet and after every offset or transition.

Part Number	DIM - A Nominal Diameter	DIM - B Installed Length	DIM - C Maximum OD
9360	3	59.5	3.4
9460	4	59.5	4.4



Saf-T Vent® EZ Seal

SINGLE WALL AL 29-4C® SPECIAL GAS VENT

Silicone Lubricant:

Use as a recommended aid, sold separately, when assembling Saf-T Vent CI Plus double wall, Saf-T Vent EZ Seal single wall and Saf-T Vent SC sealed combustion joints which have the silicone gasket/seal installed in the female end. Apply a very thin film of silicone compound lubricant directly to gasket on inside of female end, both edges of gasket. Heatfab part number 7001SIL-5, for a 5 oz. tube of gasket lube.

Approx Number of Joints for Lube	
Inner Vent Diameter, Inches	5 oz Tube
3"	50
4"	50
5"	40
6"	38
7"	36
8"	28
9"	26
10"	20
12"	18
14"	14
16"	12

© Copyright 2013 Selkirk Corp.
Heatfab Saf-T Vent are registered trademarks of Selkirk Corp.
AL 29-4C is a registered trademark of ATI Properties, Inc.
UL and the UL Mark are registered trademarks of
Underwriters Laboratories, Inc.

Pub # 11714 8/8/13
