

LEGACY SERIES
SHOWER STALL

Oasis



60-INCH MODEL

SH-6034

Rough-In Dimensions

60" wide x 35-1/4" deep x 75-5/8" high (w/ 4-inch dam)

Finished Dimensions

60" wide x 34" deep x 74-3/8" high (w/ 4-inch dam)

Unit Features



- One - Piece Fiberglass Composite Construction
- Sanitary Grade Polyester Gelcoat Surface
- 3-3/8" Dia. Center Drain (see reverse side for location)
- Elevated Back Wall Shelves
- Flat Wall Design To Accommodate Grab Bar & Seat Applications
- Low Profile Dam (standard)
- Textured Floor Pattern
- Balsa Wood Core Floor Structure

Special Notes

- Optional ABF Model (provides 3 Inches of drain clearance)
- Factory Applied Reinforcement Packages Available
- Factory Applied Bar Only and Bar & Seat Packages Available

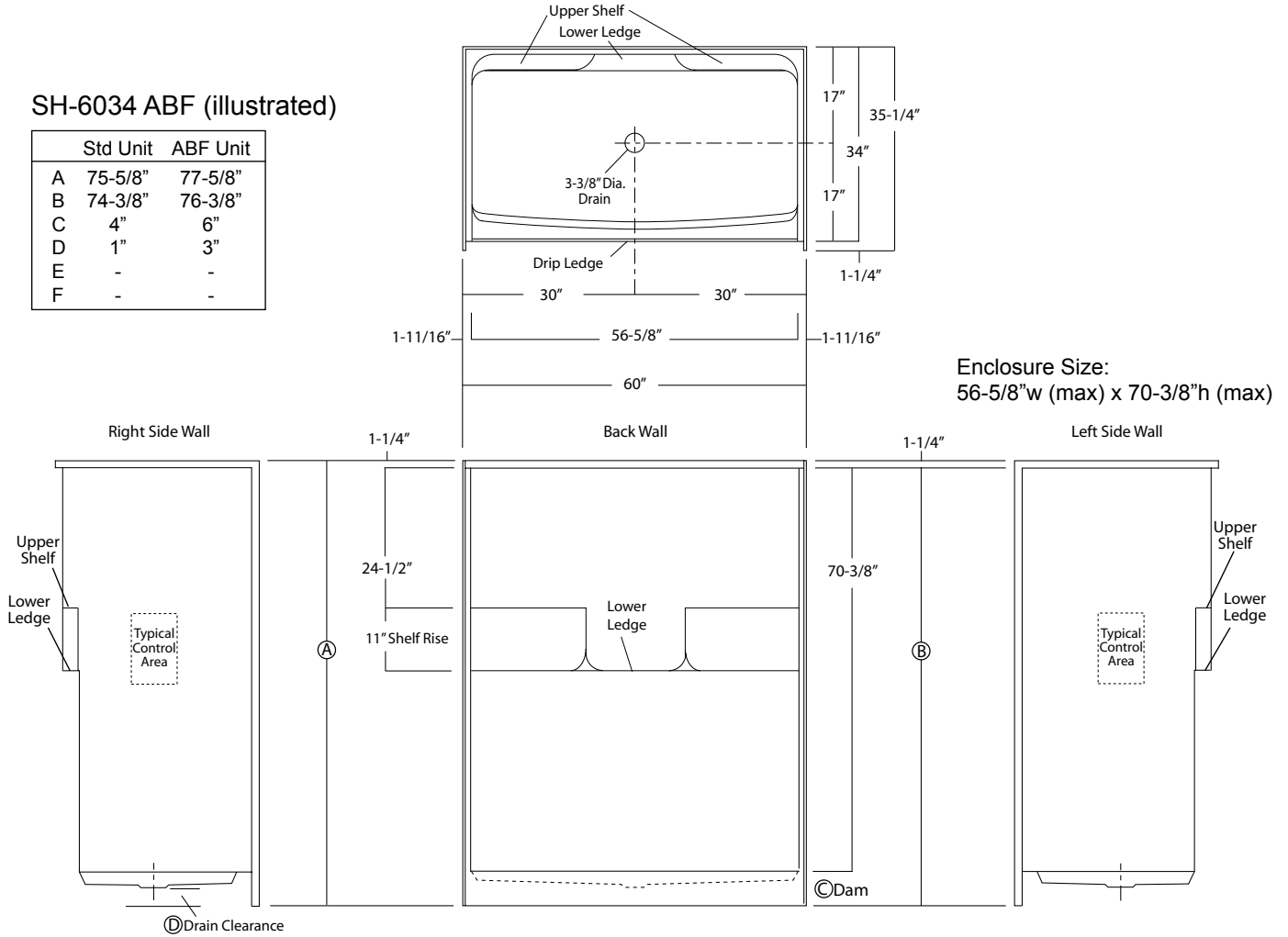
Order No.: SH-6034 (4" dam)

SH-6034 ABF (6" dam)

60" x 34", one-piece gelcoated fiberglass shower stall with a 4" low profile dam (1" drain clearance), dual upper shelves and lower accessory ledge, wall surround, and center drain.

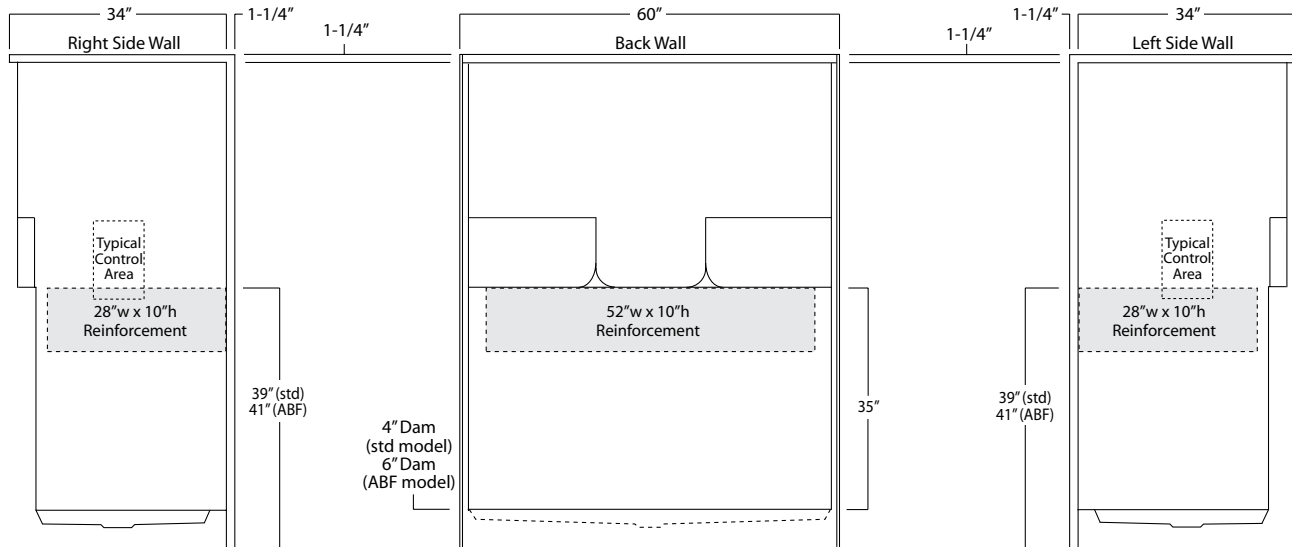
SH-6034 ABF (illustrated)

| | Std Unit | ABF Unit |
|---|----------|----------|
| A | 75-5/8" | 77-5/8" |
| B | 74-3/8" | 76-3/8" |
| C | 4" | 6" |
| D | 1" | 3" |
| E | - | - |
| F | - | - |



Package Order No.: FH (Fair Housing wall reinforcement)

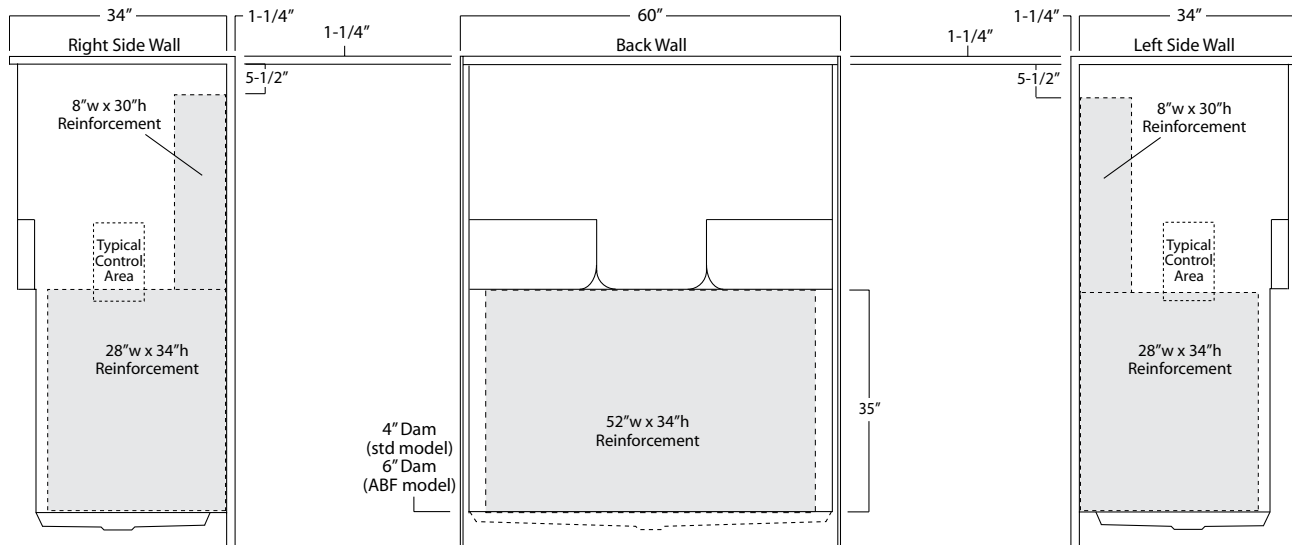
Package Includes: Factory applied, HUD-FHA compliant (Fair Housing), structurally reinforced wall areas (as shown) for the independent field application of bars.



Package Order No.: 3SM (3-side, mid-level wall reinforcement)

Package Includes: Factory applied, 3-side, mid-level, structurally reinforced wall areas (as shown), exceeding 'Fair Housing' (HUD/FHA) requirements.

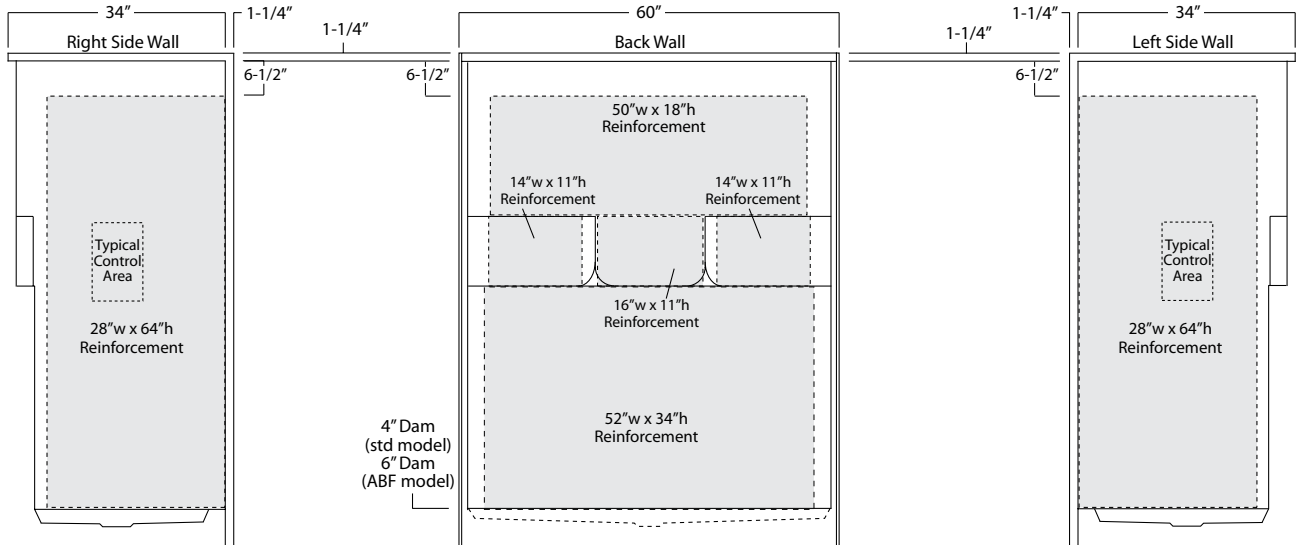
NOTE: Factory installed component packages available with listed reinforcement.



Package Order No.: 3SF (3-side, full-wall reinforcement)

Package Includes: Factory applied, 3-side, full-wrap, structurally reinforced wall areas (as shown), exceeding 'Fair Housing' (HUD/FHA) requirements, for the independent field application of bars.

NOTE: Factory installed component packages available with listed reinforcement.



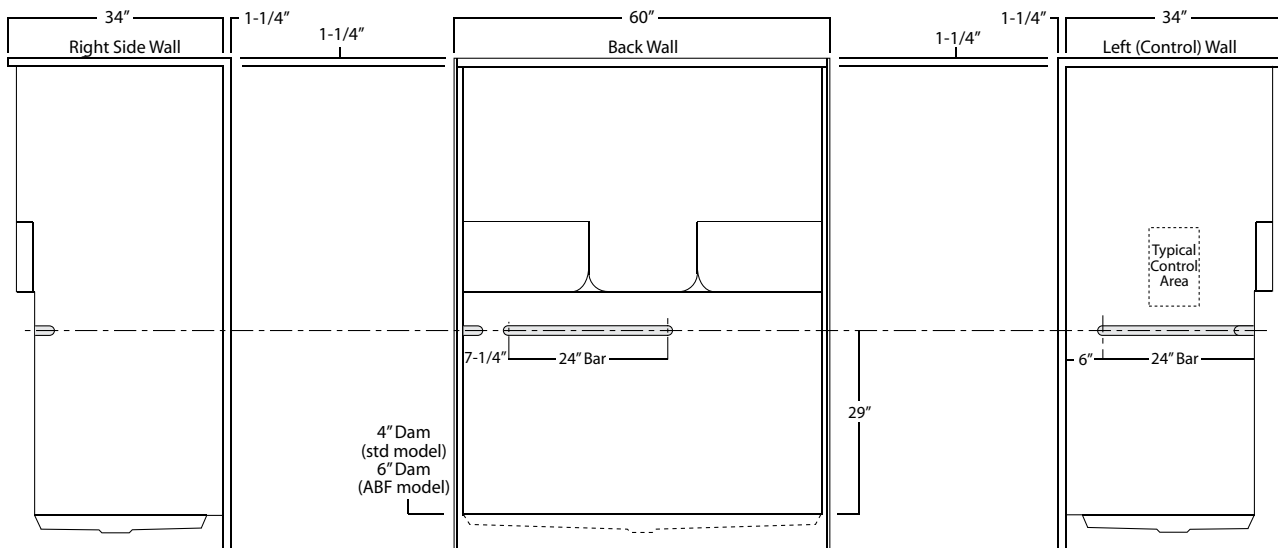
Package Order No.: BP1-60 (R or L) (2-bar only package)

Upgrade Package No.: BP1-60 (R or L) WHT (1-1/4" dia., white powder coat, 2-bar only package)

Package Includes: Factory installed, 1-1/2" dia. stainless steel, 2-bar package with basic reinforcement for components (as shown).

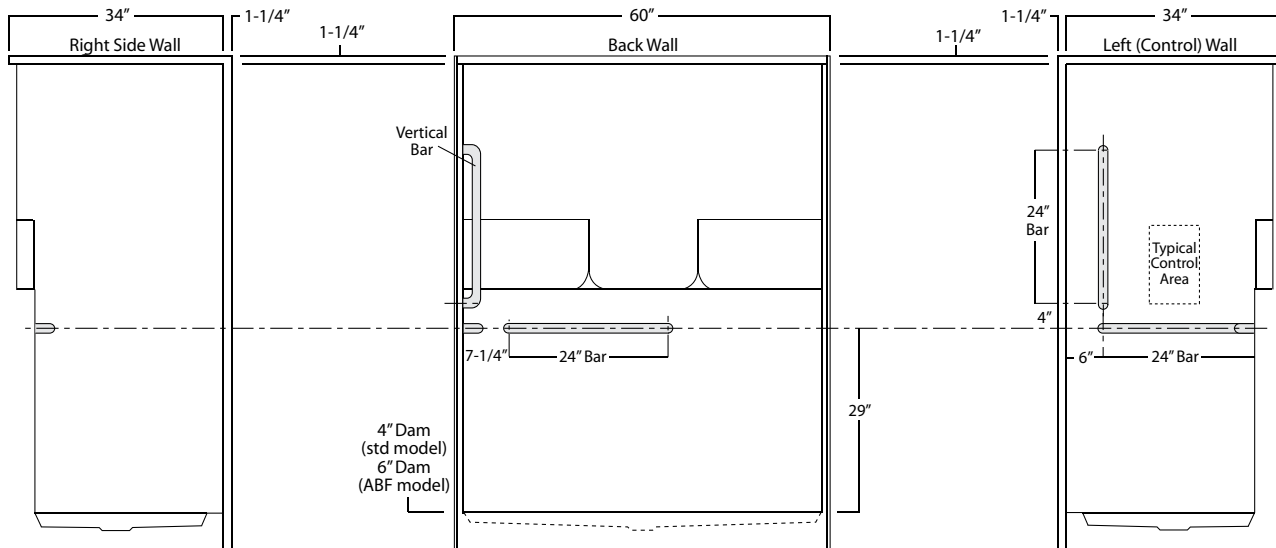
NOTE: Positioning of factory installed components allow for the installation of a shower enclosure.

NOTE: "R or L" designates RH or LH control wall (BP1-60 L illustrated).



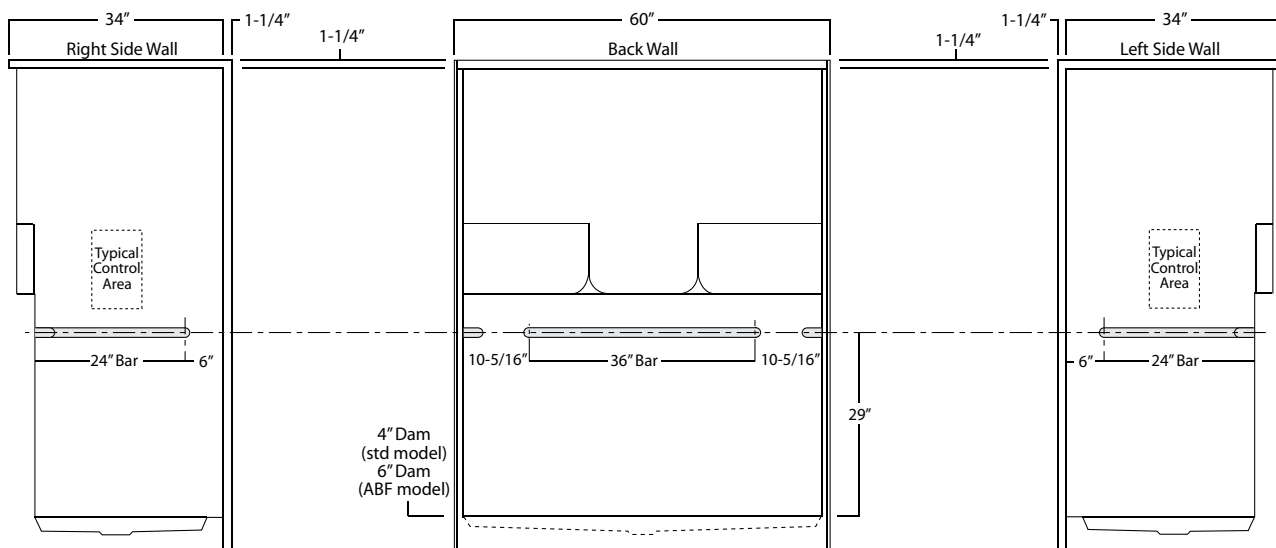
Package Order No.: BP2-60 (R or L) (3-bar only package)
Upgrade Package No.: BP2-60 (R or L) WHT (1-1/4" dia., white powder coat, 3-bar only package)

Package Includes: Factory installed, 1-1/2" dia. stainless steel, 3-bar package with basic reinforcement for components (as shown).
 NOTE: Positioning of factory installed components allow for the installation of a shower enclosure.
 NOTE: "R or L" designates RH or LH control wall.



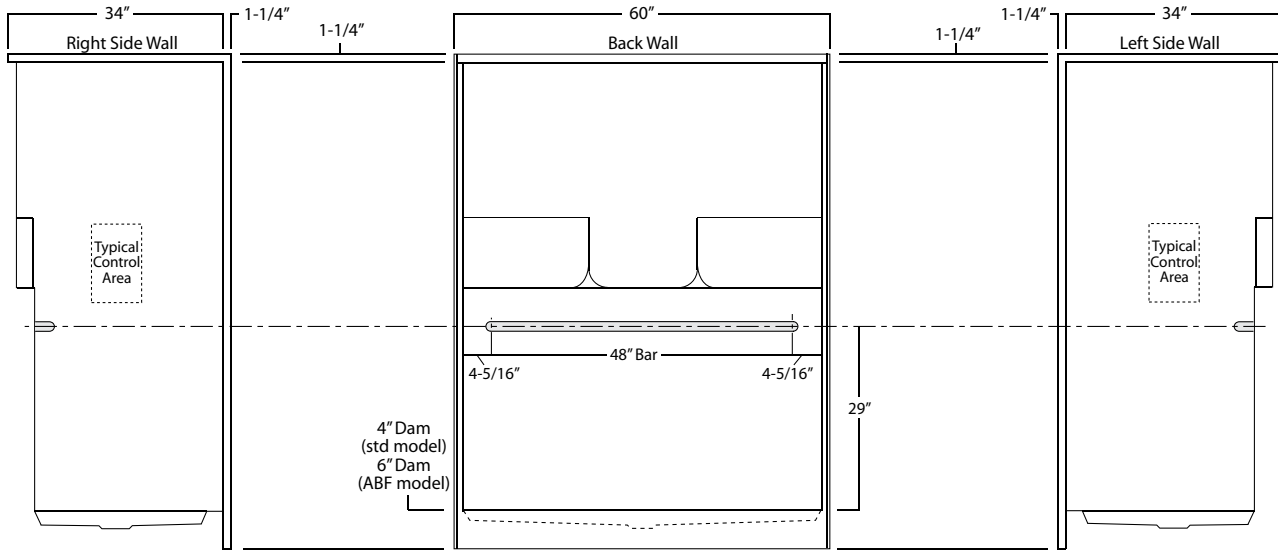
Package Order No.: BP3-60 (3-bar only package)
Upgrade Package No.: BP3-60 WHT (1-1/4" dia., white powder coat, 3-bar only package)

Package Includes: Factory installed, 1-1/2" dia. stainless steel, 3-bar package with basic reinforcement for components (as shown).
 NOTE: Positioning of factory installed components allow for the installation of a shower enclosure.



Package Order No.: **BP5-60 (single-bar only package)**
 Upgrade Package No.: **BP5-60 WHT (1-1/4" dia., white powder coat, single-bar only package)**

Package Includes: Factory installed, 1-1/2" dia. stainless steel, single, back wall bar package (as shown).

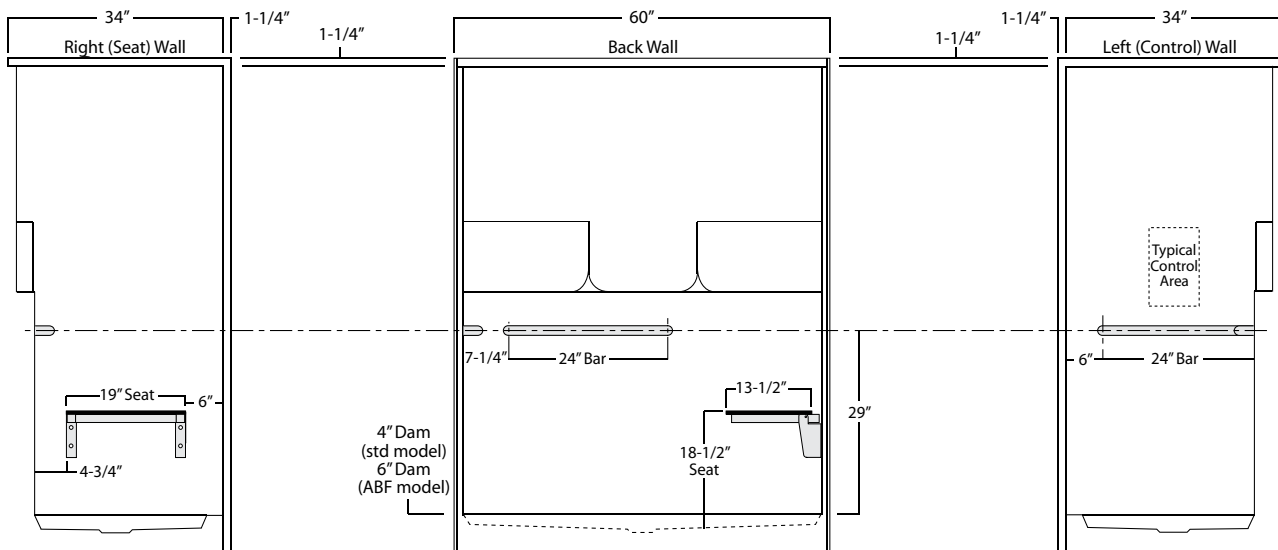


Package Order No.: **TL-(RS or LS) (2-bar & folding seat package)**
 Upgrade Package No.: **TL-(RS or LS) WHT (1-1/4" dia., white powder coat, 2-bar & folding seat package)**

Package Includes: Factory installed, 1-1/2" dia. stainless steel, 2-bar and folding seat package with basic reinforcement for components (as shown).

NOTE: Positioning of factory installed components allow for the installation of a shower enclosure.

NOTE: "RS or LS" designates seat wall.



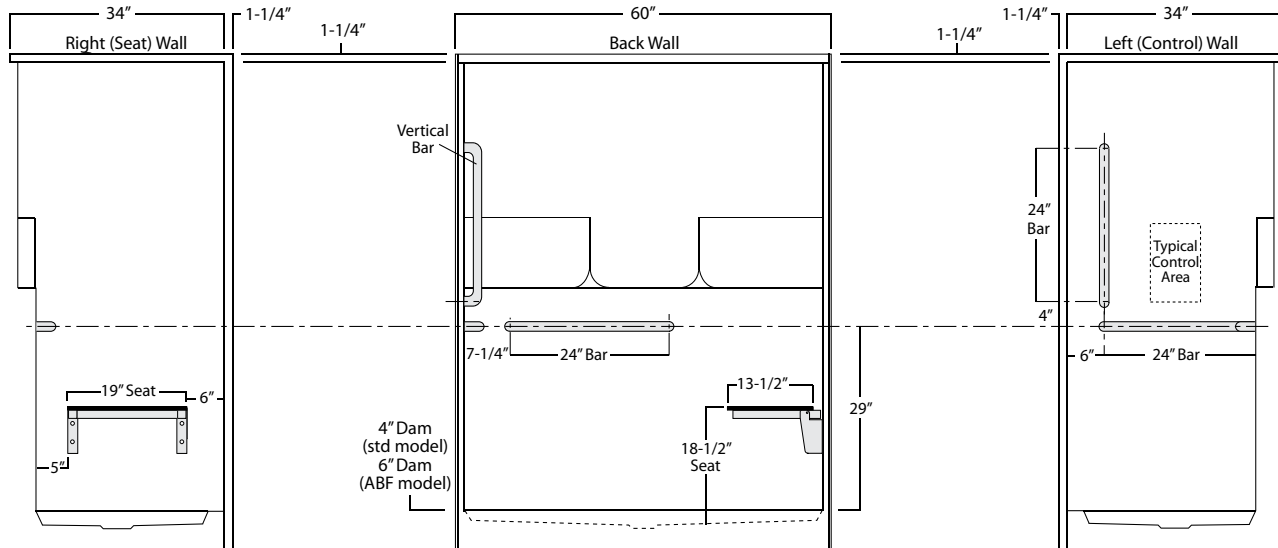
Package Order No.: TLV-(RS or LS) (3-bar & folding seat package)

Upgrade Package No.: TLV-(RS or LS) WHT (1-1/4" dia., white powder coat, 3-bar & folding seat package)

Package Includes: Factory installed, 1-1/2" dia. stainless steel, 3-bar and folding seat package with basic reinforcement for components (as shown).

NOTE: Positioning of factory installed components allow for the installation of a shower enclosure.

NOTE: "RS or LS" designates seat wall.



Photographic images may include optional components and appear different than actual product.
 Dimensions shown are maximum. Due to the nature of the materials involved, actual unit dimensions can vary (tolerances: +/-1/8 inch)
 Oasis reserves the right to modify or discontinue product and/or associated equipment without prior written or verbal notification or obligation.