

Oasis 3-Piece, 48-inch Shower Compartment With ActivLife 2-Bar (2-horizontal) Package

48-inch / Private Access / Bars Only



Specification – Oasis 3-piece FRP gelcoat shower compartment SH3P-4832, offered in a standard 4-inch or 6-inch (ABF) dam configuration. ActivLife package includes a horizontal bar across the back wall and across the control wall.

Standards Certification:

The shower compartment listed is manufactured in compliance with ANSI Z124 Standards, and certified through an ongoing, independent quality assurance and testing program.

The factory-applied grab bar package is certified through an independent review program.



SH3P-4832 / BP1-L
(2-bar package)
Model & Package Illustrated

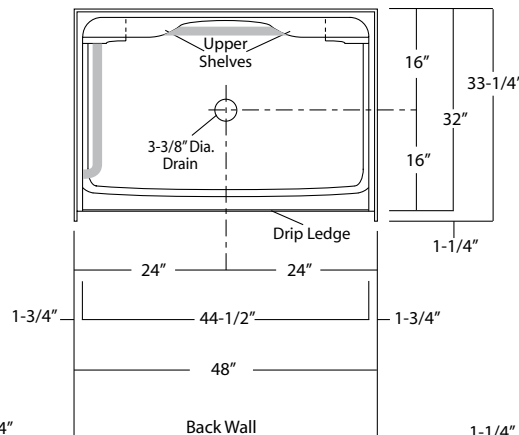
NOTE: Positioning of factory attached grab bars allow for installation of a shower enclosure.



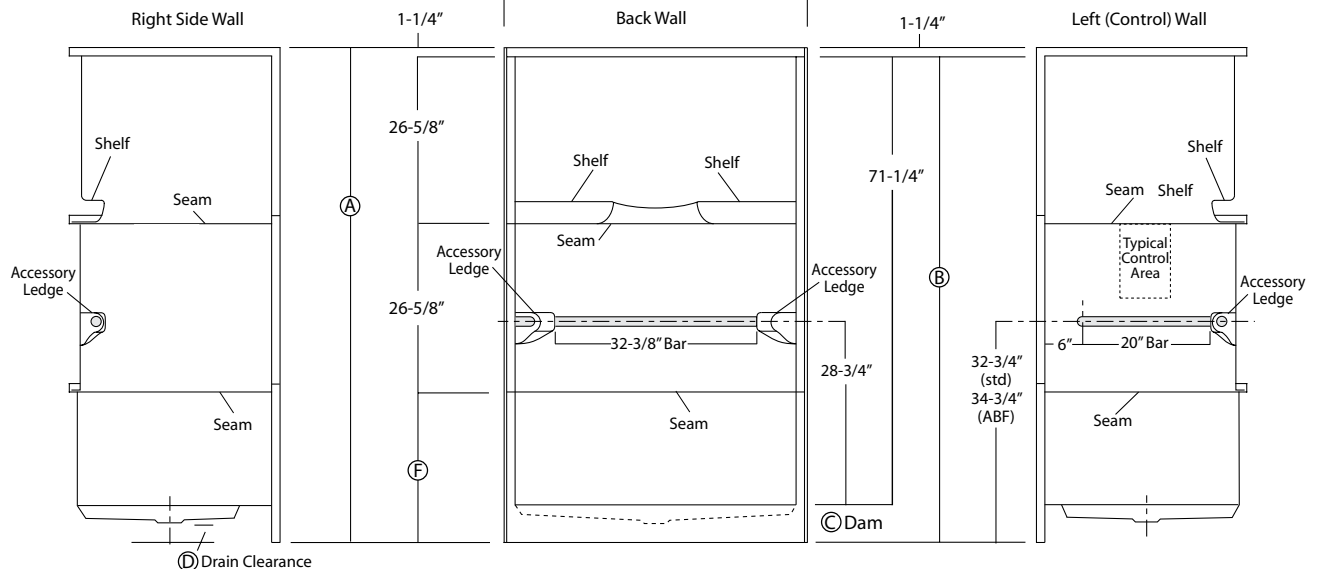
Home Innovation
LAB CERTIFIED™



	Std Unit	ABF Unit
A	76-1/2"	78-1/2"
B	75-1/4"	77-1/4"
C	4"	6"
D	1"	3"
E	-	-
F	22"	24"



Enclosure Size:
44-1/2" w (max) x 71-1/4" h (max)



Dimensions shown are maximum. Due to the nature of the materials involved, actual unit dimensions can vary (tolerances: +0 / -3/8 inch). Oasis reserves the right to modify or discontinue product and/or associated equipment without prior written or verbal notification or obligation.

Model ID	Package Code	Description (define configuration referencing control side)
----------	--------------	---

SH3P-4832 (Std or ABF)	/ BP1-R (right wall)	48" x 32", 3-piece, center drain shower with 4" (std) or 6" (ABF) dam, and ActivLife 1.50" dia. stainless steel 2-bar package (single horizontal back wall bar, single horizontal bar on control wall).
SH3P-4832 (Std or ABF)	/ BP1-L (left wall)	

Powder Coated Bar Packages (1.25-inch dia.)

SH3P-4832 (Std or ABF)	/ BP1-R WHT (right wall)	48" x 32", 3-piece, center drain shower with 4" (std) or 6" (ABF) dam, and ActivLife 1.25" dia. white powder coated 2-bar package (single horizontal back wall bar, single horizontal bar on control wall).
SH3P-4832 (Std or ABF)	/ BP1-L WHT (left wall)	
SH3P-4832 (Std or ABF)	/ BP1-R OFW (right wall)	48" x 32", 3-piece, center drain shower with 4" (std) or 6" (ABF) dam, and ActivLife 1.25" dia. off-white powder coated 2-bar package (single horizontal back wall bar, single horizontal bar on control wall).
SH3P-4832 (Std or ABF)	/ BP1-L OFW (left wall)	
SH3P-4832 (Std or ABF)	/ BP1-R SNK (right wall)	48" x 32", 3-piece, center drain shower with 4" (std) or 6" (ABF) dam, and ActivLife 1.25" dia. nickel finish 2-bar package (single horizontal back wall bar, single horizontal bar on control wall).
SH3P-4832 (Std or ABF)	/ BP1-L SNK (left wall)	

Package Notes:

1. Model available without listed package.
2. For 3-bar package, adding a vertical bar on control wall, see ActivLife "BP2" package code.
3. For 3-wall horizontal bar package, see ActivLife "BP3" package code.
4. For single horizontal bar package, see ActivLife "BP5" package code.
5. For REINFORCEMENT ONLY for horizontal bars (HUD/FHA-Fair Housing), see ActivLife "FH" package code.
6. For expanded reinforcement package options, (with or without listed package components), see ActivLife "3SM" and "3SF" package codes.

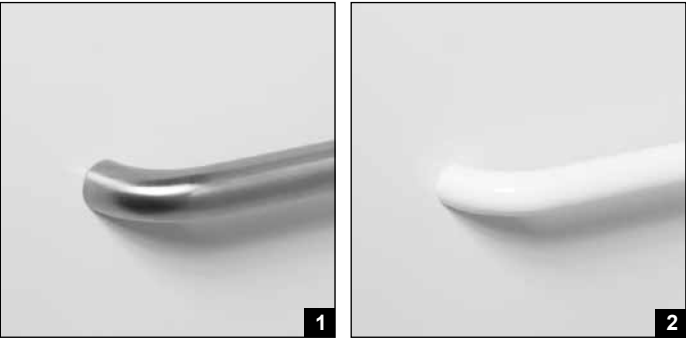
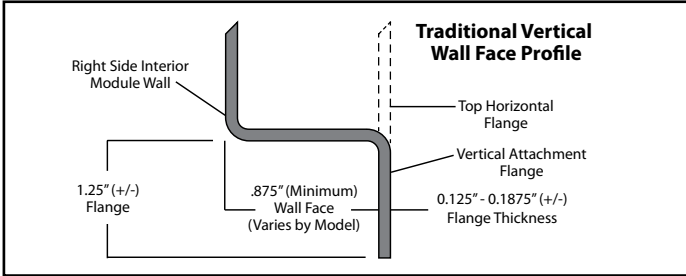


Photo 1: Grab Bars: Factory-installed 1.50-inch diameter, concealed attachment, 18 gauge, #304 brushed stainless steel grab bars. Concealed attachment design provides tamper-resistance and minimizes debris collection areas at contact points, compared to common exposed flange bar designs, without compromising bar attachment integrity. (Reinforced areas include a structural core material encapsulated in FRP composite.)

Photo 2: Grab Bars: Factory-installed 1.25-inch dia. powder coated (in finishes listed above), concealed attachment, 18 gauge, #304 stainless steel grab bars. Concealed attachment design provides tamper-resistance and minimizes debris collection areas at contact points, compared to common exposed flange bar designs, without compromising bar attachment integrity. (Reinforced areas include a structural core material encapsulated in FRP composite.)