

HIGHER
EFFICIENCY!
HIGHER FLOW
RATES!



INTRODUCING
**THE NEXT GENERATION
OF HIGHER PERFORMANCE**

NOVO
WATER CONDITIONING PRODUCTS

NOVO'S HIGH-EFFICIENCY, 485HE CONTROL VALVE

Novo is pleased to announce the launch of its new generation of high-efficiency control valves – the Novo 485HE! The new softener and filter control valves will be featured across the Novo product line replacing the 465 generation control.

Higher efficiency, higher flow rates, modern design, easier electronics and new features designed specifically for today's plumbing professional! The 485HE control valve offers excellent flow rates for a broader range of applications.

Features:

- ✓ Simple, intuitive electronics for easy start-ups
- ✓ Reverse flow (upflow) & downflow regeneration
- ✓ Precision Brining for ultimate salt efficiency
- ✓ Soft water refill
- ✓ Soft water recharge
- ✓ Automatic backwash frequency preset
- ✓ Automatic system refresh
- ✓ Backlit LCD screen with rotating info display
- ✓ Quick connect brine line, drain line, power cord and plumbing fittings
- ✓ One-piece meter with incorporated turbine meter
- ✓ Comes with ¾" straight & 90° elbow NPT connectors
- ✓ 1" straight & 90° elbow NPT connectors are optional
- ✓ Sharkbite connectors also available



Simple User-Friendly Programming

Specifications	
Valve Body Material	Noryl (PPO)
Plumbing Connections (NPT)	3/4" Straight & 90° Elbow Standard (Optional 1" fitting available)
Tank Thread	2-1/2" NPSM
Adjustable Cycles	Yes
Regeneration	Down Flow, Up flow
Meter Accuracy	+/- 2.5%
Distributor Pilot	1.05"
Drain Line	1/2" Quick Connect Elbow
Brine Line	3/8" Quick Connect Elbow
Flow Rates (Valve Only 50 psi inlet)	
Continuous (15 psi drop)	21 GPM
Peak (25 psi drop)	27 GPM
Max. Backwash (25 psi drop)	17 GPM
Cv	5.4
Typical Applications	
Softeners	up to 16" Diameter
Filters	up to 16" Diameter
Electrical	
Input	Input 120V 60Hz - Output 12V 650mA
Output	12V AC 50/60Hz 410mA
Certification	cUL
Operation Ratings	
Max. Working Pressure	20 - 125 psi
Max. Temperature	34F - 110F
Approvals	
NSF	Yes

NOVOSOFT 485HE SUPER-EFFICIENCY WATER SOFTENER



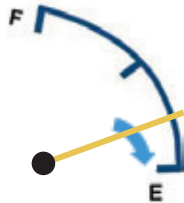
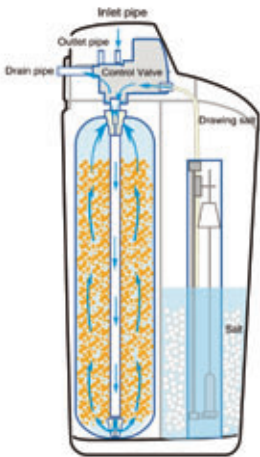
**Up to 68%
lower operating
costs!**

Compact Cabinet Traditional Twin Tank

HIGH PERFORMANCE FEATURES:

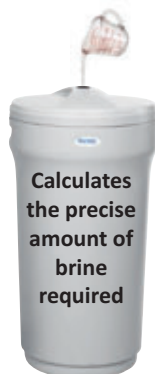
Reverse Flow Regeneration with Precision Brining

Traditional 'downflow' softeners deplete the unused portion of the resin bed with every regeneration. It is like draining the gas tank in your car every time before filling it up!



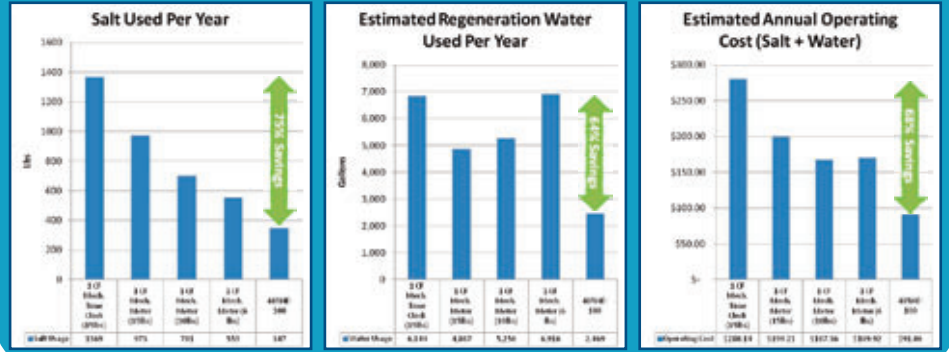
'Reverse Flow Regen' drives the hardness minerals up through the already depleted resin and out to drain - saving both salt and the unused portion of the resin for future use.

Precision Brining saves additional salt by pre-making only 70% of the brine. Just before regeneration, the computer calculates the precise amount of brine top-up needed to regenerate only the depleted resin saving up to 30% more salt!



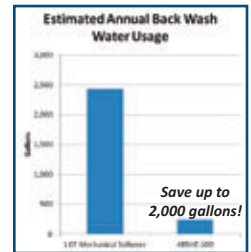
ULTIMATE SALT & WATER SAVINGS!

Use 75% Less Salt & 64% Less Water! It's good for you & good for the environment!



Automatic Backwash Frequency Preset

On clean municipal water supply there is no need to back wash and clean the bed every regeneration. Save up to 2,000 gallons of water a year by skipping up to 10 backwash cycles.



Soft Water Recharge – If total capacity goes below 3%, a short 15 minute 'recharge' will restore additional capacity so the softener can soften until the regular 2:00a.m. regeneration time

Soft Water Brine Tank Refill – Conserve capacity and keep brine tank cleaner by adding only treated soft water to brine tank rather than raw untreated hard water.

Automatic System Refresh – If no water is used for 7 days, the system will perform an automatic refresh preventing bacteria growth.

STANDARD FEATURES:

- ✓ Backlit LCD screen with rotating info display
- ✓ NSF Certified control valve & pressure tank
- ✓ WQA Gold Seal ion exchange resin
- ✓ Condensation tank jacket (twin tank model)
- ✓ Salt grid prevents salt bridging (twin tank)
- ✓ Two-piece cabinet for easy salt tank cleanout
- ✓ Brine safety valve for added protection
- ✓ Uses less than \$2.00 in electricity per year
- ✓ WQA Tested & Certified against CSA B483.1



NovoSoft Softener Specifications

Specifications	485HE-75C	485HE-100C	485HE-75	485HE-100	485HE-150	485HE-200	485HE-300
	15010450	15010451	15010452	15010453	15010454	15010455	15010456
Optional Settings - High Efficiency							
Salt Used - Per Regeneration	2.3 lbs	3.0 lbs	2.3 lbs	3.0 lbs	4.5 lbs	6.0 lbs	9.0 lbs
Water Used - Regeneration	22.7 gal	28.3 gal	22.6 gal	31.6 gal	44.3 gal	60.9 gal	102.2 gal
Hardness Removal - Grains	11,250	15,000	11,250	15,000	22,500	30,000	45,000
Factory Settings - Standard Capacity							
Salt Used - Per Regeneration	4.5 lbs	6.0 lbs	4.5 lbs	6.0 lbs	9.0 lbs	12.0 lbs	18.0 lbs
Water Used - Regeneration	40.5 gal	48.6 gal	34.0 gal	43.4 gal	62.7 gal	87.1 gal	139.2 gal
Hardness Removal - Grains	18,750	25,000	18,750	25,000	37,500	50,000	75,000
Optional - High Capacity							
Salt Used - Per Regeneration	7.5 lbs	10.0 lbs	7.5 lbs	10.0 lbs	15.0 lbs	20.0 lbs	30.0 lbs
Water Used - Regeneration	56.1 gal	69.5 gal	49.6 gal	64.3 gal	90.3 gal	124.6 gal	196.2 gal
Hardness Removal - Grains	22,500	30,000	22,500	30,000	45,000	60,000	90,000
Resin Quantity - Cubic Feet	0.75 ft ³	1.0 ft ³	0.75 ft ³	1.0 ft ³	1.5 ft ³	2.0 ft ³	3.0 ft ³
Tank Size	9x35	10x35	8x44	9x48	10x54	12x52	14x65
Tank Jacket / Media Loaded	Yes	Yes	Yes	Yes	Yes	No	No
Brine Tank / Cabinet Size (Inches)	16.5 x 19.3 x 14.3	16.5 x 19.3 x 14.3	18.1 x 34.5	18.1 x 34.5	18.1 x 34.5	20.3 x 37.4	23.0 x 40.5
Salt Storage Capacity	175 lbs	175 lbs	240 lbs	240 lbs	240 lbs	350 lbs	420 lbs
Flow Rate @ 15 psi Pressure Drop	11.6 gpm	12.0 gpm	10.4 gpm	11.0 gpm	11.2 gpm	12.2 gpm	12.6 gpm
Flow Rate @ 25 psi Pressure Drop	15.6 gpm	16.0 gpm	14.3 gpm	15.0 gpm	15.1 gpm	16.2 gpm	16.6 gpm
Back Wash Flow Rate	2.0 gpm	2.4 gpm	1.5 gpm	2.0 gpm	2.4 gpm	3.5 gpm	5.0 gpm
Shipping Weight	93 lbs	110 lbs	105 lbs	122 lbs	155 lbs	158 lbs	244 lbs
Regeneration Type	Counter Current / Up Flow						
Maximum Efficiency	5,060 grains /lb salt						
Plumbing Connections	3/4" (Optional 1")						
Resin Type	Canature 8% High Capacity Ion Exchange Resin						
Electrical Requirements	Input 120V 60 Hz - Output 12V 650mA						
Water Temperature	Min 39 - Max. 100 degrees Fahrenheit						
Water Pressure	Min. 20 - Max. 125 psi						



Two piece cabinet is easier to install & service

NOVO SOFT 485 HTO WHOLE-HOUSE WATER REFINER

Truly refined soft water for your home plus eliminate bad tastes & odour!

- ✓ Dedicated carbon tank for highly effective reduction of chlorine, chloramines & organics
- ✓ Dedicated softening tank
- ✓ Enjoy two systems for less money!

Activated carbon is perhaps the most powerful absorbent known to man!



One gram = 500m² surface area
1 teaspoon = surface area of a football field



HTO Series Specifications

Specifications	485HTO-100	485HTO-150	485HTO-200	485HTO-300
	15010484	15010485	15010486	15010487
Factory Settings				
Salt Used - Per Regeneration	6.0 lbs	9.0 lbs	12.0 lbs	18.0 lbs
Water Used - Regeneration	86.4 gal	148 gal	162.4 gal	224.8 gal
Hardness Removal - Grains	25,000	37,500	50,000	75,000
Tank #1 Carbon Quantity - Cubic Feet	1.0 ft ³	1.50 ft ³	2.0 ft ³	3.0 ft ³
Tank #2 Resin Quantity - Cubic Feet	1.0 ft ³	1.50 ft ³	2.0 ft ³	3.0 ft ³
Tank Size	9x48	10x54	12x52	14x65
Tank Jacket / Media Loaded	Yes	Yes	No	No
Brine Tank / Cabinet Size (Inches)	18.1 x 34.5	18.1 x 34.5	20.3 x 37.4	23.0 x 40.5
Salt Storage Capacity	240 lbs	240 lbs	350 lbs	420 lbs
Flow Rate @ 15 psi Pressure Drop	7.2 gpm	7.4 gpm	9.0 gpm	9.2 gpm
Flow Rate @ 25 psi Pressure Drop	10.0 gpm	10.1 gpm	11.9 gpm	12.1 gpm
Back Wash Flow Rate	2.4 gpm	3.5 gpm	4.0 gpm	5.0 gpm
Shipping Weight	154 lbs	171 lbs	214 lbs	232 lbs
Regeneration Type	Counter Current / Up Flow			
Plumbing Connections	3/4" (Optional 1")			
Resin Type	Canature 8% High Capacity Ion Exchange Resin			
Carbon Type	Canature Catalytic Carbon			
Electrical Requirements	Input 120V 60 Hz - Output 12V 650mA			
Water Temperature	Min 39 - Max. 100 degrees Fahrenheit			
Water Pressure	Min. 20 - Max. 125 psi			

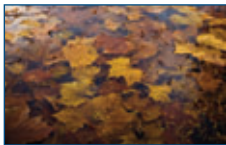
NOVOSOFT 485 SPECIALTY SYSTEMS

If you have water problems in addition to hardness then a mixed bed speciality system could be an effective and affordable solution depending on the amounts in your water.

Not only do you get luxurious soft water, you can also remove a combination of iron, manganese and tannins (colour) with our Engineered specialty combination systems.



SIM Series
Softener, Iron and
Manganese
Combination Removal



ST Series
Softener, Tannin and
Colour
Combination Removal



SIMTAN Series
Softener, Iron, Manganese
& Tannin Removal



SIM Series Specifications

Specifications	485SIM-100	485SIM-150	485SIM-200	485SIM-300
	15010460	15010461	15010462	15010463
Factory Settings - Iron & Manganese				
Salt Used - Per Regeneration	12.0 lbs	18.0 lbs	24.0 lbs	36.0 lbs
Water Used - Regeneration	52.2 gal	74.4 gal	101.4 gal	166 gal
Hardness Removal - Grains	30,000	45,000	60,000	90,000
Resin Quantity - Cubic Feet	1.0 ft ³	1.5 ft ³	2.0 ft ³	3.0 ft ³
Tank Size	9x48	10x54	12x52	14x65
Tank Jacket / Media Loaded	Yes	Yes	No	No
Brine Tank / Cabinet Size (Inches)	18.1 x 34.5	20.3 x 37.4	20.3 x 37.4	23.0 x 40.5
Salt Storage Capacity	240 lbs	350 lbs	350 lbs	420 lbs
Flow Rate @ 15 psi Pressure Drop	11.0 gpm	11.2 gpm	12.2 gpm	12.6 gpm
Flow Rate @ 25 psi Pressure Drop	15.0 gpm	15.1 gpm	16.2 gpm	16.6 gpm
Back Wash Flow Rate	2.1 gpm	2.4 gpm	3.5 gpm	5.0 gpm
Shipping Weight	125 lbs	158 lbs	161 lbs	247 lbs
Regeneration Type	Co-Current / Down Flow			
Maximum Hardness	75 Grains Per Gallon			
Maximum Iron (Ferrous)	10 ppm			
Maximum Manganese	5 ppm			
Resin Type	Canature High Efficiency Cation Ion Exchange Resin			

SIMTAN Series Specifications

Specifications	485SIMTAN-100	485SIMTAN-150	485SIMTAN-200	485SIMTAN-300
	15010480	15010481	15010482	15010483
Factory Settings - High Capacity				
Salt Used - Per Regeneration	12.0 lbs	18.0 lbs	24.0 lbs	36.0 lbs
Water Used - Regeneration	64.3 gal	90.3 gal	124.6 gal	196.2 gal
Hardness Removal - Grains	30,000	45,000	60,000	90,000
Tannins Removal	2000 ppm	3000 ppm	4000 ppm	6000 ppm
Tank #1 Resin Quantity - Cubic Feet	1.0 ft ³	1.5 ft ³	2.0 ft ³	3.0 ft ³
Tank #2 Resin Quantity - Cubic Feet	1.0 ft ³	1.5 ft ³	2.0 ft ³	3.0 ft ³
Tank Size	9x48	10x54	12x52	14x65
Tank Jacket / Media Loaded	Yes	Yes	No	No
Brine Tank / Cabinet Size (Inches)	18.1 x 34.5	20.3 x 37.4	20.3 x 37.4	23.0 x 40.5
Salt Storage Capacity	240 lbs	350 lbs	350 lbs	420 lbs
Recommended Service Flow Rate	3.0 gpm	4.5 gpm	6.0 gpm	9.0 gpm
Flow Rate @ 15 psi Pressure Drop	7.3 gpm	7.5 gpm	8.3 gpm	9.3 gpm
Flow Rate @ 25 psi Pressure Drop	10.0 gpm	10.1 gpm	11.1 gpm	11.4 gpm
Back Wash Flow Rate	2.0 gpm	2.4 gpm	3.5 gpm	5.0 gpm
Shipping Weight	125 lbs	158 lbs	161 lbs	247 lbs
Regeneration Type	Co-Current / Down Flow			
Maximum Hardness	75 Grains Per Gallon			
Maximum Tannins	3.0 ppm (Contact Customer Service for higher levels)			
Maximum Iron (Ferrous)	10.0 ppm			
Maximum Manganese	5.0 ppm			
Resin Type	Canature Cation / Anion Exchange Resin			

ST Series Specifications

Specifications	485ST-150	485ST-200	485ST-300
	15010470	15010471	15010472
Factory Settings - High Capacity			
Salt Used - Per Regeneration	18.0 lbs	24.0 lbs	36.0 lbs
Water Used - Regeneration	74.4 gal	101.4 gal	166 gal
Resin Quantity - Cubic Feet	1.5 ft ³	2.0 ft ³	3.0 ft ³
Tank Size	10x54	12x52	14x65
Tank Jacket / Media Loaded	Yes	No	No
Brine Tank / Cabinet Size (Inches)	20.3 x 37.4	20.3 x 37.4	23.0 x 40.5
Salt Storage Capacity	350 lbs	350 lbs	420 lbs
Recommended Service Flow Rate	3.0 gpm	3.0 gpm	6.0 gpm
Flow Rate @ 15 psi Pressure Drop	11.2 gpm	12.2 gpm	12.6 gpm
Flow Rate @ 25 psi Pressure Drop	15.1 gpm	16.2 gpm	16.6 gpm
Back Wash Flow Rate	2.4 gpm	3.5 gpm	5.0 gpm
Shipping Weight	158 lbs	161 lbs	247 lbs
Regeneration Type	Co-Current / Down Flow		
Maximum Hardness	20 Grains Per Gallon		
Maximum Tannins	1.0 ppm		
Resin Type	Canature Cation / Anion Exchange Resin		

All Specialty Systems	
Plumbing Connections	3/4" (Optional 1")
Electrical Requirements	Input 120V 60 Hz - Output 12V 650mA
Water Temperature	Min 39 - Max. 100 degrees Fahrenheit
Water Pressure	Min. 20 - Max. 125 psi

NOVOCLEAR 485 WHOLE-HOUSE FILTERS

Multi Media Filters

Cloudy water usually means you have suspended silt or sediment. The NovoClear 485 Multi-Media filter traps particulate matter as small as 20 microns, restoring your water to crystal clear.



Taste & Odour Filters

Chlorine and organic matter can make your water smell and taste terrible. The NovoClear 485 Taste & Odour filter uses high-quality activated carbon to absorb the problem-causing substances.

Neutralizing Filters

The NovoClear 485 Neutralizing filter raises the pH of acidic water to neutralize corrosiveness - protecting fixtures, pipes and appliances from costly damage.

Iron & Sulfur Filters

Water comes in contact with oxygen-charged manganese greensand causing oxidation into solids which can be trapped in the filter bed. Potassium permanganate is drawn through the filter bed, recharging it with oxygen.

Nexsand Turbidity Filters

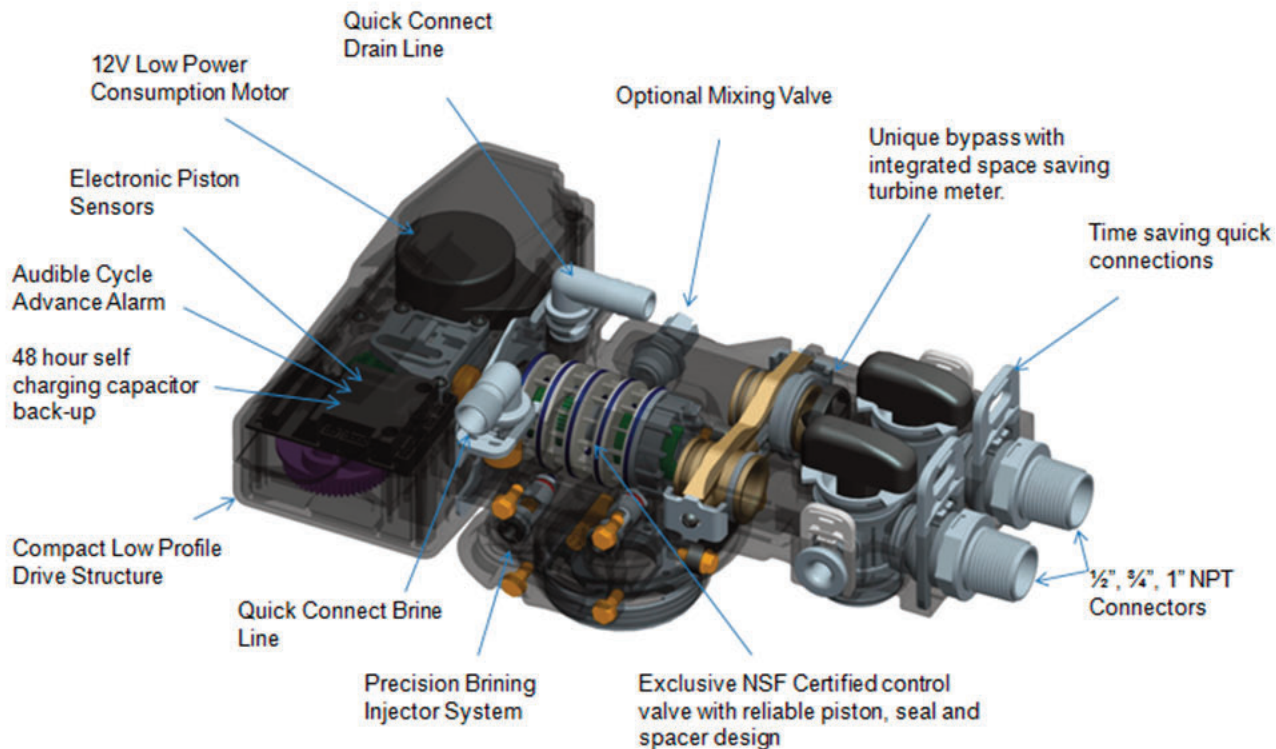
Remove suspended solids, total dissolved solids (TDS), Ferric Hydroxide (Red Water Iron) or Sediment from your well or water system down to 5 Microns. Nexsand has proven extremely effective and will double the service flow of Multi Media or Sand Filters.

Chloramine Removal Filters

Chloramines are now commonly used to disinfect municipal water supplies causing taste & odour problems. To remove chloramines a special catalytically enhanced carbon is required.

Specifications	485MM-75	485MM-100	485MM-150	485MM-200	485MM-300
	15054001	15054002	15054003	15054004	15054005
Normal Service Flow Rate	4.0 gpm	5.0 gpm	7.0 gpm	10.0 gpm	12.0 gpm
Peak Service Flow Rate	5.0 gpm	7.0 gpm	10.0 gpm	12.0 gpm	15.0 gpm
Micron Rating	15-20 micron	15-20 micron	15-20 micron	15-20 micron	15-20 micron
Backwash Flow Rate	4.0 gpm	5.0 gpm	7.0 gpm	10.0 gpm	14.0 gpm
Filter Media Volume - Cubic Feet	0.75 ft ³	1.0 ft ³	1.5 ft ³	2.0 ft ³	3.0 ft ³
Filter Tank Size	8x44	9x48	10x54	12x52	14x65
Tank Jacket / Media Loaded	Yes	Yes	Yes	No	No
Shipping Weight	79 lbs	118 lbs	144 lbs	198 lbs	342 lbs
Specifications	485TO-75	485TO-100	485TO-150	485TO-200	485TO-300
	15054006	15054007	15054008	15054009	15054010
Normal Service Flow Rate	4.0 gpm	5.0 gpm	7.0 gpm	10 gpm	12.0 gpm
Peak Service Flow Rate	5.0 gpm	7.0 gpm	10.0 gpm	12.0 gpm	15.0 gpm
Backwash Flow Rate	3.5 gpm	4.0 gpm	5.0 gpm	7.0 gpm	10.0 gpm
Filter Media Volume - Cubic Feet	0.75 ft ³	1.0 ft ³	1.5 ft ³	2.0 ft ³	3.0 ft ³
Filter Tank Size	8x44	9x48	10x54	12x52	14x65
Tank Jacket / Media Loaded	Yes	Yes	Yes	No	No
Shipping Weight	50 lbs	60 lbs	78 lbs	95 lbs	138 lbs
Specifications	485NU-75	485NU-100	485NU-150	485NU-200	485NU-300
	15054011	15054012	15054013	15054014	15054015
Normal Service Flow Rate	2.0 gpm	3.0 gpm	5.0 gpm	6.0 gpm	7.0 gpm
Peak Service Flow Rate	3.5 gpm	5.0 gpm	8.0 gpm	10.0 gpm	12.0 gpm
Backwash Flow Rate	3.5 gpm	4.0 gpm	5.0 gpm	7.0 gpm	10.0 gpm
Filter Media Volume - Cubic Feet	0.75 ft ³	1.0 ft ³	1.5 ft ³	2.0 ft ³	3.0 ft ³
Filter Tank Size	8x44	9x48	10x54	12x52	14x65
Tank Jacket / Media Loaded	Yes	Yes	Yes	No	No
Shipping Weight	93 lbs	120 lbs	164 lbs	207 lbs	330 lbs
Specifications	485IS-75	485IS-100	485IS-150	485IS-200	485IS-300
	15054016	15054017	15054018	15054019	15054020
Normal Service Flow Rate	3.0 gpm	3.0 gpm	4.0 gpm	5.0 gpm	6.0 gpm
Peak Service Flow Rate	4.0 gpm	5.0 gpm	8.0 gpm	10.0 gpm	12.0 gpm
Backwash Flow Rate	3.5 gpm	4.0 gpm	5.0 gpm	7.0 gpm	10.0 gpm
Compensated Iron Removal Capacity	4,500 ppm	6,000 ppm	9,500 ppm	12,000 ppm	18,000 ppm
KMnO4 per Regen	4 oz	4 oz	4 oz	8 oz	8 oz
Filter Media Volume - Cubic Feet	0.75 ft ³	1.0 ft ³	1.5 ft ³	2.0 ft ³	3.0 ft ³
Filter Tank Size	8x44	9x48	10x54	12x52	14x65
Tank Jacket / Media Loaded	Yes	Yes	Yes	No	No
Shipping Weight	113 lbs	129 lbs	179 lbs	233 lbs	352 lbs
Maximum Combination of Iron X 1, Manganese X 2, H ₂ S X 3		10.0 ppm	Maximum Hydrogen Sulfide		3.0 ppm
Maximum Iron (Ferrous)		7.0 ppm	Maximum Manganese		5.0 ppm
Bacterial Iron		0.0 ppm	Minimum pH		7.0
Specifications	48NEX-75	48NEX-100	48NEX-150	48NEX-200	
	15054029	15054030	15054033	15044034	
Normal Service Flow Rate	4.0 gpm	5.0 gpm	8.0 gpm	10.0 gpm	
Peak Service Flow Rate	7.0 gpm	8.0 gpm	10.0 gpm	12 gpm	
Micron Rating	3-5 micron	3-5 micron	3-5 micron	3-5 micron	
Backwash Flow Rate	5.0 gpm	7.0 gpm	10.0 gpm	14.0 gpm	
Filter Media Volume - Cubic Feet	0.75 ft ³	1.0 ft ³	1.5 ft ³	2.0 ft ³	
Filter Tank Size	8x44	9x48	10x54	12x52	
Tank Jacket	Yes	Yes	Yes	No	
Shipping Weight	90 lbs	135 lbs	205 lbs	255 lbs	
Specifications	485CLA-75	485CLA-100	485CLA-150	485CLA-200	
	15054035	15054036	15054037	15054038	
Recommended Flow Rates	4.0 gpm	5.0 gpm	7.5 gpm	10.0 gpm	
Backwash Flow Rate	3.5 gpm	4.0 gpm	5.0 gpm	7.0 gpm	
Filter Media Volume - Cubic Feet	1.5 ft ³	2.0 ft ³	3.0 ft ³	4.0 ft ³	
Filter Tank Size (qty 2)	8x44	9x48	10x54	12x52	
Tank Jacket	Yes	Yes	Yes	No	
Shipping Weight	100 lbs	120 lbs	155 lbs	190 lbs	
Carbon Type	Canature Catalytic Carbon				
All Filters					
Plumbing Connections	3/4" (Optional 1")				
Electrical Requirements	Input 120V 60 Hz - Output 12V 650mA				
Water Temperature	Min 39 - Max. 100 degrees Fahrenheit				
Water Pressure	Min. 20 - Max. 125 psi				





NOVOCLEAR 485 BIF CHEMICAL FREE IRON FILTER

Natural oxidation removes iron, manganese and sulphur without chemicals, air pumps or a venturi!

- Low maintenance two tank system
- Regenerates less frequently than traditional iron filters using up to 50% less water than manganese greensand filters



Uses up to
50% Less
Water!

Specifications	485BIF-75	485BIF-100	485BIF-150	485BIF-200	485BIF-300
	15054031	15054021	15054022	15054023	15054024
Service Flow Rates					
Normal	2.0 gpm	3.0 gpm	4.0 gpm	5.0 gpm	6.0 gpm
Peak	5.0 gpm	6.0 gpm	10.0 gpm	15.0 gpm	17.0 gpm
Backwash Flow Rate	3.5 gpm	5.0 gpm	5.0 gpm	7.0 gpm	10.0 gpm
Filter Media Volume - Cubic Feet	0.75 ft ³	1.0 ft ³	1.5 ft ³	2.0ft ³	3.0 ft ³
Filter Tank Size	8x44	10x44	10x54	12x52	14x65
Air Contact Tank Size	8x44	8x44	10x54	12x52	14x65
Media Loaded	Yes	Yes	Yes	No	No
Tank Jacket	No	No	No	No	No
Shipping Weight	140 lbs	150 lbs	188 lbs	248 lbs	368 lbs
Specifications					
	485BIFMN-75	485BIFMN-100	485BIFMN-150	485BIFMN-200	485BIFMN-300
	15054032	15054025	15054026	15054027	15054028
Service Flow Rates					
Normal	2.0 gpm	3.0 gpm	4.0 gpm	5.0 gpm	6.0 gpm
Peak	5.0 gpm	6.0 gpm	10.0 gpm	15.0 gpm	17.0 gpm
Backwash Flow Rate	3.5 gpm	5.0 gpm	5.0 gpm	7.0 gpm	10.0 gpm
Filter Media Volume - Cubic Feet	0.75 ft ³	1.0 ft ³	1.5 ft ³	2.0ft ³	3.0 ft ³
Filter Tank Size	8x44	10x44	10x54	12x52	14x65
Air Contact Tank Size	8x44	8x44	10x54	12x52	14x65
Media Loaded	Yes	Yes	Yes	No	No
Tank Jacket	No	No	No	No	No
Shipping Weight	140 lbs	150 lbs	188 lbs	248 lbs	368 lbs
Maximum Removal Amounts					
	Iron	30.0 ppm	Hydrogen Sulphide		5.0 ppm
	Manganese	1.0 ppm	Iron Bacteria Removal		Yes
	pH	If 6.0 - 6.9 use MN Models. If 7.0 < use Standard models			
Plumbing Connections	3/4" (Optional 1")				
Electrical Requirements	Input 120V 60 Hz - Output 12V 650mA				
Water Temperature	Min 39 - Max. 100 degrees Fahrenheit				
Water Pressure	Min. 20 - Max. 125 psi				

CROSS-REFERENCE CHART

NOVOSOFT WATER SOFTENERS

Old Item #	Old Description	New Item#	New Description
15010001	NVO465-75	15010452	NVO485HE-75
15010002	NVO465-100	15010453	NVO485HE-100
15010003	NVO465-150	15010454	NVO485HE-150
15010004	NVO465-200	15010455	NVO485HE-200
15010039	NVO465-300	15010456	NVO485HE-300
15010005	NVO465-75C (CABINET)	15010450	NVO485HE-75C (Cabinet)
15010006	NVO465-100C (CABINET)	15010451	NVO485HE-100C (Cabinet)

NOVOSOFT SPECIALTY SYSTEMS

SIM Series (Hardness - Iron - Manganese Reduction)

Old Item #	Old Description	New Item#	New Description
15010042	NVO465SIM-100	15010460	NVO485SIM-100
15010043	NVO465SIM-150	15010461	NVO485SIM-150
15010044	NVO465SIM-200	15010462	NVO485SIM-200
15010060	NVO465SIM-300	15010463	NVO485SIM-300

ST Series (Hardness - Tannin - Color Reduction)

Old Item #	Old Description	New Item#	New Description
15010045	NVO465ST-150 (Mixed Bed)	15010470	NVO485ST-150 (Mixed Bed)
15010046	NVO465ST-200 (Mixed Bed)	15010471	NVO485ST-200 (Mixed Bed)
15010047	NVO465ST-300 (Mixed Bed)	15010472	NVO485ST-300 (Mixed Bed)

SIMTAN Series (Hardness - Iron -Manganese - Tannin - Color Reduction)

Old Item #	Old Description	New Item#	New Description
15010107	NVOSIMTAN-100 (Twin Tank)	15010480	NVO485SIMTAN-100 (Twin Tank)
15010108	NVOSIMTAN-150 (Twin Tank)	15010481	NVO485SIMTAN-150 (Twin Tank)
15010109	NVOSIMTAN-200 (Twin Tank)	15010482	NVO485SIMTAN-200 (Twin Tank)
15010124	NVOSIMTAN-300 (Twin Tank)	15010483	NVO485SIMTAN-300 (Twin Tank)

HTO Series (Hardness, Taste & Odour) 2 Tank System

Old Item #	Old Description	New Item#	New Description
15010097	NVO465HTO-100 (Twin Tank)	15010484	NVO485HTO-100 (Twin Tank)
15010098	NVO465HTO-150 (Twin Tank)	15010485	NVO485HTO-150 (Twin Tank)
		15010486	NVO485HTO-200 (Twin Tank)
		15010487	NVO485HTO-300 (Twin Tank)

Control Valve

Old Item #	Old Description	New Item#	New Description
10010007	465 Softener Control Valve	10010060	485 Upflow
		10010062	485 Downflow
		10010063	485 Filter
		10010061	485 Cabinet

NOVOCLEAR WHOLE-HOUSE AUTOMATIC WATER FILTERS

Iron Sulphur

Old Item #	Old Description	New Item#	New Description
15030001	NVO465IS-75	15054016	NVO485IS-75
15030002	NVO465IS-100	15054017	NVO485IS-100
15030003	NVO465IS-150	15054018	NVO485IS-150
		15054019	NVO485IS-200
		15054020	NVO485IS-300

BIF Chem Free (2-Tank System)

Old Item #	Old Description	New Item#	New Description
15050092	NVO465BIF-75	15054031	NVO485BIF-75
15050051	NVO465BIF-100	15054021	NVO485BIF-100
15050067	NVO465BIF-150	15054022	NVO485BIF-150
		15054023	NVO485BIF-200
		15054024	NVO485BIF-300
15050093	NVO465BIFMN-75	15054032	NVO485BIFMN-75
15050071	NVO465BIFMN-100	15054025	NVO485BIFMN-100
15050072	NVO465BIFMN-150	15054026	NVO485BIFMN-150
		15054027	NVO485BIFMN-200
		15054028	NVO485BIFMN-300

Taste & Odour Filters

Old Item #	Old Description	New Item#	New Description
15050017	NVO465TO-75	15054006	NVO485TO-75
15050018	NVO465TO-100	15054007	NVO485TO-100
15050019	NVO465TO-150	15054008	NVO485TO-150
		15054009	NVO485TO-200
		15054010	NVO485TO-300

Sediment Turbidity Filters

Old Item #	Old Description	New Item#	New Description
15050013	NVO465MM-75	15054001	NVO485MM-75
15050014	NVO465MM-100	15054002	NVO485MM-100
15050015	NVO465MM-150	15054003	NVO485MM-150
		15054004	NVO485MM-200
		15054005	NVO485MM-300

Neutralizing Filters

Old Item #	Old Description	New Item#	New Description
15050009	NVO465NU-75	15054011	NVO485NU-75
15050010	NVO465NU-100	15054012	NVO485NU-100
15050011	NVO465NU-150	15054013	NVO485NU-150
		15054014	NVO485NU-200
		15054015	NVO485NU-300

Tannin Removal

Old Item #	Old Description	New Item#	New Description
15010106	NVO465TAN-100	15010489	NVO485TAN-100
15010488	NVO465TAN-150	15010490	NVO485TAN-150
98000074	NVO465TAN-200	15010491	NVO485TAN-200
98000110	NVO465TAN-300	15010492	NVO485TAN-300

NexSand Turbidity Filters

Old Item #	Old Description	New Item#	New Description
15050095	NVO465NEX-75	15054029	NVO485NEX-75
15050096	NVO465NEX-100	15054030	NVO485NEX-100



Novo Customer Service
Toll-Free 1-877-655-6686

A Division of Canature NA
Regina, SK . Kitchener ON
www.novowater.com

#80151026 – 12/12