

GENERAL INFORMATION

1240 SERIES MODELS AND SYSTEM CONFIGURATIONS

Table 1

Item #	Model Description	Number of Vessels	Vessel 1	Vessel 2	Vessel 3	Vessel 4	Output ⁽²⁾ (GPD)	Monitor ⁽⁴⁾
Model Series 12401								
1240101-## ⁽¹⁾	3VTFC25G	3	N/A	Dual Purpose	TFC ⁽³⁾ Membrane	Carbon Filter	25	None
1240102-## ⁽¹⁾	3VTFC50G	3	N/A	Dual Purpose	TFC ⁽³⁾ Membrane	Carbon Filter	50	
Model Series 12402								
1240200-## ⁽¹⁾	4VTFC09G	4	Sediment Filter	Carbon Filter	TFC ⁽³⁾ Membrane	Carbon Filter	9	None
1240201-## ⁽¹⁾	4VTFC25G	4	Sediment Filter	Carbon Filter	TFC ⁽³⁾ Membrane	Carbon Filter	25	
1240202-## ⁽¹⁾	4VTFC50G	4	Sediment Filter	Carbon Filter	TFC ⁽³⁾ Membrane	Carbon Filter	50	
1240203-## ⁽¹⁾	4VTFC75G	4	Sediment Filter	Carbon Filter	TFC ⁽³⁾ Membrane	Carbon Filter	75	
Model Series 12403								
1240300-## ⁽¹⁾	4VTFC09G-PB	4	Sediment Filter	Carbon Filter	TFC ⁽³⁾ Membrane	Carbon Filter	9	Smartap® Push Button
1240301-## ⁽¹⁾	4VTFC25G-PB	4	Sediment Filter	Carbon Filter	TFC ⁽³⁾ Membrane	Carbon Filter	25	
1240302-## ⁽¹⁾	4VTFC50G-PB	4	Sediment Filter	Carbon Filter	TFC ⁽³⁾ Membrane	Carbon Filter	50	
1240303-## ⁽¹⁾	4VTFC75G-PB	4	Sediment Filter	Carbon Filter	TFC ⁽³⁾ Membrane	Carbon Filter	75	

CONDITIONS FOR USE

Table 2

Source Water Supply Profile		Chemical Parameters	Max mg/L
Community/Private	Chlorinated/Non-Chlorinated	Hardness (CaCO ₃)	<256 (<15 gpg)
Feed Water Pressure ⁽⁵⁾	242-690 kPa (35-100 psig)	Iron (Fe)	<0.1
Temperature	4°-38° C (40°-100° F)	Manganese (Mn)	<0.05
pH Range	3.0 - 11.0	Hydrogen Sulfide (H ₂ S)	0.00
Maximum TDS Level	2000 mg/L	Residual Chlorine (Cl ₂)	<2.0
Turbidity**	<1.0 NTU	** Nephelometric Turbidity Unit	
Maximum SDI***	<4.0	*** Silt Density Index: Value stated in SDI units.	

NOTES:

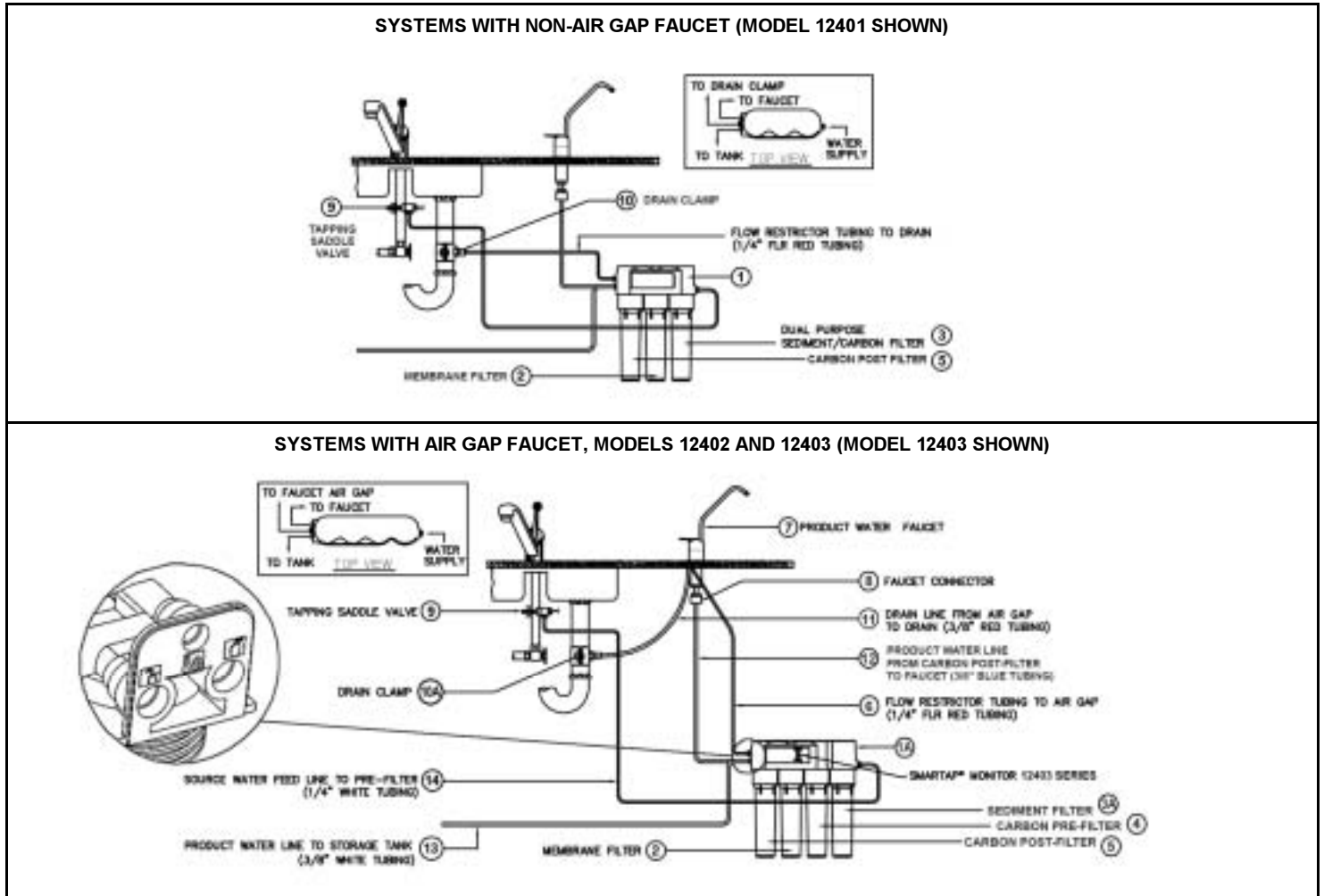
1. ## is an item number suffix which refers to various product appearances or optional components supplied with the model.
2. Manufacturer's Specification only with inlet conditions of 345 kPa (50 psig), 25° C (77° F), going to atmosphere.
3. TFC refers to reverse osmosis membranes constructed from a THIN FILM COMPOSITE.
4. SMARTAP® PUSH BUTTON MONITOR: Indicator lights located on the module cover report system status.
5. PRESSURE REGULATOR IS RECOMMENDED FOR FEED WATER PRESSURES EXCEEDING 552 kPa (80 psig).

OPTIONS AND ACCESSORIES

PRODUCT WATER FAUCETS	BOOSTER PUMP
Faucets may be supplied as Air Gap or Non-Air Gap.	A booster pump may be used if system pressure is below 242 kPa (35 psi). Pump should be placed near RO Module and installed in feed water line just before it enters Module.

GENERAL INFORMATION

This Owner's Guide covers all components that may be included with a system. Information relating to any component that is NOT included with your system may be disregarded.

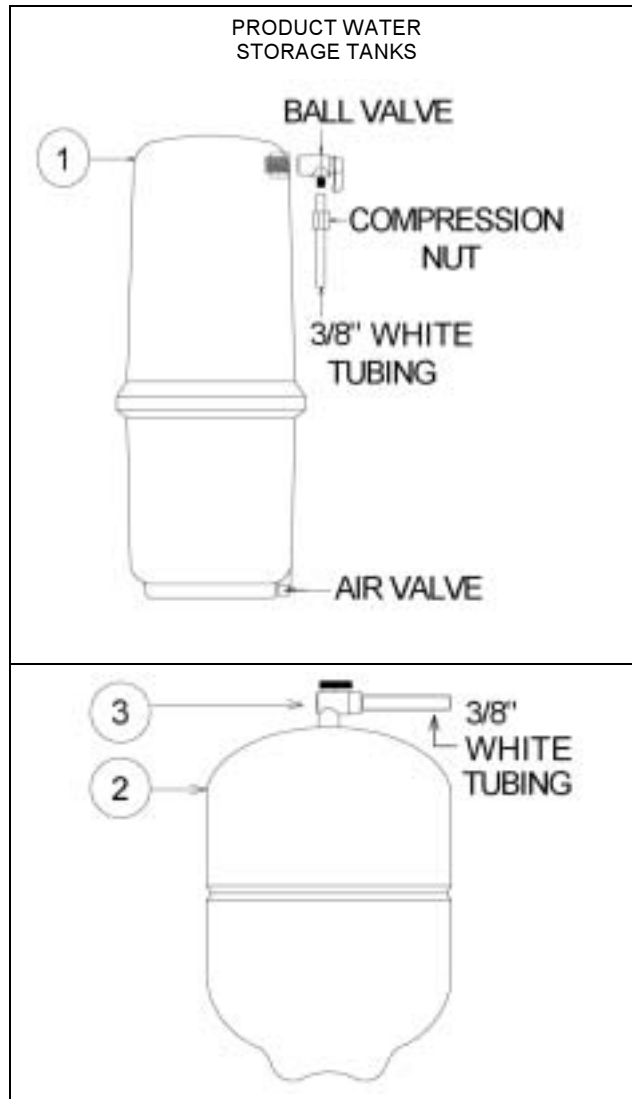


REVERSE OSMOSIS SYSTEM		
Item	Description	Part No.
1	3 Vessel Module, Without Quality Monitor	Pg. 8, Fig 8.A
1A	4 Vessel Module, Without Quality Monitor 4 Vessel Module, With Quality Monitor	Pg. 9, Fig 8.B
MEMBRANE AND FILTERS		
2	Reverse Osmosis TFC Membrane 9 GPD, Yellow Casing, Red Tape 25 GPD, Yellow Casing, Black Tape 50 GPD, Yellow Casing, White Tape 75 GPD, Yellow Casing, Blue Tape	33001071 33001068 33001033 33001056
3	Dual Purpose Sediment/Carbon Filter	41400076
3A	Sediment Filter	41400008
4	Carbon Pre-Filter	41400009
5	Carbon Post Filter	41400009
FLOW RESTRICTOR TUBING		
6	Flow Restrictor Tubing 9 GPD 25 GPD 50 GPD 75 GPD	40600034 40600040 40600041 40600042

PRODUCT WATER FAUCETS		
Item	Description	Part No.
7	Chrome-Plated Metal, Non-Air Gap	Pg. 7, Fig 7
8	Chrome-Plated Metal, Air Gap Connector, Faucet 3/8" x 7/16"	33503302
INSTALLATION KIT		
Complete Kit		
9	Supply Valve, Saddle-Tapping	92276
10	Drain Clamp, Saddle Clamp, Non-Air Gap, 1/4"	92159
10A	Drain Clamp, Saddle Clamp, Air Gap, 3/8"	92160
11	Tubing, 3/8", Red	87604
12	Tubing, 3/8", Blue	87600
13	Tubing, 3/8", White	115207
14	Tubing, 1/4", White	115200
n/s**	Screw, Mounting Bracket (2 each)	32701006
n/s**	Elbow, Stem, 3/8" (2 each)	33501071
n/s**	Elbow, Stem 1/4" (2 each)	33501064
n/s**	Owner's Guide	36101290

Figure 1.A: Component and Interconnection Locators, Models 12401, 12402, and 12403.

GENERAL INFORMATION



PRODUCT WATER STORAGE TANKS - ALL SYSTEMS		
Item	Description	Part No.
1	Storage Tank Assembly, Polymer	92313
2	Storage Tank Assembly, Metal	92342
3	Ball Valve, 3/8"	33503601

Figure 1.B: Product Water Storage Tanks.