



557 DURAWALL® Bathtub Walls

Fiberglass • Premier • Fit Standard 30"x60" and 32"x60" Bathtubs



The 557 DURAWALL® fiberglass bathtub wall system from E.L. Mustee & Sons, Inc. brings together the company's best in exceptional design, outstanding features and the highest quality in molded fiberglass bathtub walls.

You can count on the 557 DURAWALL® to make a statement of elegance and quality in any bathtub alcove.

Design Features:

- Produced from high-grade, reinforced, molded fiberglass for optimum strength using matched metal molds.
- Ideal for new or remodel projects...fits all Topaz™ fiberglass bathtubs, as well as standard 30" x 60" or 32" x 60" bathtubs of other manufacturers..
- Includes four large, molded-in, self-draining shelf ideal for shampoo, soap, etc.
- Five (5) panel wall system with seamless corner panels and overlapping edges, create a watertight wall surround.
- Panels can be trimmed to simplify installation in out-of-plumb alcoves or for installing DURATRIM® window kits.
- Adhesive mounts to drywall or like surfaces
- Available in white or bone.
- Textured, colorfast semi-gloss finish, resists scuffs.
- Mold and mildew-resistant...easy to clean

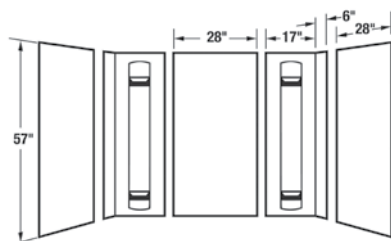
Code Accepted:

DURAWALL® bathtub walls meet or exceed performance requirements as listed:

- American Society of Testing and Materials (ASTM) – D635, E-84 and E-162
- American National Standards Institute (ANSI) - Specification ANSI Z 124.1.2
- Inhalation Toxicity Test – to evaluate inhalation health hazard with combustible products.
- CAN/ULC S102-07 Burn and Smoke Test



Specifications



General: Furnish and install as shown on plans, DURAWALL® Bathtub Walls model ____ (557WHT, 557BN), as manufactured by E.L. Mustee & Sons, Inc. The wall system shall be five-piece construction with molded-in shelf. panels shall include 20% fiberglass reinforced composite material and be manufactured with matched metal molds under extreme heat and pressure with a uniform thickness of 85 mils. scuff-resistant surface. Unit shall meet or exceed applicable test, per ANSI Specification Z 124.1. Color ____ (White, Bone).

Requires three to five 11 oz. cartridges of panel adhesive labeled for bonding to Bathtub and Shower walls. Do not use adhesive containing tar, asphalt, lacquer thinner or toluene.

Model	Color	Fits Alcove
557WHT	White	30" x 60" or 32" x 60"
557BN	Bone	30" x 60" or 32" x 60"

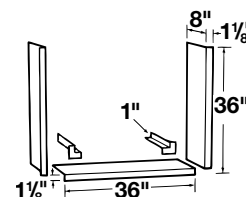
300.600W/300.600BW DURATRIM™ Fiberglass Window Trim Kit



For existing windows, Mustee's fiberglass window trim kits will create a beautiful finish.

General: Furnish and install as shown on plans, DURATRIM® Window Trim Kit model 300.600, as manufactured by E.L. Mustee & Sons, Inc. Made of fiberglass, consists of three 36" x 8" panels and two 8" x 1" corner molding pieces. Adhesive provided. Shall meet ANSI Specification Z 124.1.2. Color: ____ (White, Bone).

Model	Color
300.600W	White
300.600WBN	Bone





56 DURAWALL® Bathtub Walls

Thermoplastic • Deluxe • Fit Whirlpool Bathtubs Up to 72" Wide x 42" Deep



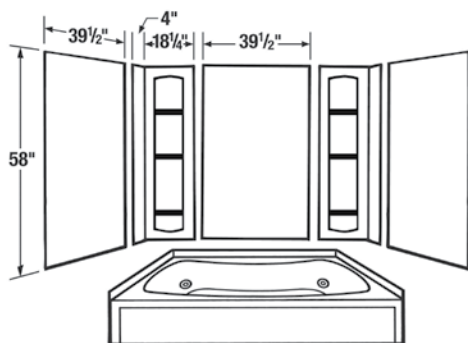
The expansive, whirlpool-sized 56 DURAWALL® thermoplastic bathtub wall system from E.L. Mustee & Sons, Inc. brings together the company's best in exceptional design, outstanding features and the highest quality in molded thermoplastic bathtub walls.

You can count on the 56 DURAWALL® to make a statement of elegance and quality in any alcove where your plans call for a large bathtub or whirlpool.

Design Features:

- Formed from high-grade thermoplastic
- Ideal for new or remodel projects...fits all Topaz™ fiberglass bathtubs, as well as standard 30" x 60" or 32" x 60" bathtubs, and larger bathtubs & whirlpools up to 42" deep by 72" wide of other manufacturers.
- Panels can be trimmed to simplify installation in out-of-plumb alcoves or for installing DURATRIM® window kits
- Includes six large, molded-in, self-draining shelves ideal for shampoo, soap, etc.
- Five (5) panel wall system with seamless corner panels and overlapping edges, create a watertight wall surround.
- Adhesive mounts to drywall or like surfaces
- Available in white or bone.
- Smooth, colorfast glossy finish, resists scuffs.
- Mold and mildew-resistant...easy to clean

Specifications



General: Furnish and install as shown on plans DURAWALL® Bathtub Walls, model ____ (56WHT, 56BN), as manufactured by E.L. Mustee & Sons, Inc. The deluxe hi-impact Co/Poly wall system shall be five-piece construction with six formed shelves, and one-piece, seamless corner panels with overlapping edges and have uniform color throughout entire thickness. Color ____ (White, Bone).

Requires five or more 11 oz. cartridges of panel adhesive labeled for bonding to Bathtub and Shower walls. Do not use adhesive containing tar, asphalt, lacquer thinner or toluene.

Model	Color	Fits Alcove
56WHT	White	Up to 42" deep by 72" wide
56BN	Bone	Up to 42" deep by 72" wide

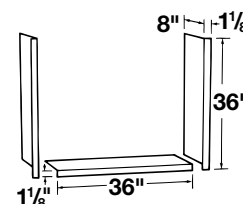
52.600W DURATRIM™ Thermoplastic Window Trim Kit, White



For existing windows, Mustee's thermoplastic window trim kits will create a beautiful finish.

General: Furnish and install as shown on plans, DURATRIM™ Window Trim Kit Model 52.600W, as manufactured by E. L. Mustee & Sons, Inc. Made of white, high-impact thermoplastic, consists of three 36" by 8" panels. Color: White.

Model	Color
52.600	White



To reorder, specify ADV-389

Notice: Our continuous commitment to product improvement may result in changes to product specifications without notice. Patented and patents pending. © 2012 E.L. Mustee ADI/6-12/BSM. Made and Printed in U.S.A.