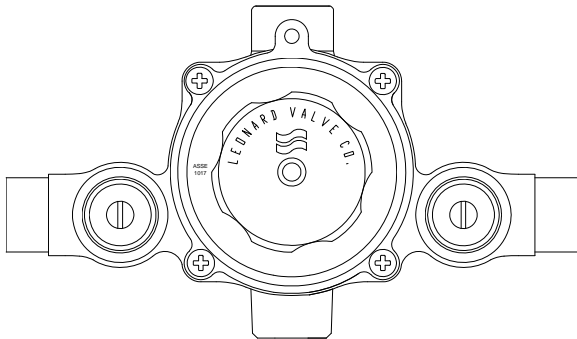


Thermostatic MIXING VALVES

ECO-MIX™



TM-20-LF-E-RF, TM-26-LF-E-RF

SWEAT CONNECTIONS ONLY

This product is certified to meet Low Lead requirements of wetted surface area containing less than 0.25% lead by weight

Engineer's Approval	Job # _____
	Arch/Eng. _____
	Contractor _____


TYPE TM

TM-20-LF-E-RF _____

TM-26-LF-E-RF _____


 TM-20-LF-E-RF

- Thermostatic water mixing valve
- DURA-trol® solid bimetal thermostat directly linked to valve porting to control the intake of hot and cold water and compensate for supply temperature or pressure fluctuations. DURA-trol® is highly responsive and cannot be damaged by extremes in temperature.
- ¾" Sweat inlets and outlet
- 1 GPM (3.7 l/m) minimum flow capacity
- Integral combination checkstops
- Internal parts of lead free bronze, lead free brass, and stainless steel
- Integral wall support
- Color-coded dial, HOT-COLD with directional indicators
- Maximum operating pressure 125 PSI (860 KPA)
- Adjustable high temperature limit stop set for 120° F (49° C)
- See Flow Capacity Chart, reverse side, to select correct size
- Locking temperature adjustment knob

Valve is ASSE 1017 Certified 

 TM-26-LF-E-RF

- Thermostatic water mixing valve
- ¾" Sweat inlets and outlet
- 1 GPM (3.7 l/m) minimum flow capacity
- Same as TM-20-LF above
- See Flow Capacity Chart, reverse side, to select correct size

Valve is ASSE 1017 Certified 

Valve is CSA Certified 

OPTIONS

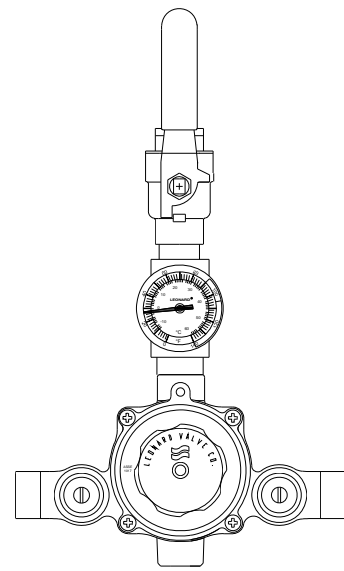
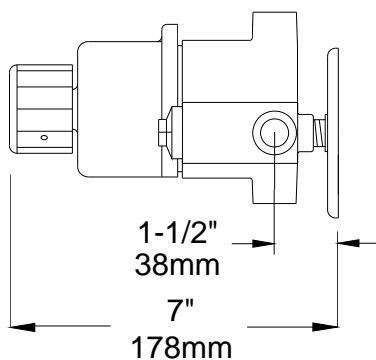
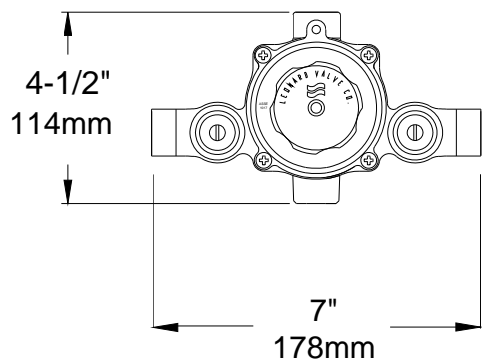
- SUFFIX BDT** – Ball valve with dial thermometer (shown on page 2)
- SUFFIX IT** – Inlet thermometers (ship loose)
- SUFFIX LWS** - Less Wall support

NOTE: CP option is NOT available

Note: Leonard Valve Company reserves the right of product, or design modifications without notice or obligation.

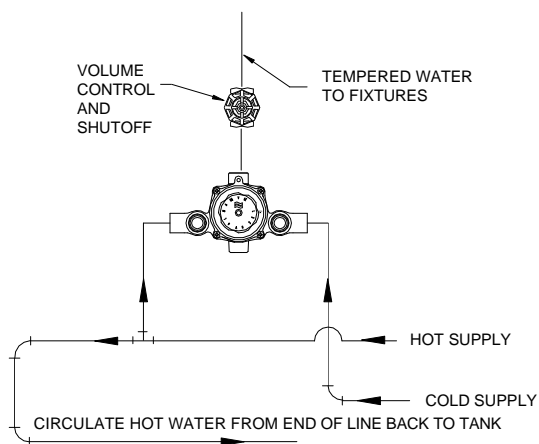


1360 Elmwood Avenue, Cranston, RI 02910 USA
Phone: 401.461.1200 Fax: 401.941.5310
Email: info@leonardvalve.com
Web Site: <http://www.leonardvalve.com>

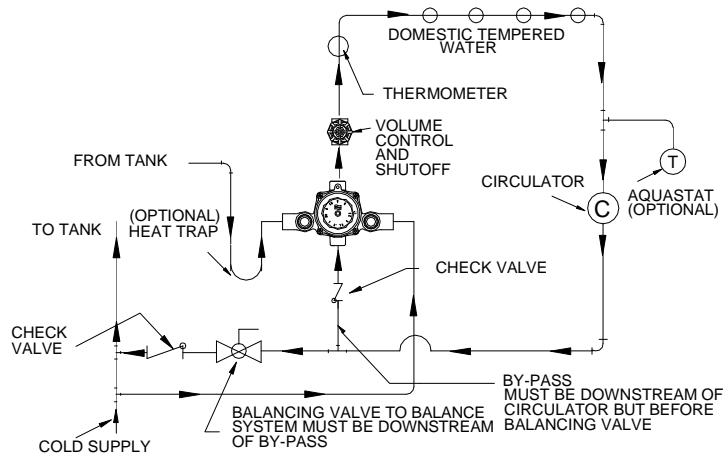


BDT OPTION

REQUIRED PIPING METHOD #1



REQUIRED PIPING METHOD #2



MODEL	IN	OUT	MINIMUM FLOW (GPM) (l/min)	SYSTEM PRESSURE DROP (PSIG)										
				5	10	15	20	25	30	35	40	45	50	PSI
				,3	.7	.97	1.4	1.7	2.1	2.4	2.8	3.1	3.4	BAR
TM-20-LF-E	3/4"	3/4"	1.0	5	7.3	9	11	13	14	15	16	17	18	GPM
			3.7	19	28	34	42	49	53	57	60	64	68	l/min
TM-26-LF-E	3/4"	3/4"	1.0	7	10	13	15	17	19	21	23	25	26	GPM
			3.7	26	38	49	57	64	72	80	87	95	98	l/min



1360 Elmwood Avenue, Cranston, RI 02910 USA
 Phone: 401.461.1200 Fax: 401.941.5310
 Email: info@leonardvalve.com
 Web Site: <http://www.leonardvalve.com>