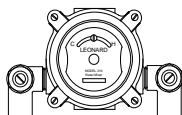




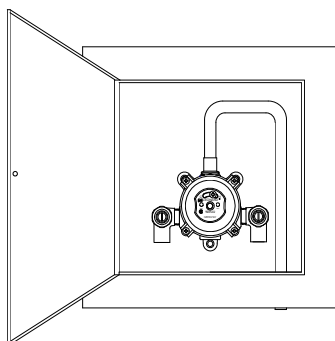
## THERMOSTATIC MIXING VALVES

*ECO-MIX*™

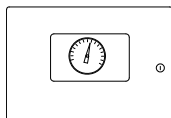
210-F-LF



C-210-AF-BR-LF



Valve assembly is certified to meet Low-Lead requirements of wetted surface area containing less than 0.25% lead by weight. All other fittings and components, the sum total of which comprise the wetted surface of this product contains less than one quarter of one percent of lead by weight.



SUFFIX VIEW

<b>Engineer's Approval</b>	Job # _____
	Arch/Eng. _____
	Contractor _____

Submittal Data Sheet S-1485-LF  
July 2013

## MODEL 210-LF

Line Control for Lavatories, Showers, Baths, Sinks,  
Specialized Washing Applications

210-F-LF

TM-554-210-LF

C-210-AF-BR-LF

C-210-AF-TR-LF

ASSE 1017 CERTIFIED



210-F-LF, 1/2" angle checkstops, sweat connections

- Thermostatic Water Mixing Valve
- DURA-trol® solid bimetal thermostat directly linked to valve porting to control the intake of hot and cold water and compensate for supply temperature or pressure fluctuations. DURA-trol® is highly responsive and cannot be damaged by extremes in temperature.
- 0.5 GPM (1.9 l/m) minimum flow capacity
- Integral combination checkstops
- Internal parts of lead free bronze, lead free brass, and stainless steel
- Temperature selector handle with scale: COLD-HOT
- Maximum operating pressure 125 PSI (860 KPA)
- Adjustable high temperature limit stop set for 110° F (43° C)
- See Flow Capacity Chart, Page 2

TM-554-210-LF, 1/2"

- Thermostatic Water Mixing Valve
- Inlet Checkstops
- Outlet piping with ball valve and dial thermometer

C-210-AF-BR-STSTL CABINET ASSEMBLY, 1/2"

- Thermostatic Water Mixing Valve
- Bottom inlet and outlet piping with copper tube connections
- Stainless steel recessed cabinet, #4 finish, with door, left-hand hinge, flange, and cylinder lock
- Factory assembled and tested

C-210-AF-BR-STSTL CABINET ASSEMBLY, 1/2"

- As above with top inlet

### OPTIONS

- \_\_\_ SUFFIX BWE – Recessed cabinet, baked white enamel finish
- \_\_\_ SUFFIX CP – Chrome plated finish
- \_\_\_ SUFFIX 37C – With dial thermometer on outlet (0-140°F, -10-60°C, 3 color)
- \_\_\_ SUFFIX EXP – Exposed cabinet
- \_\_\_ SUFFIX TOP – Top inlets
- \_\_\_ SUFFIX BRKT – Wall mounting bracket
- \_\_\_ SUFFIX LC – Less Checks

Note: Leonard Valve Company reserves the right of product, or design modifications without notice or obligation.

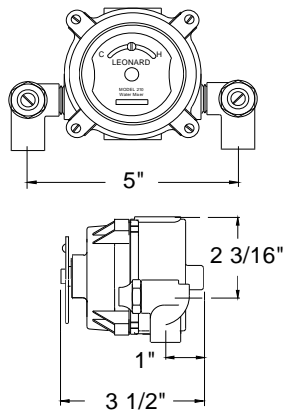
1360 Elmwood Avenue, Cranston, RI 02910 USA

Phone: 401.461.1200 Fax: 401.941.5310

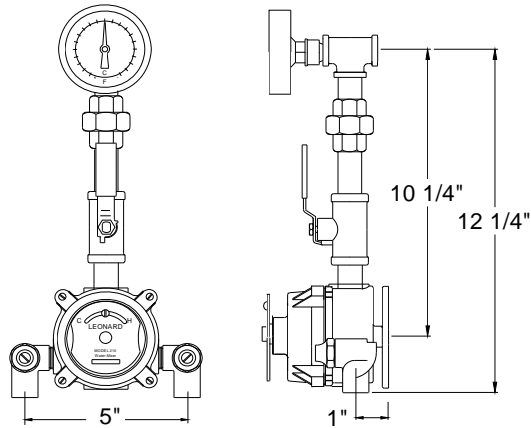
Email: [info@leonardvalve.com](mailto:info@leonardvalve.com)

Web Site: <http://www.leonardvalve.com>

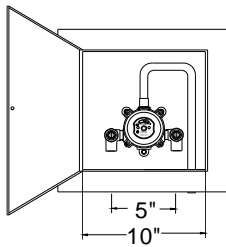
210-LF-F



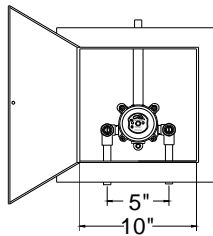
TM-554-210-LF



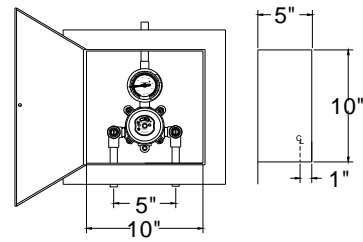
C210-AF-BR-LF



C210-AF-TR-LF

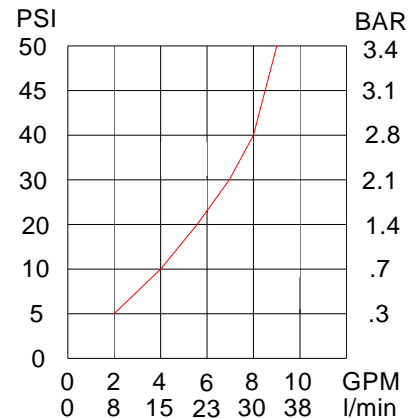


C210-AF-TR-LF-37C



## FLOW CAPACITIES

MODEL	IN	OUT	MINIMUM FLOW (GPM)	PRESSURE DROP							PSI
				5	10	20	30	40	45	50	
TA-LF	1/2"	1/2"	L/MIN	.3	.7	1.4	2.1	2.8	3.1	3.4	BAR
			0.5	2.0	4	5.5	7	8	8.5	9.0	GPM
			1.9	7.6	15	21	26	30	32	34	L/MIN



**CAUTION!** All thermostatic water mixing valves have limitations. They will NOT provide the desired accuracy outside of their flow capacity range. Consult the Flow Capacity Chart and DO NOT OVERSIZE. Minimum flow must be no less than as indicated.

**\*NOTE:** A limit stop, set for 110°F (43°C), is simply a mechanical setting to prevent excessive handle rotation. If incoming water is hotter than 135°F (57°C), the temperature of the factory test, the valve when turned to full HOT may deliver water in excess of 110°F and the limit stop MUST BE RESET BY THE INSTALLER



1360 Elmwood Avenue, Cranston, RI 02910 USA

Phone: 401.461.1200 Fax: 401.941.5310

Email: [info@leonardvalve.com](mailto:info@leonardvalve.com)

Web Site: <http://www.leonardvalve.com>