

Features

- Premium construction ensures durability and reliability.
- Includes showerhead with arm and flange, and valve trim plate.
- 2.0 gpm (7.6 lpm) showerhead with Katalyst™ Spray Technology.
- Trim only, requires valve to complete installation.

Required Accessories

K-304/K-P304 Series Rite-Temp® Valves

or

K-2971-KS 3/4" Pressure-balancing Valve

Adapters, Rough-in and Extension Kits

1073881



Codes/Standards

ASME A112.18.1/CSA B125.1

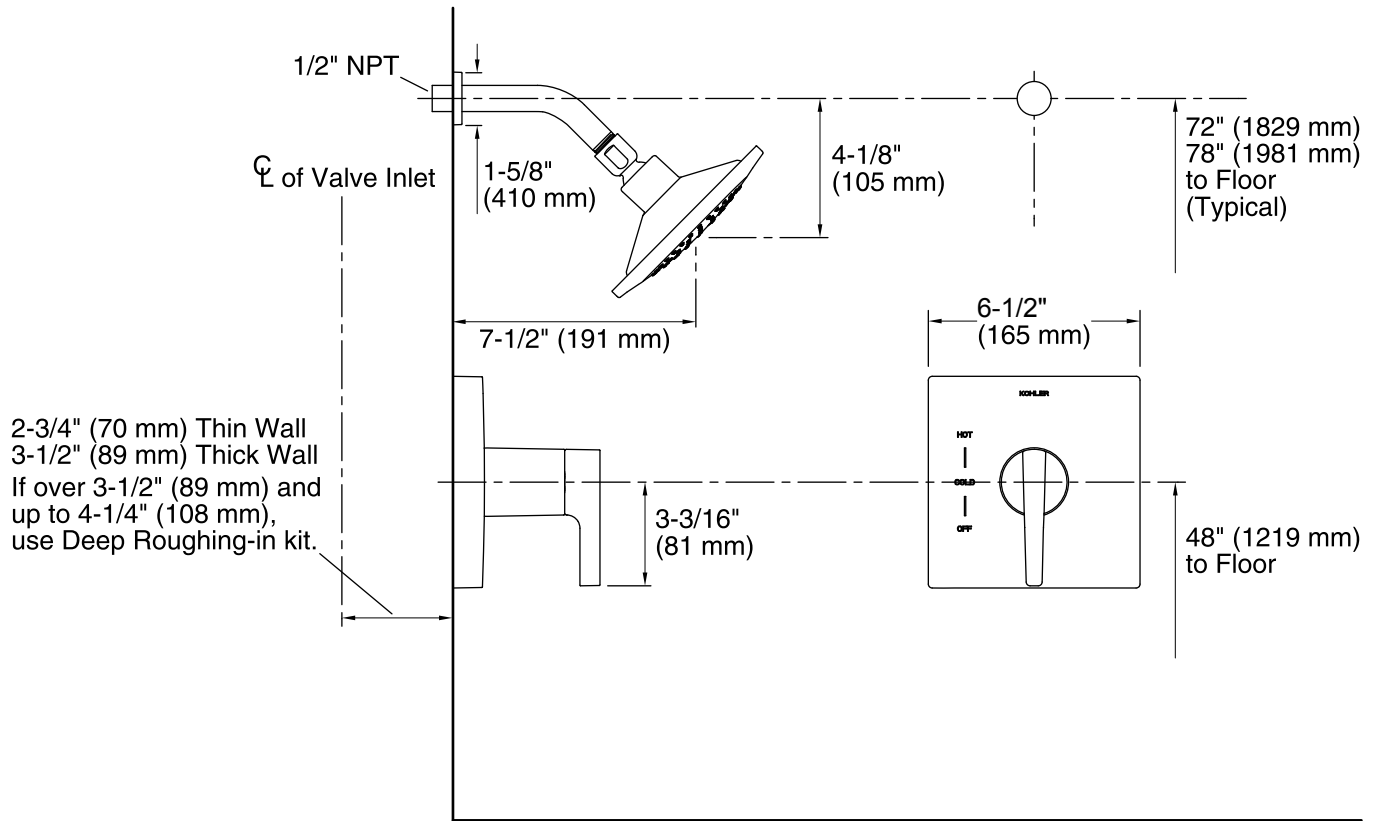
ASSE 1016/ASME A112.1016/CSA B125.16

DOE - Energy Policy Act 1992

EPA WaterSense®

California Energy Commission (CEC)

See website for detailed warranty information.



Technical Information

All product dimensions are nominal.

Valve body: Machined Brass

Showerhead:

Rated maximum flow: 2 gal/min (7.6 l/min)

Pressure: 45 psi (3.1 bar)

Notes

Install this product according to the installation guide.

NOTICE: Risk of product damage. Long screws, for installing trim, can damage the K-2971-KS valve. Consult the trim installation guide to verify if the thin wall installation kit trim installation guide to verify if the thin wall installation kit (88526) is needed.