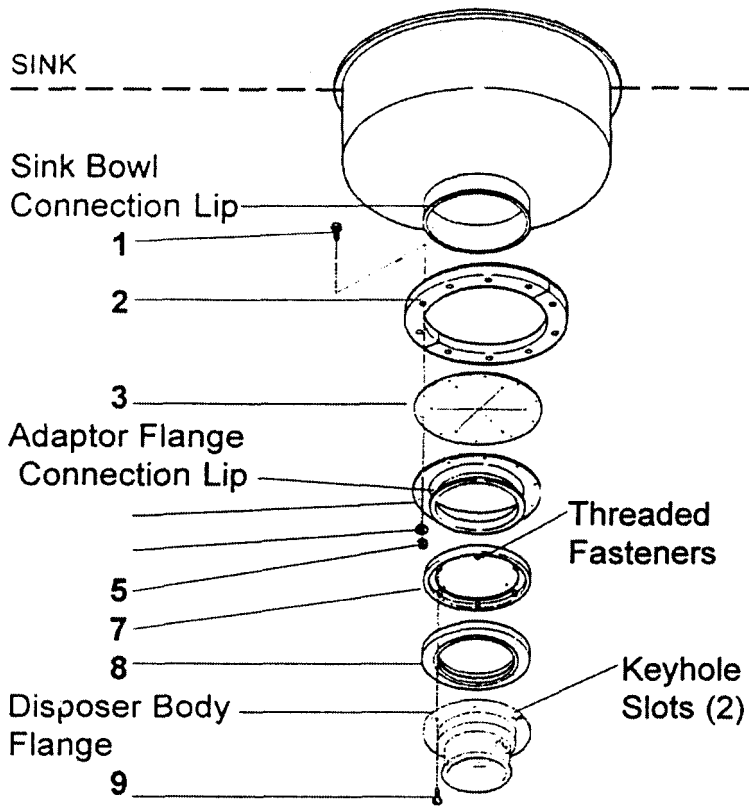


This adaptor will fit a sink opening
8" I.D. and 9 1/4" O.D.



Part Numbers

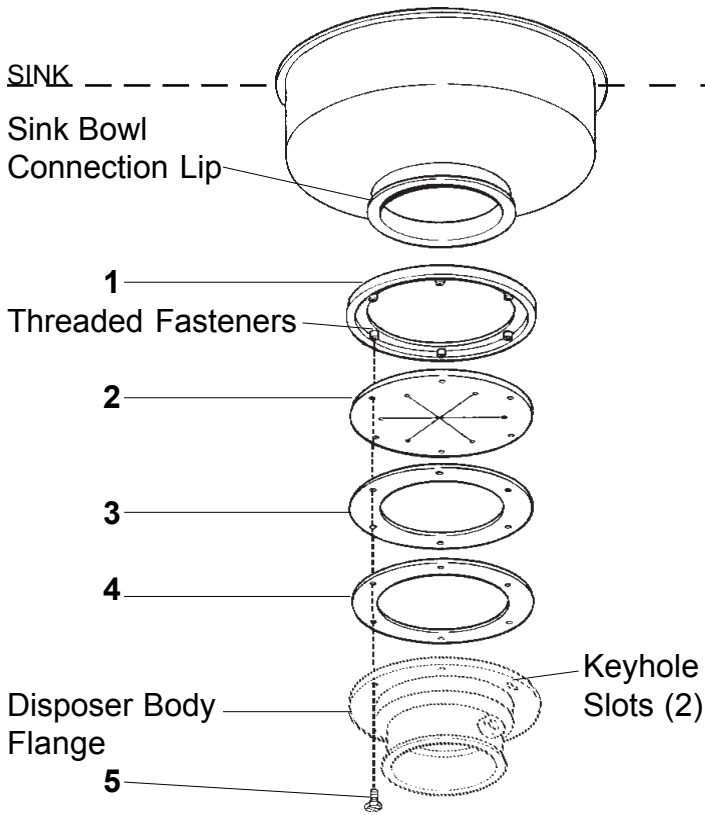
I.D. No.	Part No.	Qty	Description
1	1491	10	Screw
2	11279	1	Split Ring
3	11280	1	Flat Gasket
4	11278-A	1	Adapter Flange
5	11444	10	Lock Washer
6	3136	10	Nut
7	11004	1	Mounting Flange
8	11016	1	Mounting Gasket
9	1491	6	Screw

Installation Instructions (Suggested Assembly Method)

- Place the split ring (2) around the sink bowl connection neck (located just above the sink bowl connection lip). Insert screws (1) through the split ring (2), flat gasket (3), and adaptor flange (4). With screws protruding through the adaptor flange (4), attach lock washers (5) and nuts (6). Tighten all screws evenly.
- Place mounting flange (7) over the adaptor flange connection lip (4). Push mounting flange (7) up out of the way and fit inside groove of the mounting gasket (8) onto the adaptor flange connection lip (4).
- Move mounting flange (7) down over mounting gasket (8). Be certain that the threaded fasteners in the mounting flange (7) fit into recesses in the top of the mounting gasket (8).
- Attach two screws (9) through opposite holes in the mounting gasket (8), and into the threaded fasteners in the mounting flange (7). The screws (9) should be protruding approximately 1/4 inch below the mounting gasket (8).
- Position the disposer beneath the mounting gasket (8) and engage the two protruding screws in the keyhole slots in the disposer body flange. Assemble the remaining screws (9) and turn the disposer into place for plumbing connections. Tighten all screws evenly to secure the unit.

MOUNTING ADAPTOR (# 11327-A)

This adaptor will fit a sink opening of:
4 1/2" I.D. and 5 1/8" O.D.



Part Numbers

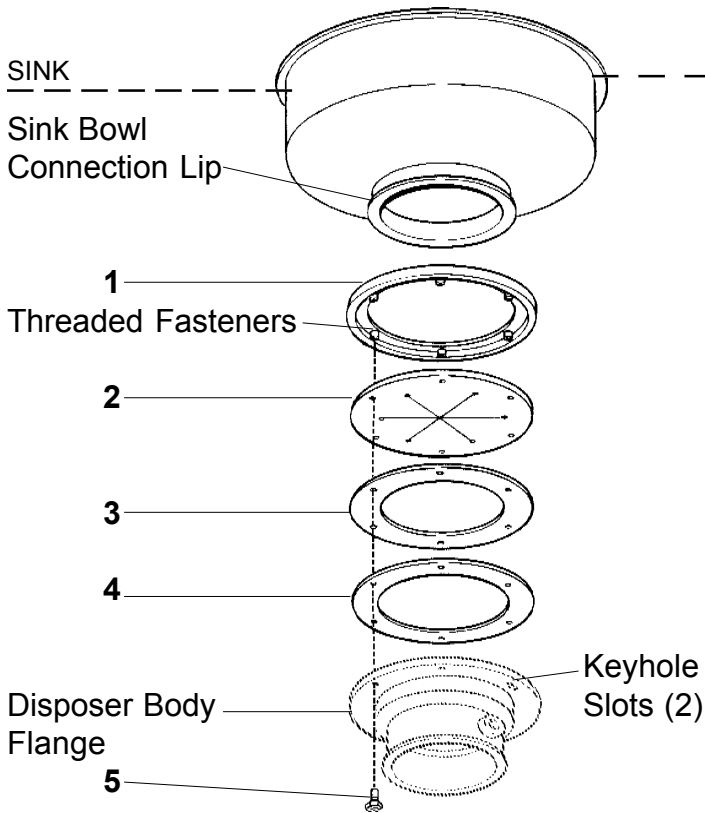
I.D. No.	Part No.	Qty	Description
1	11004-A	1	Mounting Flange
2	11342-A	1	Mounting Gasket
3	11293	1	Support Ring
4	11292	1	Flat Gasket
5	1491	6	Screw

Installation Instructions (Suggested Assembly Method)

1. Place mounting flange (1) up over existing sink bowl connection lip. It may require a slight force fit.
2. Push mounting flange (1) up out of the way and fit inside groove of mounting gasket (2) onto the sink bowl connection lip.
3. Move mounting flange (1) down over mounting gasket (2). Be certain that the threaded fasteners in the mounting flange (1) fit into recesses in the top of the mounting gasket (2).
4. Attach two screws (5) through opposite holes in the flat gasket (4), support ring (3), mounting gasket (2) and into the threaded fasteners in the mounting flange (1). The screws (5) should be protruding approximately 1/4 inch below the flat gasket (4).
5. Position the disposer beneath the flat gasket (4) and engage the two protruding screws in the keyhole slots in the disposer body flange. Assemble the remaining screws (5) and turn the disposer into place for plumbing connections. Tighten all screws evenly to secure the unit.

MOUNTING ADAPTOR (# 11327-B)

This adaptor will fit a sink opening of:
6" I.D. and 7 3/16" O.D.

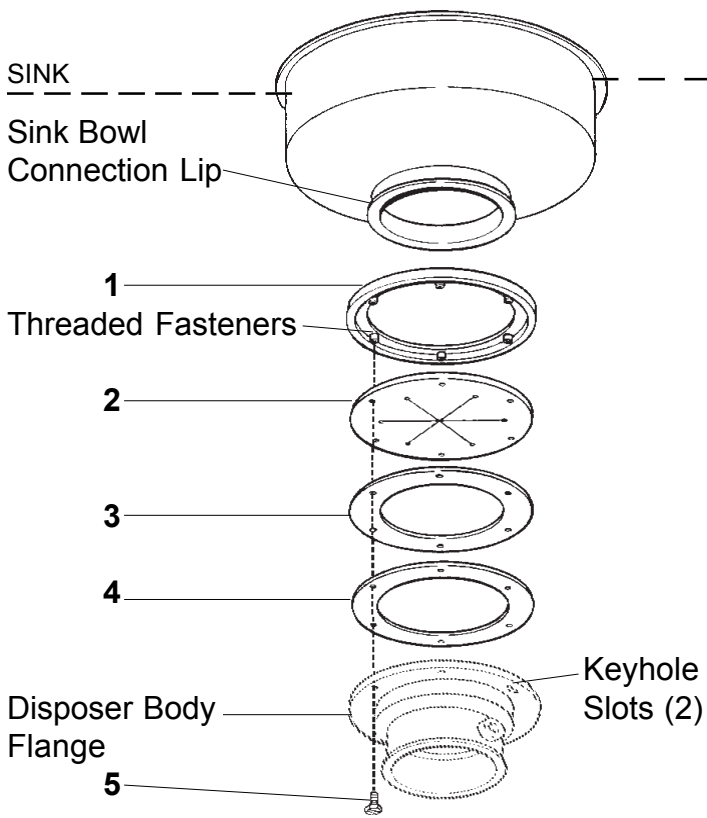


Part Numbers

I.D. No.	Part No.	Qty	Description
1	11004	1	Mounting Flange
2	11342	1	Mounting Gasket
3	11293-B	1	Support Ring
4	11292	1	Flat Gasket
5	1491	6	Screw

Installation Instructions (Suggested Assembly Method)

1. Place mounting flange (1) up over existing sink bowl connection lip. It may require a slight force fit.
2. Push mounting flange (1) up out of the way and fit inside groove of mounting gasket (2) onto sink bowl connection lip.
3. Move mounting flange (1) down over mounting gasket (2). Be certain that the threaded fasteners in the mounting flange (1) fit into recesses in the top of the mounting gasket (2).
4. Attach two screws (5) through opposite holes in the flat gasket (4), support ring (3), mounting gasket (2) and into the threaded fasteners in the mounting flange (1). The screws (5) should be protruding approximately 1/4 inch below the flat gasket (4).
5. Position the disposer beneath the flat gasket (4) and engage the two protruding screws in the keyhole slots in the disposer body flange. Assemble the remaining screws (5) and turn the disposer into place for plumbing connections. Tighten all screws evenly to secure the unit.



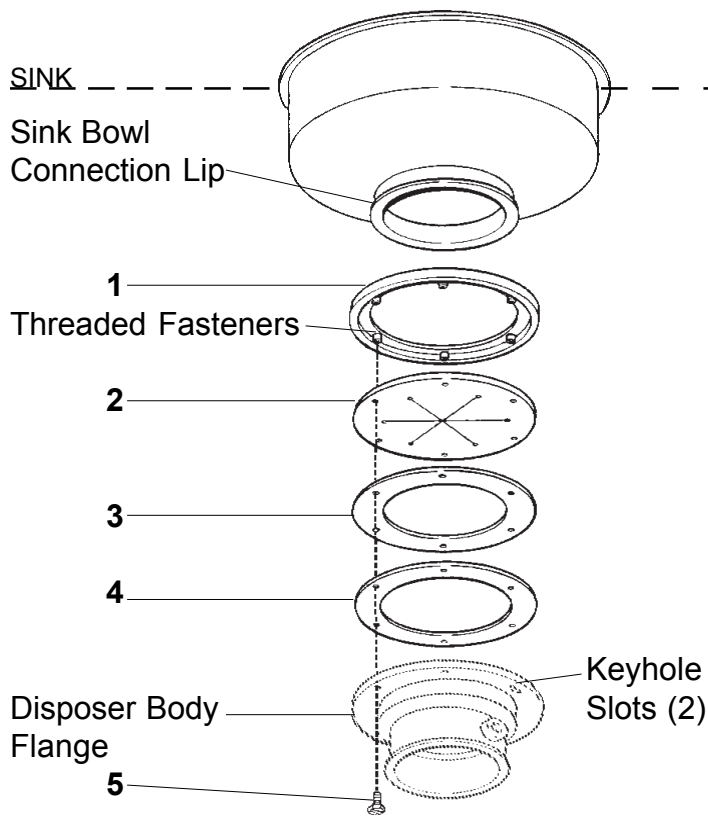
This adaptor will fit a sink opening of:
5 1/4" I.D. and 5 11/16" O.D.

Part Numbers

I.D. No.	Part No.	Qty	Description
1	11004-D	1	Mounting Flange
2	11342-B	1	Mounting Gasket
3	11293-A	1	Support Ring
4	11292	1	Flat Gasket
5	1491	6	Screw

Installation Instructions (Suggested Assembly Method)

1. Place mounting flange (1) up over existing sink bowl connection lip. It may require a slight force fit.
2. Push mounting flange (1) up out of the way and fit inside groove of mounting gasket (2) onto sink bowl connection lip.
3. Move mounting flange (1) down over mounting gasket (2). Be certain that the threaded fasteners in the mounting flange (1) fit into recesses in the top of the mounting gasket (2).
4. Attach two screws (5) through opposite holes in the flat gasket (4), support ring (3), mounting gasket (2) and into the threaded fasteners in the mounting flange (1). The screws (5) should be protruding approximately 1/4 inch below the flat gasket (4).
5. Position the disposer beneath the flat gasket (4) and engage the two protruding screws in the keyhole slots in the disposer body flange. Assemble the remaining screws (5) and turn the disposer into place for plumbing connections. Tighten all screws evenly to secure the unit.



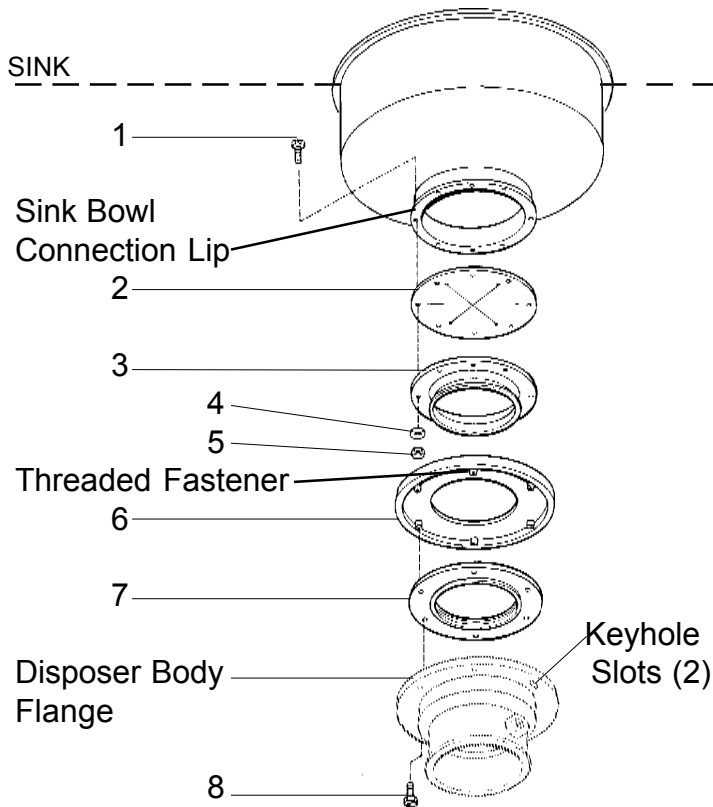
This adaptor will fit a sink opening of:
6" I.D. and 6 1/2" O.D.

Part Numbers

I.D. No.	Part No.	Qty	Description
1	11004-B	1	Mounting Flange
2	11342	1	Mounting Gasket
3	11293-B	1	Support Ring
4	11292	1	Flat Gasket
5	1491	6	Screw

Installation Instructions (Suggested Assembly Method)

1. Place mounting flange (1) up over existing sink bowl connection lip. It may require a slight force fit. **Do not use existing LOOSE RING.**
2. Push mounting flange (1) up out of the way and fit inside groove of mounting gasket (2) onto the sink bowl connection lip.
3. Move mounting flange (1) down over mounting gasket (2). Be certain that the threaded fasteners in the mounting flange (1) fit into recesses in the top of the mounting gasket (2).
4. Attach two screws (5) through opposite holes in the flat gasket (4), support ring (3), mounting gasket (2) and into the threaded fasteners in the mounting flange (1). The screws (5) should be protruding approximately 1/4 inch below the flat gasket (4).
5. Position the disposer beneath the flat gasket (4) and engage the two protruding screws in the keyhole slots in the disposer body flange. Assemble the remaining screws (5) and turn the disposer into place for plumbing connections. Tighten all screws evenly to secure the unit.



This adaptor will fit a sink opening of:

**9" I.D. and 12 1/8" O.D.
with 11 1/8" bolt hole circle**

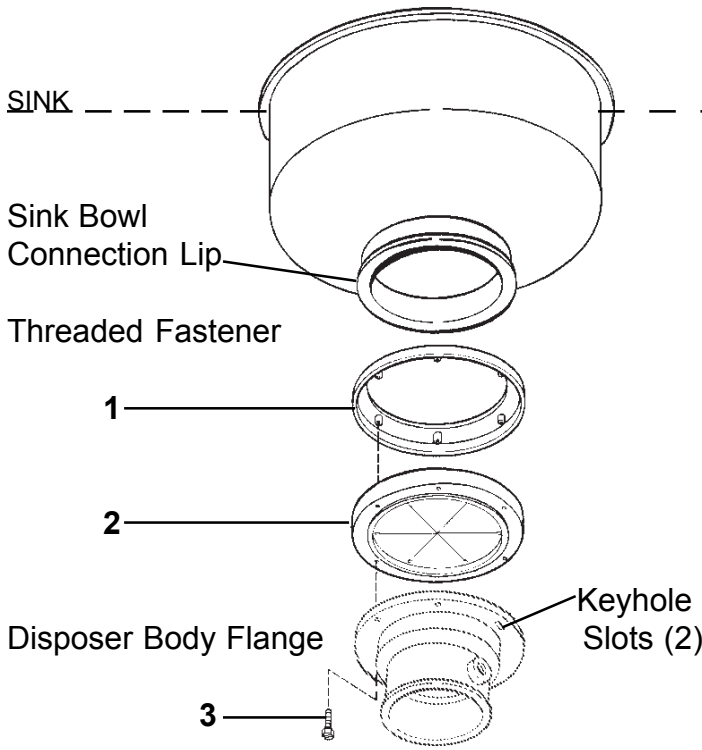
Part Numbers

I.D. No.	Part No.	Qty	Description
1	1491	8	Screw
2	11280-A	1	Flat Gasket
3	11278-B	1	Adaptor Flange
4	11444	8	Lock Washer
5	3136	8	Nut
6	11004	1	Mounting Flange
7	11016	1	Mounting Gasket
8	1491	6	Screw

Installation Instructions (Suggested Assembly Method)

1. Insert screws (1) through the sink bowl connection lip, flat gasket (2), and adaptor flange (3). With screws protruding through the adaptor flange (3), attach lock washers (4) and nuts (5). Tighten all screws evenly.
2. Place the mounting flange (6) over the adaptor flange connection lip (3). Push mounting flange (6) up out of the way and fit the mounting gasket (7) onto the lip of the adaptor flange (3)
3. Move mounting flange (6) down over mounting gasket (7). Be certain that the threaded fasteners in the mounting flange (6) fit into recesses in the top of the mounting gasket (7).
4. Attach two screws (8) through opposite holes in the mounting gasket (7), and into the threaded fasteners in the mounting flange (6). The screws (8) should be protruding approximately 1/4 inch below the mounting gasket (7).
5. Position the disposer beneath the mounting gasket (7) and engage the two protruding screws in the keyhole slots in the disposer body flange. Assemble the remaining screws (8) and turn the disposer into place for plumbing connections. Tighten all screws evenly to secure the unit.

This adaptor will fit a sink opening of:
7" I.D. and 7 3/8" O.D.



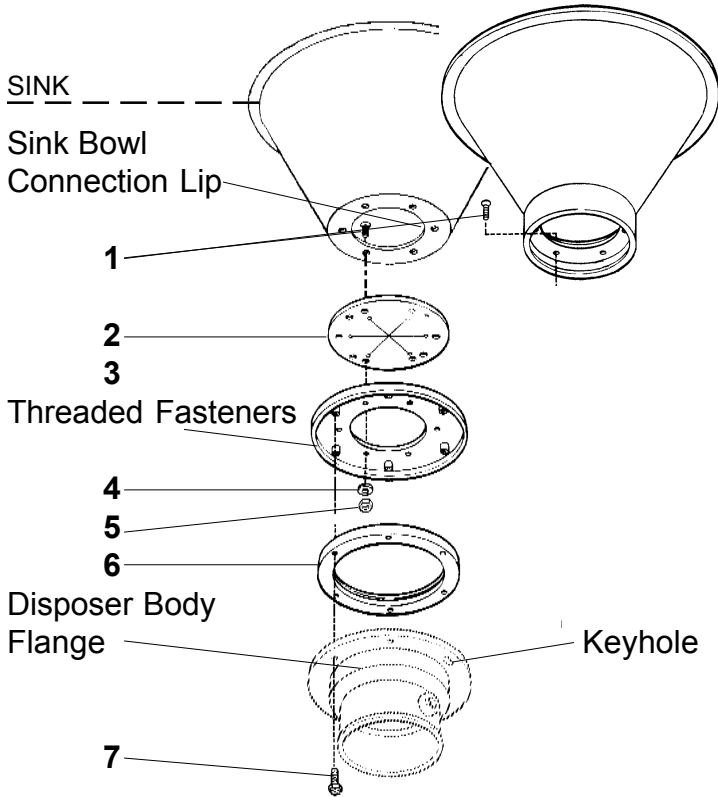
Part Numbers

I.D. No.	Part No.	Qty	Description
1	11004-C	1	Mounting Flange
2	11341	1	Mounting Gasket
3	1491	6	Screw

Installation Instructions (Suggested Assembly Method)

1. Place mounting flange (1) up over existing sink bowl connection lip. It may require a slight force fit.
2. Push mounting flange (1) up out of the way and fit inside groove of mounting gasket (2) onto the sink bowl connection lip.
3. Move mounting flange (1) down over the mounting gasket (2). Be certain that the threaded fasteners in the mounting flange (1) fit into the recesses in the top of the mounting gasket (2).
4. Attach two screws (3) through opposite holes in the mounting gasket (2) and into the threaded fasteners in the mounting flange (1). The screws (3) should be protruding approximately 1/4 inch below the mounting gasket (2)
5. Position the disposer beneath the mounting gasket (2) and engage the two protruding screws in the keyhole slots in the disposer body flange. Assemble the remaining screws (3) and turn the disposer into place for plumbing connections. Tighten all screws evenly to secure the unit.

MOUNTING ADAPTOR (# 11327-H)



This adaptor will fit a sink opening of:
4 1/2" I.D. and 6 7/8" O.D.
5 7/8" I.D. and 6 1/2" O.D.
5 7/8" I.D. and 6 7/8" O.D.
with 5 1/2" bolt hole circle

Part Numbers

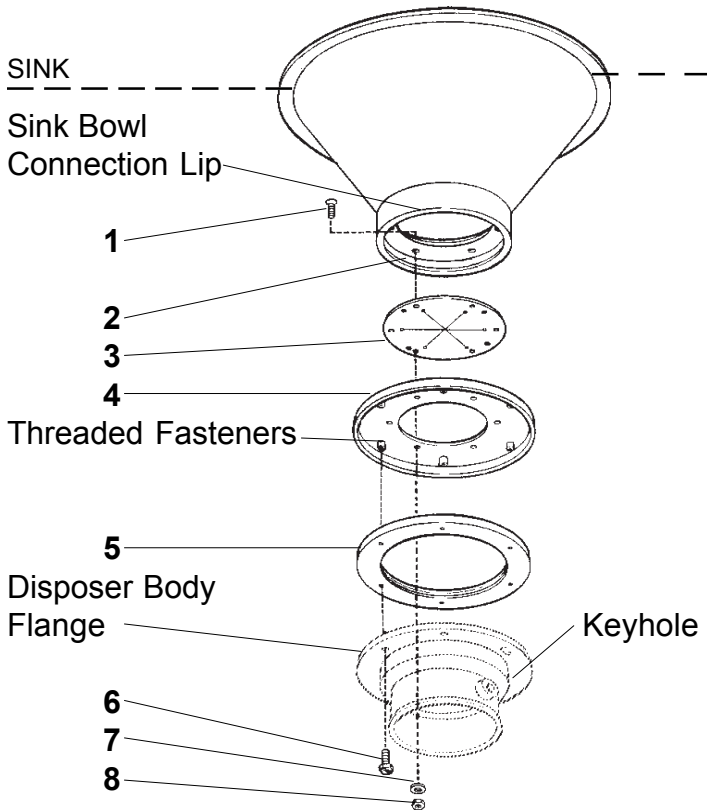
I.D. No.	Part No.	Qty	Description
1	11294	6	Screw
2	11292-C	1	Flat Gasket
3	11189-A	1	Mounting Flange
4	11180	6	Washer
5	11179	6	Nut
6	11016	1	Mounting Gasket
7	1491	6	Screw

Installation Instructions (Suggested Assembly Method)

1. Insert screws (1) through the sink bowl connection lip (or loose ring), flat gasket (2) and mounting flange (3). With screws protruding through the mounting flange (3) attach washers (4) and nuts (5). Tighten all screws evenly.
2. Position the disposer for plumbing hookup and check the location of the keyhole slots in the disposer body flange.
3. Attach two screws (7) through opposite holes in the mounting gasket (6) and into the threaded fasteners in the mounting flange (3). The screws (7) should be protruding approximately 1/4 inch below the mounting gasket (6).
4. Position the disposer beneath the mounting gasket (6) and engage the two protruding screws in the keyhole slots in the disposer body flange. Assemble the remaining screws (7). Tighten all screws evenly to secure the unit.

MOUNTING ADAPTOR (# 11327-J)

This adaptor will fit a sink opening of:
5" I.D. and 5 7/8" O.D.



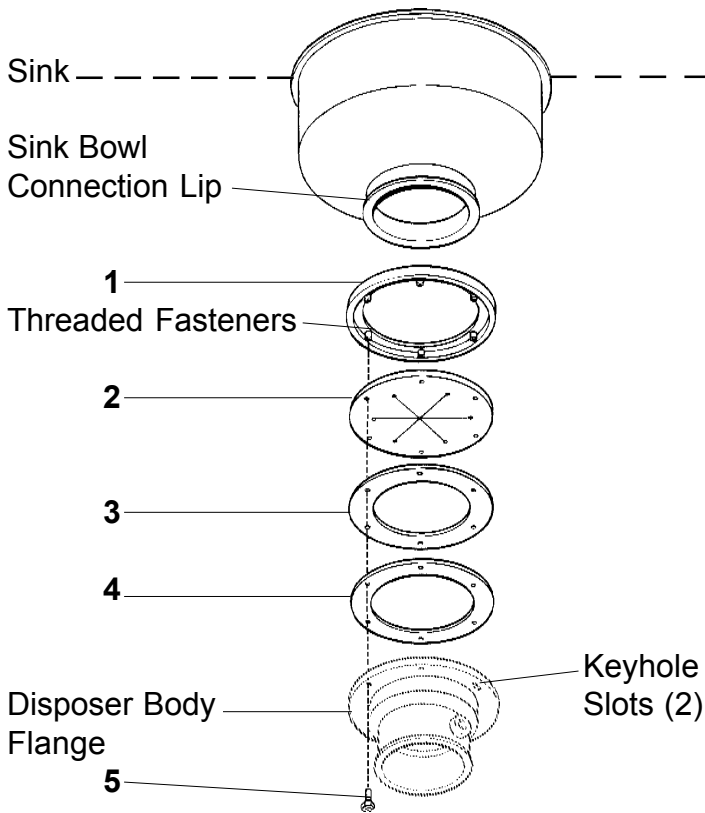
Part Numbers

I.D. No.	Part No.	Qty	Description
1	11294	6	Screw
2	11592	1	Clamping Ring
3	11292-B	1	Flat Gasket
4	11189-C	1	Mounting Flange
5	11016	1	Mounting Gasket
6	1491	6	Screw
7	11180	6	Washer
8	11179	6	Nut

Installation Instructions (Suggested Assembly Method)

1. Place the clamping ring (2) down through the opening so that it rests on the sink bowl connection lip. If the opening has a small ridge on the inside above the lip, a slight force fit may be necessary to push the ring down to the lip.
2. Insert screws (1) through the clamping ring (2), flat gasket (3) and mounting flange (4). With screws protruding through the mounting flange (4), attach washers (7) and nuts (8). Tighten all screws evenly.
3. Position the disposer for plumbing hookup and check the location of the keyhole slots in the disposer body flange.
4. Attach two screws (6) through opposite holes in the mounting gasket (5) and into the threaded fasteners in the mounting flange (4). The screws (6) should be protruding approximately 1/4 inch below the mounting gasket (5).
5. Position the disposer beneath the mounting gasket (5) and engage the two protruding screws in the keyhole slots in the disposer body flange. Assemble the remaining screws (6). Tighten all screws evenly to secure the unit.

This adaptor will fit a sink opening of:
6" I.D. and 6 7/8" O.D.



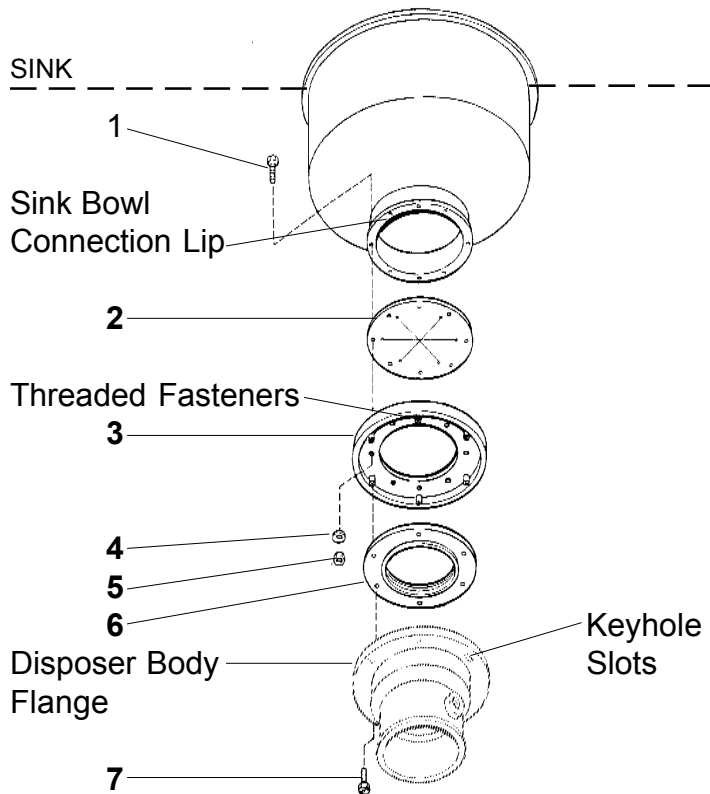
Part Numbers

I.D. No.	Part No.	Qty	Description
1	11004-E	1	Mounting Flange
2	11342	1	Mounting Gasket
3	11293-B	1	Metal Support Ring
4	11292	1	Flat Gasket
5	1491	6	Screw

Installation Instructions (Suggested Assembly Method)

1. Place adaptor mounting flange (1) up over existing sink bowl connection lip. It may require a slight force fit.
2. Push mounting flange (1) up out of the way and fit inside groove of mounting gasket (2) onto the sink bowl connection lip.
3. Move mounting flange (1) down over mounting gasket (2). Be certain that the threaded fasteners in the mounting flange (1) fit into recesses in the top of the mounting gasket (2).
4. Attach two screws (5) through opposite holes in the flat gasket (4), metal support ring (3), mounting gasket (2) and into the threaded fasteners in the mounting flange (1). The screws (5) should be protruding approximately 1/4 inch below the flat gasket (4).
5. Position the disposer beneath the flat gasket (4) and engage the two protruding screws in the keyhole slots in the disposer body flange. Assemble the remaining screws (5) and turn the disposer into place for plumbing connections. Tighten all screws evenly to secure the unit.

MOUNTING ADAPTOR (# 11599)



This adaptor will fit a sink opening of:

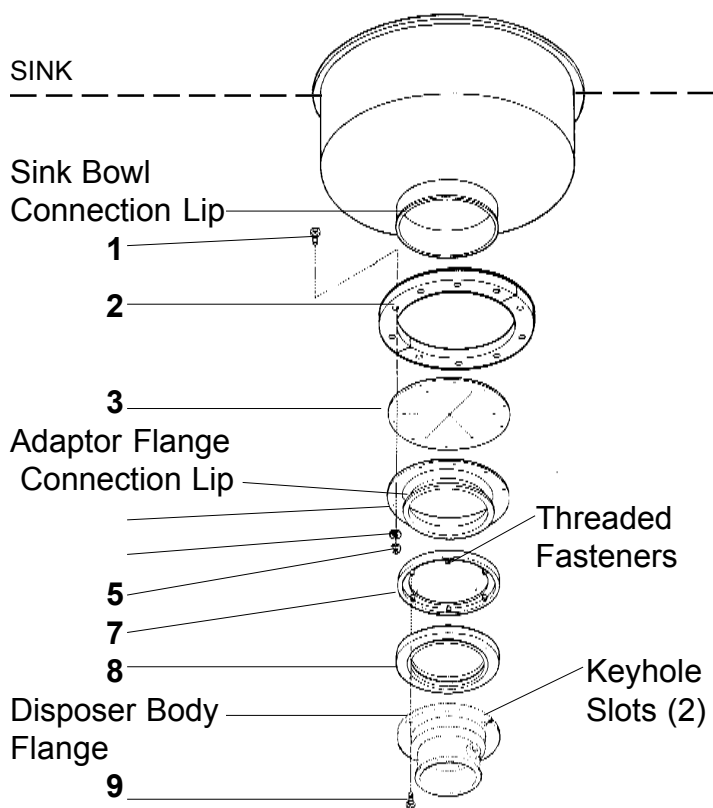
**4 1/2" I.D. and 6 1/2 O.D.
w/ 5 1/2" bolt hole circle**

Part Numbers

I.D. No.	Part No.	Qty	Description
1	1491	6	Screw
2	11292-C	1	Flat Gasket
3	11189-A	1	Mounting Flange
4	11180	6	Washer
5	11179	6	Nut
6	11016	1	Mounting Gasket
7	1491	6	Screw

Installation Instructions (Suggested Assembly Method)

1. Insert screws (1) through the holes of the sink bowl connection lip, flat gasket (2) and mounting flange (3). With screws protruding through the mounting flange (3), attach washers (4) and nuts (5). Tighten all screws evenly.
2. Position the disposer for plumbing hookup and check the location of the keyhole slots in the disposer body flange.
3. Attach two screws (7) through opposite holes in the mounting gasket (6) and into the threaded fasteners in the mounting flange (3). The screws (7) should be protruding approximately 1/4 inch below the mounting gasket (6).
4. Position the disposer beneath the mounting gasket (6) and engage the two protruding screws in the keyhole slots in the disposer body flange. Assemble the remaining screws (7). Tighten all screws evenly to secure the unit.



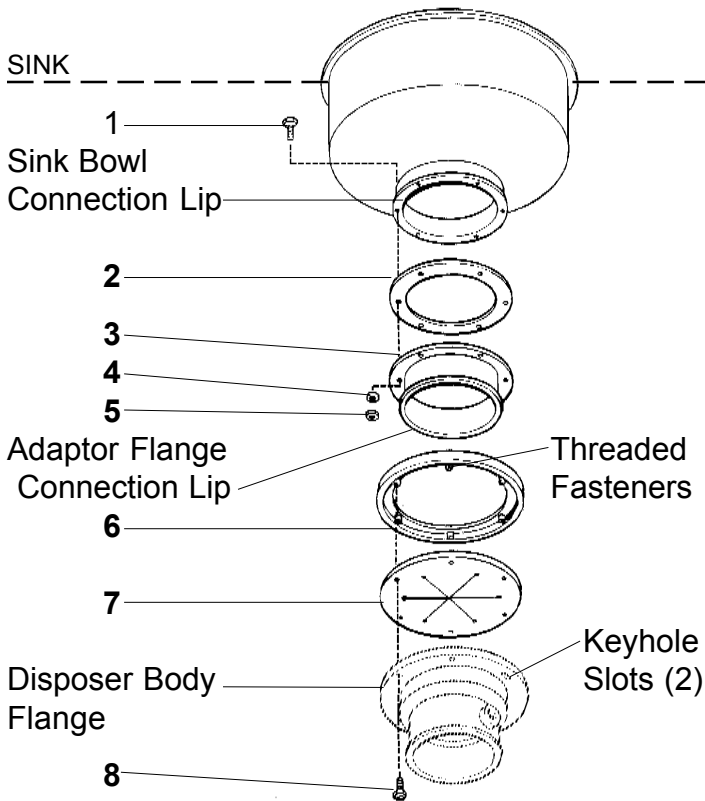
This adaptor will fit a sink opening of:
7" I.D. and 7 3/4" O.D.

Part Numbers

I.D. No.	Part No.	Qty	Description
1	1491	10	Screw
2	12613	1	Split Ring
3	12614	1	Flat Gasket
4	12664-A	1	Spacer Sleeve
5	11444	10	Lock Washer
6	11179	10	Nut
7	11004-C	1	Mounting Flange
8	11341	1	Mounting Gasket
9	1491	6	Screw

Installation Instructions (Suggested Assembly Method)

- Place the split ring (2) around the sink bowl connection neck (located just above the sink bowl connection lip). Insert screws (1) through the split ring (2), flat gasket (3), and spacer sleeve (4). With screws protruding through the spacer sleeve (4), attach lock washers (5) and nuts (6). Tighten all screws evenly.
- Place mounting flange (7) over the spacer sleeve connection lip (4). Push mounting flange (7) up out of the way and fit inside groove of the mounting gasket (8) onto the spacer sleeve connection lip (4).
- Move mounting flange (7) down over mounting gasket (8). Be certain that the threaded fasteners in the mounting flange (7) fit into recesses in the top of the mounting gasket (8).
- Attach two screws (9) through opposite holes in the mounting gasket (8), and into the threaded fasteners in the mounting flange (7). The screws (9) should be protruding approximately 1/4 inch below the mounting gasket (8).
- Position the disposer beneath the mounting gasket (8) and engage the two protruding screws in the keyhole slots in the disposer body flange. Assemble the remaining screws (9) and turn the disposer into place for plumbing connections. Tighten all screws evenly to secure the unit.



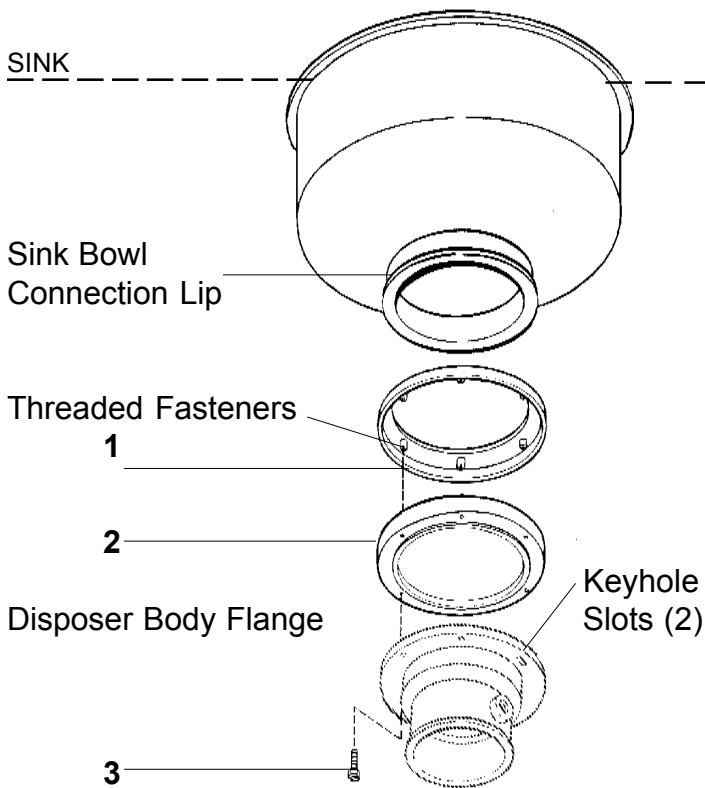
This adaptor will fit a sink opening of:
7" I.D. and 8 1/2 " O.D.
with 8 1/16" bolt hole circle
(10 bolts)

Part Numbers

I.D. No.	Part No.	Qty	Description
1	1468	10	Screw
2	12614	1	Flat Gasket
3	12664-A	1	Adapter Flange
4	11444	10	Washer
5	11179	10	Nut
6	11004-C	1	Mounting Flange
7	11341	1	Mounting Gasket
8	1491	6	Screw

Installation Instructions (Suggested Assembly Method)

- Place flat gasket (2) on the sink bowl connection lip. Insert screws (1) through the sink bowl connection lip, flat gasket (2), and adaptor flange (3). With screws protruding through the adaptor flange (3), attach washers (4) and nuts (5). Tighten all screws evenly.
- Place mounting flange (6) over adaptor flange connection lip (3). Push mounting flange (6) up out of the way and fit inside groove of mounting gasket (7) onto the adaptor flange connection lip (3).
- Move mounting flange (6) down over mounting gasket (7). Be certain that the threaded fasteners in the mounting flange (6) fit into recesses in the top of the mounting gasket (7).
- Attach two screws (8) through opposite holes in the mounting gasket (7), and into the threaded fasteners in the mounting flange (6). The screws (8) should be protruding approximately 1/4 inch below the mounting gasket (7).
- Position the disposer beneath the mounting gasket (7) and engage the two protruding screws in the keyhole slots in the disposer body flange. Assemble the remaining screws (8) and turn the disposer into place for plumbing connections. Tighten all screws evenly to secure the unit.



This adaptor will fit a sink opening of:
6 5/8" I.D. and 7 1/8" O.D.

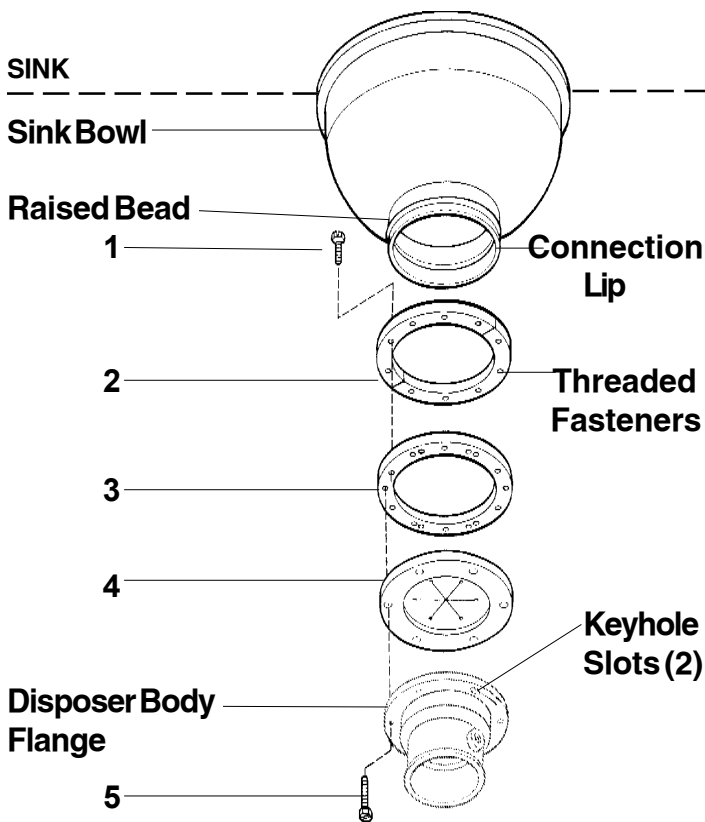
Part Numbers

I.D. No.	Part No.	Qty	Description
1	11004	1	Mounting Flange
2	11016	1	Mounting Gasket
3	1491	6	Screw

Installation Instructions (Suggested Assembly Method)

1. Place mounting flange (1) up over existing collar adaptor connection lip. It may require a slight force fit.
2. Push mounting flange (1) up out of the way and fit mounting gasket (2) onto the sink bowl connection lip.
3. Move mounting flange (1) down over the mounting gasket (2). Be certain that the threaded fasteners in the mounting flange (1) fit into recesses in the top of the mounting gasket (2).
4. Attach two screws (3) through opposite holes in the mounting gasket (2) and into the threaded fasteners in the mounting flange (1). The screws (3) should be protruding about 1/4 inch below the gasket (2).
5. Position the disposer beneath the mounting gasket (1) and engage the two protruding screws in the keyhole slots in the disposer body flange. Assemble the remaining screws (2) and turn the disposer into place for plumbing connections. Tighten all screws evenly to secure the unit.

MOUNTING ADAPTOR (# 11599-H)



This adaptor will fit a sink opening of:
6 5/8" I.D. and NO flange with raised bead in the straight neck

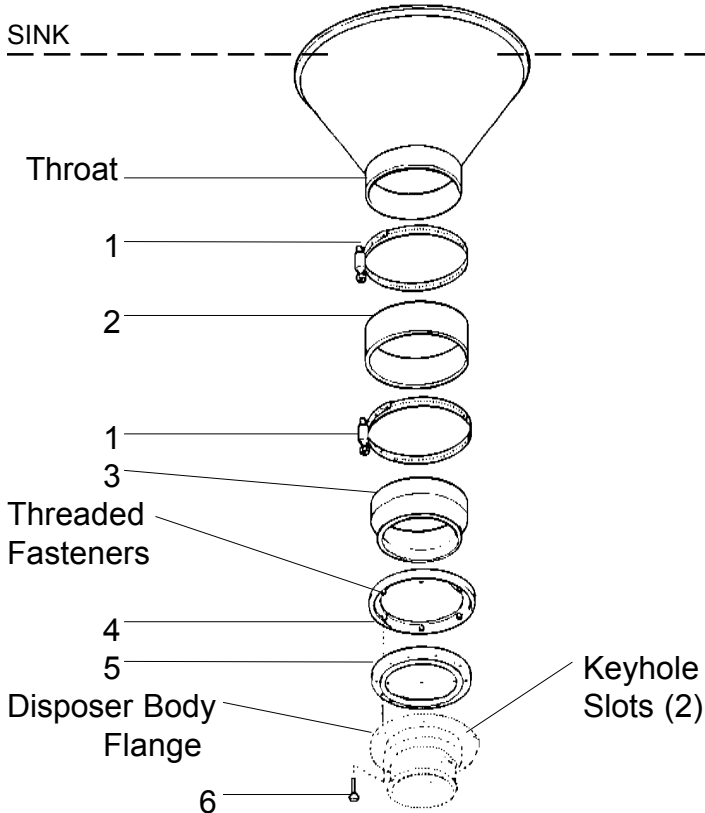
Part Numbers

I.D. No.	Part No.	Qty	Description
1	1468	10	Screw
2	12681	1	Split Ring
3	11306-D	1	Mounting Flange
4	11341	1	Mounting Gasket
5	3135	6	Screw

Installation Instructions (Suggested Assembly Method) - *SUPPORT LEGS ARE REQUIRED*

1. Place the split ring (2) over and above sink bowl raised bead.
2. Place mounting flange (3) over the sink bowl connection neck. Attach screws (1) through the split ring (2) and into the threaded holes in the mounting flange (3). Tighten screws evenly.
3. Attach two screws (5) through opposite holes in the mounting gasket (4), and into the threaded holes in the mounting flange (3). The screws (5) should be protruding approximately 1/4 inch below the mounting gasket (4).
4. Position the disposer beneath the mounting gasket (4) and engage the two protruding screws in the keyhole slots in the disposer body flange. Assemble the remaining screws (5) and turn the disposer into place for plumbing connections. Tighten all screws evenly to secure the unit.
5. Extend the adjustable legs of the disposer to provide support from the floor.
 NOTE: ***Disposers from 3H.P. through 10H.P. have factory assembled legs. Disposers from 1/2H.P. through 2H.P. require two accessory legs.***

MOUNTING ADAPTOR (# 11599-K)



This adaptor will fit a sink opening of:
8" I.D. and NO Flange

Part Numbers

I.D. No.	Part No.	Qty	Description
1	13119	2	Clamping Band
2	13120-A	1	Rubber Sleeve
3	13118	1	Sleeve Adaptor
4	11004-C	1	Mounting Flange
5	11341	1	Mounting Gasket
6	1491	6	Screw

Installation Instructions (Suggested Assembly Method) - *SUPPORT LEGS ARE REQUIRED.*

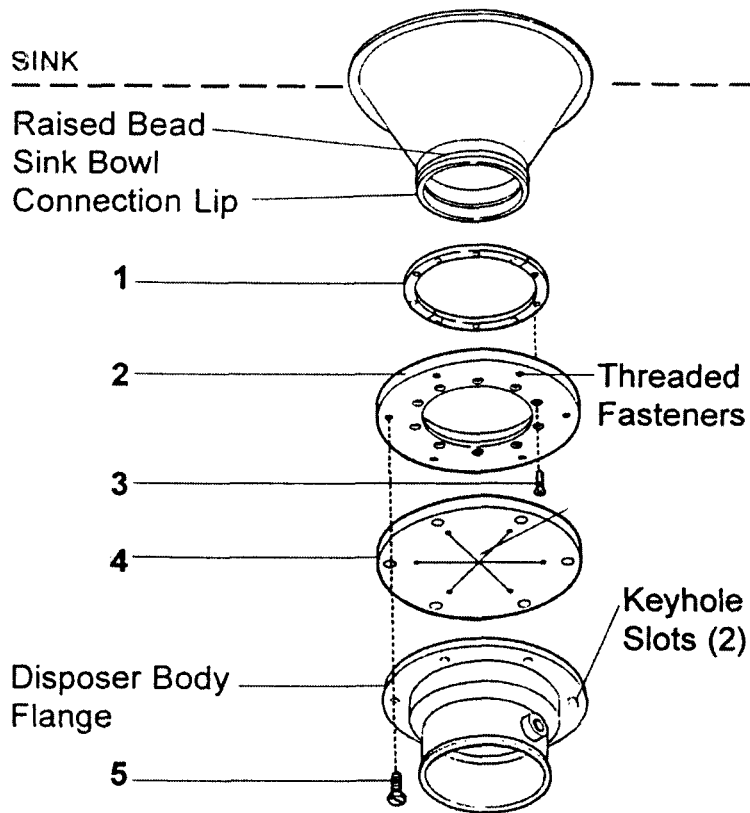
- Assemble the rubber sleeve (2) to the throat of the sink bowl with one of the clamping bands (1).
- Insert the lip of the sleeve adaptor (3) through the mounting flange (4) and into the groove of the mounting gasket (5).
- Place the sleeve adaptor (3), mounting gasket (5) and mounting flange assembly on the top of the disposer body flange. Be certain that the threaded fasteners in the mounting flange (4) fit into the recesses in the top of the mounting gasket (5).
- Fasten screws (6) through holes in disposer body flange, mounting gasket (5) and into the threaded fasteners in the mounting flange (4). Tighten screws evenly.
- Position the disposer under the rubber sleeve (3). Extend the adjustable legs of the disposer to provide support from the floor.
NOTE: *Disposers from 3 H.P. through 10 H.P. have factory assembled legs. Disposers from 1/2 H.P. through 2 H.P. require two accessory legs.*
- Turn the disposer into position for plumbing connections. Slide the sleeve adaptor (3) into the bottom of the rubber sleeve (2) and tighten with the other clamping band (1). Adjust the support legs for final positioning.



MOUNTING ADAPTOR (# 11599-N)



This adaptor will fit a sink opening of:
4 7/16" I.D. and NO flange with
raised bead in the straight neck



Part Numbers

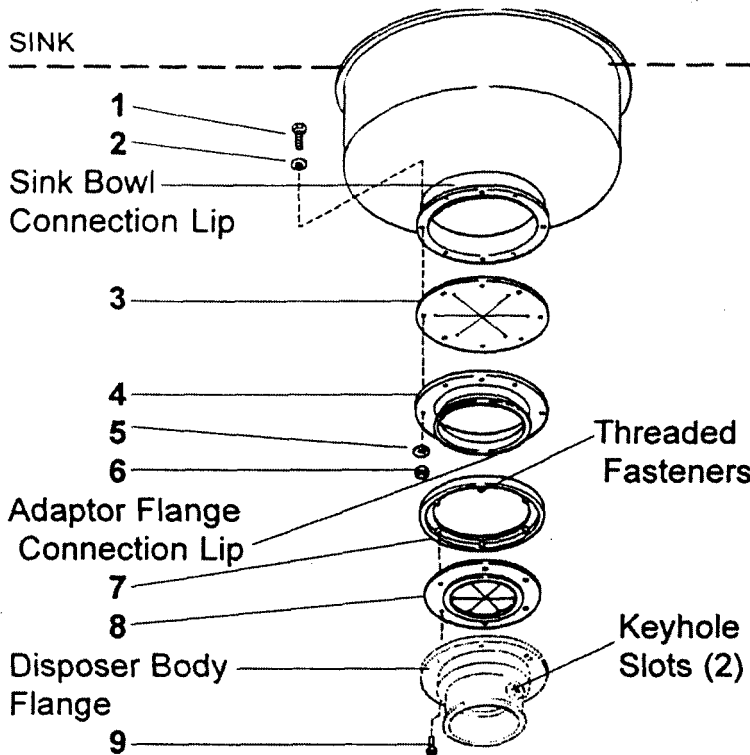
I.D. No.	Part No.	Qty	Description
1	13242-B	1	Split Ring
2	11306-E	1	Mounting Flange
3	11184	6	Screw
4	11342-A	1	Mounting Gasket
5	3135	6	Screw

installation Instructions (Suggested Assembly Method) - SUPPORT LEGS ARE REQUIRED

1. Place the split ring (1) over and above sink bowl raised bead.
2. Place mounting flange (2) over the sink bowl connection neck. Attach screws (3) through the mounting flange (2) and into the threaded holes in the split ring (1). Tighten screws evenly.
3. Attach two screws (5) through opposite holes in the mounting gasket (4), and into the threaded holes in the mounting flange (2). The screws (5) should be protruding approximately 1/4 inch below the mounting gasket (4).
4. Position the disposer beneath the mounting gasket (4) and engage the two protruding screws in the keyhole slots in the disposer body flange. Assemble the remaining screws (5) and turn the disposer into place for plumbing connections. Tighten all screws evenly to secure the unit.

5. Extend the adjustable legs of the disposer to provide support from the floor.
NOTE: Disposers from 3 H.P. through 10 H. P. have factory assembled legs.
 Disposers from 1/2 H.P. through 2 H.P. require two accessory legs.

**This adaptor will fit a sink opening of:
6" I.D. and 8 3/4" O.D.
with 8-1/6" bolt hole circle (6 bolts)**



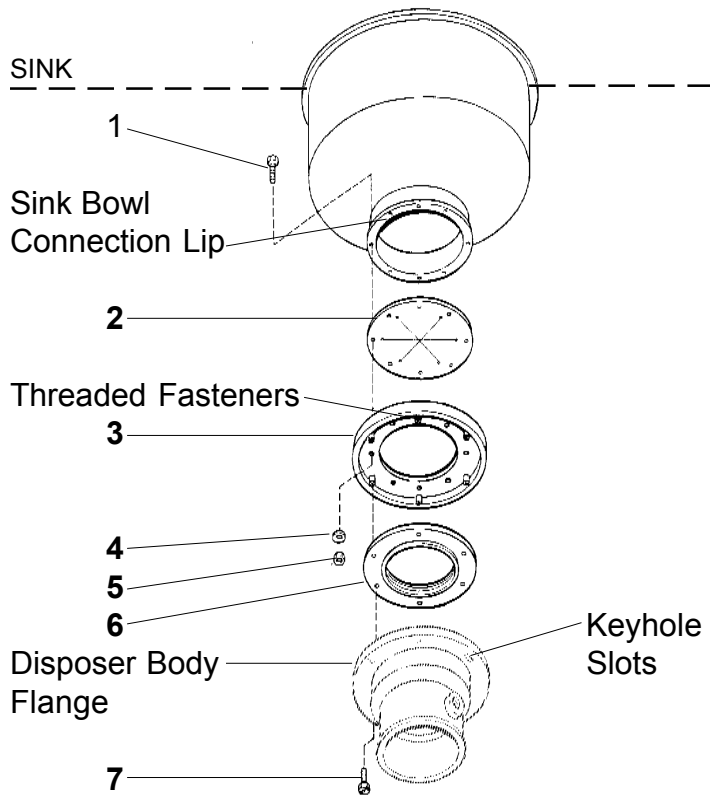
Part Numbers

I.D. No.	Part No.	Qty	Description
1	1468	6	Screw
2	11180	6	Washer
3	11292	1	Flat Gasket
4	12664-B	1	Adapter Flange
5	11180	6	Washer
6	3136	6	Nut
7	11004-C	1	Mounting Flange
8	11341	1	Mounting Gasket
9	1491	6	Screw

Installation Instructions (Suggested Assembly Method)

- Place flat gasket (2) on the sink bowl connection lip. Insert screws (1) through washer (2), sink bowl connection lip, flat gasket (3), and adaptor flange (4). With screws protruding through the adaptor flange (4), attach washers (5) and nuts (6). Tighten all screws evenly.
- Place mounting flange (7) over adaptor flange connection lip (4). Push mounting flange (6) up out of the way and fit inside groove of mounting gasket (8) onto the adaptor flange connection lip (4).
- Move mounting flange (7) down over mounting gasket (8). Be certain that the threaded fasteners in the mounting flange (7) fit into recesses in the top of the mounting gasket (8).
- Attach two screws (9) through opposite holes in the mounting gasket (8), and into the threaded fasteners in the mounting flange (7). The screws (9) should be protruding approximately 1/4 inch below the mounting gasket (8).
- Position the disposer beneath the mounting gasket (8) and engage the two protruding screws in the keyhole slots in the disposer body flange. Assemble the remaining screws (9) and turn the disposer into place for plumbing connections. Tighten all screws evenly to secure the unit.

MOUNTING ADAPTOR (# 11599-S)



This adaptor will fit a sink opening of:
4 3/4" I.D. and 6 1/2 O.D.
w/ 5 1/2" bolt hole circle

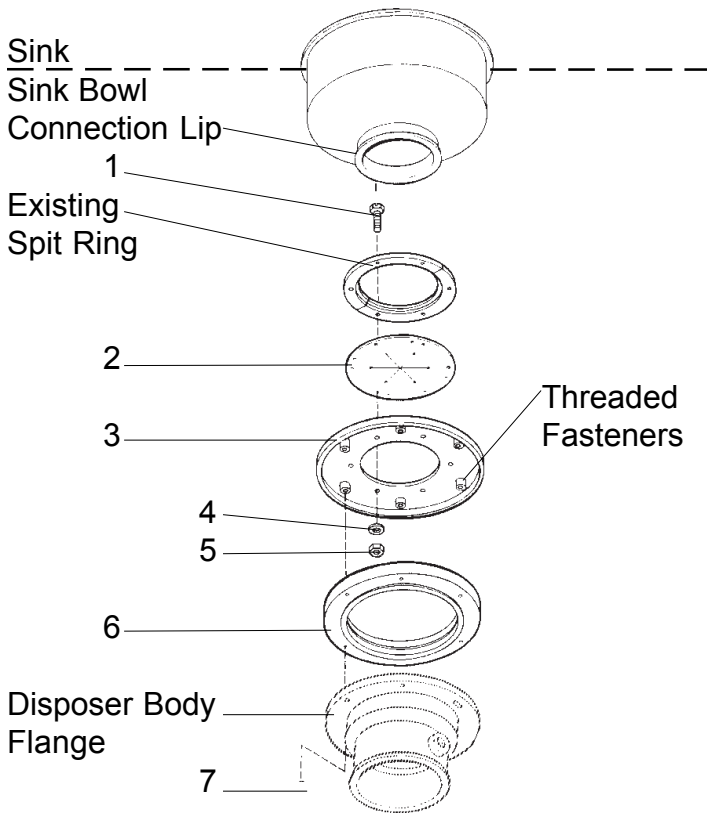
Part Numbers

I.D. No.	Part No.	Qty	Description
1	1468	4	Screw
2	11292-H	1	Flat Gasket
3	11189-S	1	Mounting Flange
4	11180	4	Washer
5	11179	4	Nut
6	11016	1	Mounting Gasket
7	1491	6	Screw

Installation Instructions (Suggested Assembly Method)

1. Insert screws (1) through the holes of the sink bowl connection lip, flat gasket (2) and mounting flange (3). With screws protruding through the mounting flange (3), attach washers (4) and nuts (5). Tighten all screws evenly.
2. Position the disposer for plumbing hookup and check the location of the keyhole slots in the disposer body flange.
3. Attach two screws (7) through opposite holes in the mounting gasket (6) and into the threaded fasteners in the mounting flange (3). The screws (7) should be protruding approximately 1/4 inch below the mounting gasket (6).
4. Position the disposer beneath the mounting gasket (6) and engage the two protruding screws in the keyhole slots in the disposer body flange. Assemble the remaining screws (7). Tighten all screws evenly to secure the unit.

MOUNTING ADAPTOR (# 11378)



This adaptor will fit a sink opening of:
4 5/8" I.D. and 5 1/8" O.D.
(re-use split ring)

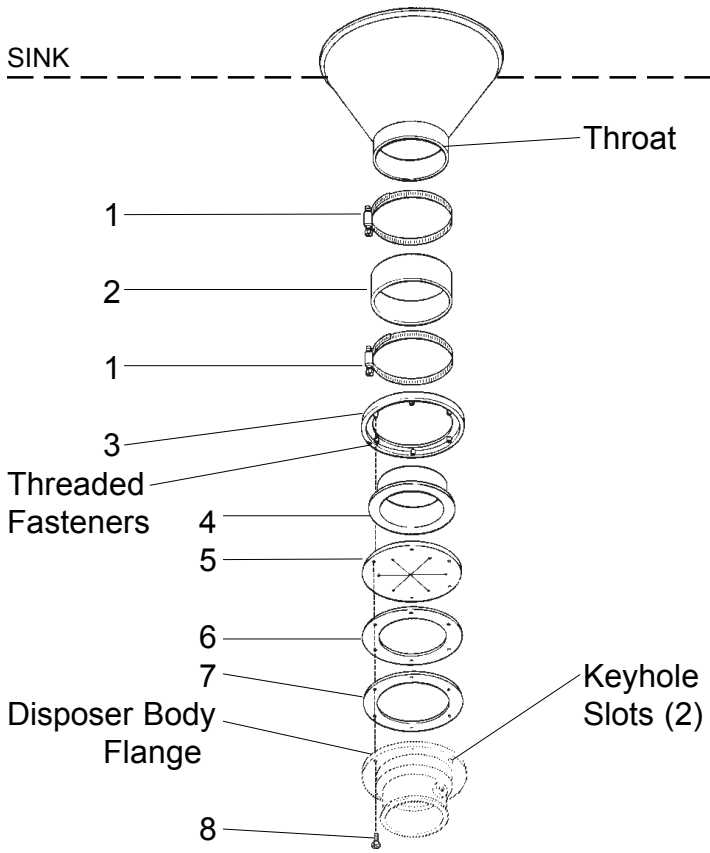
Part Numbers

I.D. No.	Part No.	Qty	Description
1	1491	6	Screw
2	11292-D	1	Flat Gasket
3	11189-B	1	Mounting Flange
4	11444	6	Lock Washer
5	3136	6	Nut
6	11016	1	Mounting Gasket
7	1491	6	Screw

Installation Instructions (Suggested Assembly Method)

- Place the existing split ring around the sink bowl connection neck (located just above the sink bowl connection lip). Insert screws (1) through the existing split ring, flat gasket (2), and mounting flange (3). With screws protruding through the mounting flange (3), attach lock washers (4) and nuts (5). Tighten all screws evenly.
- Attach two screws (7) through opposite holes in the mounting gasket (6), and into the threaded fasteners in the mounting flange (3). The screws (7) should be protruding approximately 1/4 inch below the mounting gasket (6).
- Position the disposer beneath the mounting gasket (6) and engage the two protruding screws in the keyhole slots in the disposer body flange. Assemble the remaining screws (7) and turn the disposer into place for plumbing connections. Tighten all screws evenly to secure the unit.

MOUNTING ADAPTOR (# 11378-A)



This adaptor will fit a sink opening of:
6 " I.D. and No Flange

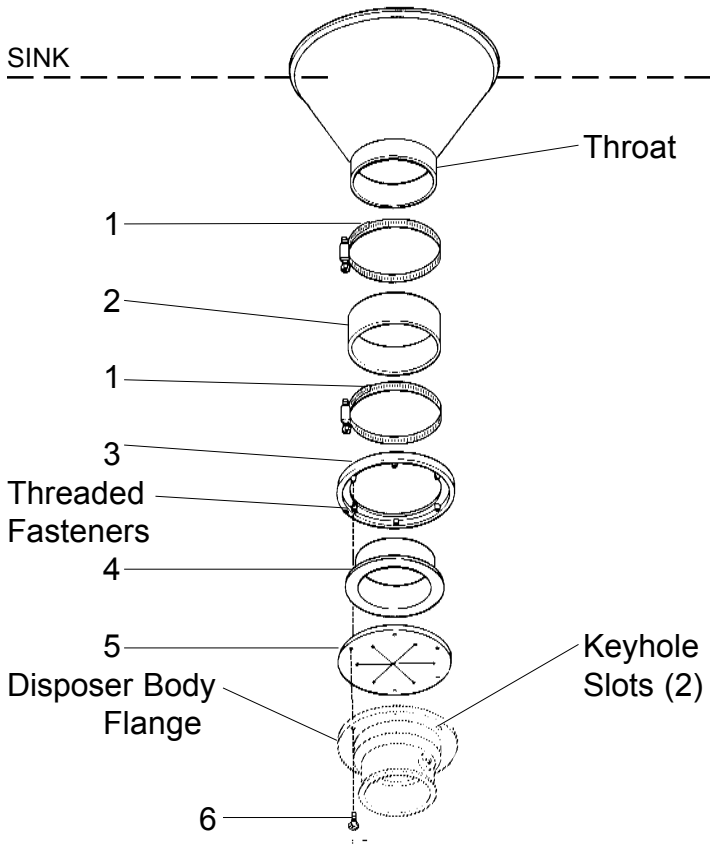
Part Numbers

I.D. No.	Part No.	Qty	Description
1	13119-B	2	Clamping Band
2	13120-C	1	Rubber Sleeve
3	11004	1	Mounting Flange
4	11308	1	Spacer Sleeve
5	11342	1	Mounting Gasket
6	11293-B	1	Support Ring
7	11292	1	Flat Gasket
8	1491	6	Screw

Installation Instructions (Suggested Assembly Method) - *SUPPORT LEGS ARE REQUIRED.*

1. Assemble the rubber sleeve (2) to the throat of the sink bowl with one of the clamping bands (1).
2. Insert the flange of the spacer sleeve (4) into the groove of the mounting gasket (5).
3. Place flat gasket (7), support ring (6), spacer sleeve mounting gasket assembly on top of the disposer body flange. Slide the mounting flange (3) over the spacer sleeve (4) and onto the mounting gasket (5). Be certain that the threaded fasteners in the mounting flange (3) fit into the recesses in the top of the mounting gasket (5).
4. Fasten screws (8) through holes in disposer body flange, flat gasket (7), support ring (6) mounting gasket (5) and into the threaded fasteners in the mounting flange (3). Tighten screws evenly.
5. Position the disposer under the rubber sleeve (2). Extend the adjustable legs of the disposer to provide support from the floor.
NOTE: *Disposers from 3 H.P. through 10 H.P. have factory assembled legs.
Disposers from 1/2 H.P. through 2 H.P. require two accessory legs.*
6. Turn the disposer into position for plumbing connections. Slide the spacer sleeve (4) into the bottom of the rubber sleeve (2) and tighten with the other clamping band (1). Adjust the support legs for final positioning.

MOUNTING ADAPTOR (# 11378-B)



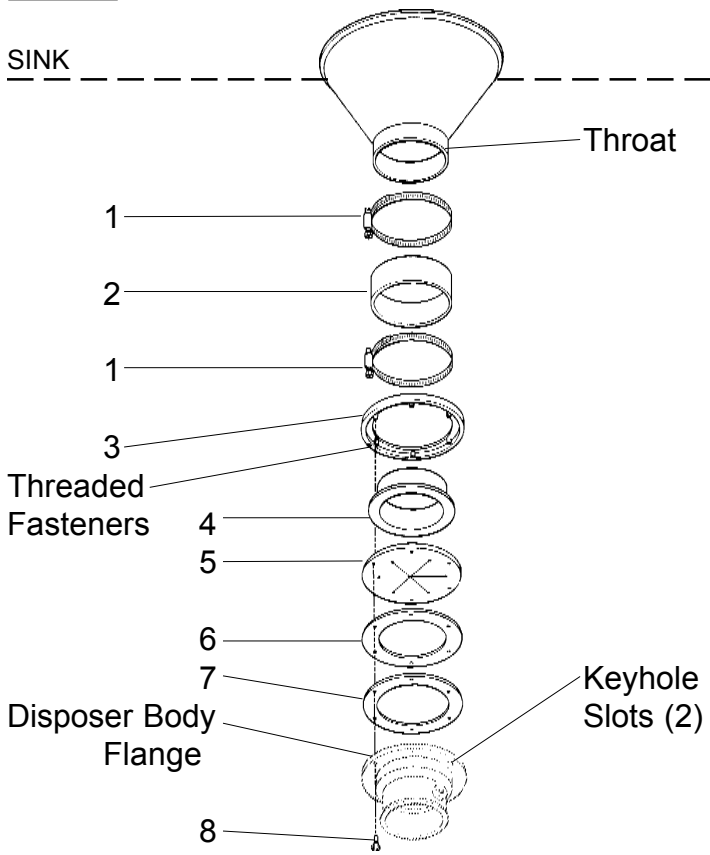
This adaptor will fit a sink opening of:
7 " I.D. and NO Flange

Part Numbers

I.D. No.	Part No.	Qty	Description
1	13119-A	2	Clamping Band
2	13120-B	1	Rubber Sleeve
3	11004-C	1	Mounting Flange
4	11562	1	Spacer Sleeve
5	11341	1	Mounting Gasket
6	1491	6	Screw

Installation Instructions (Suggested Assembly Method) - *SUPPORT LEGS ARE REQUIRED.*

1. Assemble the rubber sleeve (2) to the throat of the sink bowl with one of the clamping bands (1).
2. Insert the flange of the spacer sleeve (4) into the groove of the mounting gasket (5).
3. Place the spacer sleeve (4) and mounting gasket assembly on the top of the disposer body flange. Slide the mounting flange (3) over the spacer sleeve (4) and onto the mounting gasket (5). Be certain that the threaded fasteners in the mounting flange (3) fit into the recesses in the top of the mounting gasket (5).
4. Fasten screws (6) through holes in disposer body flange, mounting gasket (5) and into the threaded fasteners in the mounting flange (3). Tighten screws evenly.
5. Position the disposer under the rubber sleeve (2). Extend the adjustable legs of the disposer to provide support from the floor.
NOTE: *Disposers from 3 H.P. through 10 H.P. have factory assembled legs. Disposers from 1/2 H.P. through 2 H.P. require two accessory legs.*
6. Turn the disposer into position for plumbing connections. Slide the spacer sleeve (4) into the bottom of the rubber sleeve (2) and tighten with the other clamping band (1). Adjust the support legs for final positioning.



This adaptor will fit a sink opening of:
4 1/2 " I.D. and NO FLANGE

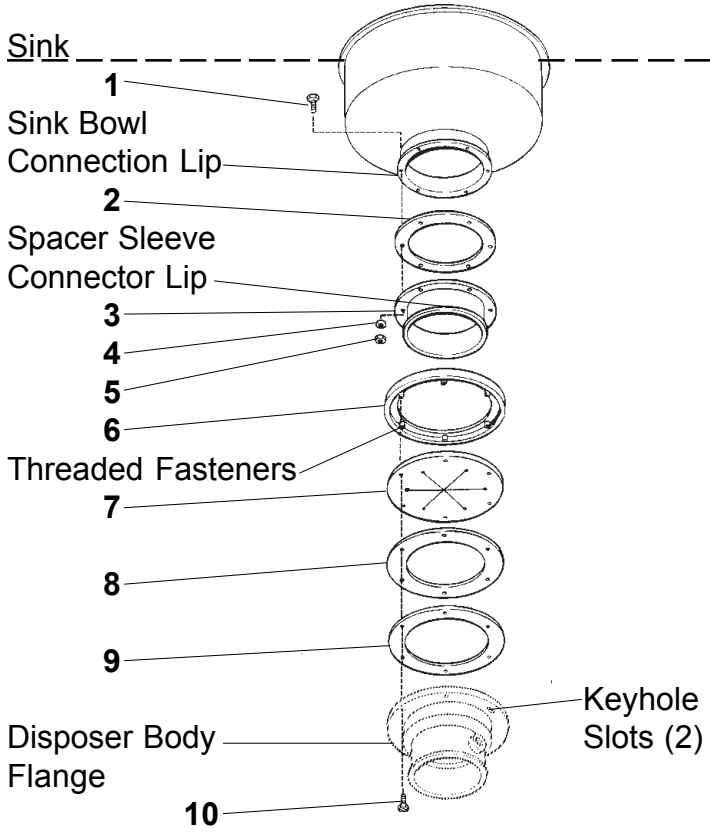
Part Numbers

I.D. No.	Part No.	Qty	Description
1	13119-C	2	Clamping Band
2	13120-D	1	Rubber Sleeve
3	11004-A	1	Mounting Flange
4	11563	1	Spacer Sleeve
5	11342-A	1	Mounting Gasket
6	11293	1	Support Ring
7	11292	1	Flat Gasket
8	1491	6	Screw

Installation Instructions (Suggested Assembly Method) - SUPPORT LEGS ARE REQUIRED

- Assemble the rubber sleeve (2) to the throat of the sink bowl with one of the clamping bands (1).
- Insert the flange of the spacer sleeve (4) into the groove of the mounting gasket (5).
- Place flat gasket (7), support ring (6), spacer sleeve / mounting gasket assembly on top of the disposer body flange. Slide the mounting flange (3) over the spacer sleeve (4) and onto the mounting gasket (5). Be certain that the threaded fasteners in the mounting flange (3) fit into the recesses in the top of the mounting gasket (5).
- Fasten screws (8) through holes in disposer body flange, flat gasket (7), support ring (6), mounting gasket (5) and into the threaded fasteners in the mounting flange (3). Tighten screws evenly.
- Position the disposer under the rubber sleeve (2). Extend the adjustable legs of the disposer to provide support from the floor.
NOTE: Disposers from 3 H.P. through 10 H.P. have factory assembled legs.
 Disposers from 1/2 H.P. through 2 H.P. require two accessory legs.
- Turn the disposer into position for plumbing connections. Slide the spacer sleeve (4) into the bottom of the rubber sleeve (2) and tighten with the other clamping band (1). Adjust the support legs for final positioning.

MOUNTING ADAPTOR (# 11378-D)



This adaptor will fit a sink opening of:
6" I.D. and 7 1/2" O.D.
with 6 7/8" bolt hole circle

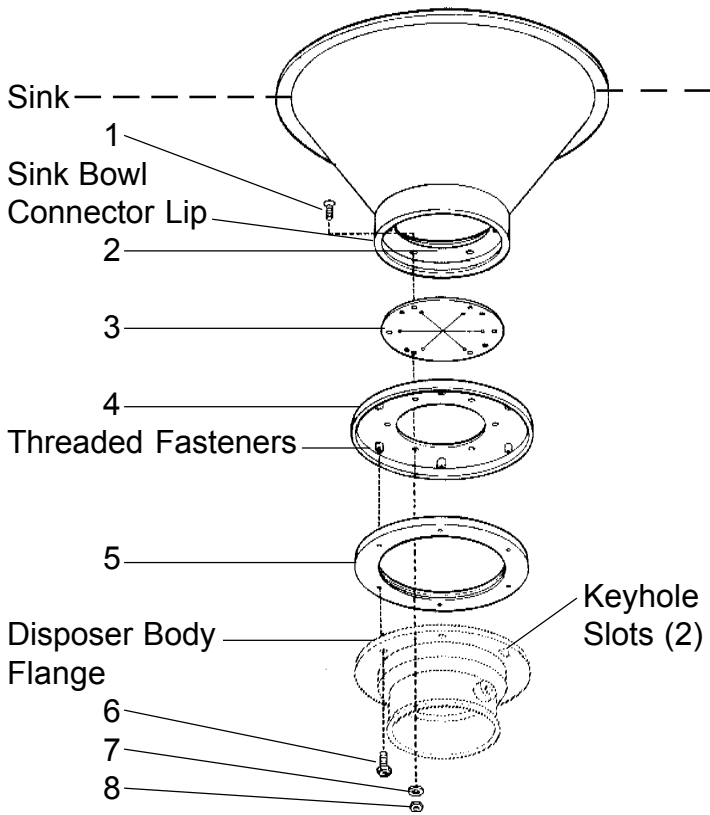
Part Numbers

I.D. No.	Part No.	Qty	Description
1	1491	6	screw
2	11305-G	1	Flat Gasket
3	11001-A	1	Spacer Sleeve
4	11444	6	Washer
5	3136	6	Nut
6	11004	1	Mounting Flange
7	11342	1	Mounting Gasket
8	11293-B	1	Support Ring
9	11292	1	Flat Gasket
10	1491	6	screw

Installation Instructions (Suggested Assembly Method)

1. Insert screws (1) through the sink bowl connection lip, flat gasket (2), and spacer sleeve (3). With screws protruding through the spacer sleeve (3), attach washers (4) and nuts (5). Tighten all screws evenly.
2. Place mounting flange (6) over the spacer sleeve connection lip (3). Push mounting flange (6) up out of the way and fit inside groove of mounting gasket (7) onto the spacer sleeve connection lip (3).
3. Move mounting flange (6) down over mounting gasket (7). Be certain that the threaded fasteners in the mounting flange (6) fit into the recesses in the top of the mounting gasket (7).
4. Attach two screws (10) through opposite holes in the bottom of the flat gasket (9), support ring (8), mounting gasket (7), and into the threaded fasteners in the mounting flange (6). The screws (10) should be protruding approximately 1/4 inch below the mounting gasket (7).
5. Position the disposer beneath the flat gasket (9) and engage the two protruding screws in the keyhole slots in the disposer body flange. Assemble the remaining screws (10) and turn the disposer into place for plumbing connections. Tighten all screws evenly to secure the unit.

This adaptor will fit a sink opening of:
6" I.D. and 6 3/8" O.D.

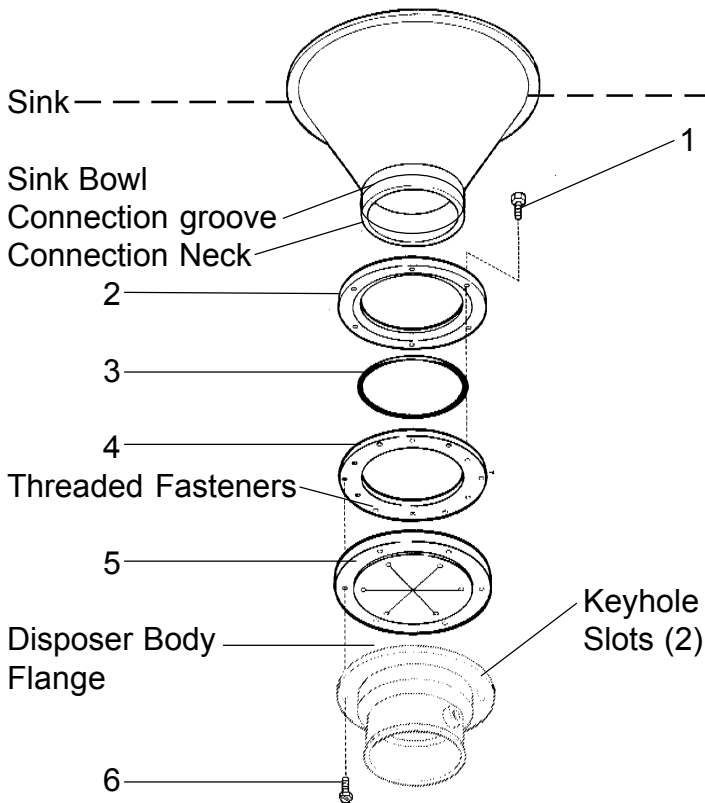


Part Numbers

I.D. No.	Part No.	Qty	Description
1	11294	6	Screw
2	11598	1	Clamping Ring
3	11292-E	1	Flat Gasket
4	11189-D	1	Mounting Flange
5	11016	1	Mounting Gasket
6	1491	6	Screw
7	11180	6	Washer
8	11179	6	Nut

Installation Instructions (Suggested Assembly Method)

- Place the clamping ring (2) down through the opening so that it rests on the sink bowl connection lip.
- Insert screws (1) through the clamping ring (2), flat gasket (3) and mounting flange (4). With screws protruding through the mounting flange (4), attach the washers (7) and nuts (8). Tighten all screws evenly.
- Position the disposer for plumbing hookup and check the location of the keyhole slots in the disposer body flange.
- Attach two screws (6) through opposite holes in the mounting gasket (5) and into the threaded fasteners in the mounting flange (4). The screws (6) should be protruding approximately 1/4 inch below the mounting gasket (5).
- Position the disposer beneath the mounting gasket (5) and engage the two protruding screws in the keyhole slots in the disposer body flange. Assemble the remaining screws (6). Tighten all screws evenly to secure the unit.



This adaptor will fit a sink opening of:
6 3/8" I.D. and NO FLANGE
with snap ring groove
in the straight neck

Part Numbers

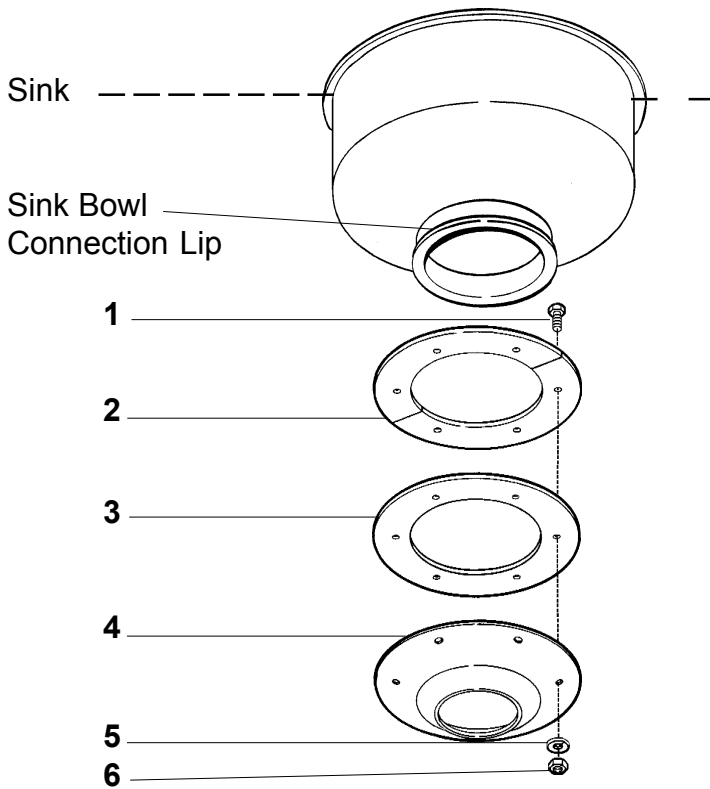
I.D. No.	Part No.	Qty	Description
1	1491	10	Screw
2	13255	1	Clamping Flange
3	13254	1	O-Ring
4	12844-B	1	Mounting Flange
5	11341	1	Mounting Gasket
6	3135	6	Screw

Installation Instructions (Suggested Assembly Method) - SUPPORT LEGS ARE REQUIRED

- Place clamping flange (2) over and above sink bowl connection groove.
- Place o-ring (3) into sink bowl connection groove.
- Place mounting flange (4) over sink bowl connection neck. Attach screws (1) through the clamping flange (2) and into the threaded holes in the mounting flange (4). Tighten screws evenly.
- Attach two screws (6) through opposite holes in the mounting gasket (5) and into the threaded fasteners in the mounting flange (4). The screws (6) should be protruding approximately 1/4 inch below the mounting gasket (5).
- Position the disposer beneath the mounting gasket (5) and engage the two protruding screws in the keyhole slots in the disposer body. Assemble the remaining screws (6) and turn the disposer into place for plumbing connections. Tighten all screws evenly to secure the unit.
- Extend the adjustable legs of the disposer to provide support from the floor.
NOTE: Disposers from 3 hp through 10 hp have factory assembled legs.
 Disposers from 1/2 hp through 2 hp require two accessory legs.

MOUNTING ADAPTOR (# 12904)

This adaptor will fit a sink opening of:
6 5/8" I.D. and 7 1/8" O.D.



PART NUMBERS

I.D. No.	Part No.	Qty	Description
1	1491	10	screw
2	12681	1	Split Ring
3	12680	1	Flat Gasket
4	12903	1	Mounting Flange
5	11444	10	Lock Washer
6	3136	10	Nut

INSTALLATION INSTRUCTIONS (SUGGESTED ASSEMBLY METHOD)

1. Place the split ring (2) around the existing sink bowl connection neck (Located just above the sink bowl connection lip).
2. Insert screws (1) through the split ring (2), flat gasket (3), and adaptor flange (4) tapering downward. With screws protruding through the adaptor flange (4), attach lock washers (5) and nuts (6). Tighten all screws evenly.

NOTE: This adaptor is used to reduce the sink bowl opening to a 3-1/2" diameter, accommodating a standard sink flange.