



## Submittal Data Sheet

1.0-Ton Wall Mounted Unit

FTX12NMVJURX12NMVJU

### FEATURES

- Up to 19 SEER / 12.5 EER / 9.0 HSPF
- High-efficiency inverter driven swing compressor
- Low ambient heating to 5°F / -4°F with optional drain pan heater
- Low ambient cooling capable
- Specialized drain pan design for improved cold climate drainage
- Mold-resistant washable air filter
- Titanium apatite photo catalytic air purification filter
- Vertical auto-swing air flow
- Standby electricity savings mode
- Hot-start function to eliminate start-up drafts
- Powerful (turbo) and Econo mode settings
- Wireless remote with backlit LCD display

### BENEFITS

- 10 Year limited parts warranty with online registration
- 5 Year limited parts warranty for commercial applications
- High efficiency cooling and heating operation provides utility bill savings
- Low profile indoor unit with matte white finish
- May qualify for regional utility rebates and incentives
- Compatible with optional Daikin ENVi Wi-Fi capable Smart Control

### INDOOR UNIT



### OUTDOOR UNIT





## Submittal Data Sheet

1.0-Ton Wall Mounted Unit

FTX12NMVJURX12NMVJU

### SYSTEM PERFORMANCE

Indoor Unit Model No.	FTX12NMVJU	Indoor Unit Name:	19 SEER HP DUCTLESS ID 1 TON
Outdoor Unit Model No.	RX12NMVJU	Outdoor Unit Name:	19 SEER HP DUCTLESS OD 1 TON
Rated Cooling Capacity (Btu/hr):	10,900	Rated Cooling Conditions:	Indoor (°F DB/WB): 80 / 67 Ambient (°F DB/WB): 95 / 75
Sensible Capacity (Btu/hr):	9,480	Rated Piping Length(ft):	25
Max/Min Cooling Capacity (Btu/hr):	13,300 / 4,400	Rated Height Difference (ft):	49.00
Cooling Input Power (kW):	0.870	Rated Heating Conditions:	Indoor (°F DB/WB): 70 / 70 Ambient (°F DB/WB): 47 / 43
SEER (Non-Ducted/Ducted):	19.00 /	HSPF (Non-Ducted/Ducted):	9.0 /
EER (Non-Ducted/Ducted):	12.50 /	Heating COP (Non-Ducted/Ducted):	3.7 /
Rated Heating Capacity (Btu/hr):	13,500		
Max/Min Heating Capacity (Btu/hr):	16,400 / 4,400		
Heating Input Power (kW):	1.04		

### SYSTEM DETAILS

Refrigerant Type:	R-410A	Cooling Operation Range (°F DB):	50 - 115
Holding Refrigerant Charge (lbs):	2.1	Heating Operation Range (°F WB):	5 - 75
Additional Charge (lb/ft):	0.01	Max. Pipe Length (Vertical) (ft):	
Pre-charge Piping (Length) (ft):	32	Cooling Range w/Baffle (°F DB):	0 - 115
Max. Pipe Length (Total) (ft):	66	Heating Range w/Baffle (°F WB):	-
Max Height Separation (Ind to Ind ft):	49		

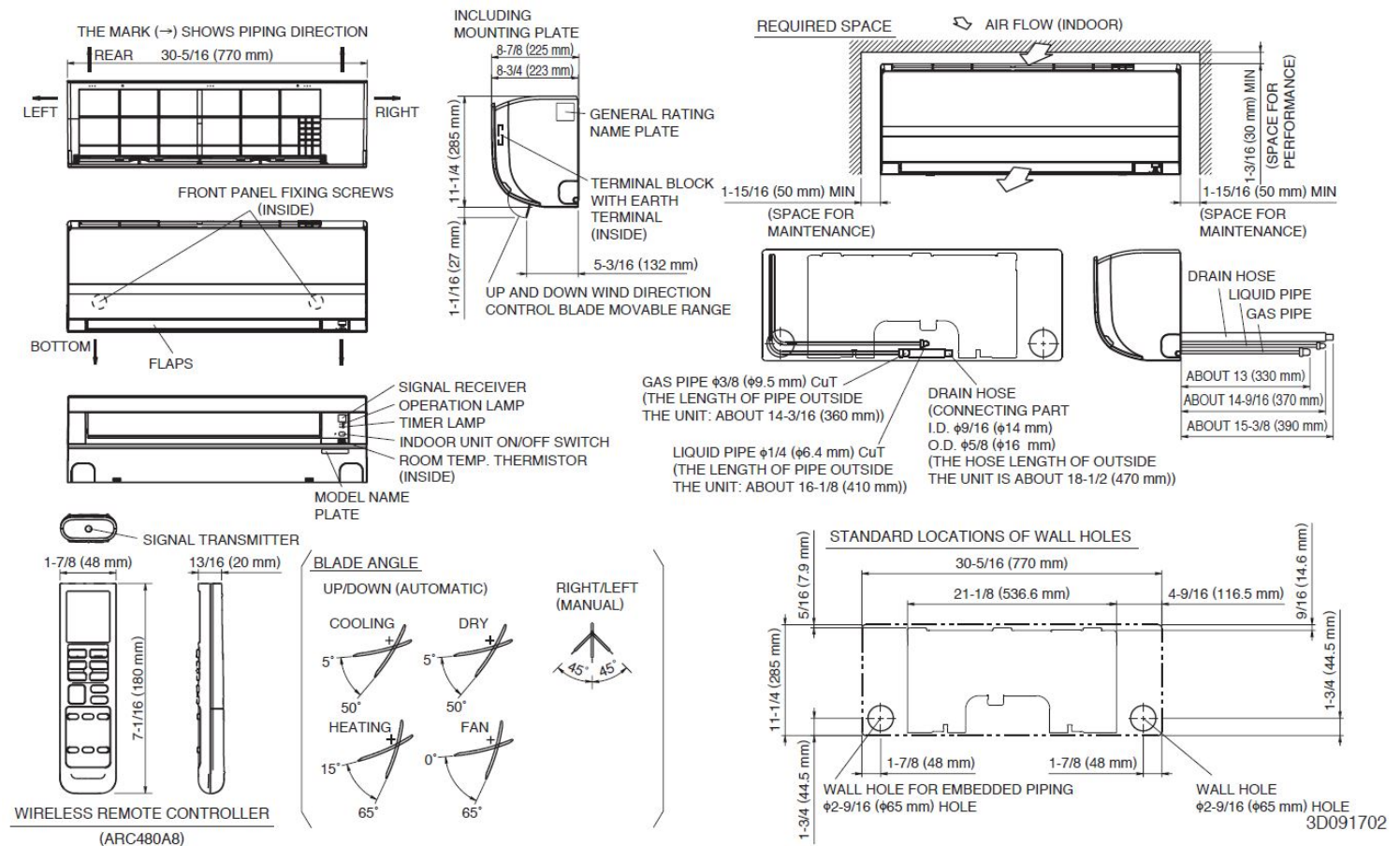
# Submittal Data Sheet

1.0-Ton Wall Mounted Unit  
FTX12NMVJURX12NMVJU

**INDOOR UNIT DETAILS**

Power Supply (V/Hz/Ph):	208-230 / 60 / 1	Airflow Rate (H/M/L/SL) (CFM):	434/311/247/145
Power Supply Connections:	Connects to outdoor unit	Moisture Removal (Gal/hr):	
Min. Circuit Amps MCA (A):	12.20	Gas Pipe Connection (inch):	3/8
Max Overcurrent Protection (MOP) (A):	15.00	Liquid Pipe Connection (inch):	1/4
Dimensions (HxWxD) (in):	11-1/4 x 30-3/8 x 8-3/4	Condensate Connection (inch):	5/8
Panel (HxWxD) (in):		Sound Pressure (H/M/L/SL) (dBA):	45/37/30/19
Net Weight (lb):	18	Sound Power Level (dBA):	
Panel Weight (lb):		Ext. Static Pressure (Rated/Max) (inWg):	/

## DIMENSIONAL DRAWING - INDOOR UNIT





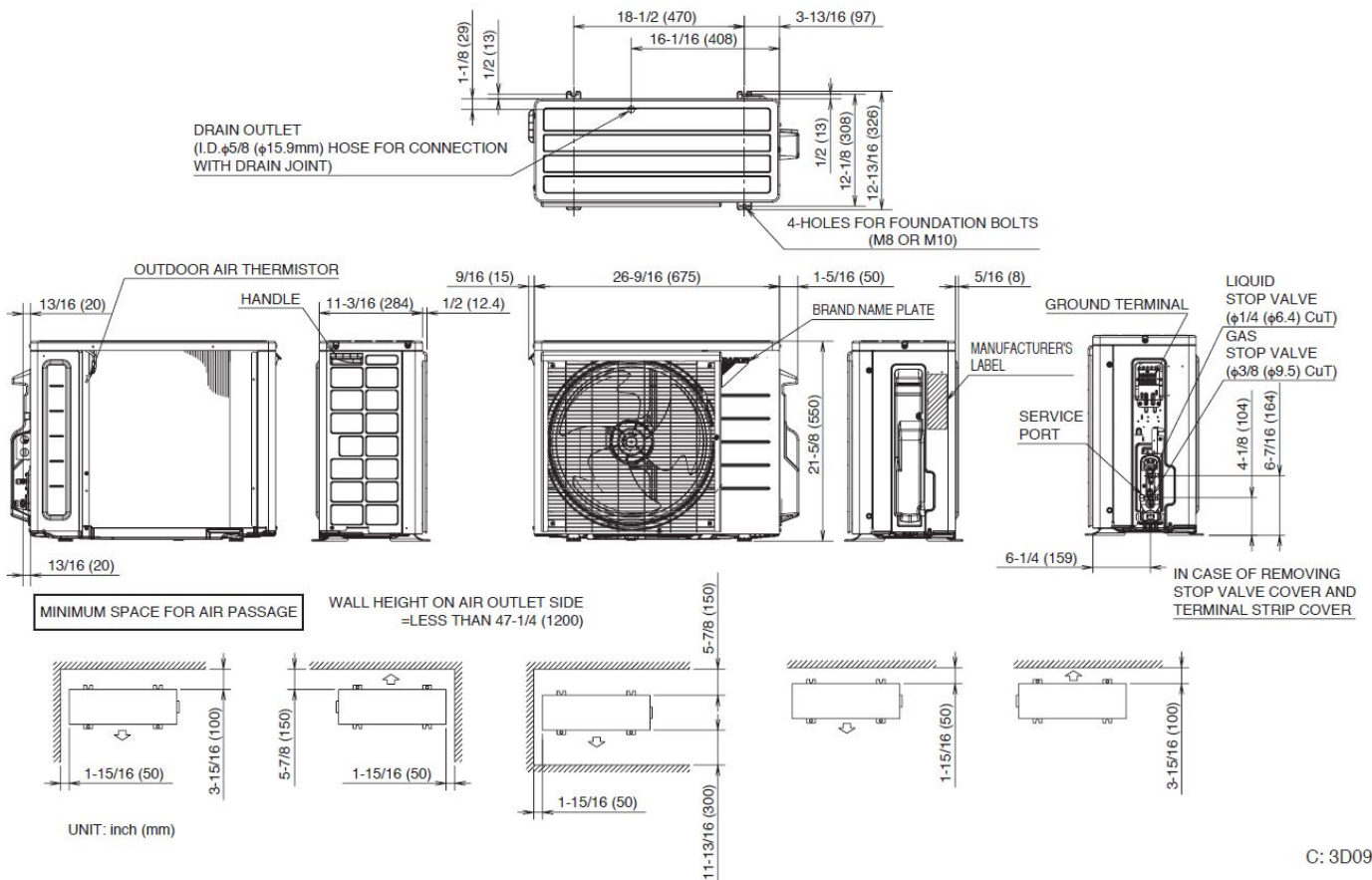
# Submittal Data Sheet

1.0-Ton Wall Mounted Unit  
FTX12NMVJURX12NMVJU

## OUTDOOR UNIT DETAILS

Power Supply (V/Hz/Ph):	208-230 / 60 / 1	Compressor Type:	Inverter
Power Supply Connections:	L1, L2, Ground	Capacity Control Range (%):	-
Min. Circuit Amps MCA (A):	12.20	Airflow Rate (H) (CFM):	1,105
Max Overcurrent Protection (MOP) (A):	15.00	Gas Pipe Connection (inch):	3/8
Max Starting Current MSC(A):		Liquid Pipe Connection (inch):	1/4
Rated Load Amps RLA(A):	8.5	Sound Pressure (H) (dBA):	49
Dimensions (HxWxD) (in):	21-5/8 x 26-9/16 x 11-3/16	Sound Power Level (dBA):	
Net Weight (lb):	60		

## DIMENSIONAL DRAWING - OUTDOOR UNIT



C: 3D092206