



Air Conditioning & Heating



GMS95 Models Qualify for a \$150 Tax Credit



PRODUCT SPECIFICATIONS

GMS95

95% AFUE

MULTI-POSITION, SINGLE-STAGE/MULTI-SPEED GAS FURNACE

HEATING CAPACITY: 46,000-115,000 BTU/H



Standard Features

- Corrosion-resistant, aluminized-steel tubular heat exchanger and stainless-steel recuperative coil
- Multi-position installation – upflow, horizontal right or left
- Energy-saving, reliable Hot Surface Ignition system, featuring a Norton® Mini-Igniter with patented adaptive learning algorithm
- Aluminized-steel inshot burners
- Energy-saving PSC, multi-speed, direct-drive blower motor
- Quiet, corrosion-resistant induced draft blower assembly
- Integrated furnace control with diagnostics
- Low-voltage terminal block
- Multiple flame roll-out switches, blower door safety switch, outlet air-limit & pressure switch for proof of combustion air
- 40VA transformer for heating and air conditioning control service
- Combination redundant gas valve and regulator
- Factory run-tested for heating or combination heating/cooling application
- Dual-certified for direct vent (2-pipe) or non-direct vent (1-pipe) applications
- All models comply with California NOx Standards

Cabinet Features

- Heavy-gauge, reinforced, fully insulated steel cabinet with durable baked-enamel finish of attractive architectural gray
- Foil-faced insulation-lined heat exchanger compartment
- Coil and furnace fit flush for easy installation
- Convenient left or right connection for gas and electric service
- Bottom or side air inlet
- Removable, solid-bottom block-off

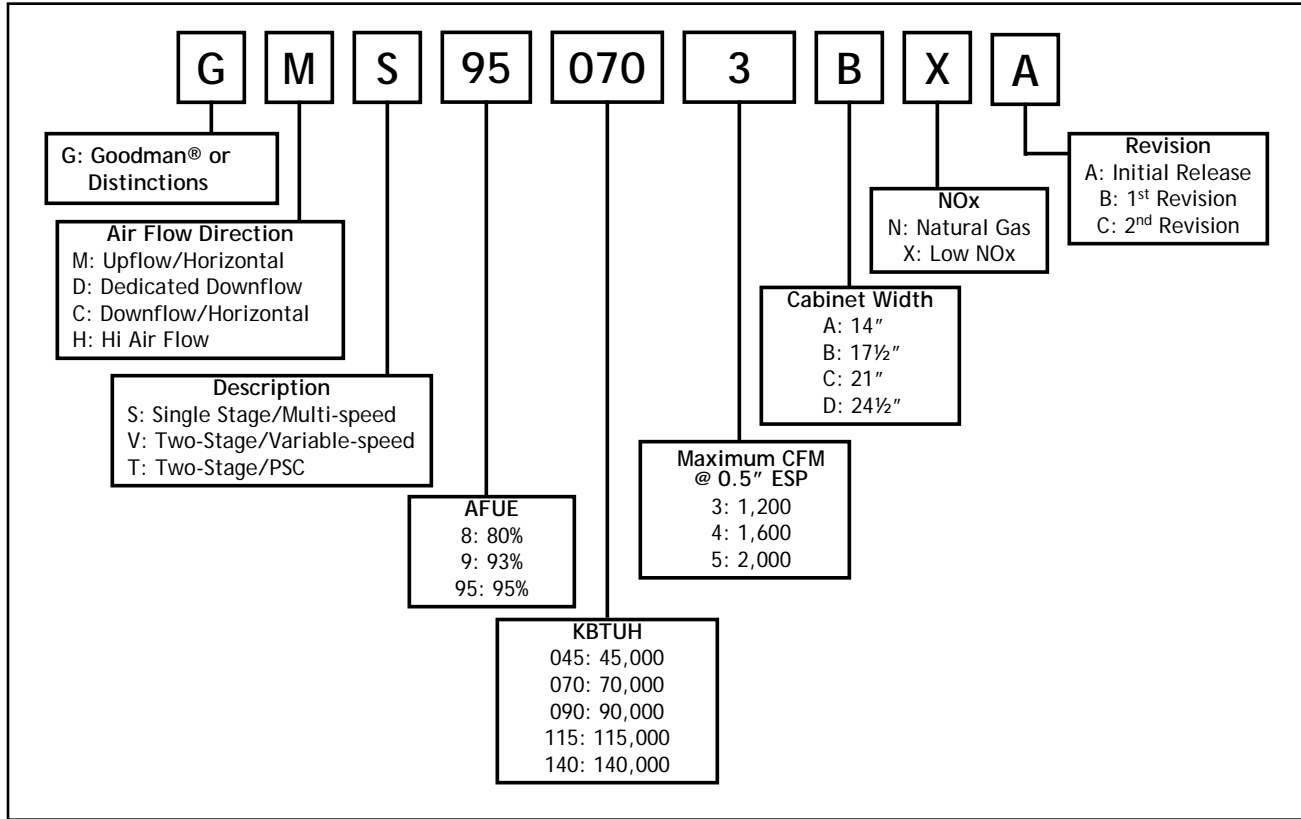
Accessories

- LP Conversion Kit & Low-Pressure Kit
- Electronic Air Cleaner
- Media Air Cleaner
- External Filter Rack
- High-Altitude Natural Gas/L.P. Kits
- High-Altitude Pressure Switch Kit
- Horizontal/Vertical Concentric Vent Kit
- Flush-mount Vent Kit
- Internal Filter Retention Kit—upflow, horizontal



PRODUCT SPECIFICATIONS

NOMENCLATURE



SPECIFICATIONS

	GMS95 0453BXA	GMS95 0703BXA	GMS95 0704CXA	GMS95 0904CXA	GMS95 0905DXA	GMS95 1155DXA
Heating Capacity						
Input (BTU/h) ¹	46,000	69,000	69,000	92,000	92,000	115,000
Output (BTU/h)	44,600	66,400	66,400	89,000	88,400	110,500
AFUE ²	95	95	95	95	95	95
Tons AC @ 0.5" ESP	3	3	4	4	5	5
Temperature Rise Range (° F)	35 - 65	30 - 60	35 - 65	30 - 60	35 - 65	35 - 65
Circular Motor						
Size (D x W)	10" x 7"	10" x 8"	10" x 10"	10" x 10"	11" x 10"	11" x 10"
Horsepower - RPM	1/3	1/3	1/2	1/2	3/4	3/4
Speed	4	4	4	4	4	4
Vent Diameter ³	2"	2"	2"	2"	3"	3"
No. of Burners	2	3	3	4	4	5
Filter Size (in²)						
Permanent	288	324	384	432	480	486
Disposable	576	672	768	864	960	972
Electrical Data						
Min. Circuit Ampacity ⁴	9.4	9.4	13.8	13.8	13.2	13.2
Max. Overcurrent Protection (amps) ⁵	15	15	15	15	15	15
Ship Weight (lbs)	132	135	136	158	172	175

¹ For altitudes above 2,000', reduce input rating 4% for each 1,000' above sea level.

² DOE AFUE based upon Isolated Combustion System (ICS)

³ Installer must supply one or two PVC pipes: one for combustion air (optional) and one for the flue outlet (required). Vent pipe must be either 2" or 3" in diameter, depending upon furnace input, number of elbows, length of run, and installation (1 or 2 pipes). The optional Combustion Air Pipe is dependent on installation/code requirements and must be 2" or 3" diameter PVC.

⁴ Minimum Circuit Ampacity = (1.25 x Circulator Blower Amps) + ID Blower amps. Wire size should be determined in accordance with National Electrical Codes. Extensive wire runs will require larger wire sizes.

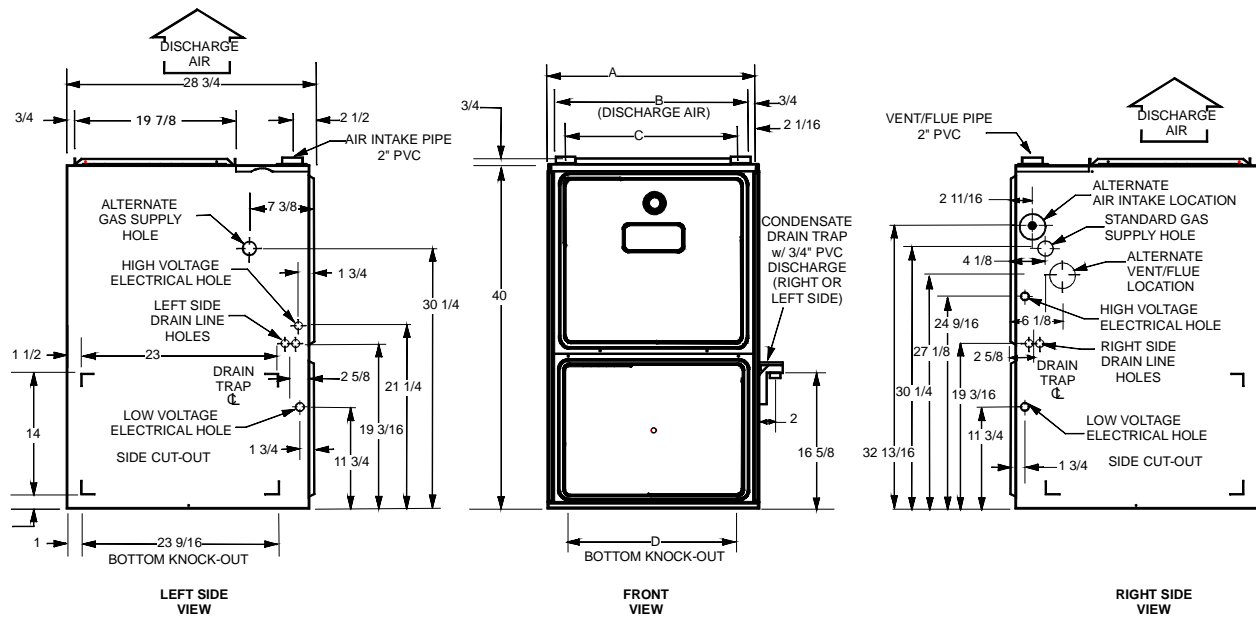
⁵ Maximum Overcurrent Protection Device refers to maximum recommended fuse or circuit breaker size. May use fuses or HACR-type circuit breakers of the same size as noted.

Notes:

- All furnaces are manufactured for use on 115 VAC, 60 Hz, single-phase electrical supply.
- Gas Service Connection 1/2" FPT
- Requirement: Size fuses and wires properly and make electrical connections in accordance with the National Electrical Code and/or all existing local codes.

PRODUCT SPECIFICATIONS

GMS95 DIMENSIONS



Model	A	B	C	D
GMS950453BXA GMS950703BXA	17 1/2"	16"	13 1/8"	13 5/8"
GMS950704CXA GMS950904CXA	21"	19 1/2"	16 1/8"	17 1/2"
GMS950905DXA GMS951155DXA	24 1/2"	23"	20 5/8"	20 7/8"

Notes:

- Installer must supply one or two PVC pipes: one for combustion air (optional) and one for the flue outlet (required). Vent pipe must be either 2" or 3" in diameter, depending upon furnace input, number of elbows, length of run and installation (1 or 2 pipes). The optional Combustion Air Pipe is dependent on installation/code requirements and must be 2" or 3" diameter PVC.
- Line voltage wiring can enter through the right or left side of the furnace. Low-voltage wiring can enter through the right or left side of furnace.
- Conversion kits for high-altitude natural gas operation are available. Contact your Goodman distributor or dealer for details.
- Installer must supply following gas line fittings, according to which entrance is used:
 Left—Two 90° elbows, one close nipple, straight pipe
 Right—Straight pipe to reach gas valve

MINIMUM CLEARANCES TO COMBUSTIBLE MATERIALS

Position	Sides	Rear	Front	Bottom	Flue	Top
Upflow	0"	0"	3"	C	0"	1"
Horizontal	6"	0"	3"	C	0"	6"

C = If placed on combustible floor, the floor MUST be wood ONLY.

Notes:

- For servicing or cleaning, a 36" front clearance is recommended.
- Unit connections (electrical, flue, and drain) may necessitate greater clearances than the minimum clearances listed below.
- In all cases, accessibility clearance must take precedence over clearances from the enclosure where accessibility clearances are greater.

PRODUCT SPECIFICATIONS

GMS95 BLOWER PERFORMANCE SPECIFICATIONS

CFM & Temperature Rise vs. External Static Pressure

Model	Motor Speed	Tons AC at 0.5" ESP	External Static Pressure, (Inches Water Column)												
			0.1		0.2		0.3		0.4		0.5		0.6	0.7	0.8
			CFM	Rise	CFM	Rise	CFM	Rise	CFM	Rise	CFM	Rise	CFM	CFM	CFM
GMS95 0453BXA	High	3.0	1352	29	1318	30	1260	31	1202	33	1128	35	1044	955	853
	Med	2.5	1214	32	1172	34	1123	35	1064	37	1012	39	938	859	741
	Med-Lo	2.0	997	40	994	40	960	41	923	43	884	45	817	741	611
	Low	1.5	757	52	753	52	734	54	704	56	674	59	620	524	438
GMS95 0703BXA	High	3.0	1449	41	1409	42	1326	45	1273	47	1201	49	1194	1136	1018
	Med	2.5	1192	50	1172	51	1141	52	1094	54	1046	57	973	904	793
	Med-Lo	2.0	981	61	962	62	943	63	917	65	888	67	830	764	665
	Low	1.5	750	79	730	81	714	83	692	86	657	90	620	570	502
GMS95 0704CXA	High	4.0	2069	29	1965	30	1871	32	1756	34	1661	36	1549	1415	1275
	Med	3.5	1752	34	1724	34	1667	36	1603	37	1488	40	1402	1290	1082
	Med-Lo	3.0	1437	41	1437	41	1417	42	1369	43	1320	45	1256	1140	984
	Low	2.5	1184	50	1177	50	1161	51	1132	52	1095	54	1047	928	837

Notes:

- CFM in chart is without filter(s). Filters do not ship with this furnace, but must be provided by the installer.
- All furnaces ship as high-speed cooling and medium-speed heating. Installer must adjust blower cooling and heating speed as needed.
- For most applications, about 400 CFM per ton when cooling is desirable.
- INSTALLATION IS TO BE ADJUSTED TO OBTAIN TEMPERATURE RISE WITHIN THE RANGE SPECIFIED ON THE RATING PLATE.
- The chart is for information only. For satisfactory operation, external static pressure must not exceed value shown on the rating plate.
- The above chart is for furnaces installed at 0-2000 feet. At higher altitudes, a properly de-rated unit will have approximately the same temperature rise at a particular CFM, while ESP at the CFM will be lower.

GMS95 BLOWER PERFORMANCE SPECIFICATIONS (CONT.)

CFM & Temperature Rise vs. External Static Pressure

Model	Motor Speed	Tons AC at 0.5" ESP	External Static Pressure, (Inches Water Column)												
			0.1		0.2		0.3		0.4		0.5		0.6	0.7	0.8
			CFM	Rise	CFM	Rise	CFM	Rise	CFM	Rise	CFM	Rise	CFM	CFM	CFM
GMS95 0904CXA	High	4.0	1970	40	1874	42	1757	45	1667	48	1566	51	1431	1334	1182
	Med	3.5	1713	46	1650	48	1572	50	1510	52	1418	56	1313	1211	1079
	Med-Lo	3.0	1439	55	1412	56	1370	58	1327	60	1260	63	1166	1078	956
	Low	2.5	1183	67	1155	69	1122	71	1108	72	1062	75	1011	931	816
GMS95 0905DXA	High	5.0	2147	37	2114	37	2057	39	2030	39	1978	40	1889	1784	1713
	Med	4.0	1675	47	1686	47	1640	48	1623	49	1557	51	1501	1455	1360
	Med-Lo	3.5	1489	53	1470	54	1436	55	1409	56	1361	58	1318	1243	1130
	Low	3.0	1307	61	1265	63	1234	64	1203	66	1168	68	1096	1053	991
GMS951 155DXA	High	5.0	2134	46	2103	47	2029	48	1941	51	1906	51	1818	1733	1625
	Med	4.0	1678	58	1643	60	1643	60	1577	62	1527	64	1489	1423	1339
	Med-Lo	3.5	1453	68	1440	68	1426	69	1363	72	1349	73	1314	1253	1205
	Low	3.0	1259	78	1239	79	1220	80	1181	83	1159	85	1118	1082	1015

Notes:

- CFM in chart is without filter(s). Filters do not ship with this furnace, but must be provided by the installer.
- All furnaces ship as high-speed cooling and medium-speed heating. Installer must adjust blower cooling and heating speed as needed.
- For most applications, about 400 CFM per ton when cooling is desirable.
- INSTALLATION IS TO BE ADJUSTED TO OBTAIN TEMPERATURE RISE WITHIN THE RANGE SPECIFIED ON THE RATING PLATE.
- The chart is for information only. For satisfactory operation, external static pressure must not exceed value shown on the rating plate.
- The above chart is for furnaces installed at 0-2000 feet. At higher altitudes, a properly de-rated unit will have approximately the same temperature rise at a particular CFM, while ESP at the CFM will be lower.

PRODUCT SPECIFICATIONS

ACCESSORIES

Model	Description	GMS95 0453BXA	GMS95 0703BXA	GMS95 0704CXA	GMS95 0904CXA	GMS95 0905DXA	GMS95 1155DXA
LPT-00A	LP Conversion Kit	✓	✓	✓	✓	✓	✓
LPLP01	LP Gas Low Pressure Kit	✓	✓	✓	✓	✓	✓
GSAS	Electronic Air Cleaners (-10, -11, -12, -18)	✓	✓	✓	✓	✓	✓
GMU	Media Air Cleaners (1620, 2020, 1625, 2025)	✓	✓	✓	✓	✓	✓
HANG11	High-Altitude Natural Gas Kit	1	1	1	1	1	1
HANG12	High-Altitude Natural Gas Kit	2	2	2	2	2	2
HALP10	High-Altitude L.P. Gas Kit	3	3	3	3	3	3
HAPS27	High-Altitude Pressure Switch Kit	3	3	3	3	3	3
EFR01	External Filter Rack	✓	✓	✓	✓	✓	✓
DCVK-20	Horizontal/Vertical Concentric Vent Kit (2")	✓	✓				
DCVK-30	Horizontal/Vertical Concentric Vent Kit (3")	✓	✓	✓	✓	✓	✓
0170K00000S	Flush-mount Vent Kit	✓	✓	✓	✓	✓	✓

✓ Available for this model

1- 7,001' to 9,000'

2- 9,001' to 11,000'

3- 7,001' to 11,000'

Note: All installations above 7,000' require a pressure switch change. For installation in Canada, furnaces are certified only to 4,500'.

THERMOSTATS

Model	Description
CHT18-60	Cooling/Heating, Mechanical
CH70TG	Cooling/Heating, Digital, Non-programmable
CHSATG	Cooling/Heating, Mechanical
H20TWR	Heating Only, Mechanical



Air Conditioning & Heating

Goodman Manufacturing Company, L.P., reserves the right to discontinue, or change at any time, specifications or designs without notice or without incurring obligations.

Copyright © 2006 • Goodman Manufacturing Company, L.P. • Houston, Texas

Goodman® brand products are proudly made in the USA.

Printed in the USA.