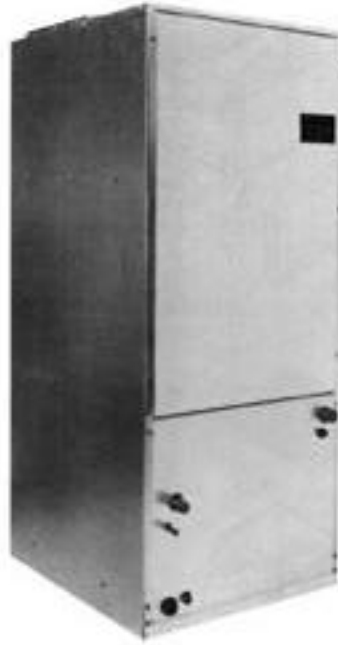


MULTI POSITION ELECTRIC HEAT/COOL AIRHANDLER



Description / Application

- Compact, versatile upflow, right or left horizontal multi-position.
- May be located in closet, utility room, or attic, crawl space or basement.

Cabinet Construction

- Insulated steel cabinet.

Cabinet Finish

- No rust galvanized stucco finish with painted front panels.

Standard Equipment

- Fully insulated cabinet.
- Direct drive multi-speed motor to permit air volume variation for heating & cooling application needs.
- Heaters are controlled by sequencers for better temperature control. This minimizes light dimming.

- Equipped with a check flowrater for Heat Pump and Cooling Unit Operation.
- Built-in coil with horizontal & vertical thermoplastic drain pans with secondary drains.
- Built-in filter provision (See Filter Chart).
- Rust resistant nickel chromium heating elements.
- Multiple branch circuit supply for lower installation costs.
- Power supply entry at top.
- Low voltage entry on left side and top.
- Low voltage field wiring connection is within cabinet.
- Factory installed wired and tested electric heat.
- Built-in overcurrent protection on all units as indicated in the Electrical Data Chart.
- Control circuitry arranged to readily permit staging as required.
- Factory installed circuit breakers on certain models (See Electrical Data Chart).
- Electric heat limit control.

Made in the USA by:
Goodman Manufacturing Company, L.P.
2550 North Loop West, Suite 400
Houston, Texas 77092
www.gmcproducts.com

PERFORMANCE RATINGS

Model No.	Capacity (TONS) Nominal (Cooling)	Capacity* BTUH 240V** (Heating)	Seasonal Efficiency AFUE%
A18-00	1 1/2	-	100.0
A18-05(C)	1 1/2	17000	100.0
A18-08(C)	1 1/2	24700	100.0
A24-00	2	-	100.0
A24-05(C)	2	17300	100.0
A24-08(C)	2	24900	100.0
A24-10(C)	2	33500	100.0
A30/32-00	2 1/2	-	100.0
A30/32-05	2 1/2	17600	100.0
A30/32-08(C)	2 1/2	25300	100.0
A30/32-10(C)	2 1/2	33800	100.0
A30/32-15	2 1/2	50100	100.0
A36-00	3	-	100.0
A36-05	3	17900	100.0
A36-06	3	22200	100.0
A36-08(C)	3	25600	100.0
A36-10(C)	3	34200	100.0
A36-15	3	50400	100.0
A36-20	3	66600	100.0
A42-00	3 1/2	-	100.0
A42-08(C)	3 1/2	25800	100.0
A42-10(C)	3 1/2	34300	100.0
A42-15	3 1/2	50600	100.0
A42-20	3 1/2	66800	100.0
A48/49-00	4	-	100.0
A49-08(C)	4	26000	100.0
A48/49-10	4	34500	100.0
A48/49-15	4	50700	100.0
A48/49-20	4	67000	100.0
A60/61-00	5	-	100.0
A60/61-10	5	35200	100.0
A60/61-15	5	51400	100.0
A60/61-20	5	67600	100.0

*Capacity and efficiency ratings in accordance with US Government standard tests.

**Capacity Correction Factors 208V = 0.75, 230V = 0.92 (Heating)

+Refer to unit specifications for actual rating

BLOWER PERFORMANCE

Model	Speed	CFM Delivered Against External Static Pressure, inch H ₂ O				
		0.1	0.2	0.3	0.4	0.5
A18	HIGH	700	630	580	530	490
	LOW	620	560	500	420	360
A24	HIGH	960	930	890	840	780
	LOW	810	780	760	720	670
A30/32	HIGH	1150	1090	1040	980	910
	LOW	1060	1015	970	910	860
A36	HIGH	1450	1415	1360	1280	1200
	LOW	1260	1240	1200	1145	1060
A42	HIGH	1550	1520	1470	1410	1350
	LOW	1280	1250	1200	1200	1175
A48/49	HIGH	1670	1610	1500	1440	1370
	LOW	1310	1300	1290	1280	1260
A60/61	HIGH	2170	2080	2000	1920	1850
	LOW	1900	1810	1700	1590	1500

Dry coil with Filter in Place

SCFM Correction for Wet Coil - 4%

PHYSICAL DATA

Model No.	Blower		KW @230V (No. of Elements)	Coil Drain Conn FPT	Refrigerant Connection		Approx. Shipping Weight
	Dia.	Width			Liq.	Suct.	
A18-00	8	6	-	3/4	3/8	5/8	105
A18-05(C)	8	6	(1) 4.75	3/4	3/8	5/8	105
A18-08(C)	8	6	(2) 3.5	3/4	3/8	5/8	108
A24-00	9 1/2	6	-	3/4	3/8	3/4	106
A24-05(C)	9 1/2	6	(1) 4.75	3/4	3/8	3/4	109
A24-08(C)	9 1/2	6	(2) 3.5	3/4	3/8	3/4	109
A24-10(C)	9 1/2	6	(2) 4.75	3/4	3/8	3/4	109
A30-00	9 1/2	6	-	3/4	3/8	3/4	113
A30-05	9 1/2	6	(1) 4.75	3/4	3/8	3/4	116
A30-08(C)	9 1/2	6	(2) 3.5	3/4	3/8	3/4	116
A30-10(C)	9 1/2	6	(2) 4.75	3/4	3/8	3/4	116
A30-15	9 1/2	6	(3) 4.75	3/4	3/8	3/4	116
A32-00	9 1/2	6	-	3/4	3/8	3/4	120
A32-05	9 1/2	6	(1) 4.75	3/4	3/8	3/4	120
A32-08(C)	9 1/2	6	(2) 3.5	3/4	3/8	3/4	120
A32-10(C)	9 1/2	6	(2) 4.75	3/4	3/8	3/4	122
A32-15	9 1/2	6	(3) 4.75	3/4	3/8	3/4	125
A36-00	9 1/2	8	-	3/4	3/8	3/4	141
A36-05	9 1/2	8	(2) 4.75	3/4	3/8	3/4	144
A36-06	9 1/2	8	(2) 3.0	3/4	3/8	3/4	144
A36-08(C)	9 1/2	8	(2) 3.5	3/4	3/8	3/4	144
A36-10(C)	9 1/2	8	(2) 4.75	3/4	3/8	3/4	144
A36-15	9 1/2	8	(3) 4.75	3/4	3/8	3/4	145
A36-20	9 1/2	8	(4) 4.75	3/4	3/8	3/4	145
A42-00	9 1/2	8	-	3/4	3/8	3/4	144
A42-08(C)	9 1/2	8	(2) 3.5	3/4	3/8	3/4	147
A42-10	9 1/2	8	(2) 4.75	3/4	3/8	3/4	147
A42-15	9 1/2	8	(3) 4.75	3/4	3/8	3/4	147
A42-20	9 1/2	8	(4) 4.75	3/4	3/8	3/4	148
A48/49-00	9 1/2	8	-	3/4	3/8	7/8	173
A49-08(C)	9 1/2	8	(2) 3.5	3/4	3/8	7/8	176
A48.49-10	9 1/2	8	(2) 4.75	3/4	3/8	7/8	176
A48/49-15	9 1/2	8	(3) 4.75	3/4	3/8	7/8	176
A48/49-20	9 1/2	8	(4) 4.75	3/4	3/8	7/8	176
A60-00	10 5/8	10 5/8	-	3/4	3/8	7/8	192
A60-10	10 5/8	10 5/8	(2) 4.75	3/4	3/8	7/8	195
A60-15	10 5/8	10 5/8	(3) 4.75	3/4	3/8	7/8	195
A60-20	10 5/8	10 5/8	(3) 4.75	3/4	3/8	7/8	195
A61-00	10 5/8	10 5/8	-	3/4	3/8	7/8	192
A61-10	10 5/8	10 5/8	(2) 4.75	3/4	3/8	7/8	195
A61-15	10 5/8	10 5/8	(3) 4.75	3/4	3/8	7/8	195
A61-20	10 5/8	10 5/8	(4) 4.75	3/4	3/8	7/8	195

HEATING TEMPERATURE RISE °F

MODEL	KBTUH HEAT	AIR FLOW SCFM												
		300	400	500	600	700	800	900	1000	1200	1400	1600	1800	2000
AXX-05	17.5	54°	41	32°	27°	23°	20°	18°	16°	---	---	---	---	---
AXX-06	22	68°	51	41°	34°	29°	25°	23°	20°	---	---	---	---	---
AXX-08	25.5	79°	59	47°	39°	34°	30°	26°	24°	20°	17°	15°	13°	12°
AXX-10	34.3	106°	79	64°	53°	45°	40°	35°	32°	26°	23°	20°	18°	16°
AXX-15	50.6	156°	117°	94°	78°	67°	59°	52°	47°	39°	33°	29°	26°	23°
AXX-20	67.1	---	---	---	104°	89°	78°	69°	62°	52°	44°	39°	35°	31°

*NOTE: DO NOT OPERATE UNIT WITHIN THE SHADED AREA.

ELECTRICAL DATA

Model No.	Single Supply Circuit		Multiple Supply Circuit						NOM. KW @ 240V	Min. VAC	Max VAC	Blower Motor	
	Minimum Ampacity @208/240V	Maximum Overcurrent Prot. Amps @208/240V	Min. Ampacity Per Circuit @208/240V			Max. Overcurrent Protection Amps @208/240V						FLA	HP
			1	2	3	1	2	3					
A18-00	2.1/2.1	15/15	--	--	--	--	--	--	--	197	253	1.7	1/5
A18-05(C)	23/27	30/30	--	--	--	--	--	--	4.75			1.7	1/5
A18-08(C)	34/39	40/40	--	--	--	--	--	--	7.0			1.7	1/5
A24-00	2.1/2.1	15/15	--	--	--	--	--	--	--	197	253	1.7	1/5
A24-05(C)	23/27	30/30	--	--	--	--	--	--	4.75			1.7	1/5
A24-08(C)	34/39	40/40	--	--	--	--	--	--	7.0			1.7	1/5
A24-10(C)	45/52	60/60	--	--	--	--	--	--	9.50			1.7	1/5
A30-00	3.3/3.3	15/15	--	--	--	--	--	--	--	197	253	2.6	1/3
A30-05	25/28	30/30	--	--	--	--	--	--	4.75			2.6	1/3
A30-08(C)	35/39	40/40	--	--	--	--	--	--	7.0			2.6	1/3
A30-10(C)	46/53	60/60	--	--	--	--	--	--	9.5			2.6	1/3
*A30-15	67/77	70/80	43/49	23/27	--	60/60	30/30	--	14.25			2.6	1/3
A32-00	3.3/3.3	15/15	--	--	--	--	--	--	--	197	253	2.6	1/3
A32-05	25/28	30/30	--	--	--	--	--	--	4.75			2.6	1/3
A32-08(C)	35/39	40/40	--	--	--	--	--	--	7.0			2.6	1/3
A32-10(C)	46/53	60/60	--	--	--	--	--	--	9.5			2.6	1/3
*A32-15	67/77	70/80	43/49	24/28	--	60/60	30/30	--	14.25			2.6	1/3
A36-00	3.3/3.3	15/15	--	--	--	--	--	--	--	197	253	2.6	1/3
A36-05	25/28	30/30	--	--	--	--	--	--	4.75			2.6	1/3
A36-06	29/34	30/40	--	--	--	--	--	--	6.0			2.6	1/3
A36-08(C)	35/39	40/40	--	--	--	--	--	--	7.0			2.6	1/3
A36-10(C)	45/53	60/60	--	--	--	--	--	--	9.5			2.6	1/3
*A36-15	67/77	70/80	43/49	24/28	--	60/60	30/30	--	14.25			2.6	1/3
*A36-20	89/102	100/110	43/49	46/53	--	60/60	60/60	--	19.0			2.6	1/3
A42-00	4.5/4.5	15/15	--	--	--	--	--	--	--	197	253	3.6	1/2
*A42-08(C)	36/40	40/40	--	--	--	--	--	--	7.0			3.6	1/2
A42-10(C)	47/54	60/60	--	--	--	--	--	--	9.5			3.6	1/2
*A42-15	69/79	70/80	43/49	25/29	--	60/60	30/30	--	14.25			3.6	1/2
*A42-20	91/104	100/110	43/49	52/59	--	60/60	60/60	--	19.0			3.6	1/2
A48/49-00	4.5/4.5	15/15	--	--	--	--	--	--	--	197	253	3.6	1/2
*A49-08(C)	36/40	40/40	--	--	--	--	--	--	7.0			3.6	1/2
*A48/49-10	47/54	60/60	--	--	--	--	--	--	9.5			3.6	1/2
*A48/49-15	69/79	70/80	43/49	25/29	--	60/60	30/30	--	14.25			3.6	1/2
*A48/49-20	91/104	100/110	43/49	47/54	--	60/60	60/60	--	19.0			3.6	1/2
A60-00	5.8/5.8	15/15	--	--	--	--	--	--	--	197	253	4.6	3/4
*A60-10	48/55	60/60	--	--	--	--	--	--	9.75			4.6	3/4
*A60-15	69/79	70/80	43/49	26/30	--	60/60	30/30	--	14.25			4.6	3/4
*A60-20	92/105	100/110	43/49	48/55	--	60/60	60/60	--	19.0			4.6	3/4
A61-00	5.8/5.8	15/15	--	--	--	--	--	--	--	197	253	4.6	3/4
*A61-10	48/55	60/60	--	--	--	--	--	--	9.5			4.6	3/4
*A61-15	69/79	70/80	43/49	26/30	--	60/60	30/30	--	14.25			4.6	3/4
*A61-20	92/105	100/110	43/49	48/55	--	60/60	60/60	--	19.0			4.6	3/4

* Air Handler Models with Circuit Breaker above –10 KW

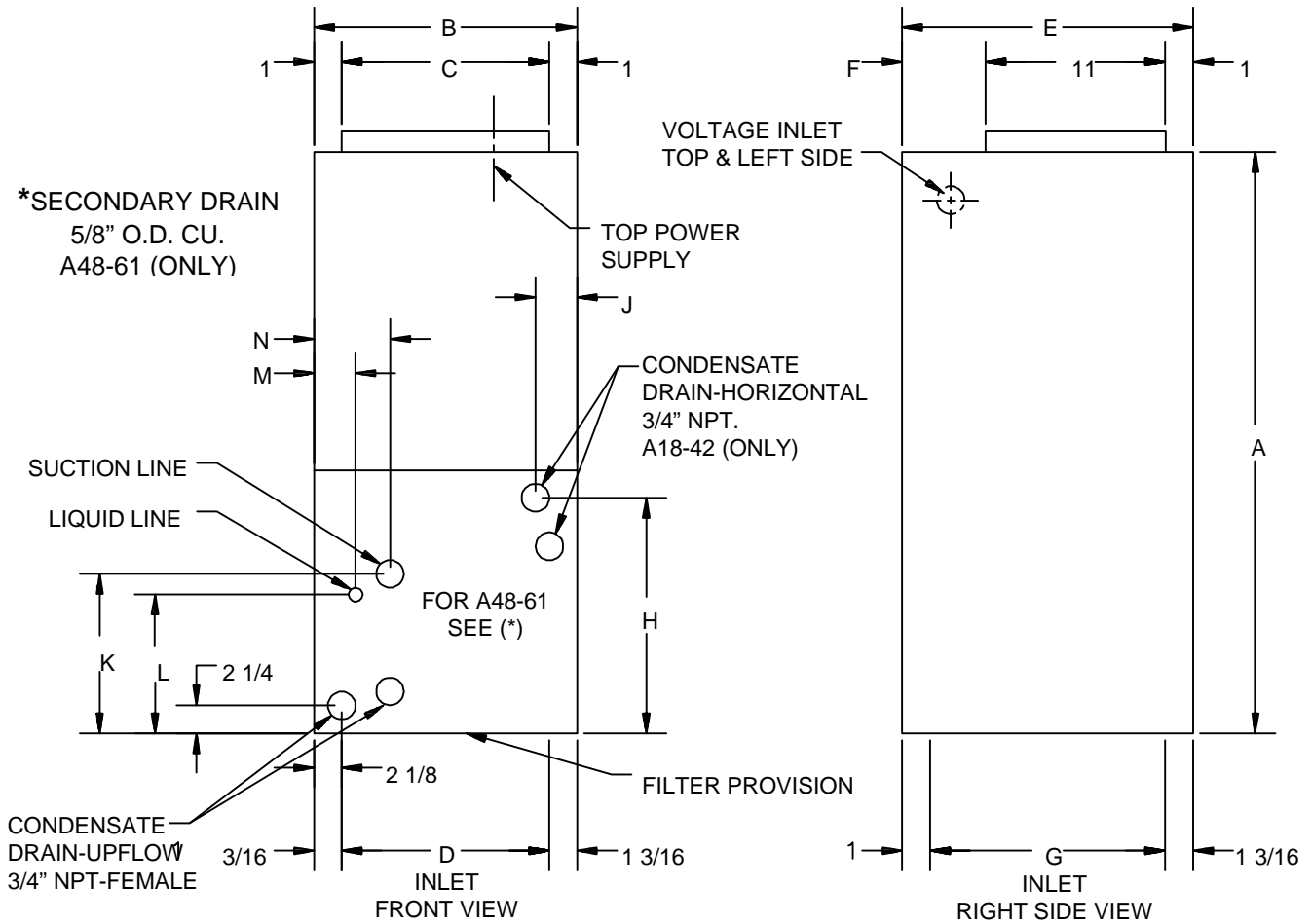
(C) AirHandler Models with Circuit Breaker –10 KW and under

Heating Capacity / KW Correction Factor

Supply Voltage	240	230	220	210	208
Correction Factor	1.00	0.92	.84	.77	.75

Multiply the 240 volt capacity by factors

Model: A18-61



Model	A	B	C	D	E	F	G	H	J	K	L	M	N
A18, 24, 30, 32	41 1/8	15 1/2	13 1/2	13 1/8	22	10	19.812	14 3/4	1 3/4	9 7/8	8 1/4	2	2 3/4
A36, 42	46 3/4	19 1/2	17 1/2	17 1/8	22	10	19.812	14 3/4	1 3/4	9 7/8	8 1/4	2	2 3/4
A48, 49, 60, 61	53 1/4	22	20	19 5/8	24	12	21.812	20 3/4	1 5/8	10 1/2	8 1/8	1 3/16	3 1/2

* A48-61, Secondary Drain 5/8 O.D. Copper Tube

FILTER - PERMANENT WASHABLE

Model No.	Filter size (Actual Dimensions)
A18, 24, 30, 32	15" x 20" x 1"
A36, 42	19" x 22" x 1"
A48, 49, 60, 61	21 1/2" x 24" x 1"

Note: All filters above must be cut to size.
Filter will be field supplied.

NOTE: SPECIFICATIONS AND PERFORMANCE DATA LISTED HEREIN ARE SUBJECT TO CHANGE WITHOUT NOTICE