



Fernco Flexible Couplings

The industry standard for sewer, drain, waste & vent piping.

Specially formulated PVC compound positively seals any sewer and drain connection.



Because of their quality and ease of installation, Fernco Flexible Couplings have found wide acceptance among sewer and plumbing contractors and municipalities. Fernco couplings are used for all types of in-house and sewer applications: drain, waste, repairs, vent piping, house-to-main, cut-ins, conductor and roof drains and increasers-reducers.

Made of tough elastomeric polyvinyl chloride (PVC), they are strong, resilient and unaffected by soil conditions. They are also resistant to chemicals, ultraviolet rays, fungus growth, and normal sewer gases due to the inert nature and physical properties of the material. And they are leakproof, rootproof and seal against infiltration and exfiltration.

The dimensional flexibility of Fernco couplings ensures leakproof seals on virtually any pipe material: plastic, cast iron, asbestos cement, clay, concrete, steel, copper and ductile iron. All couplings are clearly marked with part number, size, and pipe materials that the coupling will connect. Fernco makes fast delivery of stock items with no minimum order required. For special applications, our custom design service can supply couplings to individual customer requirements.



Tested designs backed by over four decades of proven performance.

- Positive seal against infiltration and exfiltration
- Leakproof, rootproof and are resistant to chemicals, ultraviolet rays, fungus growth, and normal sewer gases
- Conforms to ASTM D 5926, C 1173 and CSA B602
- Connects pipes of same or different sizes and materials quickly and easily
- Stainless steel clamps are corrosion-resistant and rustproof

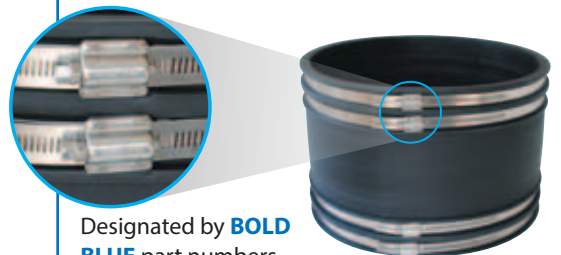
Maximum test pressure: 4.3 PSI (29.6 KPA)

Maximum operating temperature: 140° F nonconsistent

For further information on code approvals, please contact the Fernco Customer Service Department.

High Torque Clamps

NOW STANDARD on ALL 18" and larger couplings



Designated by **BOLD BLUE** part numbers

United States

PH: 810-503-9000
FX: 810-503-1015
fernco.com



Canada

PH: 519-332-6711
FX: 519-332-8610
fernco.ca



Stock Couplings



1056-075 coupling shown at approximately actual size of 2 3/8" high

Fernco makes the most complete line in the industry, from sizes of 3/4" to 27" (19mm to 381mm) with couplings available to connect any two pipes. Large Diameter Couplings are available and can be made to your specific requirements. Because Fernco Couplings have earned a reputation for consistent, superior performance, you can have full confidence in their quality and reliability.

Available from
3/4" to 60"

Complete sizing charts on pages 14-16



1056-2727 coupling shown at actual size of 27" dia.

FLEXIBLE COUPLINGS

Large Diameter Couplings

For non-standard or special size applications.

The ideal coupling for repairs, alterations or rehabilitation of large diameter sewer pipe. These couplings are made from flexible PVC and offer easy installation and leak free connections. They are engineered for use with all common sewer piping materials: clay, concrete, cast and ductile iron, AC, plastic or fiberglass.



This product can be custom ordered for ANY common sewer pipe size and material combination.

LDC TECHNICAL SPECS

- 10 inches wide
- 1/2 inch thick with multiple sealing ribs
- 4 - Series 304 stainless steel High Torque Clamps with multiple take up points
- Up to 120 in-lbs of torque for greater sealing pressure

Order LDCs by specifying the outside diameter (O.D.) of both pipes in inches.

*Where O.D. differences range from 1-1/4" - 12", a Fernco bushing system is available.

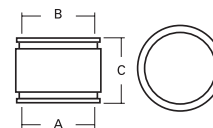
NOTE: Never install this type of coupling until you read and understand the installation instructions and verify the dimensions ordered.



Flexible Couplings - SIZING CHARTS for STOCK COUPLINGS

*Designated part numbers come with an insert bushing.

BOLD BLUE part numbers come with High Torque Clamps



1001 Series - Clay to Clay

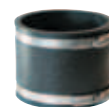
Part No.	A		B		C	
	in.	mm	in.	mm	in.	mm
1001-44	5.29	134	5.29	134	4.10	104
1001-44WC	5.51	140	5.51	140	3.97	101
1001-54	6.05	154	5.54	141	5.00	127
1001-55	6.48	165	6.48	165	5.97	152
1001-64	7.39	188	5.63	143	6.02	153
*1001-64WC	8.00	203	5.50	140	6.00	152
1001-65	7.35	187	6.61	168	5.76	146
1001-66	7.50	191	7.50	191	6.00	152
1001-66WC	8.01	203	8.01	203	5.91	150
*1001-84	9.50	241	5.13	130	5.68	144
*1001-86	9.50	241	7.13	181	5.68	144
1001-86WC	9.96	253	7.80	198	5.93	151
1001-88	9.65	245	9.65	245	6.00	152
1001-88WC	9.96	253	9.96	253	5.93	150
*1001-10-8	12.50	318	9.65	245	6.13	156
1001-1010	12.40	315	12.40	315	6.00	152
1001-1010WC	12.40	315	12.40	315	5.90	150
1001-1210	14.50	368	12.50	318	6.37	162
1001-1212	14.51	369	14.51	369	6.00	152
1001-1212WC	15.25	387	15.25	387	6.42	163
*1001-1510	18.14	461	12.60	320	10.14	258
*1001-1512	18.14	461	14.38	365	6.85	174
1001-1515	18.14	461	18.14	461	9.89	251
1001-1818	21.90	556	21.90	556	10.00	254
1001-2121	25.40	645	25.40	645	10.00	254
1001-2424	28.97	736	28.97	736	10.00	254
1001-2727	32.40	823	32.40	823	10.00	254

1002-55	6.05	154	5.54	141	5.03	128
*1002-55WC	6.81	173	5.17	131	5.81	148
1002-64	7.34	186	4.50	114	5.56	141
*1002-64WC	8.00	203	4.50	114	6.00	152
1002-65	7.39	188	5.63	143	5.68	144
1002-66	7.35	187	6.61	168	5.76	146
1002-66WC	8.00	203	6.66	169	6.00	152
*1002-84	9.33	237	4.38	111	5.93	151
1002-86	9.33	237	6.20	157	5.93	151
*1002-86WC	10.00	254	6.38	162	6.00	152
1002-88	9.63	245	8.64	219	5.74	146
1002-88WC	10.00	254	8.66	220	6.00	152
*1002-10-6	12.50	318	6.38	162	6.38	162
*1002-10-8	12.50	318	8.50	216	6.13	156
1002-1010	12.50	318	10.50	267	5.88	149
1002-1010WC	12.60	320	10.60	269	6.37	162
*1002-1210	14.50	368	10.75	273	6.60	168
1002-1212	14.50	368	12.50	318	6.37	162
1002-1212WC	16.29	414	12.39	315	6.30	160
*1002-1215	15.38	391	14.38	365	6.32	161
*1002-12-8	14.50	368	8.50	216	6.60	168
*1002-1510	18.14	461	10.60	269	6.85	174
*1002-1512	18.14	461	12.60	320	6.85	174
1002-1515	18.14	461	15.60	396	6.85	174
1002-1515WC	19.82	503	15.43	392	9.68	246
1002-1818	21.90	556	18.88	480	9.63	245
*1002-1818WC	22.59	574	18.90	480	10.00	254
*1002-2121	25.40	645	22.30	566	10.00	254
*1002-2424	28.97	736	25.00	635	10.00	254
*1002-2727	32.40	823	28.20	716	10.00	258



1002 Series - Clay to Cast Iron or Plastic

Part No.	A		B		C	
	in.	mm	in.	mm	in.	mm
*1002-42	5.25	133	2.38	60	3.91	99
1002-43	5.25	133	3.38	86	3.91	99
*1002-43WC	5.40	137	3.50	89	4.00	102
1002-44	5.14	131	4.52	115	3.96	101
1002-44WC	5.40	137	4.56	116	4.00	102
1002-46	5.18	132	6.39	162	5.82	148
*1002-54	6.05	154	4.38	111	5.28	134
*1002-54WC	6.84	174	4.29	109	5.93	151



1003 Series - Clay to Asbestos Cement Fibre or Ductile Iron

Part No.	A		B		C	
	in.	mm	in.	mm	in.	mm
1003-44	5.39	137	4.89	124	3.92	100
1003-44WC			5.00	127		
1003-46	5.17	131	6.81	173	5.81	148
*1003-54	6.05	154	5.00	127	5.28	134
1003-55	6.00	152	5.86	149	4.91	125
1003-64	7.39	188	5.63	143	5.68	144
*1003-64WC	8.01	203	5.00	127	5.95	151
*1003-65	7.35	187	5.90	150	6.00	152
1003-66	7.31	186	6.99	178	5.92	150
*1003-66WC	8.01	203	6.80	173	5.95	151

United States

PH: 810-503-9000

FX: 810-503-1015

fernco.com



Canada

PH: 519-332-6711

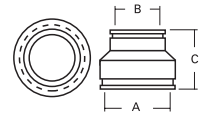
FX: 519-332-8610

fernco.ca

Flexible Couplings - SIZING CHARTS for STOCK COUPLINGS

*Designated part numbers come with an insert bushing.

BOLD BLUE part numbers come with High Torque Clamps



*1003-85	9.33	237	5.90	150	6.18	157
*1003-86	9.63	245	7.20	183	5.99	152
*1003-86WC	10.00	254	7.20	183	6.00	152
1003-88	9.50	241	9.00	229	5.99	152
*1003-88WC	9.96	253	9.05	230	5.93	151
*1003-8-10	11.05	281	9.65	245	5.95	151
*1003-1010	12.40	315	11.12	282	6.25	159
*1003-1010WC	12.40	315	11.12	282	6.00	152
*1003-10-6	12.40	315	6.80	173	6.25	159
*1003-10-8	12.50	318	9.05	230	6.13	156
*1003-1210	14.50	368	11.12	282	6.62	168
1003-1212	15.00	381	13.29	337	5.76	146
*1003-1212WC	15.25	387	13.20	335	6.42	163
*1003-12-8	14.50	368	9.05	230	6.62	168
*1003-1510	18.14	461	11.12	282	6.85	174
*1003-1512	18.14	461	13.20	335	6.85	174
*1003-1515	18.14	461	16.50	419	10.14	258
1003-1516	18.10	460	17.80	452	10.00	254
*1003-1818	21.60	549	19.50	495	10.00	254
1003-2424	28.90	734	25.80	655	10.00	254



1004 Series - Concrete to Concrete

Part No.	A		B		C	
	in.	mm	in.	mm	in.	mm
1004-44	5.51	140	5.51	140	3.97	101
*1004-64	7.67	195	5.62	143	5.86	149
1004-66	7.58	193	7.58	193	5.94	151
*1004-86	10.25	260	7.80	198	6.18	157
1004-88	10.38	264	10.38	264	5.90	150
1004-10-8	12.50	318	10.65	271	6.37	162
1004-99	Use part number 1001-1010					
1004-1010	12.40	315	12.40	315	6.00	152
*1004-1210	15.38	391	12.60	320	6.40	163
1004-1212	15.38	391	15.38	391	6.40	163
1004-1515	19.70	500	19.70	500	10.00	254
1004-1818	22.50	572	22.50	572	10.00	254
1004-2121	26.70	678	26.70	678	10.00	254
1004-2424	30.50	775	30.50	775	10.00	254
1004-2727	34.00	864	34.00	864	10.00	254



1005 Series - Concrete to Clay

Part No.	A		B		C	
	in.	mm	in.	mm	in.	mm
*1005-44	5.51	140	5.00	127	4.22	107
*1005-64	7.58	193	5.00	127	6.19	157
*1005-66	7.58	193	7.38	187	6.19	157
*1005-86	10.38	264	7.20	183	6.15	156
*1005-88	10.38	264	9.65	245	6.15	156
1005-1010	12.40	315	12.40	315	6.00	152
*1005-1210	15.38	391	12.60	320	6.40	163
*1005-1212	15.38	391	14.38	365	6.40	163
*1005-1512	19.82	503	14.38	365	10.00	254
*1005-1515	19.70	500	17.40	442	10.00	254



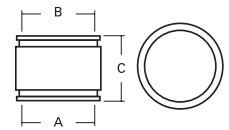
1006 Series - Concrete to Cast Iron or Plastic

Part No.	A		B		C	
	in.	mm	in.	mm	in.	mm
1006-43	5.61	142	3.53	90	3.90	99
1006-44	5.57	141	4.31	109	3.96	101
1006-46	5.46	139	6.48	139	5.77	147
1006-64	7.75	197	4.31	109	5.92	150
*1006-65	7.66	195	5.50	140	5.86	149
1006-66	7.66	195	6.65	169	5.86	149
*1006-68	7.80	198	8.64	219	6.04	153
*1006-84	10.25	260	4.38	111	6.18	157
*1006-86	10.25	260	6.38	162	6.18	157
1006-88	10.25	260	8.50	216	5.93	151
*1006-10-6	12.60	320	6.38	162	6.60	168
*1006-10-8	12.50	318	8.38	213	6.62	168
1006-1010	12.60	320	10.60	269	6.37	162
*1006-12-8	16.29	414	8.38	213	6.55	166
*1006-1210	16.29	414	10.75	273	6.55	166
1006-1212	16.29	414	12.39	315	6.30	160
*1006-1512	19.82	503	12.60	320	9.93	252
1006-1515	19.82	503	15.43	392	9.68	246
*1006-1818	22.50	572	18.90	480	10.00	254
*1006-2121	26.70	678	22.30	566	10.00	254
*1006-2424	30.50	775	25.00	635	10.00	254
*1006-2727	34.00	864	28.00	711	10.00	254

Flexible Couplings continued on page 28

Flexible Couplings - SIZING CHARTS for STOCK COUPLINGS

*Designated part numbers come with an insert bushing.



1051 Series - Asbestos Cement Fibre (AC) or Ductile Iron to Cast Iron or Plastic

Part No.	A		B		C	
	in.	mm	in.	mm	in.	mm
*1051-43	4.80	122	3.38	86	4.06	103
1051-44	4.80	122	4.53	115	4.06	103
*1051-45	5.00	127	5.52	140	4.22	107
*1051-46	4.75	121	6.60	168	5.99	152
1051-54	5.75	146	4.47	114	3.95	100
1051-55	6.05	154	5.54	141	5.03	128
*1051-56	5.90	150	6.60	168	5.99	152
1051-64	6.84	174	4.30	109	5.93	151
1051-65	6.81	173	5.17	131	5.81	148
1051-66	6.81	173	6.39	162	5.85	148
*1051-68	6.80	173	8.64	219	6.29	160
*1051-86	9.12	232	6.38	162	6.23	158
1051-88	9.12	232	8.49	216	5.98	152
*1051-10-8	11.05	281	8.38	213	5.95	151
1051-1010	11.05	281	10.65	271	5.95	151
*1051-1210	13.00	330	10.75	273	6.49	165
1051-1212	13.00	330	12.38	314	6.24	158
*1051-1215	15.44	392	13.20	335	10.00	254
1051-1515	16.30	414	16.30	414	10.00	254
1051-1615	18.14	461	15.60	396	6.85	174
1051-1818	19.70	500	18.90	480	10.00	254
1051-2424	25.80	655	25.10	638	10.00	254



1055 Series - AC or Ductile Iron to AC or Ductile Iron

Part No.	A		B		C	
	in.	mm	in.	mm	in.	mm
1055-44	4.76	121	4.76	121	3.96	101
*1055-54	6.05	154	5.00	127	5.28	134
1055-55	6.00	152	5.86	149	4.91	125
*1055-63	6.81	173	3.38	86	5.56	141
1055-64	6.81	173	4.80	122	5.56	141
1055-65	6.84	174	5.89	150	5.88	149
1055-66	6.95	177	6.95	177	5.92	150
*1055-84	9.12	232	5.00	127	6.23	158
*1055-86	9.12	232	6.80	173	6.23	158
1055-88	9.05	230	9.05	230	5.98	152
*1055-10-8	11.05	281	9.05	230	5.95	151
1055-1010	10.86	276	10.86	276	5.91	150
*1055-12-8	13.00	330	9.05	230	6.24	158
*1055-1210	13.00	330	11.12	282	6.24	158
*1055-1512	16.80	427	13.20	335	10.00	254
1055-1515	16.30	414	16.30	414	10.00	254
*1055-1615	18.10	460	16.50	419	10.00	254

1055-1616	18.10	460	18.10	460	10.00	254
1055-1818	19.70	500	19.70	500	10.00	254
1055-2424	25.80	655	25.80	655	10.00	254
1055-2424	25.80	655	25.80	655	10.00	254



1056 Series - CI, PL, Copper, ST or Lead to CI, PL, Copper, ST or Lead

Part No.	A		B		C	
	in.	mm	in.	mm	in.	mm
1056-075	1.05	27	1.05	27	2.38	60
1056-100	1.31	33	1.31	33	2.40	61
1056-125	1.63	41	1.63	41	3.45	88
1056-150/125	1.94	49	1.63	41	3.45	88
1056-150	1.94	49	1.94	49	3.43	87
1056-215	2.41	61	1.84	47	3.39	86
1056-22	2.41	61	2.41	61	3.45	88
1056-300	2.95	75	2.95	75	2.70	69
1056-315	3.35	85	1.91	49	3.87	98
1056-32	3.52	89	2.38	60	3.96	101
1056-33	3.46	88	3.46	88	3.98	101
1056-415	4.40	112	1.91	49	3.96	101
1056-42	4.40	112	2.35	60	3.88	99
1056-43	4.46	113	3.52	89	4.03	102
1056-44	4.58	116	4.58	116	4.02	102
1056-53	5.61	142	3.53	90	3.90	99
1056-54	5.57	141	4.26	108	3.95	100
1056-55	5.52	140	5.52	140	3.97	101
*1056-63	6.61	168	3.38	86	5.75	146
1056-64	6.61	168	4.46	113	5.75	146
1056-65	6.48	165	5.46	139	5.77	147
1056-66	6.60	168	6.60	168	5.74	146
*1056-84	8.51	216	4.38	111	5.99	152
1056-86	8.51	216	6.38	162	5.99	152
1056-88	8.64	219	8.64	219	6.04	153
*1056-10-6	10.25	260	6.38	162	6.23	158
1056-10-8	10.25	260	8.42	214	5.98	152
1056-1010	10.63	270	10.63	270	5.89	150
*1056-12-8	12.50	318	8.38	213	6.62	168
1056-1210	12.50	318	10.65	271	6.37	162
1056-1212	12.52	318	12.52	318	6.32	161
1056-1512	15.75	400	12.25	311	5.71	145
1056-1515	15.44	392	15.44	392	10.00	254
*1056-1815	19.00	483	15.30	389	10.00	254
1056-1818	19.00	483	19.00	483	10.00	254
1056-2121	22.50	572	22.50	572	10.00	254
1056-2424	25.10	638	25.10	638	10.00	254
1056-2727	28.30	719	28.30	719	10.00	254

United States

PH: 810-503-9000

FX: 810-503-1015

fernco.com



Canada

PH: 519-332-6711

FX: 519-332-8610

fernco.ca

Flexible Coupling Part Number Chart

- **Cast Iron Soil Pipe**
 - Extra Heavy (XH)
 - Service Weight (SV)
 - No-Hub (NH)
- **Clay**
- **Concrete**

- **Plastic**
 - ABS / PVC (DWW Schedule 40, 80, 120) 4" - 12"
 - PVC / Sewer & Drain (ASTM D 3034) 4" - 15"
 - PVC Large Dia. Sewer Pipe (ASTM F 679) 18" - 48"
- **Steel**
- **Lead**

- **Copper**
- **Asbestos Cement Fibre**
- **Ductile Iron**
- **C 900** (Ductile Iron Pipe Size)
- **Corrugated** (Use 1070 Series)

*Designated part numbers come with an insert bushing.

SERIES	1001	1002	1003	1004	1005	1006	1051	1055	1056
PIPE SIZES	Clay TO Clay	Clay TO Cast Iron, Plastic, Copper, Steel or Lead	Clay TO Asbestos Cement Fibre or Ductile Iron	Concrete TO Concrete	Concrete TO Clay	Concrete TO Cast Iron, Plastic, Copper, Steel or Lead	Asbestos Cement Fibre or Ductile Iron TO Cast Iron, Plastic, Copper, Steel or Lead	Asbestos Cement Fibre or Ductile Iron TO Asbestos Cement Fibre or Ductile Iron	Cast Iron, Plastic, Copper, Steel or Lead TO Cast Iron, Plastic, Copper, Steel or Lead
4" to 2"		1002-42							1056-42
4" to 3"		1002-43				1006-43	1051-43*		1056-43
4" to 4"	1001-44	1002-44	1003-44	1004-44	1005-44*	1006-44	1051-44	1055-44	1056-44
4" to 6"		1002-46	1003-46			1006-46	1051-46		
5" to 3"									1056-53
5" to 4"	1001-54	1002-54*	1003-54*				1051-54	1055-54*	1056-54
5" to 5"	1001-55	1002-55	1003-55				1051-55	1055-55	1056-55
6" to 3"									1056-63*
6" to 4"	1001-64	1002-64	1003-64	1004-64*	1005-64*	1006-64	1051-64	1055-64	1056-64
6" to 5"	1001-65	1002-65	1003-65*			1006-65*	1051-65	1055-65	1056-65
6" to 6"	1001-66	1002-66	1003-66	1004-66	1005-66*	1006-66	1051-66	1055-66	1056-66
8" to 4"									1056-84*
8" to 5"			1003-85*						
8" to 6"	1001-86	1002-86	1003-86*	1004-86*	1005-86*	1006-86*	1051-86*	1055-86*	1056-86
8" to 8"	1001-88	1002-88	1003-88	1004-88	1005-88*	1006-88	1051-88	1055-88	1056-88
10" to 6"		1002-10-6*	1003-10-6*			1006-10-6*			1056-10-6*
10" to 8"	1001-10-8*	1002-10-8*	1003-10-8*	1004-10-8		1006-10-8*	1051-10-8*	1055-10-8*	1056-10-8
10" to 10"	1001-1010	1002-1010	1003-1010*	1004-1010	1005-1010	1006-1010	1051-1010	1055-1010	1056-1010
12" to 8"		1002-12-8*				1006-12-8*		1055-12-8*	1056-12-8*
12" to 10"	1001-1210	1002-1210*	1003-1210*	1004-1210*	1005-1210*	1006-1210*	1051-1210*	1055-1210*	1056-1210
12" to 12"	1001-1212	1002-1212	1003-1212	1004-1212	1005-1212*	1006-1212	1051-1212	1055-1212	1056-1212
15" to 10"	1001-1510*	1002-1510*	1003-1510*						
15" to 12"	1001-1512*	1002-1512*	1003-1512*		1005-1512*				1056-1512
15" to 15"	1001-1515	1002-1515	1003-1515*	1004-1515	1005-1515*	1006-1515			1056-1515
16" to 15"			1003-1516				1051-1615	1055-1615*	
18" to 15"									1056-1815*
18" to 18"	1001-1818	1002-1818	1003-1818*	1004-1818		1006-1818*	1051-1818	1055-1818	1056-1818
21" to 21"	1001-2121	1002-2121*		1004-2121		1006-2121*			1056-2121
24" to 24"	1001-2424	1002-2424*		1004-2424		1006-2424*			1056-2424
27" to 27"	1001-2727	1002-2727*		1004-2727		1006-2727*			1056-2727



Plastic Socket Couplings

Couplings fit neatly over plastic pipes and sockets, making socket-to-pipe and socket-to-socket connections incredibly easy and reliable. They can even be used with plastic traps.



1059 Series -
Plastic Socket to Plastic Pipe

Part No.	A		B		C	
	in.	mm	in.	mm	in.	mm
1059-150	2.26	57	1.97	50	3.90	99
*1059-215	2.69	68	1.90	48	3.91	99
1059-22	2.70	69	2.40	61	3.91	99
*1059-32	3.99	101	2.38	60	3.99	101
1059-33	3.99	101	3.49	89	3.99	101
*1059-42	5.01	127	2.38	60	3.99	101
*1059-43	5.01	127	3.38	86	3.99	101
1059-44	5.01	127	4.50	114	3.99	101



Socket-to-Pipe



Socket-to-Socket



1060 Series -
Plastic Socket to Plastic Socket

Part No.	A		B		C	
	in.	mm	in.	mm	in.	mm
1060-150	2.26	57	2.26	57	3.92	100
1060-22	2.70	69	2.70	69	3.95	100
1060-33	3.94	100	3.94	100	3.97	101
1060-44	5.01	127	5.01	127	3.97	101

Ultra-Rib™ Sewer Pipe Couplings



1072 Series -
ETI x Asbestos Cement or Ductile Iron

Part No.	A		B		C	
	in.	mm	in.	mm	in.	mm
1072-1212	14.00	356	14.00	356	9.89	251
1072-1515	16.80	427	16.80	427	9.89	251



1073 Series -
ETI x SDR-35 Plastic

Part No.	A		B		C	
	in.	mm	in.	mm	in.	mm
*1073-1212	14.00	356	12.25	311	9.89	251
*1073-1515	16.80	427	15.30	389	9.89	251

Corrugated Pipe Couplings



1070 Series -
ADS and Hancor Corrugated Polyethylene to Plastic Pipe

Part No.	A		B		C	
	in.	mm	in.	mm	in.	mm
*1070-32	3.57	91	2.38	60	3.96	101
1070-33	3.57	91	3.44	87	3.96	101
*1070-42	4.76	121	2.38	60	3.94	100
*1070-43	4.76	121	3.38	86	3.94	100
1070-44	4.76	121	4.29	109	3.94	100
*1070-63	6.83	173	3.38	86	5.91	150
*1070-64	6.83	173	4.38	111	5.91	150
*1070-65	6.83	173	5.50	140	5.91	150
1070-66	6.83	174	6.50	165	5.91	150
*1070-84	9.76	248	4.38	111	5.70	145
*1070-86	9.76	248	6.38	162	5.70	145
1070-88	9.76	248	8.42	214	5.70	145



*Designated part numbers come with an insert bushing.

United States

PH: 810-503-9000

FX: 810-503-1015

fernco.com



Canada

PH: 519-332-6711

FX: 519-332-8610

fernco.ca

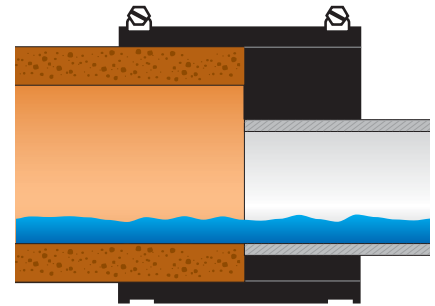
Eccentric Bushings/Couplings

Maintaining a continuous flowline in critical grade conditions.



EB TECHNICAL SPECS

- **Available for ALL** common sewer pipe materials and sizes
- Aligns the inside wall of the two pipes
- Meets ASTM C 1173 and D 5926
- 300 series stainless steel clamps



FLEXIBLE COUPLINGS

The following is a list of the more popular sewer pipe size / material combinations. Specific applications not listed here are available or can be custom ordered.

1002 EB Series - Clay to Cast Iron or Plastic

Part No.	Description
1002-42EB	Eccentric connection of 4" Clay to 2" CI or PL
1002-43EB	Eccentric connection of 4" Clay to 3" CI or PL
1002-44EB	Eccentric connection of 4" Clay to 4" CI or PL
1002-64EC	One piece eccentric connection of 6" Clay to 4" CI or PL
1002-1212EB	Eccentric connection of 12" Clay to 12" CI or PL
1002-1215EB	Eccentric connection of 12" Clay to 15" CI or PL
1002-1512EB	Eccentric connection of 15" Clay to 12" CI or PL
1002-1515EB	Eccentric connection of 15" Clay to 15" CI or PL

1006 EB Series - Concrete to Cast Iron or Plastic

Part No.	Description
1006-44EB	Eccentric connection of 4" Concrete to 4" CI or PL
1006-64EB	Eccentric connection of 6" Concrete to 4" CI or PL

1051 EB Series -

Asbestos Cement Fibre (AC) or Ductile Iron to Cast Iron or Plastic

Part No.	Description
1051-10-6EB	Eccentric connection of 10" AC or DI to 6" CI or PL
1051-10-8EB	Eccentric connection of 10" AC or DI to 8" CI or PL
1051-12-4EB	Eccentric connection of 12" AC or DI to 4" CI or PL
1051-12-6EB	Eccentric connection of 12" AC or DI to 6" CI or PL

1055 EB Series -

Asbestos Cement Fibre (AC) or Ductile Iron to AC or Ductile Iron

Part No.	Description
1055-86EB	Eccentric connection of 8" AC or DI to 6" AC or DI
1055-12-8EB	Eccentric connection of 12" AC or DI to 8" AC or DI

1056 EB Series - CI, PL, Copper, ST or Lead to CI, PL, Copper, ST or Lead

Part No.	Description
1056-315EB	Eccentric connection of 3" CI or PL to 1½" CI or PL
1056-32EB	Eccentric connection of 3" CI or PL to 2" CI or PL
1056-415EB	Eccentric connection of 4" CI or PL to 1½" CI or PL
1056-42EB	Eccentric connection of 4" CI or PL to 2" CI or PL
1056-43EB	Eccentric connection of 4" CI or PL to 3" CI or PL
1056-54EB	Eccentric connection of 5" CI or PL to 4" CI or PL
1056-6/150EB	Eccentric connection of 6" CI or PL to 1½" CI or PL
1056-62EB	Eccentric connection of 6" CI or PL to 2" CI or PL
1056-63EB	Eccentric connection of 6" CI or PL to 3" CI or PL
1056-64EB	Eccentric connection of 6" CI or PL to 4" CI or PL
1056-65EB	Eccentric connection of 6" CI or PL to 5" CI or PL
1056-83EB	Eccentric connection of 8" CI or PL to 3" CI or PL
1056-84EB	Eccentric connection of 8" CI or PL to 4" CI or PL
1056-85EB	Eccentric connection of 8" CI or PL to 5" CI or PL
1056-86EB	Eccentric connection of 8" CI or PL to 6" CI or PL
1056-10-4EB	Eccentric connection of 10" CI or PL to 4" CI or PL
1056-10-6EB	Eccentric connection of 10" CI or PL to 6" CI or PL
1056-10-8EB	Eccentric connection of 10" CI or PL to 8" CI or PL
1056-12-6EB	Eccentric connection of 12" CI or PL to 6" CI or PL
1056-12-8EB	Eccentric connection of 12" CI or PL to 8" CI or PL
1056-1210EB	Eccentric connection of 12" CI or PL to 10" CI or PL
1056-1512EB	Eccentric connection of 15" CI or PL to 12" CI or PL

When ordering Eccentric Bushings/Couplings, please provide the pipe sizes and materials being connected.