

AQUAGLASS SHOWER

MODEL NUMBER: **616036H-L/R**

60x36" Shower - Domed - seat left (Shown)

Dimensions: L59 7/8" x W36 3/8" x H79 1/2"

Weight: 183 lbs.

Standard Colors:

- 00 White
- 04 Biscuit
- 01 Bone
- 02 Dark Bone

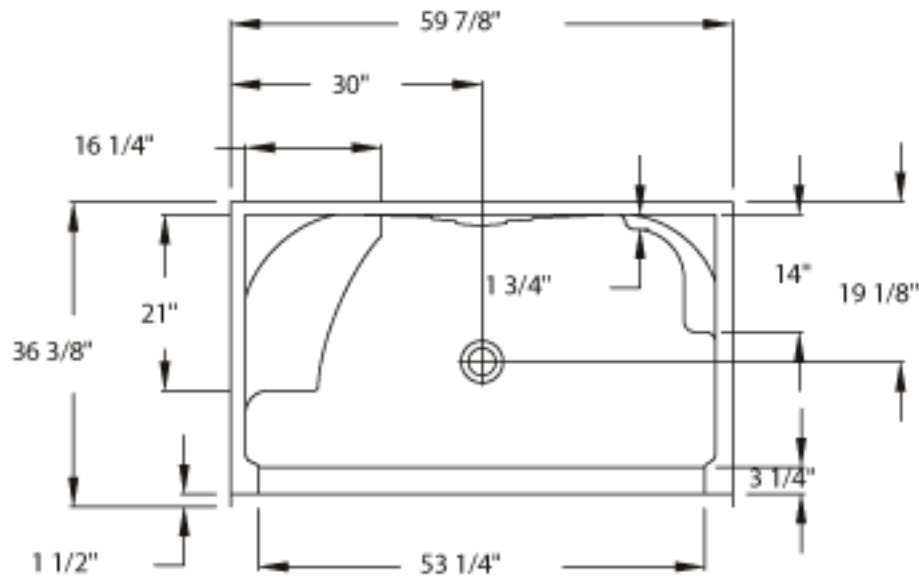


Standard Features

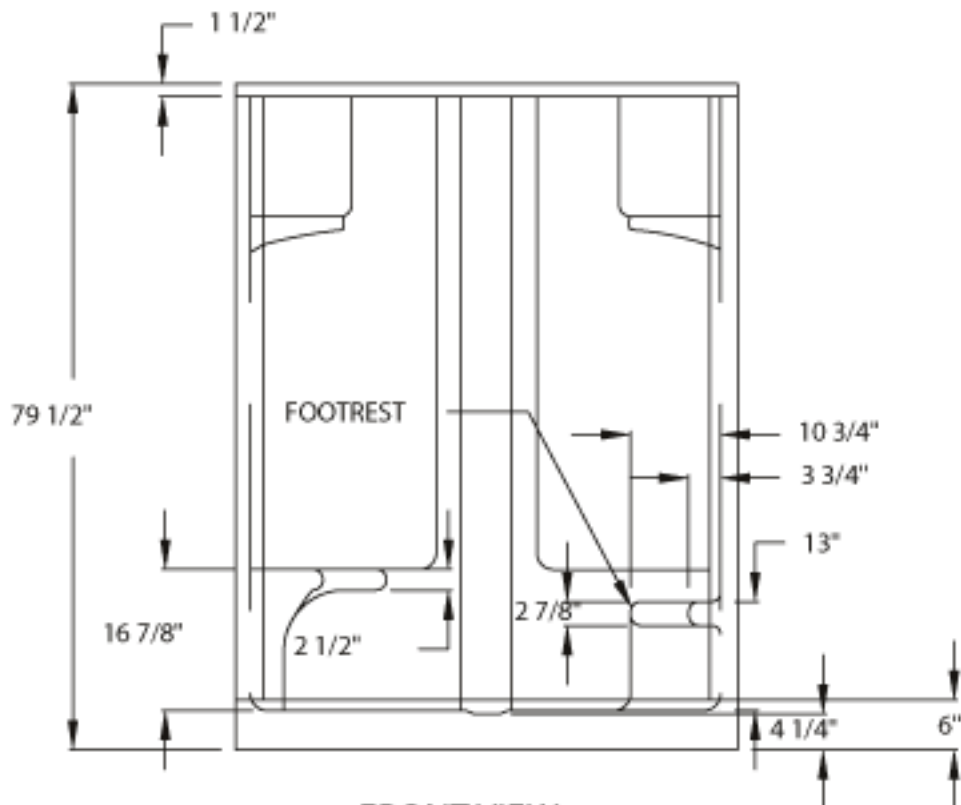
- Textured bottom
- Molded-in seat - opposite valve wall
- Nailing flange
- 2 Soap ledges/dishes
- Footrest on valve wall



INFORMATION IN THIS DRAWING IS
 SUBJECT TO CHANGE WITHOUT NOTICE.
 NO PART OF THIS DRAWING MAY BE
 REPRODUCED OR TRANSMITTED IN ANY
 FORM OR BY ANY MEANS, ELECTRONIC
 OR MECHANICAL, FOR ANY PURPOSE
 WITHOUT THE WRITTEN PERMISSION OF
 AQUA GLASS CORPORATION.




TOP VIEW



FRONT VIEW



SIDE VIEW

TOLERANCE: $\pm 1/4$ REV.: D SCO. NO.: 2497 SCO. DATE: 03/20/08	 320 INDUSTRIAL PARK RD. ADAMSVILLE, TN 38310	PRODUCT NO: 616036H-R/L PRODUCT NAME: DOMELESS ACRYLIC SHOWER	GENERAL NOTES: SHOWER DOOR OPENING: 53 1/4" X 72" NAILING FLANGES ARE ATTACHED WITH GLUE
--	--	--	--