



**Advanced Heating  
& Hot Water Systems**

# EVERLAST

## GRID-ENABLED

### 316L Stainless Steel

### Electric Water Heater

**For use as part of an electric thermal storage or demand response program**

These units feature a disconnect and they ship with the lower heating element disabled as required by the law regulating grid-enabled water heaters. The disconnect is unlocked with a key (included with the water heater).

**Premium Tank Construction for Long Life:**

- 316L stainless steel tank is lightweight and resists corrosion - No anode rods needed
- Titanium elements for best corrosion resistance
- Brass Inlet and Outlet Nipples with built-in heat traps and heavy duty foam insulation to minimize heat loss

**Simple and Fast Lockout Solution:**

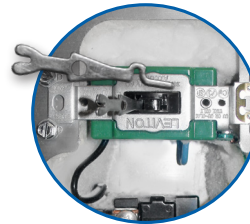
- Leaves factory with lower element assembly locked
- Can be unlocked in less than 30 seconds with included key
- Installs like a traditional electric water heater
- Can be configured for different operating voltages/inputs
- No new/unique software or controls are required
- Complies with Law 114-11 - The Energy Efficiency Improvement Act of 2015

**Standard Features:**

- Stainless Steel Tank with Heavy Duty Insulation
- Electrical Connection Box
- Industry Best Limited LIFETIME Warranty with Registration  
Ten (10) year warranty if not registered online

**In the Box:**

- T&P Relief Valve
- Installation Manual
- Brass Full Port Drain Valve
- Key



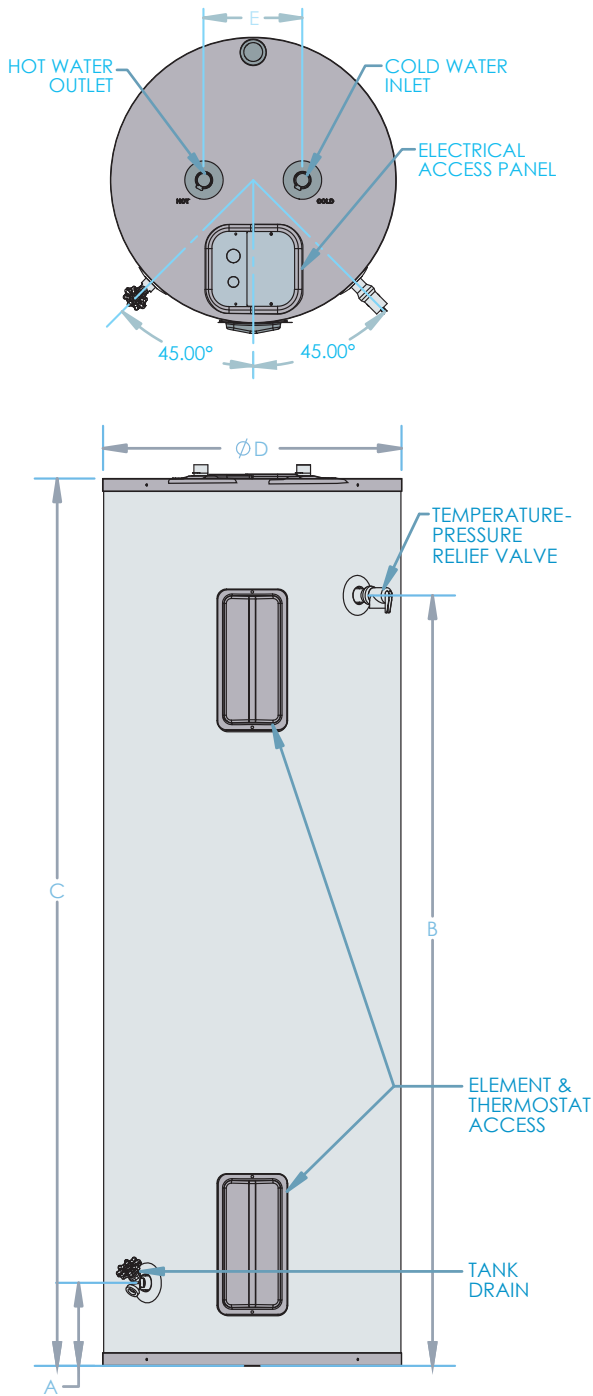
A Unique Key is Provided for Lower Element Activation

Grid-Enabled Models*	Wattage		Safety Listing	AHRI CERTIFIED® <small>www.ahridirectory.org</small>		First Hour Rating Bin	Recovery Efficiency	Recovery @ 90° F Rise	Shipping Weight
	240v	208v		UEF	First Hour Rating				
EVG080C2X045H	4500	3400	UL-174	.93	86 Gallons	High	98%	20 Gallons	151 lbs
EVG080C2X055H	5500	4100						25 Gallons	
EVG100C2X045H	4500	3400		.93	86 Gallons	High	98%	20 Gallons	206 lbs
EVG100C2X055H	5500	4100						25 Gallons	
EVG115C2X045H	4500	3400		.90	101 Gallons	High	98%	20 Gallons	224 lbs

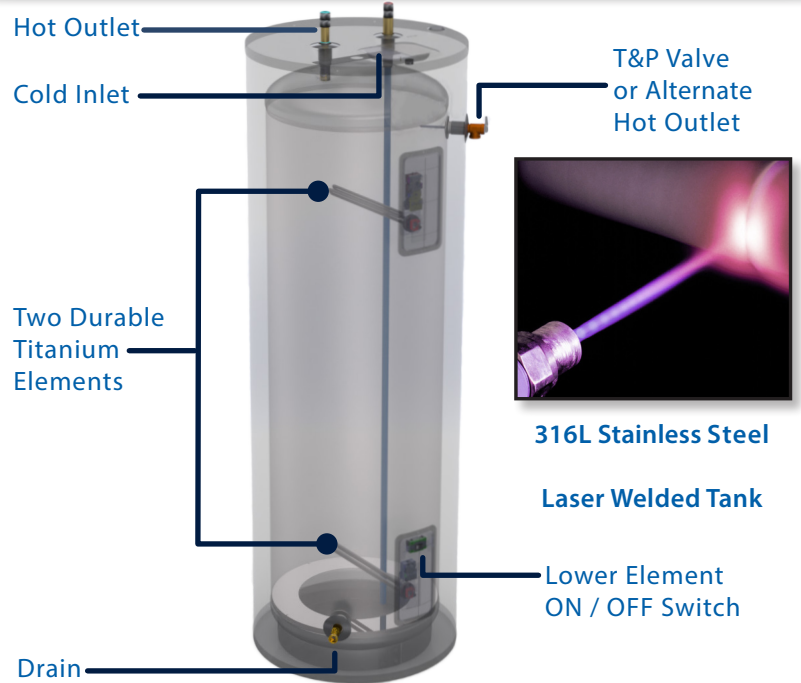
**SUSTAINABLE COMFORT FOR EVERYONE**



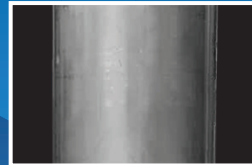
# Specifications



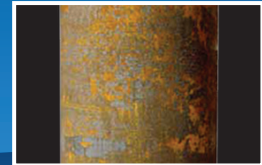
# A Closer Look



## The Advantages Stainless Steel VS Glass-Lined



**HTP's**  
Stainless Steel Tank  
Lightweight



**Top Competitor's**  
Glass-Lined Tank  
Very Heavy

- Minimizes Scale Build Up
- Prolongs Tank Life
- No Need for Anode Rods
- Lightweight Construction



### SPECIFICATIONS AND DIMENSIONS

### WATER TEMPERATURE RATINGS

Grid-Enabled Models*	Nominal Gallon	DOE Rated Storage Vol. (Gal)	A	B	C	D	E	Hot / Cold Inlets	Minimum Delivered Temp.	Maximum Delivered Temp.	High Temp. Limit
EVG080C2X045H	80	78	6.5"	60"	69"	23.25"	8"	¾" NPT	110°F 43.3°C	170°F 76.7°C	190°F 87.8°C
EVG080C2X055H											
EVG100C2X045H	100	96	7.25"	52"	61"	27"	8"	¾" NPT	110°F 43.3°C	170°F 76.7°C	190°F 87.8°C
EVG100C2X055H											
EVG115C2X045H	115	111	7.25"	60.25	70.5"	27"	8"	¾" NPT	110°F 43.3°C	170°F 76.7°C	190°F 87.8°C

\* Order without the "H" suffix for low temperature models with operating temperature range of 90°F -150°F