

## ZTR Series: **ZTR6200 and ZTR6203**

Top-Mounted, Battery-Powered Sensor Flush Valve



ZTR6200  
Water Closet



ZTR6203  
Urinal

### Features

- Sensor flush valve with smart sensor technology
- Solenoid-activated
- Piston-operated
- Adjustable sensor range
- Clog resistant filtered bypass piston kit
- All metal chrome-plated housing
- Dezincification resistant brass alloy
- Chloramine Resistant Internal Seals
- Mechanical override button
- Battery-powered, 4 AA's, with 3-year battery life
- 3-year Warranty

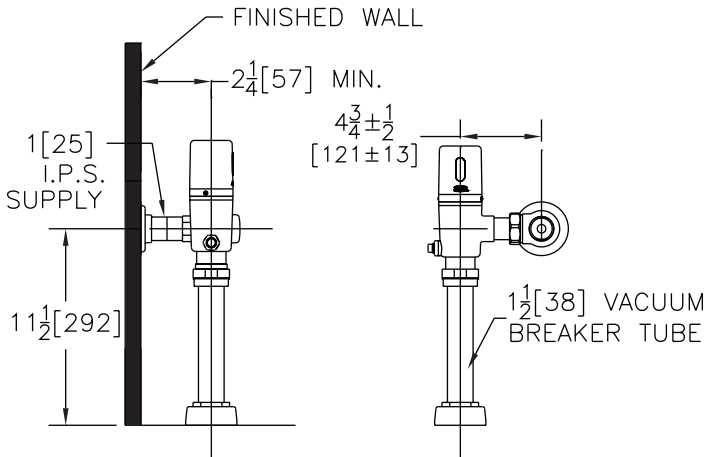
### Performance

- Zurn's most reliable and dependable sensor
- ZTR's piston performance produces precise and consistent gallons per flush
- Operating pressure ranges from 25-80 psi
- When matched with Zurn fixtures, ZTR offers a flushing system with repeatable evacuation and paired performance

# □ Top-Mounted, Battery-Powered Sensor Flush Valve

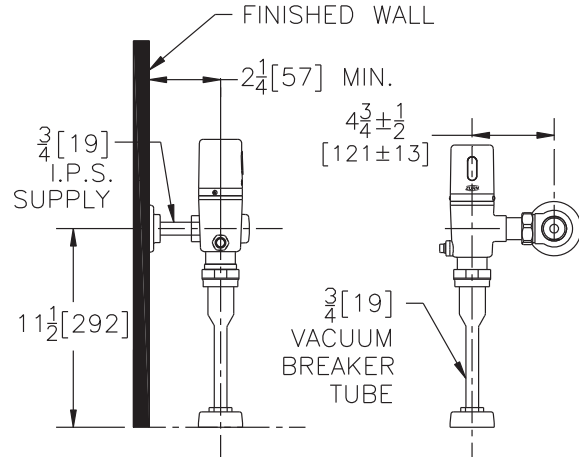
## Water Closets

ZTR6200-WS1 – 1.6 GPF  
ZTR6200EV – 1.28 GPF



## Urinals

ZTR6203-WS1 – 1.0 GPF  
ZTR6203EV-EWS – 0.5 GPF



The Zurn ZTR Sensor Flush Valve for water closets and urinals is performance engineered with the dual technology of the EcoVantage® Pint sensor and HydroVantage® piston innovation. The ZTR is equipped with state-of-the-art chloramine resistant internal seals which reduce maintenance costs and add to the longevity of the valve. When matched with Zurn fixtures, the ZTR paired performance delivers a repeatable flushing system with unsurpassed water savings. This complete suite of sensor flush valves is positioned to be the industry leader with a wide range of flow-rates, stylish design and advanced performance.

## ZTR Options

### ACCESSORIES

- YJ Split Ring Pipe Support
- YK Solid Ring Pipe Support
- YO Bumper on Angle Stop
- Other

### ENGINEERING SPECIFICATIONS:

Exposed chrome plated flushometer valve with a polished exterior.

- Filtered piston kit
- True manual override button
- Proprietary DR resistant brass alloy
- Power source
  - Sensor powered by 4 "AA" batteries
  - 3-year battery life on 48,000 activations per year
- Control stop
  - Internal siphon-guard protection
  - Vandal resistant stop cap
  - Sweat solder kit
  - Cast wall flange with setscrew
- High pressure vacuum breaker
- One piece hex coupling nut
- Internal seals and gaskets
  - Chloramine resistant
- Adjustable tailpiece
- Spud coupling and flange for top spud connection

**NOTE:** Performance guaranteed with Zurn EcoVantage® fixtures. Please consult Zurn Technical Services at 1-800-997-3876 to discuss the paired performance of this valve with other manufacturers' fixtures.



ZURN INDUSTRIES, LLC COMMERCIAL BRASS OPERATION

5900 ELWIN BUCHANAN DRIVE, SANFORD NC 27330, PHONE: 855-ONE ZURN • 855-663-9876, FAX: 919/775-3541 [www.zurn.com](http://www.zurn.com)

In Canada: ZURN INDUSTRIES LIMITED

3544 NASHUA DRIVE, MISSISSAUGA, ONTARIO L4V 1L2, PHONE: 905/405-8272, FAX: 905/405-1292

Form No. ZMKTG240-02, Rev. 8/12