

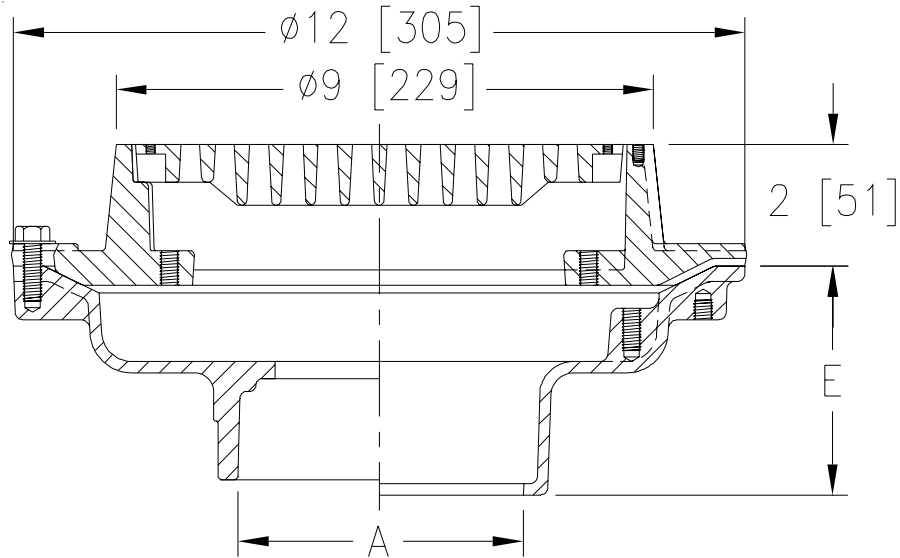


**Z550**

TAG \_\_\_\_\_

**9 [229] DIAMETER MEDIUM-DUTY DRAIN**

Dimensional Data (inches and [ mm ]) are Subject to Manufacturing Tolerances and Change Without Notice



A Pipe Size	Approx. Wt. Lbs. [kg]	Grate Open Area Sq. In. [cm <sup>2</sup> ]
2-3-4 [51-76-102]	28 [13]	18 [116]
6 [152]	30 [14]	

**ENGINEERING SPECIFICATION: ZURN Z550**

9 [229] Diameter top drain, Dura-Coated cast iron body with bottom outlet, seepage pan and combination membrane flashing clamp and frame for medium-duty, cast iron, heel-proof slotted grate.

**OPTIONS** (Check/specify appropriate options)

**PIPE SIZE**

- 2, 3, 4 [51, 76, 102]
- 2, 3, 4 [51, 76, 102]
- 2, 3, 4 [51, 76, 102]
- 2, 3, 4 [51, 76, 102]
- 6 [152]
- 2, 3, 4 [51, 76, 102]

**OUTLET**(Specify size/type)

- \_\_\_ IC Inside Caulk
- \_\_\_ IG Inside Gasket
- \_\_\_ IP Threaded
- \_\_\_ NH No-Hub
- \_\_\_ NH No-Hub
- \_\_\_ NL Neo-Loc

**'E' BODY HT. DIM.**

- 3-3/4 [95]
- 3-3/4 [95]
- 2-3/4 [70]
- 4-3/4 [121]
- 5-1/4 [133]
- 3-1/2 [89]

**PREFIXES**

- \_\_\_ Z D.C.C.I. Body and Top\*
- \_\_\_ ZB D.C.C.I. Body with Polished Bronze Top (Add 3/16 [5] to 2 [51] Dim. & 3/4 [20] to 9 [229] Dim.)
- \_\_\_ ZN D.C.C.I. Body with Polished Nickel Bronze Top (Add 3/16 [5] to 2 [51] Dim. & 3/4 [20] to 9 [229] Dim.)

**SUFFIXES**

- \_\_\_ -AR Acid Resisting Epoxy Coated Cast Iron
- \_\_\_ -C Underdeck Clamp
- \_\_\_ -D Dome Grate
- \_\_\_ -DF Deflector Grate
- \_\_\_ -DG Duresist Grate
- \_\_\_ -F Extension Frame (Specify Total Height Required)
- \_\_\_ -G Galvanized Cast Iron
- \_\_\_ -GG Galvanized Grate
- \_\_\_ -P Trap Primer Connection
- \_\_\_ -S Secondary Strainer
- \_\_\_ -SC Solid Cover
- \_\_\_ -SG Solid Gasketed Cover
- \_\_\_ -SS Stainless Mesh Liner for Bucket
- \_\_\_ -TC Neo-Loc Test Cap Gasket (2-4 [51-102] NL Bottom Outlet Only)
- \_\_\_ -TG Tractor Grate
- \_\_\_ -TS Top Secured with Slotted Screw
- \_\_\_ -V Backwater Valve (See Z1099)
- \_\_\_ -VP Vandal-Proof Secured Top
- \_\_\_ -Y Sediment Bucket
- \_\_\_ -90 90° Threaded Side Outlet Body (2 thru 4 [51 thru 102])

\*REGULARLY FURNISHED UNLESS OTHERWISE SPECIFIED

<b>REV. G</b>	<b>DATE: 11/17/10</b>	<b>C.N. NO. 120475</b>
<b>DWG. NO. 58947</b>	<b>PRODUCT NO. Z550</b>	