



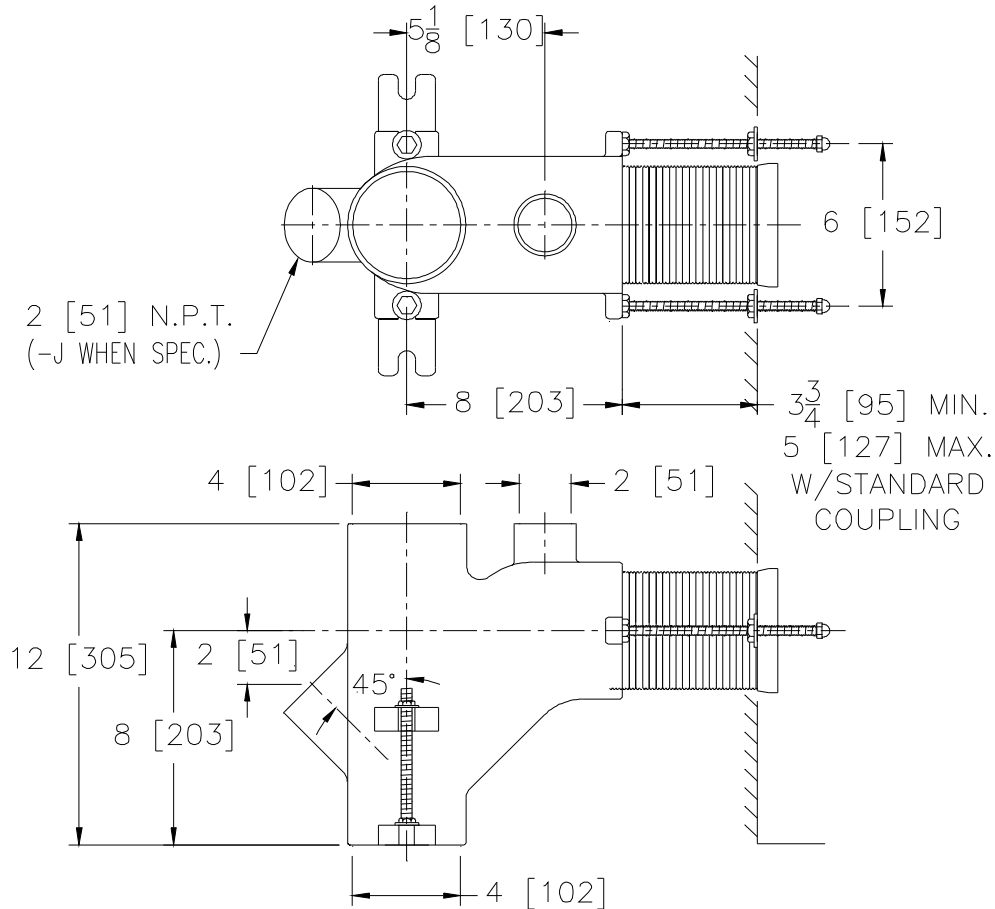
Z1214

SINGLE SYSTEM FOR FLOOR MOUNTED BACK OUTLET WATER CLOSET

SPECIFICATION SHEET

TAG _____

Dimensional Data (inches and [mm]) are Subject to Manufacturing Tolerances and Change Without Notice



Product No.	Approx. Wt. Lbs. [kg]
Z1214	28 [13]

ENGINEERING SPECIFICATION: ZURNZ1214

Dura-Coated cast iron No-Hub fitting for floor mounted back outlet water closets. Complete with corrosion resistant adjustable ABS coupling with integral test cap, fixture bolts and trim, and bonded "Neo-Seal" gasket.

OPTIONS (Check/specify appropriate options)

PREFIXES

- ___ Z D.C.C.I. No-Hub System with 4 [102] "ZZ" Coupling Connection*
- ___ ZQ D.C.C.I. No-Hub System with 4 [102] N.P.T. Coupling Connection

SUFFIXES

- | | |
|--|---|
| <ul style="list-style-type: none"> ___ -A Auxiliary Support Assembly (For off the floor closet) ___ -CC Corrosion Resistant Cast Iron Coupling (6 [152] to 12 [305]) ___ -CL Coupling Length Greater than 12 [305] (Specify Length Required) ___ -FO Main Fitting Only ___ -G Galvanized Cast Iron ___ -H Hub and Spigot Stack Connection ___ -J 45° Auxiliary Inlet ___ -PA Adjustable Coupling Connection for Penal Fixtures ___ -PB Coupling Connection for Penal Fixtures | <ul style="list-style-type: none"> ___ -PC Coupling Connection with 4 [102] Cleanout for Penal Fixtures ___ -PN NH Coupling Connection With 4 [102] Cleanout for Penal Fixture ___ -PP Anti-Glogging Pin In Plug (Includes either -PC or -PN; Please Specify) ___ -T Threaded Stack Connection ___ -VP Vandal Proof Trim ___ -29 Mechanical Test Cap Assembly ___ -61 Adjusting Wrench for "ZZ" Coupling |
|--|---|

REV. D	DATE: 11/19/10	C.N. NO. 120492
DWG. NO. 58846	PRODUCT NO. Z1214	

*REGULARLY FURNISHED UNLESS OTHERWISE SPECIFIED