

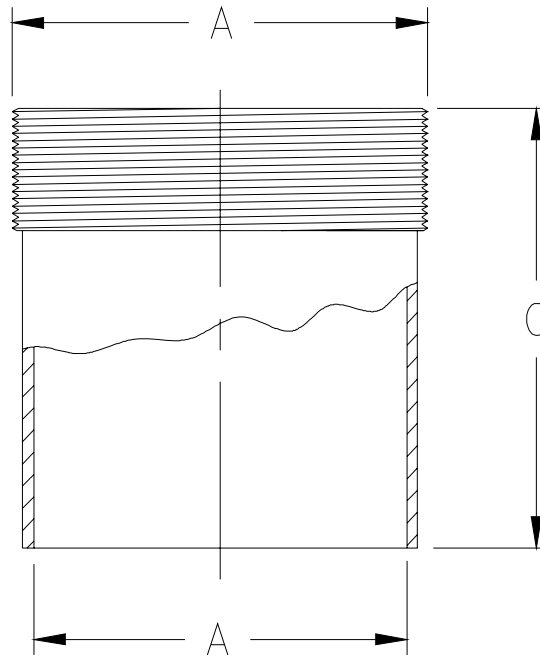


Z1040 NO-HUB ADAPTER

SPECIFICATION SHEET

TAG _____

Dimensional Data (inches and [mm]) are Subject to Manufacturing Tolerances and Change Without Notice



A Pipe Size Inches	C	Approx. Wt. Lbs. [kg]
2 [51]	3-1/2 [89]	1 [.5]
3 [76]	3-1/2 [89]	2 [1]
4 [102]	3-1/2 [89]	3 [1]
5 [127]	3-1/2 [89]	4 [2]
6 [152]	3-1/2 [89]	5 [2]
8 [203]	3-1/2 [89]	8 [4]
10 [254]	3-1/2 [89]	11 [6]
12 [305]	3-1/2 [89]	23 [10]

ENGINEERING SPECIFICATION: ZURN Z1040

No-Hub Adapter, Dura-Coated cast iron with male thread and No-Hub connections

CONNECTIONS (Check/specify appropriate options)

PIPE SIZE

(Specify size) **CONNECTION**

2 thru 6, 8, 10, 12 [51 thru 152, 203, 254, 305] ___ IP X NH Threaded x No-Hub

PREFIXES

___ Z D.C.C.I. Body*

SUFFIXES

___ -G Galvanized Cast Iron
 ___ -7 7 [178] Long Adapter

*REGULARLY FURNISHED UNLESS OTHERWISE SPECIFIED

REV. E	DATE: 11/01/10	C.N. NO. 120201
DWG. NO. 58897	PRODUCT NO. Z1040	