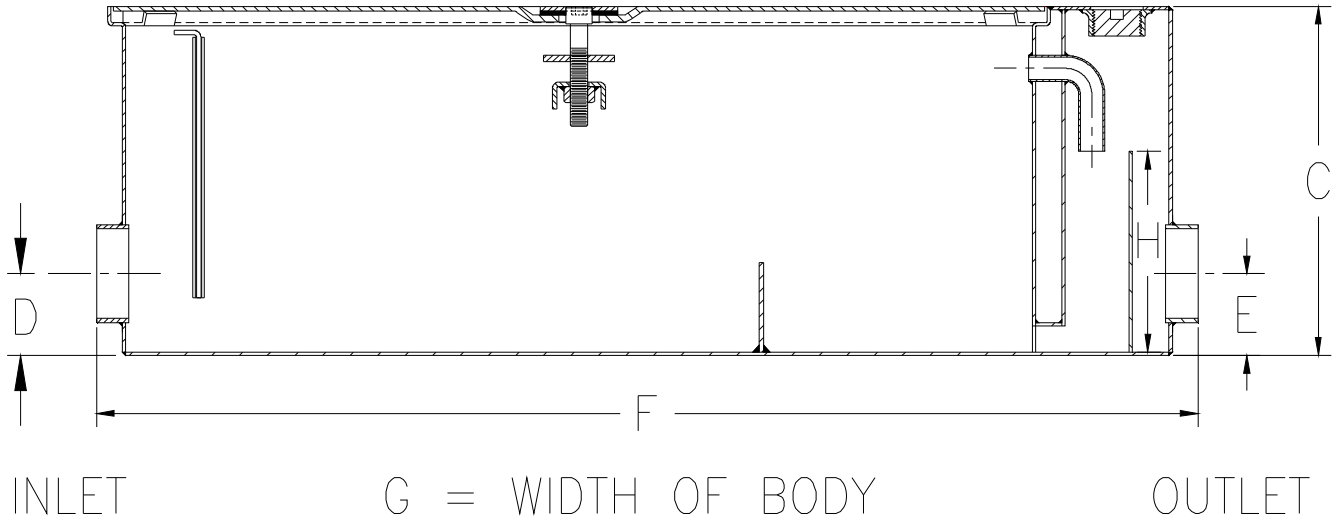


Dimensional Data (inches and [mm]) are Subject to Manufacturing Tolerances and Change Without Notice



Model #	Inlet/ Outlet Size**	Flow Rate G.P.M. [L]	Capacity		Approx. Wt. Lbs. [kg]	Dimension in Inches				
			Water Gal. [L]	Grease Lbs. [kg]		C	D/E	F	G	H
___GT2701-20	3 [76]	20 [76]	15 [57]	40 [18]	102 [46]	10 [254]	3 1/8 [79]	31 [787]	21 1/8 [536]	6 3/4 [171]
___GT2701-35	4 [102]	35 [132]	30 [114]	70 [32]	172 [78]	10 3/4 [273]	3 1/8 [79]	42 1/8 [1070]	29 3/8 [746]	7 [178]
___GT2701-50	4 [102]	50 [189]	45 [170]	100 [45]	210 [95]	16 [406]	10 [2540]	49 1/2 [1257]	29 3/8 [746]	10 [254]

GT2701 Grease Interceptor

Zurn Light Commercial Acid Resistant Coated interior and exterior fabricated steel low type grease interceptor, PDI rated at ___ GPM and ___ Lbs. grease capacity, with internal air relief by-pass, bronze cleanout plug and visible double wall trap seal with removable pressure equalizing/flow diffusing inlet baffle, fixed bottom outlet baffle, and visible double wall trap seal. Gasketed non-skid secured cover with center tie down assembly, complete with external flow control fitting. Regularly furnished with low inlet and outlet.

