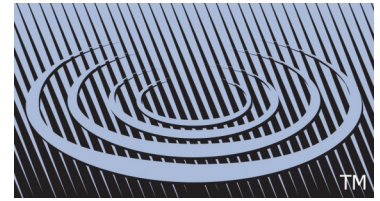


# Jackel



## 1-1/4" x 1-1/2" Sump Pump Check Valve



The DJ-545 was introduced in the mid-1970's and it is by far the world's most popular sump pump check valve with over 10 million installed!

The DJ-545 features Jackel's own 1-1/4" or 1-1/2" combination adapters and the industry's most durable check valve flapper.

This is one of the world's most reliable sump pump check valves.

### Specifications

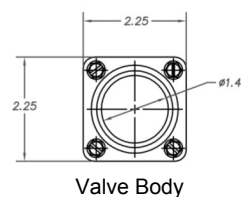
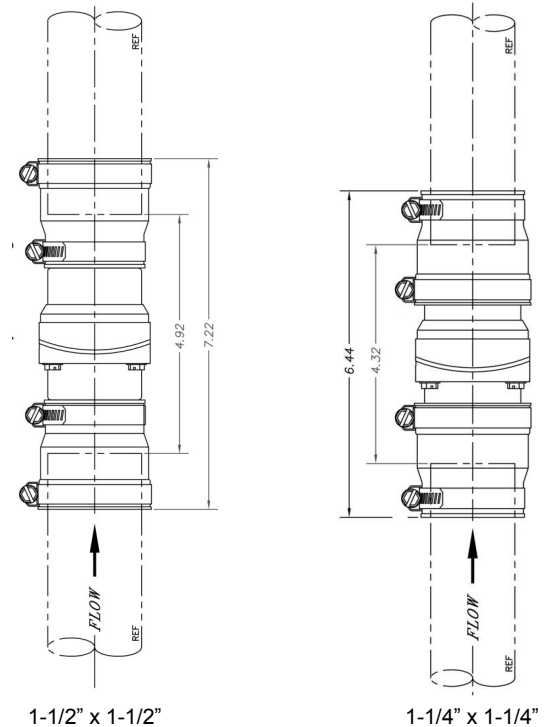
- **Valve Body:** Acrylonitrile butadiene styrene (ABS) thermoplastic
- **Adapters:** Flexible Polyvinyl chloride (PVC) thermoplastic
- **Clamps:** 301 Stainless Steel
- **Fasteners:** 301 Stainless Steel
- **Max. Operating Pressure:** 45 PSI

**Part Number: DJ-545**

### Features and Benefits

- Jackel's own 1-1/4" or 1-1/2" combination adapters
- Industry's most durable flapper
- All stainless steel clamps
- All stainless steel fasteners
- Strong, durable ABS body
- Fits 1-1/4" or 1-1/2" black, galvanized and DWV Schedule 40 pipe
- Millions in service

### Dimensions



© 2014 Jackel, Inc.  
DJ545PS, 01/14