

# HIGH-TEMPERATURE "FULL-FLOW" UNICHECKS

- 30-0214** 1 1/4" CAST IRON NPT
- 30-0215** 1 1/2" CAST IRON NPT
- 30-0216** 2" CAST IRON NPT



30-0214  
Pictured

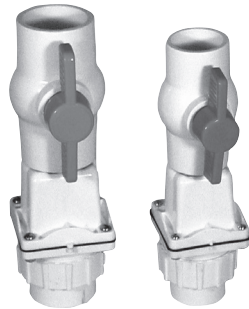


- Use with 2000 & 3000 series high-temperature pumps
- Vertical or horizontal installation
- Full-flow design, no restrictions
- Stops backflow of water
- Standard, 1/4", 1/2", 2" female NPT pipe
- EPDM strand-reinforced flapper, smooth-edge design, with cast iron and noncorrosive metal backing plates & stainless steel fastener.
- Corrosion-resistant powder coated epoxy finish
- Rated at 50 PSI (115 feet of head) at 200°F
- Stainless steel bolts
- 1 per carton
- Weight: 30-0214, 7.5 lbs.; 30-0215, 7.5 lbs.; 30-0216, 10 lbs.

## Tri-Check®

**30-0100**  
1 1/2" PVC CHECK VALVE / BALL VALVE  
UNION COMBINATION

**30-0101**  
2" PVC CHECK VALVE / BALL VALVE  
UNION COMBINATION



30-0101  
Pictured

30-0100  
Pictured

- Full-flow check valve design
- Threaded union allows pump to be removed without disrupting discharge piping.
- Saves time and money - easy to install
- Neoprene gasket and flapper, weighted with stainless steel backing plates and rivet
- Can be installed on vertical or horizontal pipe
- Meets plumbing codes requiring a ball valve installed in conjunction with a check valve.\*

## The "Combo"

**30-0102**  
1 1/2" PVC CHECK VALVE  
UNION COMBINATION

**30-0103**  
2" PVC CHECK VALVE  
UNION COMBINATION



30-0103  
Pictured

30-0102  
Pictured

- All stainless steel screws
- Replaceable flapper in the check valve
- Extra wide hinge to reduce stress
- Rated for 25 psi, 58 ft. of head
- 6 Per carton (30-0100 & 30-0101)
- 9 Per carton (30-0102 & 30-0103)

\*Consult Factory or local representative for state approvals

## INLINE CHECK VALVE

**30-0238** 1 1/2" INLINE CHECK VALVE

- Rubber coupling with stainless steel clamps
- Threads into pump discharge
- Pre-drilled weephole
- 4.3 PSI, 10 ft. of Head
- Vertical installation only



30-0238  
Pictured



**PUMP COMPANY**

MAIL TO: P.O. BOX 16347 • Louisville, KY 40256-0347  
SHIP TO: 3649 Cane Run Road • Louisville, KY 40211-1961  
(502) 778-2731 • 1 (800) 928-PUMP • FAX (502) 774-3624

Your Peace of Mind is Our Top Priority®

visit our web site:  
[www.zoeller.com](http://www.zoeller.com)