

**PFG - Commercial Boiler
Weil-McLain**



Gas
Water
MBH: 244-427
Combustion Eff.: 81%

Net Load Range
Hot Water
173,000 to 301,000 BTU/Hr.

- **COMPACT DESIGN AND HIGH EFFICIENCY**
- **EASY TO INSTALL AND SERVICE**
- **MADE WITH WEIL-McLAIN QUALITY**

APPLICATIONS INCLUDE:

Large Residential Homes
Apartment Buildings
Commercial Buildings
Institutional Buildings
Multiple Boilers
Indirect-fired Water Heating
... And Much More



WEIL-McLAIN

www.weil-mclain.com

Model	C.S.A. Input (MBH)	C.S.A. Gross Output (MBH)	Net I=B=R Water Rating (MBH)**	I=B=R Chimney Size	Approx. Shipping Weight (Lbs)
PFG-5-PIDN	244	199*	173	7" I.D. × 20'	507
PFG-6-▲	305	247	215	8" I.D. × 20'	575
PFG-7-▲	366	296	257	9" I.D. × 20'	635
PFG-8R***	400	324	282	9" I.D. × 20'	695
PFG-8-PIN	427	346	301	9" I.D. × 20'	695

Notes:

▲ Add "SPN" for standing pilot or "PIN" for intermittent ignition.

* DOE heating capacity in MBH/Hr. based on standard test procedures prescribed by the United States Department of Energy. PFG-5 AFUE—81%.

** Net I=B=R ratings are based on net installed radiation of sufficient quantity for the requirements of the building and nothing need be added for normal piping and pickup. Ratings are based on a piping and pickup allowance of 115. An additional allowance should be made for unusual piping and pickup loads. Ratings shown are for elevations up to 2,000 feet. For elevations above 2,000 feet, ratings should be reduced at the rate of 4% for each 1,000 feet above sea level.

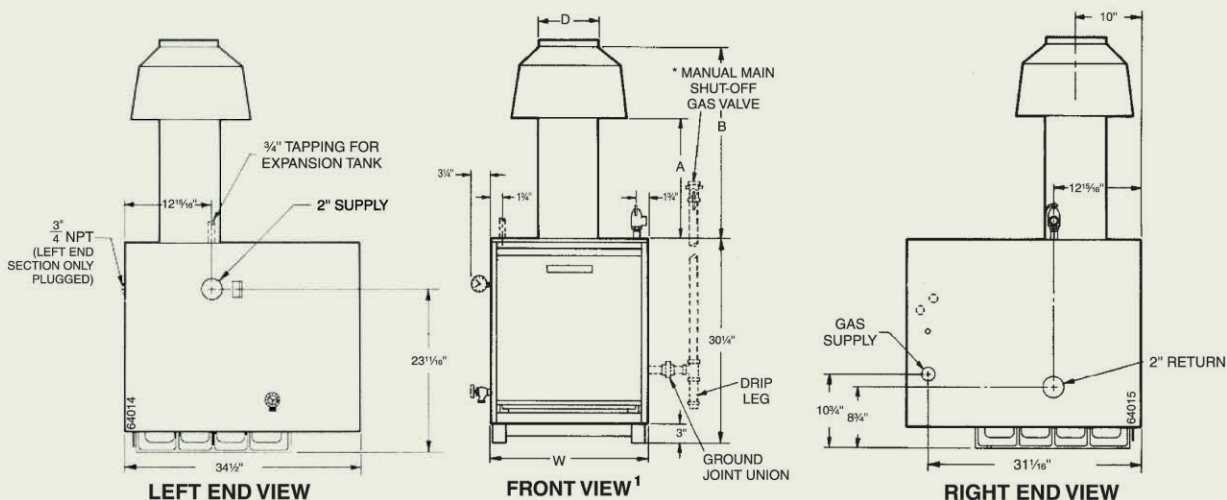
***Reduced Input.

NOTE: Boilers tested for 50 P.S.I. working pressure. C.S.A. design certified for installation on non-combustible flooring only.

Dimensions

Model	Size		Gas Connection Size Natural & Propane	Draft Hood Outlet Size	Outside Dimension of Crate		
	Supply	Returns			Length	Width	Height
PFG-5-PIDN	11 1/2"	11 1/2"	3/4"	7"	38 3/8"	25"	33 1/2"
PFG-6-▲	2"	2"	3/4"	8"	38 3/8"	25"	33 1/2"
PFG-7-▲	2"	2"	3/4"	9"	38 3/8"	31"	33 1/2"
PFG-8R	2"	2"	1"	9"	38 3/8"	31"	33 1/2"
PFG-8-PIN	2"	2"	1"	9"	38 3/8"	31"	33 1/2"

	Dimensions in inches ¹			
Model	A	B	D	W
PFG-5	15	23 3/4"	7	17 11/16"
PFG-6-▲	17 1/4"	27 1/16"	8	20 11/16"
PFG-7-▲	19 1/2"	30 3/8"	9	23 11/16"
PFG-8R	25	35 7/8"	9	26 11/16"
PFG-8	25	35 7/8"	9	26 11/16"



Standard and Additional Equipment

Standard Equipment:

Factory Tested
Insulated Extended Jacket
Built-in Air Separator
Vertical Draft Hood (packed separately)
Automatic Vent Damper (PFG-5 only)
Radiation Plates
Combination Gas Valve for 24 Volt
Constant Burning, Thermally Supervised
Pilot System and Thermocouple
(PFG-6 and 7 only)
Intermittent Electronic Ignition System
(PFG-5 And 8 Only)
Non-Linting Pilot Burner

Aluminized Steel Burners
Combination Relay Receptacle and
40 VA Transformer
Electronic Junction Box
Plug-in Circulator Relay
Spill Switch (PFG-5 only)
Rollout Thermal Fuse Element
(PFG-5 only)
High-Limit Temperature Control
30 PSI ASME Relief Valve (Boiler
sections tested for 50 PSI working
Pressure) Packed Separately
Combination Pressure-Temperature
Gauge (packed separately)
Drain Valve (Packed Separately)

Additional Equipment:

Intermittent Electronic Ignition
Pilot System for PFG-6 and 7
(standard for PFG-5 and 8)
Automatic Vent Damper for
PFG-6 thru 8 (standard for PFG-5)
Gas Conversion Kits



In the interest of continual improvements in product and performance, Weil-McLain reserves the right to change specifications without notice.

C-513 (1009)