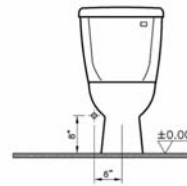
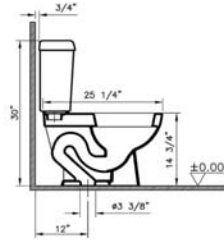
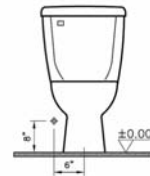
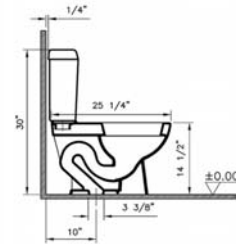


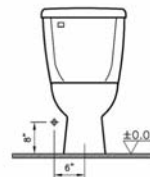
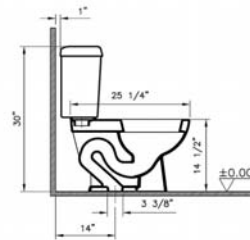
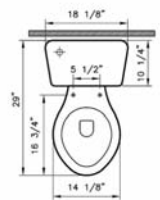
Technical Drawing



6853BXXX-XXXX




5054BXXX-XXXX



5055BXXX-XXXX

Atlantis Toilets

VitrA

Product	Product Code	Description	White Color USD	Cubes (cu.ft.)	Approx Weight (lbs)
	5051BXXX-0101	Atlantis two-piece toilet, 1.6 gpf (ELONGATED bowl) (BOWL ONLY)	144	3.4	45
	6853BXXX-5347 6853BXXX-5237	Tank (white plastic trim lever on left hand side) 12" rough-in (fluidmaster fill valve) 12" rough in	111 121	1.8 1.8	35 35
	6853BXXX-5348 6853BXXX-5238	Tank (chrome plated trim lever on left hand side) 12" rough-in (fluidmaster fill valve) 12" rough in	111 121	1.8 1.8	35 35
	6853BXXX-5349 6853BXXX-5239	Tank (white plastic trim lever on left hand side) 12" rough-in (styrofoam lined) (fluidmaster fill valve) 12" rough in (styrofoam lined)	131 141	1.8 1.8	35 35
	6853BXXX-5350 6853BXXX-5240	Tank (chrome plated trim lever on left hand side) 12" rough-in (styrofoam lined) (fluidmaster fill valve) 12" rough in (styrofoam lined)	131 141	1.8 1.8	35 35
	6853BXXX-5351 6853BXXX-5241	Tank (white plastic trim lever on right hand side) 12" rough-in (fluidmaster fill valve) 12" rough in	111 121	1.8 1.8	35 35
	6853BXXX-5352 6853BXXX-5242	Tank (chrome plated trim lever on right hand side) 12" rough-in (fluidmaster fill valve) 12" rough in	111 121	1.8 1.8	35 35
	5054BXXX-5357 5054BXXX-5247	Tank (white plastic trim lever on left hand side) 10" rough-in (fluidmaster fill valve) 10" rough in	137 147	1.8 1.8	33 33
	5054BXXX-5358 5054BXXX-5248	Tank (chrome plated trim lever on left hand side) 10" rough-in (fluidmaster fill valve) 10" rough in	137 147	1.8 1.8	33 33
	5055BXXX-5359 5055BXXX-5249	Tank (white plastic trim lever on left hand side) 14" rough-in (fluidmaster fill valve) 14" rough in	137 147	1.8 1.8	41 41
	5055BXXX-5360 5055BXXX-5250	Tank (chrome plated trim lever on left hand side) 14" rough-in (fluidmaster fill valve) 14" rough in	137 147	1.8 1.8	41 41
	5055BXXX-5363 5055BXXX-5253	Tank (white plastic trim lever on left hand side) 14" rough-in (styrofoam lined) (fluidmaster fill valve) 14" rough in (styrofoam lined)	157 167	1.8 1.8	41 41
	5055BXXX-5364 5055BXXX-5254	Tank (chrome plated trim lever on left hand side) 14" rough-in (styrofoam lined) (fluidmaster fill valve) 14" rough in (styrofoam lined)	157 167	1.8 1.8	41 41
	5055BXXX-5367 5055BXXX-5257	Tank (white plastic trim lever on right hand side) 14" rough-in (fluidmaster fill valve) 14" rough in	137 147	1.8 1.8	41 41
	5055BXXX-5368 5055BXXX-5258	Tank (chrome plated trim lever on right hand side) 14" rough-in (fluidmaster fill valve) 14" rough in	137 147	1.8 1.8	41 41

- 10 year warranty is offered only for plumbing fixtures. • 2 year warranty is offered for the toilet seats and bathroom furniture.
- "XXX" indicates the color. The color surcharge is an additional 20 % for basic colors of the product's price.
For basic and special colors offered for each suite, refer to page no. 62
- VitrAclean glazing surcharge is \$79 per product. VitrAhygiene glazing surcharge is \$79 per product.

Colors

VitrA

Plumbing Fixtures



	003 White	017 Bone*	068 Biscuit**
Corina	•	•	•
EverGreen	•	•	•
Atlantis	•	•	•

- The color surcharge is an additional 20% for basic colors of the product's price.
- Basic colors : 017 Bone, 068 Biscuit
- The first zero of the color codes should be replaced for ordering VitrAclean and/or VitrAhygiene.
- VitrAclean : 4xx
- VitrAhygiene : 6xx
- VitrAclean & VitrAhygiene: 7xx

* New orders from the factory require a minimum order quantity of 10 pcs per product.

** New orders from the factory require a minimum order quantity of 5 pcs per product.