
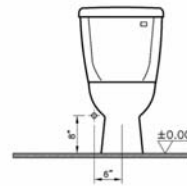
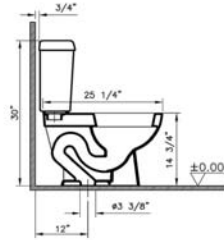


# Atlantis Toilets

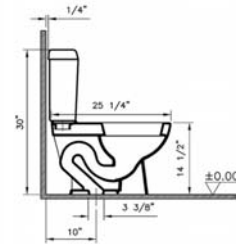
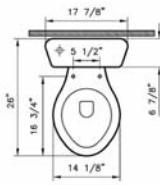
Product	Product Code	Description	White Color USD	Cubes (cu.ft.)	Approx Weight (lbs)
	5050BXXX-0101	<b>Atlantis two-piece toilet, 1.6 gpf</b> (ROUND FRONT bowl) (BOWL ONLY)	<b>112</b>	3.5	44
		<b>Tank</b> (white plastic trim lever on left hand side)			
	6853BXXX-5347	12" rough-in	<b>111</b>	1.8	35
	6853BXXX-5237	(fluidmaster fill valve) 12" rough in	<b>121</b>	1.8	35
		<b>Tank</b> (chrome plated trim lever on left hand side)			
	6853BXXX-5348	12" rough-in	<b>111</b>	1.8	35
	6853BXXX-5238	(fluidmaster fill valve) 12" rough in	<b>121</b>	1.8	35
		<b>Tank</b> (white plastic trim lever on left hand side)			
	6853BXXX-5349	12" rough-in (styrofoam lined)	<b>131</b>	1.8	35
	6853BXXX-5239	(fluidmaster fill valve) 12" rough in (styrofoam lined)	<b>141</b>	1.8	35
		<b>Tank</b> (chrome plated trim lever on left hand side)			
	6853BXXX-5350	12" rough-in (styrofoam lined)	<b>131</b>	1.8	35
	6853BXXX-5240	(fluidmaster fill valve) 12" rough in (styrofoam lined)	<b>141</b>	1.8	35
		<b>Tank</b> (white plastic trim lever on right hand side)			
	6853BXXX-5351	12" rough-in	<b>111</b>	1.8	35
	6853BXXX-5241	(fluidmaster fill valve) 12" rough in	<b>121</b>	1.8	35
		<b>Tank</b> (chrome plated trim lever on right hand side)			
	6853BXXX-5352	12" rough-in	<b>111</b>	1.8	35
	6853BXXX-5242	(fluidmaster fill valve) 12" rough in	<b>121</b>	1.8	35
		<b>Tank</b> (white plastic trim lever on left hand side)			
	5054BXXX-5357	10" rough-in	<b>137</b>	1.8	33
	5054BXXX-5247	(fluidmaster fill valve) 10" rough in	<b>147</b>	1.8	33
		<b>Tank</b> (chrome plated trim lever on left hand side)			
	5054BXXX-5358	10" rough-in	<b>137</b>	1.8	33
	5054BXXX-5248	(fluidmaster fill valve) 10" rough in	<b>147</b>	1.8	33
		<b>Tank</b> (white plastic trim lever on left hand side)			
	5055BXXX-5359	14" rough-in	<b>137</b>	1.8	41
	5055BXXX-5249	(fluidmaster fill valve) 14" rough in	<b>147</b>	1.8	41
		<b>Tank</b> (chrome plated trim lever on left hand side)			
	5055BXXX-5360	14" rough-in	<b>137</b>	1.8	41
5055BXXX-5250	(fluidmaster fill valve) 14" rough in	<b>147</b>	1.8	41	
	<b>Tank</b> (white plastic trim lever on left hand side)				
5055BXXX-5363	14" rough-in (styrofoam lined)	<b>157</b>	1.8	41	
5055BXXX-5253	(fluidmaster fill valve) 14" rough in (styrofoam lined)	<b>167</b>	1.8	41	
	<b>Tank</b> (chrome plated trim lever on left hand side)				
5055BXXX-5364	14" rough-in (styrofoam lined)	<b>157</b>	1.8	41	
5055BXXX-5254	(fluidmaster fill valve) 14" rough in (styrofoam lined)	<b>167</b>	1.8	41	
	<b>Tank</b> (white plastic trim lever on right hand side)				
5055BXXX-5367	14" rough-in	<b>137</b>	1.8	41	
5055BXXX-5257	(fluidmaster fill valve) 14" rough in	<b>147</b>	1.8	41	
	<b>Tank</b> (chrome plated trim lever on right hand side)				
5055BXXX-5368	14" rough-in	<b>137</b>	1.8	41	
5055BXXX-5258	(fluidmaster fill valve) 14" rough in	<b>147</b>	1.8	41	

- 10 year warranty is offered only for plumbing fixtures. • 2 year warranty is offered for the toilet seats and bathroom furniture.
- "XXX" indicates the color. The color surcharge is an additional 20 % for basic colors of the product's price.  
For basic and special colors offered for each suite, refer to page no. 62
- VitrAclean glazing surcharge is \$79 per product. VitrAhygiene glazing surcharge is \$79 per product.

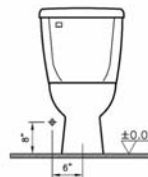
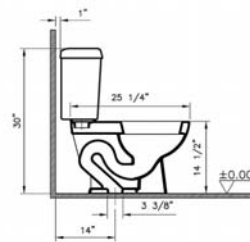
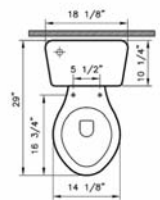
Technical Drawing



6853BXXX-XXXX




5054BXXX-XXXX



5055BXXX-XXXX

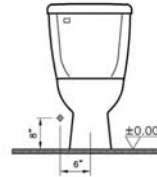
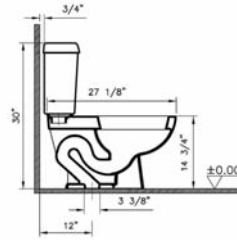
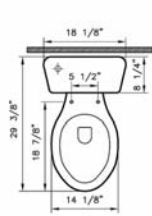
# Atlantis Toilets

# VitrA

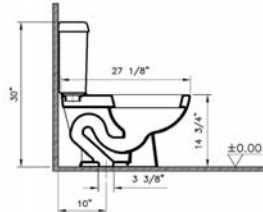
Product	Product Code	Description	White Color USD	Cubes (cu.ft.)	Approx Weight (lbs)
	5051BXXX-0101	<b>Atlantis two-piece toilet, 1.6 gpf</b> (ELONGATED bowl) (BOWL ONLY)	<b>144</b>	3.4	45
	6853BXXX-5347 6853BXXX-5237	<b>Tank</b> (white plastic trim lever on left hand side) 12" rough-in (fluidmaster fill valve) 12" rough in	<b>111</b> <b>121</b>	1.8 1.8	35 35
	6853BXXX-5348 6853BXXX-5238	<b>Tank</b> (chrome plated trim lever on left hand side) 12" rough-in (fluidmaster fill valve) 12" rough in	<b>111</b> <b>121</b>	1.8 1.8	35 35
	6853BXXX-5349 6853BXXX-5239	<b>Tank</b> (white plastic trim lever on left hand side) 12" rough-in (styrofoam lined) (fluidmaster fill valve) 12" rough in (styrofoam lined)	<b>131</b> <b>141</b>	1.8 1.8	35 35
	6853BXXX-5350 6853BXXX-5240	<b>Tank</b> (chrome plated trim lever on left hand side) 12" rough-in (styrofoam lined) (fluidmaster fill valve) 12" rough in (styrofoam lined)	<b>131</b> <b>141</b>	1.8 1.8	35 35
	6853BXXX-5351 6853BXXX-5241	<b>Tank</b> (white plastic trim lever on right hand side) 12" rough-in (fluidmaster fill valve) 12" rough in	<b>111</b> <b>121</b>	1.8 1.8	35 35
	6853BXXX-5352 6853BXXX-5242	<b>Tank</b> (chrome plated trim lever on right hand side) 12" rough-in (fluidmaster fill valve) 12" rough in	<b>111</b> <b>121</b>	1.8 1.8	35 35
	5054BXXX-5357 5054BXXX-5247	<b>Tank</b> (white plastic trim lever on left hand side) 10" rough-in (fluidmaster fill valve) 10" rough in	<b>137</b> <b>147</b>	1.8 1.8	33 33
	5054BXXX-5358 5054BXXX-5248	<b>Tank</b> (chrome plated trim lever on left hand side) 10" rough-in (fluidmaster fill valve) 10" rough in	<b>137</b> <b>147</b>	1.8 1.8	33 33
	5055BXXX-5359 5055BXXX-5249	<b>Tank</b> (white plastic trim lever on left hand side) 14" rough-in (fluidmaster fill valve) 14" rough in	<b>137</b> <b>147</b>	1.8 1.8	41 41
	5055BXXX-5360 5055BXXX-5250	<b>Tank</b> (chrome plated trim lever on left hand side) 14" rough-in (fluidmaster fill valve) 14" rough in	<b>137</b> <b>147</b>	1.8 1.8	41 41
	5055BXXX-5363 5055BXXX-5253	<b>Tank</b> (white plastic trim lever on left hand side) 14" rough-in (styrofoam lined) (fluidmaster fill valve) 14" rough in (styrofoam lined)	<b>157</b> <b>167</b>	1.8 1.8	41 41
	5055BXXX-5364 5055BXXX-5254	<b>Tank</b> (chrome plated trim lever on left hand side) 14" rough-in (styrofoam lined) (fluidmaster fill valve) 14" rough in (styrofoam lined)	<b>157</b> <b>167</b>	1.8 1.8	41 41
	5055BXXX-5367 5055BXXX-5257	<b>Tank</b> (white plastic trim lever on right hand side) 14" rough-in (fluidmaster fill valve) 14" rough in	<b>137</b> <b>147</b>	1.8 1.8	41 41
	5055BXXX-5368 5055BXXX-5258	<b>Tank</b> (chrome plated trim lever on right hand side) 14" rough-in (fluidmaster fill valve) 14" rough in	<b>137</b> <b>147</b>	1.8 1.8	41 41

- 10 year warranty is offered only for plumbing fixtures. • 2 year warranty is offered for the toilet seats and bathroom furniture.
- "XXX" indicates the color. The color surcharge is an additional 20 % for basic colors of the product's price.  
For basic and special colors offered for each suite, refer to page no. 62
- VitraClean glazing surcharge is \$79 per product. VitraHygiene glazing surcharge is \$79 per product.

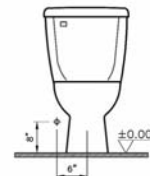
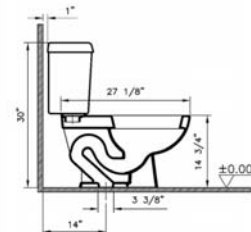
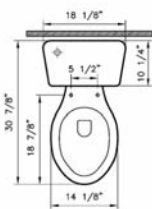
Technical Drawing



6853BXXX-XXXX





5054BXXX-XXXX



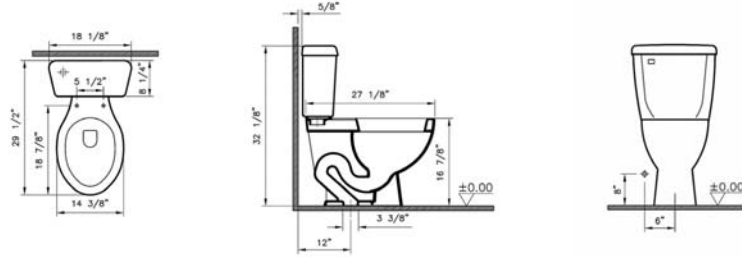
5055BXXX-XXXX

# Atlantis Toilets

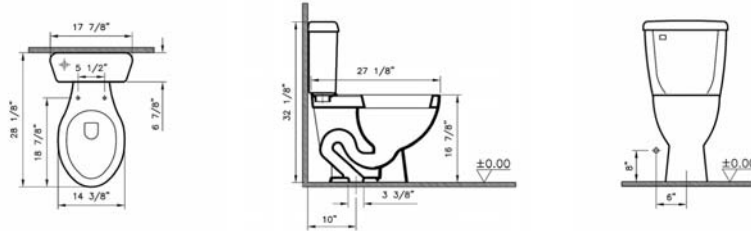
Product	Product Code	Description	White Color USD	Cubes (cu.ft.)	Approx Weight (lbs)
 	5052BXXX-0075	<b>Atlantis two-piece toilet, 1.6 gpf</b> (ELONGATED bowl) (BOWL ONLY) <b>ADA Compliant</b>	<b>229</b>	4.4	53
	6853BXXX-5347	<b>Tank</b> (white plastic trim lever on left hand side) 12" rough-in	<b>111</b>	1.8	35
	6853BXXX-5237	(fluidmaster fill valve) 12" rough in	<b>121</b>	1.8	35
	6853BXXX-5348	<b>Tank</b> (chrome plated trim lever on left hand side) 12" rough-in	<b>111</b>	1.8	35
	6853BXXX-5238	(fluidmaster fill valve) 12" rough in	<b>121</b>	1.8	35
	6853BXXX-5349	<b>Tank</b> (white plastic trim lever on left hand side) 12" rough-in (styrofoam lined)	<b>131</b>	1.8	35
	6853BXXX-5239	(fluidmaster fill valve) 12" rough in (styrofoam lined)	<b>141</b>	1.8	35
	6853BXXX-5350	<b>Tank</b> (chrome plated trim lever on left hand side) 12" rough-in (styrofoam lined)	<b>131</b>	1.8	35
	6853BXXX-5240	(fluidmaster fill valve) 12" rough in (styrofoam lined)	<b>141</b>	1.8	35
	6853BXXX-5351	<b>Tank</b> (white plastic trim lever on right hand side) 12" rough-in	<b>111</b>	1.8	35
	6853BXXX-5241	(fluidmaster fill valve) 12" rough in	<b>121</b>	1.8	35
	6853BXXX-5352	<b>Tank</b> (chrome plated trim lever on right hand side) 12" rough-in	<b>111</b>	1.8	35
	6853BXXX-5242	(fluidmaster fill valve) 12" rough in	<b>121</b>	1.8	35
	5054BXXX-5357	<b>Tank</b> (white plastic trim lever on left hand side) 10" rough-in	<b>137</b>	1.8	33
	5054BXXX-5247	(fluidmaster fill valve) 10" rough in	<b>147</b>	1.8	33
	5054BXXX-5358	<b>Tank</b> (chrome plated trim lever on left hand side) 10" rough-in	<b>137</b>	1.8	33
	5054BXXX-5248	(fluidmaster fill valve) 10" rough in	<b>147</b>	1.8	33
	5055BXXX-5359	<b>Tank</b> (white plastic trim lever on left hand side) 14" rough-in	<b>137</b>	1.8	41
	5055BXXX-5249	(fluidmaster fill valve) 14" rough in	<b>147</b>	1.8	41
	5055BXXX-5360	<b>Tank</b> (chrome plated trim lever on left hand side) 14" rough-in	<b>137</b>	1.8	41
	5055BXXX-5250	(fluidmaster fill valve) 14" rough in	<b>147</b>	1.8	41
	5055BXXX-5363	<b>Tank</b> (white plastic trim lever on left hand side) 14" rough-in (styrofoam lined)	<b>157</b>	1.8	41
	5055BXXX-5253	(fluidmaster fill valve) 14" rough in (styrofoam lined)	<b>167</b>	1.8	41
	5055BXXX-5364	<b>Tank</b> (chrome plated trim lever on left hand side) 14" rough-in (styrofoam lined)	<b>157</b>	1.8	41
	5055BXXX-5254	(fluidmaster fill valve) 14" rough in (styrofoam lined)	<b>167</b>	1.8	41
	5055BXXX-5367	<b>Tank</b> (white plastic trim lever on right hand side) 14" rough-in	<b>137</b>	1.8	41
5055BXXX-5257	(fluidmaster fill valve) 14" rough in	<b>147</b>	1.8	41	
5055BXXX-5368	<b>Tank</b> (chrome plated trim lever on right hand side) 14" rough-in	<b>137</b>	1.8	41	
5055BXXX-5258	(fluidmaster fill valve) 14" rough in	<b>147</b>	1.8	41	

- 10 year warranty is offered only for plumbing fixtures. • 2 year warranty is offered for the toilet seats and bathroom furniture.
- "XXX" indicates the color. The color surcharge is an additional 20 % for basic colors of the product's price.
- For basic and special colors offered for each suite, refer to page no. 62
- Vitraclean glazing surcharge is \$79 per product. Vitrahygiene glazing surcharge is \$79 per product.

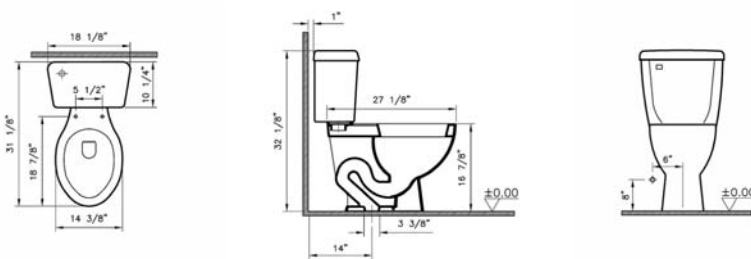
Technical Drawing



6853BXXX-XXXX



5054BXXX-XXXX



5055BXXX-XXXX