
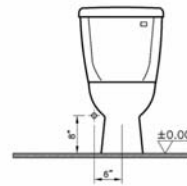
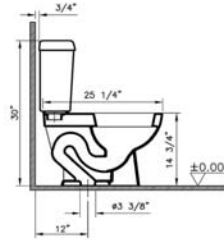


Atlantis Toilets

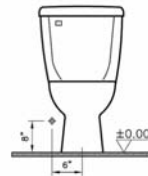
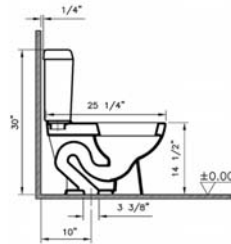
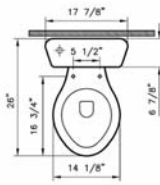
Product	Product Code	Description	White Color USD	Cubes (cu.ft.)	Approx Weight (lbs)
	5050BXXX-0101	Atlantis two-piece toilet, 1.6 gpf (ROUND FRONT bowl) (BOWL ONLY)	112	3.5	44
		Tank (white plastic trim lever on left hand side)			
	6853BXXX-5347	12" rough-in	111	1.8	35
	6853BXXX-5237	(fluidmaster fill valve) 12" rough in	121	1.8	35
		Tank (chrome plated trim lever on left hand side)			
	6853BXXX-5348	12" rough-in	111	1.8	35
	6853BXXX-5238	(fluidmaster fill valve) 12" rough in	121	1.8	35
		Tank (white plastic trim lever on left hand side)			
	6853BXXX-5349	12" rough-in (styrofoam lined)	131	1.8	35
	6853BXXX-5239	(fluidmaster fill valve) 12" rough in (styrofoam lined)	141	1.8	35
		Tank (chrome plated trim lever on left hand side)			
	6853BXXX-5350	12" rough-in (styrofoam lined)	131	1.8	35
	6853BXXX-5240	(fluidmaster fill valve) 12" rough in (styrofoam lined)	141	1.8	35
		Tank (white plastic trim lever on right hand side)			
	6853BXXX-5351	12" rough-in	111	1.8	35
	6853BXXX-5241	(fluidmaster fill valve) 12" rough in	121	1.8	35
		Tank (chrome plated trim lever on right hand side)			
	6853BXXX-5352	12" rough-in	111	1.8	35
	6853BXXX-5242	(fluidmaster fill valve) 12" rough in	121	1.8	35
		Tank (white plastic trim lever on left hand side)			
	5054BXXX-5357	10" rough-in	137	1.8	33
	5054BXXX-5247	(fluidmaster fill valve) 10" rough in	147	1.8	33
		Tank (chrome plated trim lever on left hand side)			
	5054BXXX-5358	10" rough-in	137	1.8	33
	5054BXXX-5248	(fluidmaster fill valve) 10" rough in	147	1.8	33
		Tank (white plastic trim lever on left hand side)			
	5055BXXX-5359	14" rough-in	137	1.8	41
	5055BXXX-5249	(fluidmaster fill valve) 14" rough in	147	1.8	41
		Tank (chrome plated trim lever on left hand side)			
	5055BXXX-5360	14" rough-in	137	1.8	41
5055BXXX-5250	(fluidmaster fill valve) 14" rough in	147	1.8	41	
	Tank (white plastic trim lever on left hand side)				
5055BXXX-5363	14" rough-in (styrofoam lined)	157	1.8	41	
5055BXXX-5253	(fluidmaster fill valve) 14" rough in (styrofoam lined)	167	1.8	41	
	Tank (chrome plated trim lever on left hand side)				
5055BXXX-5364	14" rough-in (styrofoam lined)	157	1.8	41	
5055BXXX-5254	(fluidmaster fill valve) 14" rough in (styrofoam lined)	167	1.8	41	
	Tank (white plastic trim lever on right hand side)				
5055BXXX-5367	14" rough-in	137	1.8	41	
5055BXXX-5257	(fluidmaster fill valve) 14" rough in	147	1.8	41	
	Tank (chrome plated trim lever on right hand side)				
5055BXXX-5368	14" rough-in	137	1.8	41	
5055BXXX-5258	(fluidmaster fill valve) 14" rough in	147	1.8	41	

- 10 year warranty is offered only for plumbing fixtures. • 2 year warranty is offered for the toilet seats and bathroom furniture.
- "XXX" indicates the color. The color surcharge is an additional 20 % for basic colors of the product's price.
For basic and special colors offered for each suite, refer to page no. 62
- Vitraclean glazing surcharge is \$79 per product. Vitrahygiene glazing surcharge is \$79 per product.

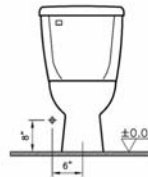
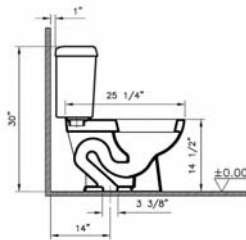
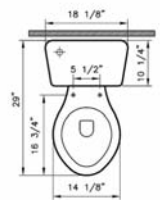
Technical Drawing



6853BXXX-XXXX




5054BXXX-XXXX



5055BXXX-XXXX

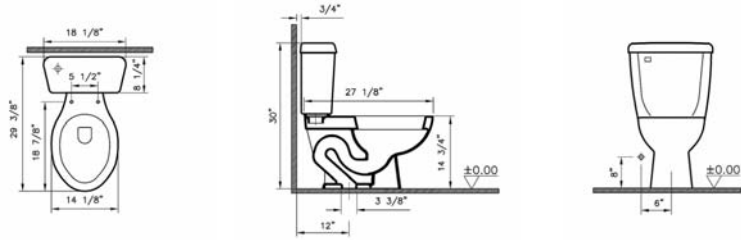
Atlantis Toilets

VitrA

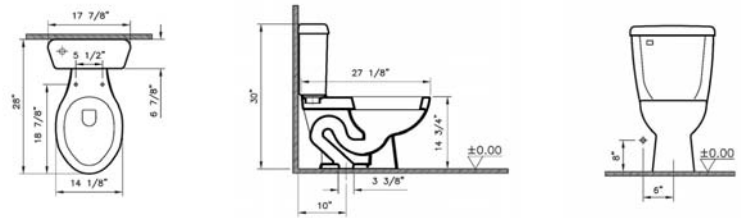
Product	Product Code	Description	White Color USD	Cubes (cu.ft.)	Approx Weight (lbs)
	5051BXXX-0101	Atlantis two-piece toilet, 1.6 gpf (ELONGATED bowl) (BOWL ONLY)	144	3.4	45
	6853BXXX-5347 6853BXXX-5237	Tank (white plastic trim lever on left hand side) 12" rough-in (fluidmaster fill valve) 12" rough in	111 121	1.8 1.8	35 35
	6853BXXX-5348 6853BXXX-5238	Tank (chrome plated trim lever on left hand side) 12" rough-in (fluidmaster fill valve) 12" rough in	111 121	1.8 1.8	35 35
	6853BXXX-5349 6853BXXX-5239	Tank (white plastic trim lever on left hand side) 12" rough-in (styrofoam lined) (fluidmaster fill valve) 12" rough in (styrofoam lined)	131 141	1.8 1.8	35 35
	6853BXXX-5350 6853BXXX-5240	Tank (chrome plated trim lever on left hand side) 12" rough-in (styrofoam lined) (fluidmaster fill valve) 12" rough in (styrofoam lined)	131 141	1.8 1.8	35 35
	6853BXXX-5351 6853BXXX-5241	Tank (white plastic trim lever on right hand side) 12" rough-in (fluidmaster fill valve) 12" rough in	111 121	1.8 1.8	35 35
	6853BXXX-5352 6853BXXX-5242	Tank (chrome plated trim lever on right hand side) 12" rough-in (fluidmaster fill valve) 12" rough in	111 121	1.8 1.8	35 35
	5054BXXX-5357 5054BXXX-5247	Tank (white plastic trim lever on left hand side) 10" rough-in (fluidmaster fill valve) 10" rough in	137 147	1.8 1.8	33 33
	5054BXXX-5358 5054BXXX-5248	Tank (chrome plated trim lever on left hand side) 10" rough-in (fluidmaster fill valve) 10" rough in	137 147	1.8 1.8	33 33
	5055BXXX-5359 5055BXXX-5249	Tank (white plastic trim lever on left hand side) 14" rough-in (fluidmaster fill valve) 14" rough in	137 147	1.8 1.8	41 41
	5055BXXX-5360 5055BXXX-5250	Tank (chrome plated trim lever on left hand side) 14" rough-in (fluidmaster fill valve) 14" rough in	137 147	1.8 1.8	41 41
	5055BXXX-5363 5055BXXX-5253	Tank (white plastic trim lever on left hand side) 14" rough-in (styrofoam lined) (fluidmaster fill valve) 14" rough in (styrofoam lined)	157 167	1.8 1.8	41 41
	5055BXXX-5364 5055BXXX-5254	Tank (chrome plated trim lever on left hand side) 14" rough-in (styrofoam lined) (fluidmaster fill valve) 14" rough in (styrofoam lined)	157 167	1.8 1.8	41 41
	5055BXXX-5367 5055BXXX-5257	Tank (white plastic trim lever on right hand side) 14" rough-in (fluidmaster fill valve) 14" rough in	137 147	1.8 1.8	41 41
	5055BXXX-5368 5055BXXX-5258	Tank (chrome plated trim lever on right hand side) 14" rough-in (fluidmaster fill valve) 14" rough in	137 147	1.8 1.8	41 41

- 10 year warranty is offered only for plumbing fixtures. • 2 year warranty is offered for the toilet seats and bathroom furniture.
- "XXX" indicates the color. The color surcharge is an additional 20 % for basic colors of the product's price.
For basic and special colors offered for each suite, refer to page no. 62
- VitrAclean glazing surcharge is \$79 per product. VitrAhygiene glazing surcharge is \$79 per product.

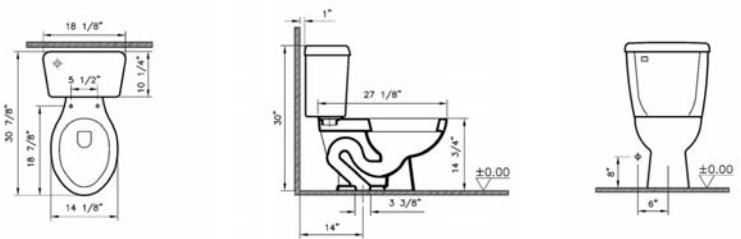
Technical Drawing



6853BXXX-XXXX





5054BXXX-XXXX



5055BXXX-XXXX

Atlantis Toilets

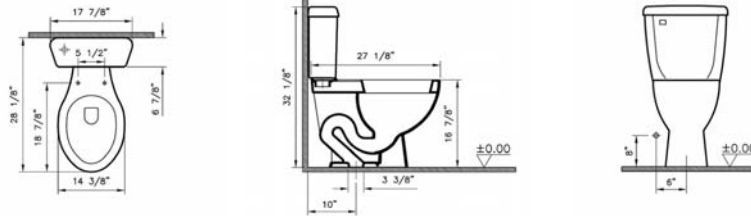
Product	Product Code	Description	White Color USD	Cubes (cu.ft.)	Approx Weight (lbs)
 	5052BXXX-0075	Atlantis two-piece toilet, 1.6 gpf (ELONGATED bowl) (BOWL ONLY) ADA Compliant	229	4.4	53
	6853BXXX-5347	Tank (white plastic trim lever on left hand side) 12" rough-in	111	1.8	35
	6853BXXX-5237	(fluidmaster fill valve) 12" rough in	121	1.8	35
	6853BXXX-5348	Tank (chrome plated trim lever on left hand side) 12" rough-in	111	1.8	35
	6853BXXX-5238	(fluidmaster fill valve) 12" rough in	121	1.8	35
	6853BXXX-5349	Tank (white plastic trim lever on left hand side) 12" rough-in (styrofoam lined)	131	1.8	35
	6853BXXX-5239	(fluidmaster fill valve) 12" rough in (styrofoam lined)	141	1.8	35
	6853BXXX-5350	Tank (chrome plated trim lever on left hand side) 12" rough-in (styrofoam lined)	131	1.8	35
	6853BXXX-5240	(fluidmaster fill valve) 12" rough in (styrofoam lined)	141	1.8	35
	6853BXXX-5351	Tank (white plastic trim lever on right hand side) 12" rough-in	111	1.8	35
	6853BXXX-5241	(fluidmaster fill valve) 12" rough in	121	1.8	35
	6853BXXX-5352	Tank (chrome plated trim lever on right hand side) 12" rough-in	111	1.8	35
	6853BXXX-5242	(fluidmaster fill valve) 12" rough in	121	1.8	35
	5054BXXX-5357	Tank (white plastic trim lever on left hand side) 10" rough-in	137	1.8	33
	5054BXXX-5247	(fluidmaster fill valve) 10" rough in	147	1.8	33
	5054BXXX-5358	Tank (chrome plated trim lever on left hand side) 10" rough-in	137	1.8	33
	5054BXXX-5248	(fluidmaster fill valve) 10" rough in	147	1.8	33
	5055BXXX-5359	Tank (white plastic trim lever on left hand side) 14" rough-in	137	1.8	41
	5055BXXX-5249	(fluidmaster fill valve) 14" rough in	147	1.8	41
	5055BXXX-5360	Tank (chrome plated trim lever on left hand side) 14" rough-in	137	1.8	41
	5055BXXX-5250	(fluidmaster fill valve) 14" rough in	147	1.8	41
	5055BXXX-5363	Tank (white plastic trim lever on left hand side) 14" rough-in (styrofoam lined)	157	1.8	41
	5055BXXX-5253	(fluidmaster fill valve) 14" rough in (styrofoam lined)	167	1.8	41
	5055BXXX-5364	Tank (chrome plated trim lever on left hand side) 14" rough-in (styrofoam lined)	157	1.8	41
5055BXXX-5254	(fluidmaster fill valve) 14" rough in (styrofoam lined)	167	1.8	41	
5055BXXX-5367	Tank (white plastic trim lever on right hand side) 14" rough-in	137	1.8	41	
5055BXXX-5257	(fluidmaster fill valve) 14" rough in	147	1.8	41	
5055BXXX-5368	Tank (chrome plated trim lever on right hand side) 14" rough-in	137	1.8	41	
5055BXXX-5258	(fluidmaster fill valve) 14" rough in	147	1.8	41	

- 10 year warranty is offered only for plumbing fixtures. • 2 year warranty is offered for the toilet seats and bathroom furniture.
- "XXX" indicates the color. The color surcharge is an additional 20 % for basic colors of the product's price.
- For basic and special colors offered for each suite, refer to page no. 62
- Vitraclean glazing surcharge is \$79 per product. Vitrahygiene glazing surcharge is \$79 per product.

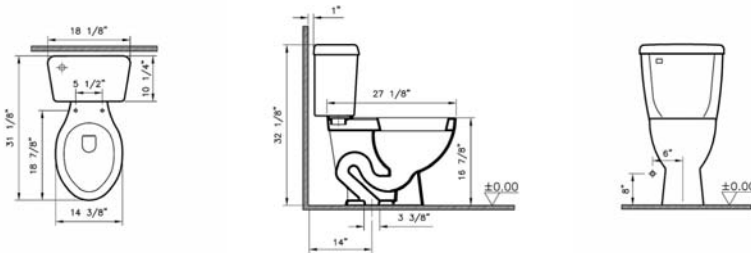
Technical Drawing



6853BXXX-XXXX



5054BXXX-XXXX



5055BXXX-XXXX