







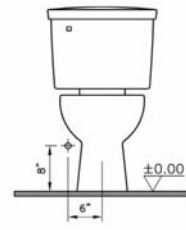
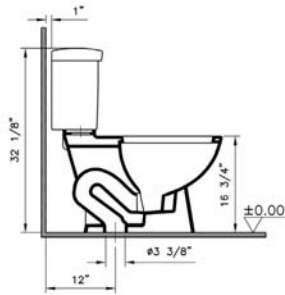
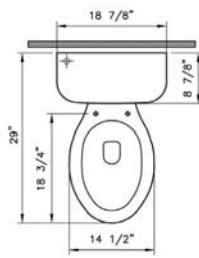


# Corina Green

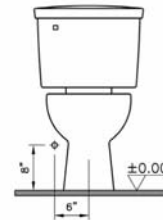
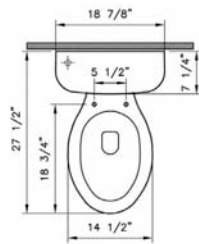
Product	Product Code	Description	White Color USD	Cubes (sq.ft)	Approx Weight (lbs)
     	5232BXXX-0101	<b>Two-piece toilet, 1.28 gpf HET</b> (ELONGATED bowl) (BOWL ONLY) (extended height) <b>ADA Compliant</b>	<b>319</b>	8.2	55
	5070BXXX-5370	<b>Tank*</b> Polished chrome metal trim lever on left hand side, fluidmaster fill valve 12" rough-in	<b>140</b>	3.6	38
	5070BXXX-5376	<b>Tank*</b> Polished chrome metal trim lever on right hand side, fluidmaster fill valve 12" rough-in	<b>140</b>	3.6	38
	5070BXXX-5372	<b>Tank*</b> White plastic trim lever on left hand side, fluidmaster fill valve 12" rough-in	<b>130</b>	3.6	38
	5070BXXX-5385	<b>Tank*</b> White plastic trim lever on right hand side, fluidmaster fill valve 12" rough-in	<b>130</b>	3.6	38
	5396BXXX-5370	<b>Tank*</b> Polished chrome metal trim lever on left hand side, fluidmaster fill valve 10" rough-in	<b>160</b>	2.4	38
	5396BXXX-5376	<b>Tank*</b> Polished chrome metal trim lever on right hand side, fluidmaster fill valve 10" rough-in	<b>160</b>	2.4	38
	5396BXXX-5372	<b>Tank*</b> White plastic trim lever on left hand side, fluidmaster fill valve 10" rough-in	<b>150</b>	2.4	38
	5396BXXX-5385	<b>Tank*</b> White plastic trim lever on right hand side, fluidmaster fill valve 10" rough-in	<b>150</b>	2.4	38
	5398BXXX-5370	<b>Tank*</b> Polished chrome metal trim lever on left hand side, fluidmaster fill valve 14" rough-in	<b>160</b>	3.3	50
	5398BXXX-5376	<b>Tank*</b> Polished chrome metal trim lever on right hand side, fluidmaster fill valve 14" rough-in	<b>160</b>	3.3	50
	5398BXXX-5372	<b>Tank*</b> White plastic trim lever on left hand side, fluidmaster fill valve 14" rough-in	<b>150</b>	3.3	50
	5398-BXXX-5385	<b>Tank*</b> White Plastic trim lever on right hand side, fluidmaster fill valve 14" rough-in	<b>150</b>	3.3	50
	<b>313109</b>	<b>Trim lever (satin nickel)</b> (front left hand side) (compatible with 5070, 5396, 5398)	<b>30</b>		
	<b>313110</b>	<b>Trim lever (satin nickel)</b> (front right hand side) (compatible with 5070, 5396, 5398)	<b>30</b>		

- 10 year warranty is offered only for plumbing fixtures. • 2 year warranty is offered for the toilet seats and bathroom furniture.
- "XXX" indicates the color. The color surcharge is an additional 20 % for basic colors of the product's price.
- For basic and special colors offered for each suite, refer to page no. 62
- VitraClean glazing surcharge is \$79 per product. VitraHygiene glazing surcharge is \$79 per product.
- \* Styrofoam lined tanks are available on request with a \$10 up-charge per tank.

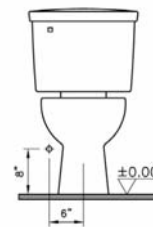
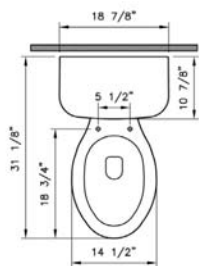
Technical Drawing



5070BXXX-XXXX





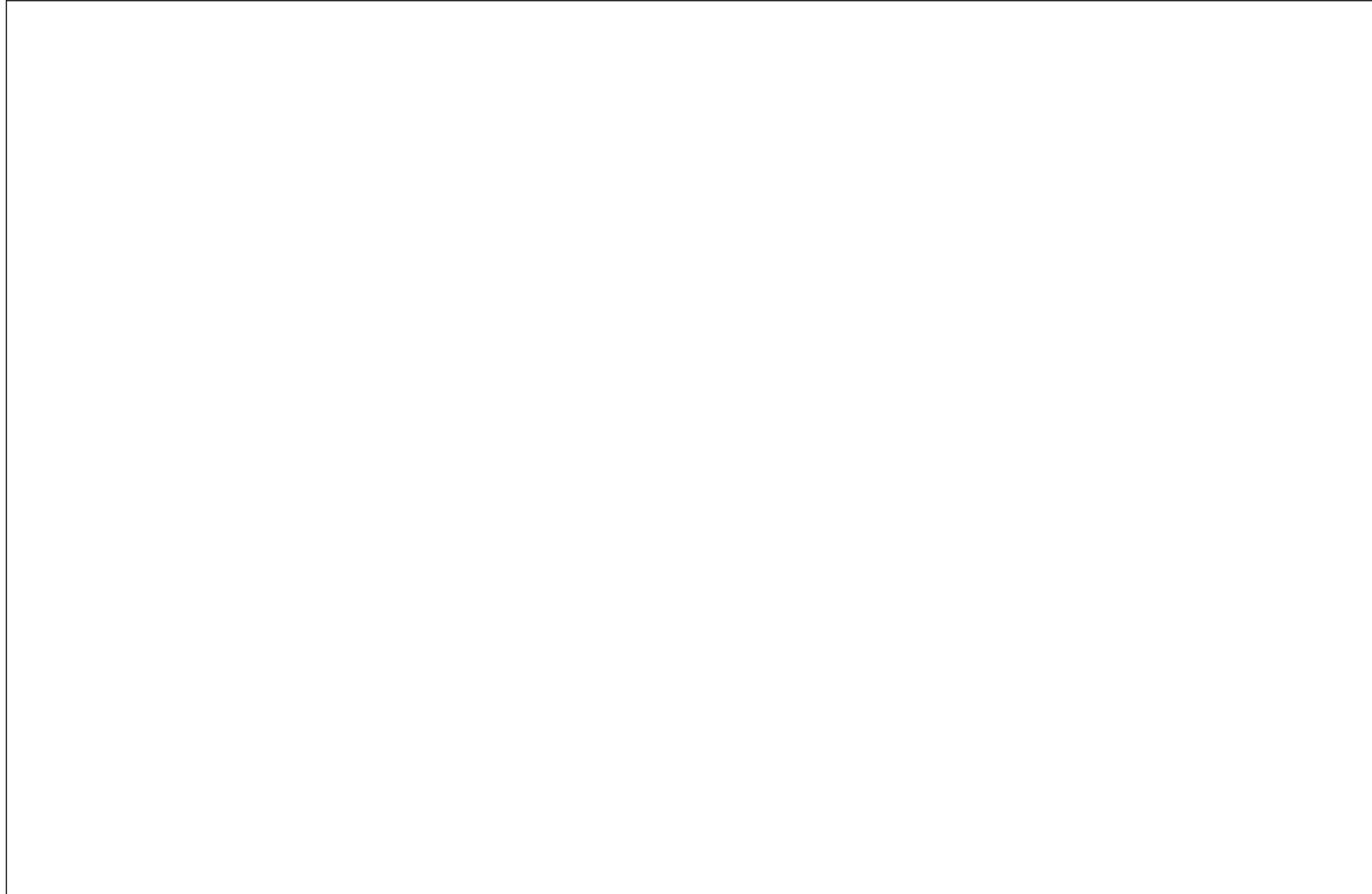
5396BXXX-XXXX



5398BXXX-XXXX

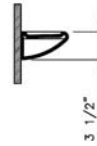
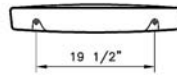
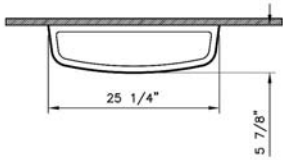
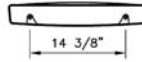
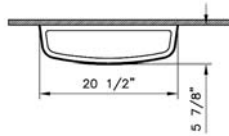
# Accessories

Product	Product Code	Description	White Color USD	Cubes (sq.ft)	Approx Weight (lbs)
	6338BXXX-0156	20 1/2" Shelf	45	1.1	8
	6337BXXX-0156	25 1/4" Shelf	55	1.4	11



- 10 year warranty is offered only for plumbing fixtures. • 2 year warranty is offered for the toilet seats and bathroom furniture.
- "XXX" indicates the color. The color surcharge is an additional 20 % for basic colors of the product's price.  
For basic and special colors offered for each suite, refer to page no. 62
- VitrAclean glazing surcharge is \$79 per product. VitrAhygiene glazing surcharge is \$79 per product.

Technical Drawing



# Colors

# VitrA

## Plumbing Fixtures



	003 White	017 Bone*	068 Biscuit**
Corina	•	•	•
EverGreen	•	•	•
Atlantis	•	•	•

- The color surcharge is an additional 20% for basic colors of the product's price.
- Basic colors : 017 Bone, 068 Biscuit
- The first zero of the color codes should be replaced for ordering VitrAclean and/or VitrAhygiene.
- VitrAclean : 4xx
- VitrAhygiene : 6xx
- VitrAclean & VitrAhygiene: 7xx

\* New orders from the factory require a minimum order quantity of 10 pcs per product.

\*\* New orders from the factory require a minimum order quantity of 5 pcs per product.