






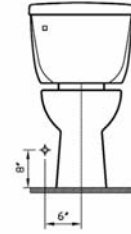
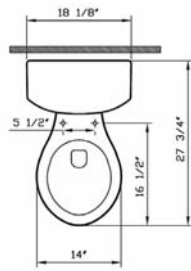


EverGreen High Efficiency Toilets (HET) and Urinals (HEU)

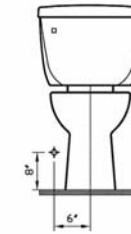
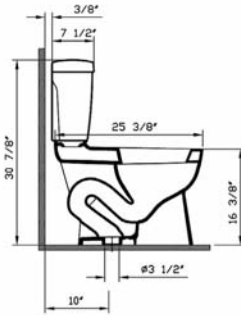
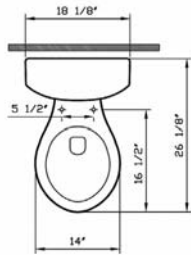
| Product | Product Code | Description | White Color USD | Cubes (sq.ft) | Approx Weight (lbs) |
|---|---------------|---|-----------------|---------------|---------------------|
|      | 5196BXXX-0075 | EverGreen Two-piece toilet 1.2 gpf HET (ROUND FRONT bowl) (BOWL ONLY) (extended height) ADA compliant | 148 | 7.3 | 49 |
| | 5402BXXX-5332 | Tank* (polished chrome plated metal lever on left hand side, fluidmaster fill valve) 12" rough-in | 120 | 2.9 | 37 |
| | 5402BXXX-5335 | Tank* (polished chrome plated metal lever on right hand side, fluidmaster fill valve) 12" rough-in | 120 | 2.9 | 37 |
| | 5402BXXX-5249 | Tank* (white lever on left hand side, fluidmaster fill valve) 12" rough-in | 110 | 2.9 | 37 |
| | 5400BXXX-5332 | Tank* (polished chrome plated metal lever on left hand side, fluidmaster fill valve) 10" rough-in | 173 | 2.8 | 32 |
| | 5400BXXX-5335 | Tank* (polished chrome plated metal lever on right hand side, fluidmaster fill valve) 10" rough-in | 173 | 2.8 | 32 |
| | 5400BXXX-5249 | Tank* (white lever on left hand side, fluidmaster fill valve) 10" rough-in | 163 | 2.8 | 32 |
| | 5404BXXX-5332 | Tank* (polished chrome plated metal lever on left hand side, fluidmaster fill valve) 14" rough-in | 173 | 3.5 | 44 |
| | 5404BXXX-5335 | Tank* (polished chrome plated metal lever on right hand side, fluidmaster fill valve) 14" rough-in | 173 | 3.5 | 44 |
| | 5404BXXX-5249 | Tank* (white lever on left hand side, fluidmaster fill valve) 14" rough-in | 163 | 3.5 | 44 |
|  | 313109 | Trim lever (satin nickel) (front left hand side) (compatible with 5402, 5400, 5404) | 30 | | |
|  | 313110 | Trim lever (satin nickel) (front right hand side) (compatible with 5402, 5400, 5404) | 30 | | |

- 10 year warranty is offered only for plumbing fixtures. • 2 year warranty is offered for the toilet seats and bathroom furniture.
- "XXX" indicates the color. The color surcharge is an additional 20 % for basic colors of the product's price.
- For basic and special colors offered for each suite, refer to page no. 62
- VitrAclean glazing surcharge is \$79 per product. VitrAhygiene glazing surcharge is \$79 per product.
- * Styrofoam lined tanks are available on request with a \$10 up-charge per tank.

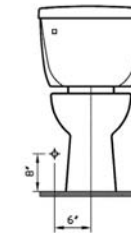
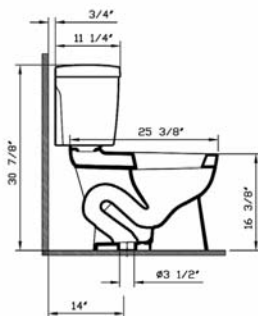
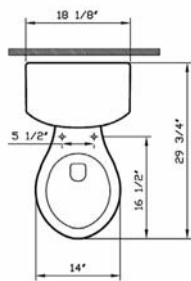
Technical Drawing



5402BXXX-XXXX



5400BXXX-XXXX



5404BXXX-XXXX