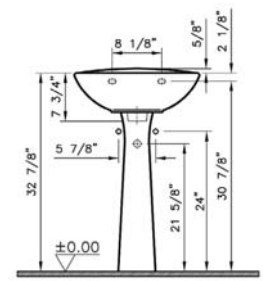
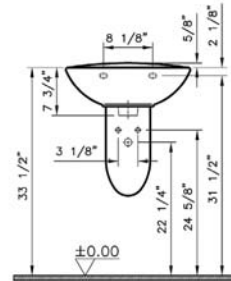
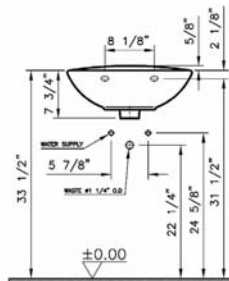
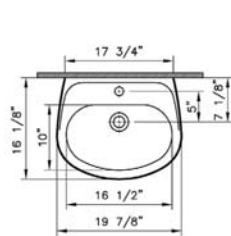
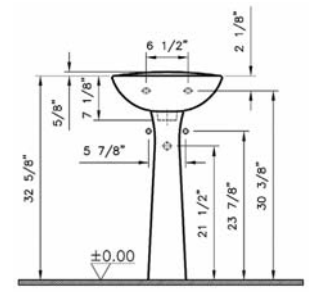
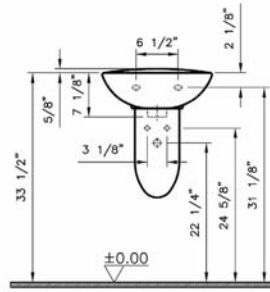
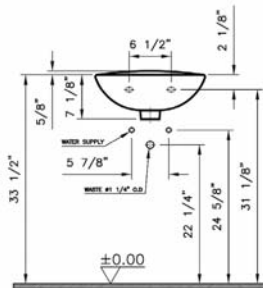
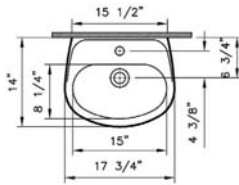
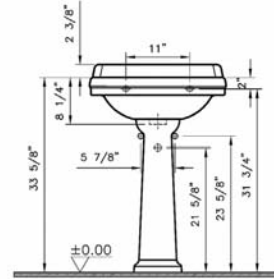
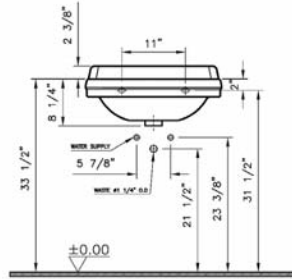
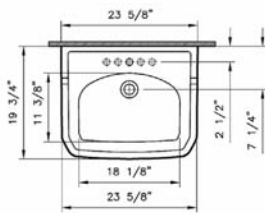


# Pedestal Lavatories

Product	Product Code	Description	White Color USD	Cubes (cu.ft.)	Approx Weight (lbs)
	6179BXXX-0030	24" x 20" Art Deco pedestal lavatory (4" faucet drilling)	290	3.2	40
	6179BXXX-0033	24" x 20" Art Deco pedestal lavatory (8" faucet drilling)	290	3.2	40
	6179BXXX-0999	24" x 20" Art Deco pedestal lavatory (Single-hole faucet drilling)	290	3.2	40
	6939BXXX-0162	Pedestal base	155	1.4	22
	5078BXXX-0030	18" x 14" Normus pedestal lavatory (4" faucet drilling)	80	1.2	20
	5078BXXX-0999	18" x 14" Normus pedestal lavatory (Single-hole faucet drilling)	80	1.2	20
	6968BXXX-0156	Pedestal base	54	0.8	21
	6948BXXX-0162	Trap cover	60	1.3	16
	5079BXXX-0030	20" x 16" Normus pedestal lavatory (4" faucet drilling)	84	2.1	29
	5079BXXX-0033	20" x 16" Normus pedestal lavatory (8" faucet drilling)	84	2.1	29
	5079BXXX-0999	20" x 16" Normus pedestal lavatory (Single-hole faucet drilling)	84	2.1	29
	6968BXXX-0156	Pedestal base	54	0.8	21
	6948BXXX-0162	Trap cover	60	1.3	16

- 10 year warranty is offered only for plumbing fixtures. • 2 year warranty is offered for the toilet seats and bathroom furniture.
- "XXX" indicates the color. The color surcharge is an additional 20 % for basic colors of the product's price.  
For basic and special colors offered for each suite, refer to page no. 62
- Vitraclean glazing surcharge is \$79 per product. VitrAhygiene glazing surcharge is \$79 per product.

Technical Drawing



# Colors

# VitrA

## Plumbing Fixtures



	003 White	017 Bone*	068 Biscuit**
Corina	•	•	•
EverGreen	•	•	•
Atlantis	•	•	•

- The color surcharge is an additional 20% for basic colors of the product's price.
- Basic colors : 017 Bone, 068 Biscuit
- The first zero of the color codes should be replaced for ordering VitrAclean and/or VitrAhygiene.
- VitrAclean : 4xx
- VitrAhygiene : 6xx
- VitrAclean & VitrAhygiene: 7xx

\* New orders from the factory require a minimum order quantity of 10 pcs per product.

\*\* New orders from the factory require a minimum order quantity of 5 pcs per product.