




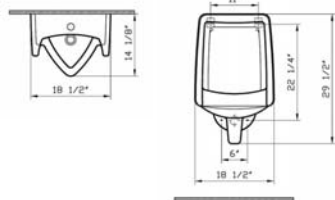
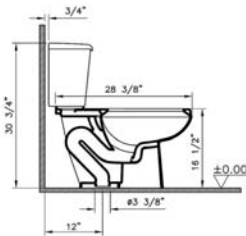
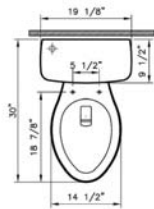
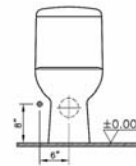
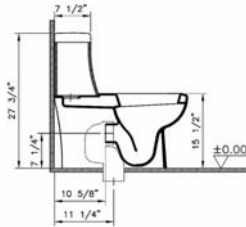
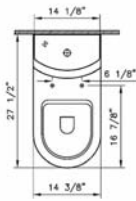
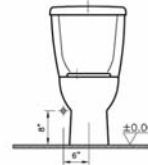
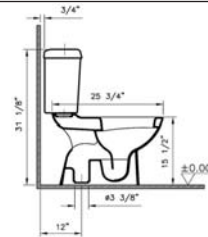
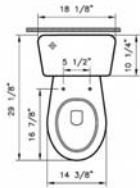
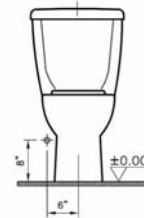
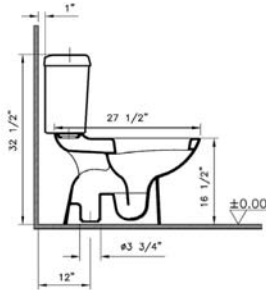
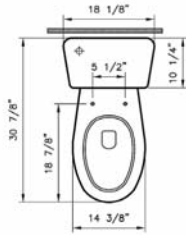


## EverGreen High Efficiency Toilets (HET) and Urinals (HEU)

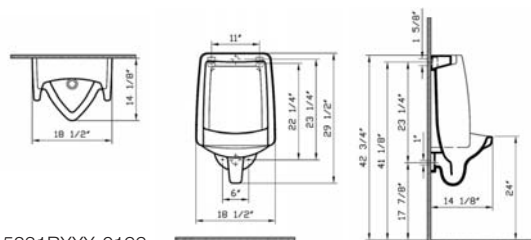
Product	Product Code	Description	White Color USD	Cubes (sq.ft)	Approx Weight (lbs)
	5074BXXX-0075	<b>Dual Flush wash down Two-piece toilet, 1.6 gpf / 0.8 gpf HET</b> ELONGATED bowl (BOWL ONLY) 12" rough in (extended height) <b>ADA compliant</b>	<b>250</b>	6.5	47
	5055BXXX-5219	<b>Tank</b> (with dual flush mechanism, fluidmaster fill valve)	<b>215</b>	1.8	41
	5076BXXX-0075	<b>Dual Flush wash down Two-piece toilet, 1.6 gpf / 0.8 gpf HET</b> ROUND FRONT bowl (BOWL ONLY) 12" rough in (extended height) <b>ADA compliant</b>	<b>220</b>	6.5	47
	5055BXXX-5219	<b>Tank</b> (with dual flush mechanism, fluidmaster fill valve)	<b>215</b>	1.8	41
	4125BXXX-5338	<b>One-piece toilet with tank, 1.6 gpf / 0.8 gpf HET</b> (ROUND FRONT bowl) (BOWL ONLY) 12" rough in (with dual flush mechanism)	<b>450</b>	13.1	94
	5065BXXX-0101	<b>Pressure assisted toilet, 1.0 gpf HET</b> ELONGATED bowl (BOWL ONLY) 12" rough in (extended height) <b>ADA Compliant</b>	<b>195</b>	4.5	49
	5066BXXX-5280	<b>Tank</b> (equipped with SLOAN FLUSHMATE™ IV) 1.0 gpf (chrome plated trim lever on left hand side)	<b>370</b>	1.8	36
	5066BXXX-5281	<b>Tank</b> (equipped with SLOAN FLUSHMATE™ IV) 1.0 gpf (chrome plated trim lever on right hand side)	<b>370</b>	1.8	36
	5231BXXX-0198	<b>Urinal, 0.25 GPF HEU</b> (wash out urinal 3/4" top spud) <b>ADA Compliant</b>	<b>395</b>	5.2	62
	5231BXXX-0199	<b>Urinal, 0.25 gpf HEU</b> (wash out urinal, 3/4" rear spud) <b>ADA Compliant</b>	<b>395</b>	5.2	62

- 10 year warranty is offered only for plumbing fixtures. • 2 year warranty is offered for the toilet seats and bathroom furniture.
- "XXX" indicates the color. The color surcharge is an additional 20 % for basic colors of the product's price.  
For basic and special colors offered for each suite, refer to page no. 62
- Vitraclean glazing surcharge is \$79 per product. VitrAhygiene glazing surcharge is \$79 per product.

## Technical Drawing



5231BXXX-0198



5231BXXX-0199