




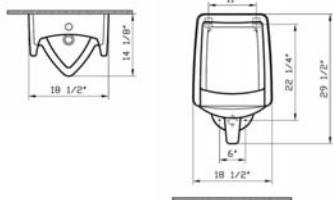
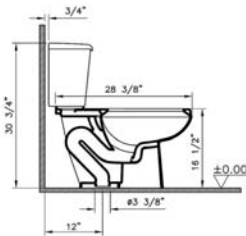
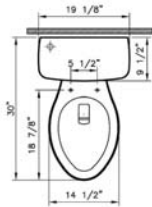
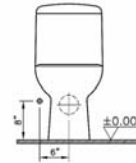
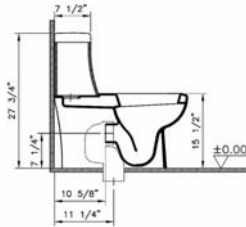
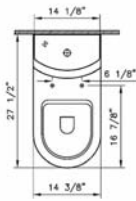
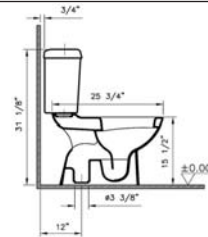
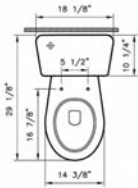
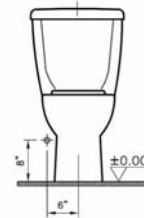
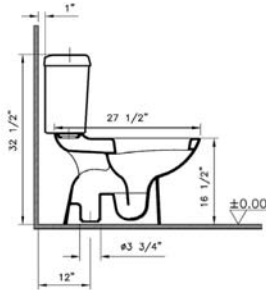
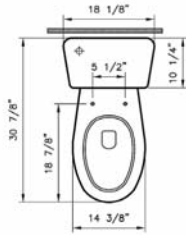


EverGreen High Efficiency Toilets (HET) and Urinals (HEU)

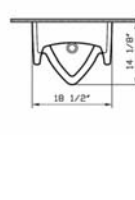
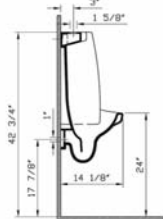
Product	Product Code	Description	White Color USD	Cubes (sq.ft)	Approx Weight (lbs)
	5074BXXX-0075	Dual Flush wash down Two-piece toilet, 1.6 gpf / 0.8 gpf HET ELONGATED bowl (BOWL ONLY) 12" rough in (extended height) ADA compliant	250	6.5	47
	5055BXXX-5219	Tank (with dual flush mechanism, fluidmaster fill valve)	215	1.8	41
	5076BXXX-0075	Dual Flush wash down Two-piece toilet, 1.6 gpf / 0.8 gpf HET ROUND FRONT bowl (BOWL ONLY) 12" rough in (extended height) ADA compliant	220	6.5	47
	5055BXXX-5219	Tank (with dual flush mechanism, fluidmaster fill valve)	215	1.8	41
	4125BXXX-5338	One-piece toilet with tank, 1.6 gpf / 0.8 gpf HET (ROUND FRONT bowl) (BOWL ONLY) 12" rough in (with dual flush mechanism)	450	13.1	94
	5065BXXX-0101	Pressure assisted toilet, 1.0 gpf HET ELONGATED bowl (BOWL ONLY) 12" rough in (extended height) ADA Compliant	195	4.5	49
	5066BXXX-5280	Tank (equipped with SLOAN FLUSHMATE™ IV) 1.0 gpf (chrome plated trim lever on left hand side)	370	1.8	36
	5066BXXX-5281	Tank (equipped with SLOAN FLUSHMATE™ IV) 1.0 gpf (chrome plated trim lever on right hand side)	370	1.8	36
	5231BXXX-0198	Urinal, 0.25 GPF HEU (wash out urinal 3/4" top spud) ADA Compliant	395	5.2	62
	5231BXXX-0199	Urinal, 0.25 gpf HEU (wash out urinal, 3/4" rear spud) ADA Compliant	395	5.2	62

- 10 year warranty is offered only for plumbing fixtures. • 2 year warranty is offered for the toilet seats and bathroom furniture.
- "XXX" indicates the color. The color surcharge is an additional 20 % for basic colors of the product's price.
For basic and special colors offered for each suite, refer to page no. 62
- Vitraclean glazing surcharge is \$79 per product. VitrAhygiene glazing surcharge is \$79 per product.

Technical Drawing



5231BXXX-0198



5231BXXX-0199

