


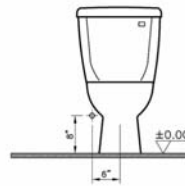
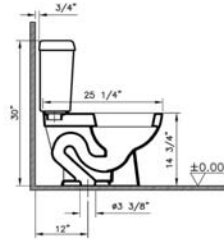
# Atlantis Toilets

# VitrA

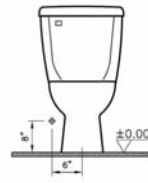
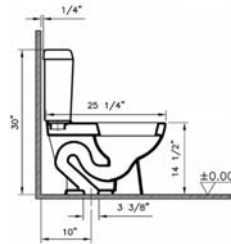
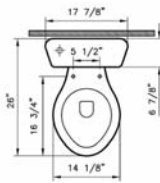
Product	Product Code	Description	White Color USD	Cubes (cu.ft.)	Approx Weight (lbs)
	5051BXXX-0101	<b>Atlantis two-piece toilet, 1.6 gpf</b> (ELONGATED bowl) (BOWL ONLY)	<b>144</b>	3.4	45
	6853BXXX-5347 6853BXXX-5237	<b>Tank</b> (white plastic trim lever on left hand side) 12" rough-in (fluidmaster fill valve) 12" rough in	<b>111</b> <b>121</b>	1.8 1.8	35 35
	6853BXXX-5348 6853BXXX-5238	<b>Tank</b> (chrome plated trim lever on left hand side) 12" rough-in (fluidmaster fill valve) 12" rough in	<b>111</b> <b>121</b>	1.8 1.8	35 35
	6853BXXX-5349 6853BXXX-5239	<b>Tank</b> (white plastic trim lever on left hand side) 12" rough-in (styrofoam lined) (fluidmaster fill valve) 12" rough in (styrofoam lined)	<b>131</b> <b>141</b>	1.8 1.8	35 35
	6853BXXX-5350 6853BXXX-5240	<b>Tank</b> (chrome plated trim lever on left hand side) 12" rough-in (styrofoam lined) (fluidmaster fill valve) 12" rough in (styrofoam lined)	<b>131</b> <b>141</b>	1.8 1.8	35 35
	6853BXXX-5351 6853BXXX-5241	<b>Tank</b> (white plastic trim lever on right hand side) 12" rough-in (fluidmaster fill valve) 12" rough in	<b>111</b> <b>121</b>	1.8 1.8	35 35
	6853BXXX-5352 6853BXXX-5242	<b>Tank</b> (chrome plated trim lever on right hand side) 12" rough-in (fluidmaster fill valve) 12" rough in	<b>111</b> <b>121</b>	1.8 1.8	35 35
	5054BXXX-5357 5054BXXX-5247	<b>Tank</b> (white plastic trim lever on left hand side) 10" rough-in (fluidmaster fill valve) 10" rough in	<b>137</b> <b>147</b>	1.8 1.8	33 33
	5054BXXX-5358 5054BXXX-5248	<b>Tank</b> (chrome plated trim lever on left hand side) 10" rough-in (fluidmaster fill valve) 10" rough in	<b>137</b> <b>147</b>	1.8 1.8	33 33
	5055BXXX-5359 5055BXXX-5249	<b>Tank</b> (white plastic trim lever on left hand side) 14" rough-in (fluidmaster fill valve) 14" rough in	<b>137</b> <b>147</b>	1.8 1.8	41 41
	5055BXXX-5360 5055BXXX-5250	<b>Tank</b> (chrome plated trim lever on left hand side) 14" rough-in (fluidmaster fill valve) 14" rough in	<b>137</b> <b>147</b>	1.8 1.8	41 41
	5055BXXX-5363 5055BXXX-5253	<b>Tank</b> (white plastic trim lever on left hand side) 14" rough-in (styrofoam lined) (fluidmaster fill valve) 14" rough in (styrofoam lined)	<b>157</b> <b>167</b>	1.8 1.8	41 41
	5055BXXX-5364 5055BXXX-5254	<b>Tank</b> (chrome plated trim lever on left hand side) 14" rough-in (styrofoam lined) (fluidmaster fill valve) 14" rough in (styrofoam lined)	<b>157</b> <b>167</b>	1.8 1.8	41 41
	5055BXXX-5367 5055BXXX-5257	<b>Tank</b> (white plastic trim lever on right hand side) 14" rough-in (fluidmaster fill valve) 14" rough in	<b>137</b> <b>147</b>	1.8 1.8	41 41
	5055BXXX-5368 5055BXXX-5258	<b>Tank</b> (chrome plated trim lever on right hand side) 14" rough-in (fluidmaster fill valve) 14" rough in	<b>137</b> <b>147</b>	1.8 1.8	41 41

- 10 year warranty is offered only for plumbing fixtures. • 2 year warranty is offered for the toilet seats and bathroom furniture.
- "XXX" indicates the color. The color surcharge is an additional 20 % for basic colors of the product's price.  
For basic and special colors offered for each suite, refer to page no. 62
- VitrAclean glazing surcharge is \$79 per product. VitrAhygiene glazing surcharge is \$79 per product.

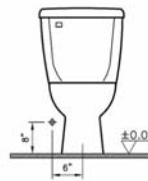
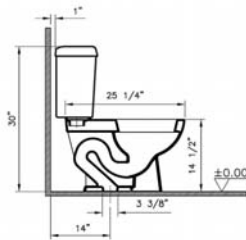
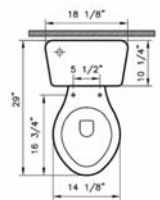
Technical Drawing



6853BXXX-XXXX



5054BXXX-XXXX



5055BXXX-XXXX

# Colors

# VitrA

## Plumbing Fixtures



	003 White	017 Bone*	068 Biscuit**
Corina	●	●	●
EverGreen	●	●	●
Atlantis	●	●	●

- The color surcharge is an additional 20% for basic colors of the product's price.
- Basic colors : 017 Bone, 068 Biscuit
- The first zero of the color codes should be replaced for ordering VitrAclean and/or VitrAhygiene.
- VitrAclean : 4xx
- VitrAhygiene : 6xx
- VitrAclean & VitrAhygiene: 7xx

\* New orders from the factory require a minimum order quantity of 10 pcs per product.

\*\* New orders from the factory require a minimum order quantity of 5 pcs per product.