



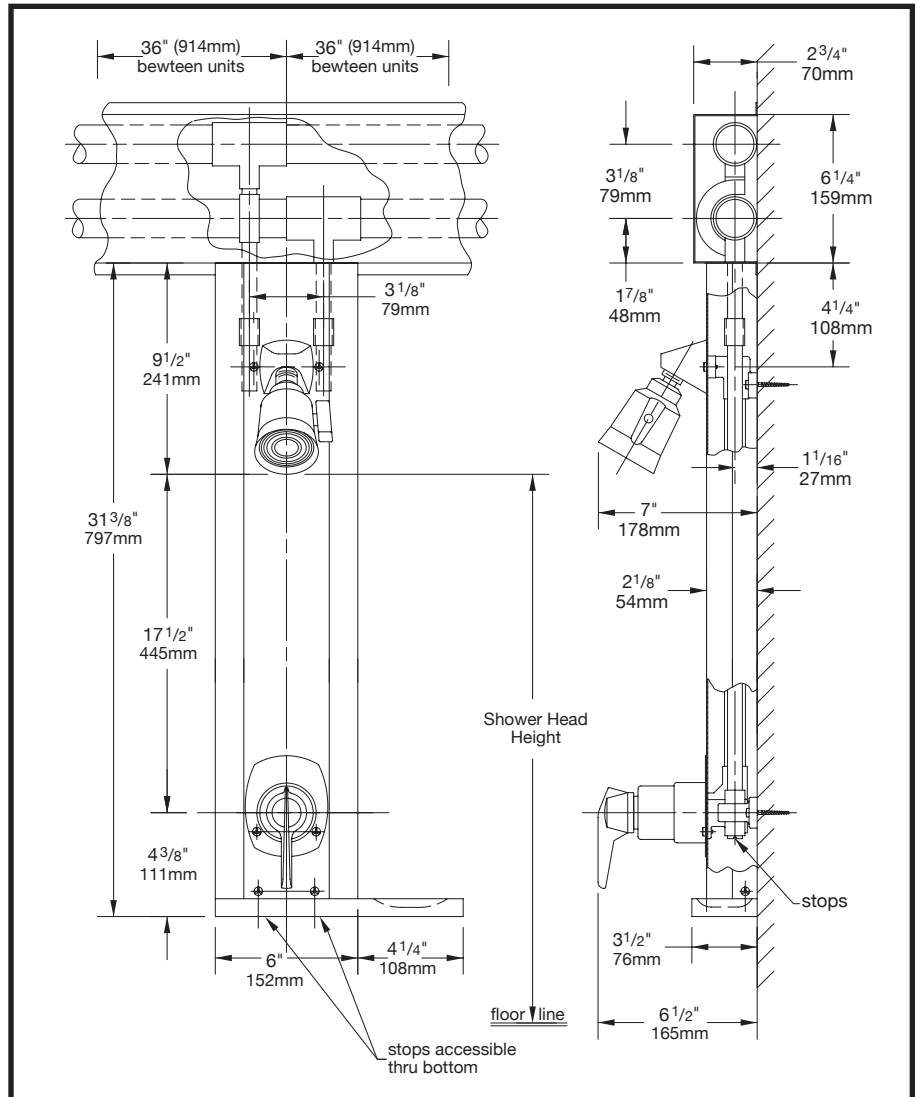
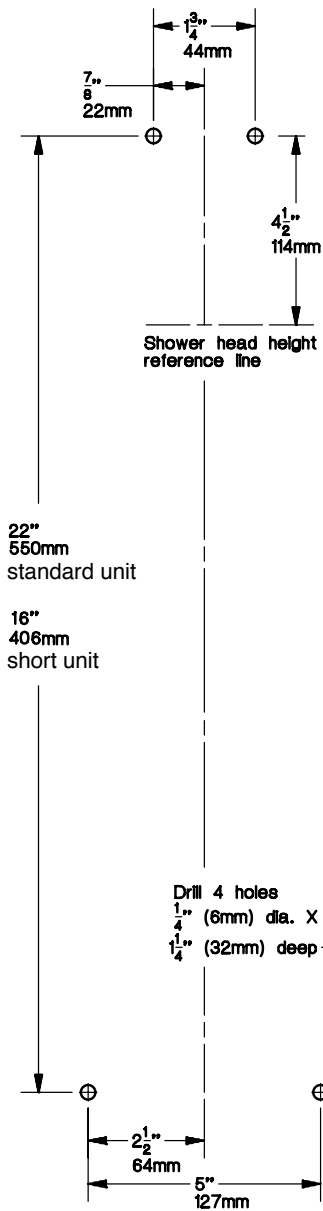
# SYMMONS® Hydapipe®

**1-805 Series (standard)**  
**1-806 Series (short)**

## INSTALLATION INSTRUCTIONS

Product meets ANSI A112.18.1M  
 Flow rate: 2.5 gpm (9.5 L/min)

### Drilling pattern for valve and piping assembly



### INSTALLATION:

1. With the special wrench provided remove the four vandal-proof screws holding the stainless steel unit cover to valve and piping assembly (two screws at head bracket and two screws at valve). Remove unit cover. Note: head bracket is fastened to unit cover and is removed with it.
2. Mount valve and piping assembly to wall at specified height with screws and anchors provided. Connect supply piping.
3. When looking at the drawing supplied, starting with the cover labeled (A), place horizontal cover on the wall so that the opening straddles the vertical unit. You then insert anchor and screw in the horizontal cover to secure it to the wall.
4. The rest of the horizontal covers will follow in alphabetical order. You will need to leave a 3/4" gap between each horizontal cover.
5. An HP-26 horizontal strap will cover the gap that is left. It also provides support for the sections.
6. Each corner cover is provided with tabs on them so that, the horizontal pieces will fit snugly into

the corner pieces.

7. All copper tubing supplied for crossover fittings on these units are cut to length and should not be altered
8. Replace unit covering and fasten with vandal proof screws.
9. Install showerhead

### Recommended head heights

Men	6'4"
Boys, Senior High	6'0"
Boys, Junior High	5'7"
Boys, Elementary	5'4"
Women	6'0"
Girls, Senior High	5'8"
Girls, Junior High	5'5"
Girls, Elementary	4'2"

### INDIVIDUAL PARTS

C-13	Dome cover
HP-2	Shield (standard unit)
HP-3	Shield (short unit)
HP-5	Soap dish
HP-6	Nameplate
HP-7	Screw
HP-8	Shower head bracket
HP-10	Body cover
HP-10A	O-ring
HP-14	Screw
HP-14A	Washer
HP-14B	Star plastic anchors
HP-21	Endcap
HP-23	TEE (2 required)
HP-26	Cover Strap
HP-30	Crossover Fitting
HY-1A	Piping assembly (standard unit)
HY-1B	Piping assembly (short unit)
J-32B	O-ring

### INDIVIDUAL PARTS

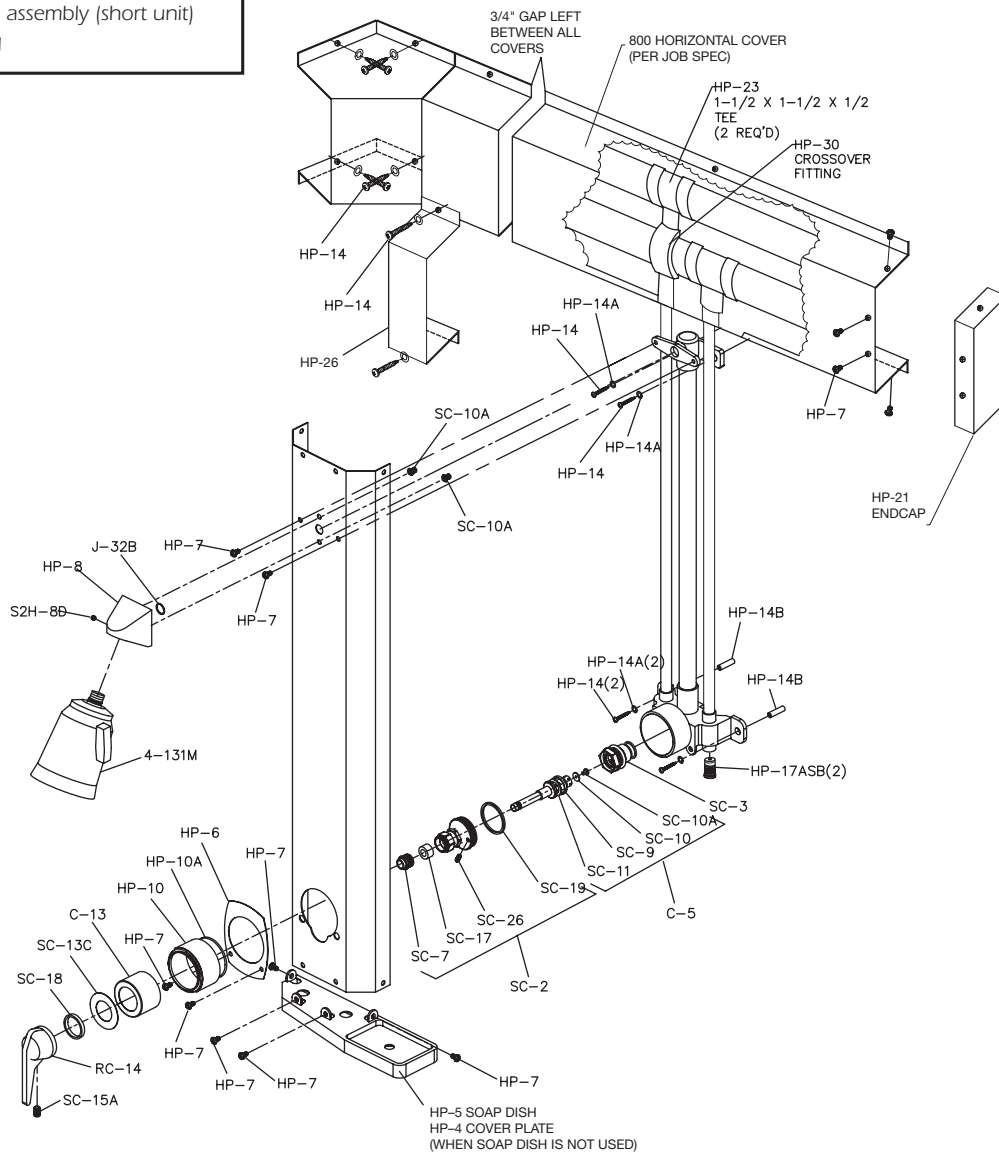
RC-14	Handle
SC-13C	Dial
SC-15A	Set screw
SC-18	Lock nut
S2H-8D	Set screw
SC-3	Renewable seat
SC-7	Packing nut
SC-9	Cold washer retainer
SC-10	Hot washer
SC-10A	Screws
SC-11	Cold washer
SC-17	Packing
SC-19	Cap gasket
SC-26	Limit stop with o-ring
4-131M	Super shower head

### COMPOSITE PARTS

C-5	Spindle assembly
C-50	Renewable seat socket wrench
KIT-B	Washer and gasket kit
SC-2	Cap assembly
SC-3	Renewable seat unit complete
HP-17ASB	Stop assembly

#### Tools required for installation:

Slotted screwdriver, Phillips screwdriver, soldering equipment, adjustable wrench, channel lock pliers, hex socket keys (1/8" and 3/32"), electric drill with 1/4" drill bit, HY-50 screwdriver (provided)



Symmons Industries, Inc. ■ 31 Brooks Drive ■ Braintree, MA 02184  
 (800) 796-6667, (781) 848-2250 ■ Fax (800) 961-9621, (781) 843-3849  
 Website: [www.symmons.com](http://www.symmons.com) ■ Email: [customerservice@symmons.com](mailto:customerservice@symmons.com)

©2007, 2008 Symmons Industries, Inc. Printed in U.S.A. ■ ZV-480 ■ 050208

