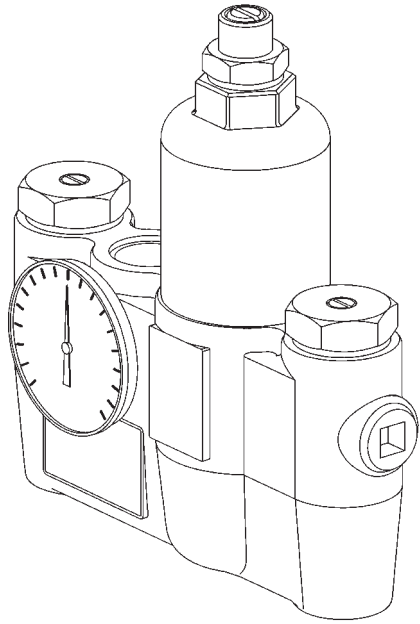


SPEAKMAN®

Thermostatic Mixing Valve SE-362

SPECIFICATION



FEATURES:

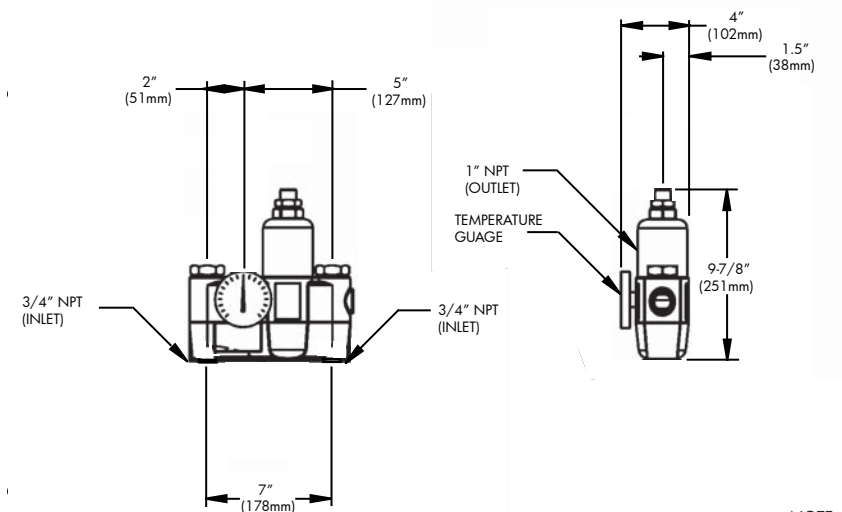
- 36 gpm capacity supports a single shower or multiple eye or eye/face wash stations
- Provides 21 gpm cold water bypass in case of hot water or thermostatic element failure
- Inlet Connections: 3/4" NPT
- Outlet Connection: 1" NPT
- Temperature Range: 65°-95° F
- Maximum Pressure 125 PSI
- Inlet Temperature Hot: 120°-180° F
- Inlet Temperature Cold: 33°-80° F
- Minimum Temperature Differential (from valve set point): 20° F
- Automatic spring check stops
- Valve holds to a +/- 3° F temperature

AVAILABLE FINISHES:

- Rough brass (standard)

WARRANTY:

- 1 year limited



NOTE: 1. All dimensions are in inches (millimeters) unless otherwise specified and are subject to change without notice.

THIS SPACE FOR ARCHITECT/ENGINEER APPROVAL.

SPEAKMAN®

400 ANCHOR MILL ROAD | NEW CASTLE, DE 19720
 P: 800-537-2107 | F: 800-977-2747
 WWW.SPEAKMANCOMPANY.COM



REVISION DATE: MAY 2012