

**S-3552**  
**S-3562-LD**



## Single Lever Faucet



### GENERAL SPECIFICATION

Polished chrome plated, lead free NSF compliant, 4" centerset single lever faucet. All metal shell and belly plate. Ceramic cartridge. Water conserving aerator reduces flow to 1.5 gpm/5.7 L/pm. Copper tube inlets with 1/2" NPSM compression threads. Meets ASME A112.18.1/CSA B125.1, NSF 61 and WaterSense standards CA AB 1953 and VT ACT 193..

#### ☐ **S-3552**

4" lead free centerset single lever faucet with 1-1/4" pop-up drain.

#### ☐ **S-3562-LD**

4" lead free centerset single lever faucet. No drain assembly.

### OPTIONS

SUFFIX	DESCRIPTION
<input type="checkbox"/> BO	0.5 gpm flow control, vandal-resistant
<input type="checkbox"/> LF	1.5 gpm laminar flow control outlet, vandal resistant
<input type="checkbox"/> VR	1.5 aerated flow control, vandal-resistant

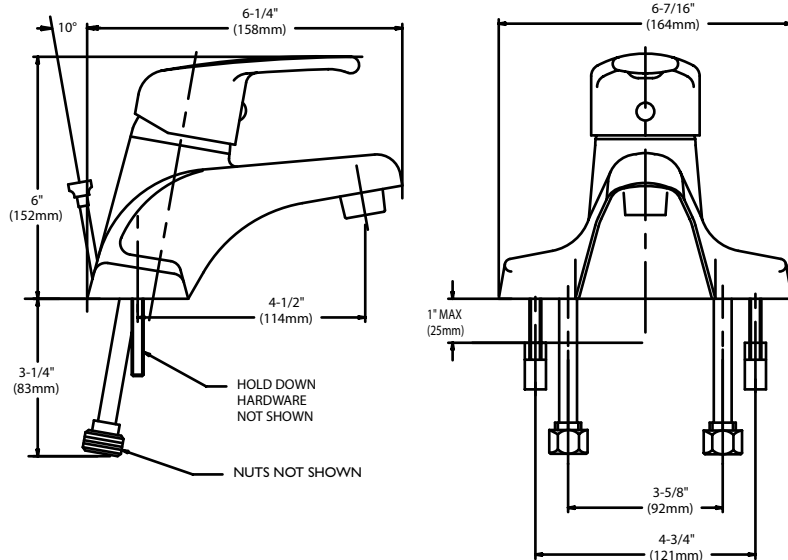
This space for Architect/Engineer approval.



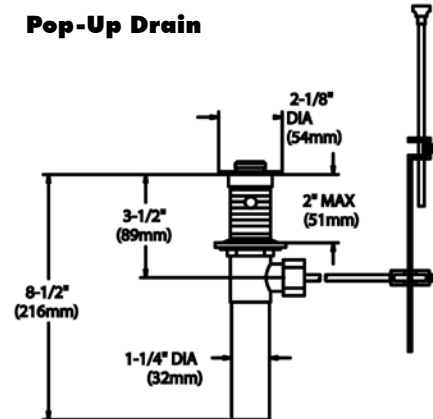
Management Systems Registered to ISO 9001

## Rough-Ins

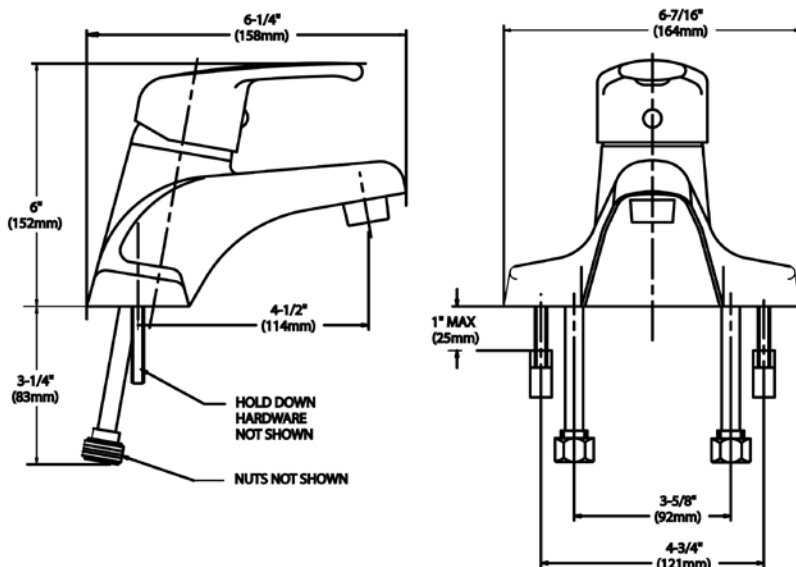
### S-3552



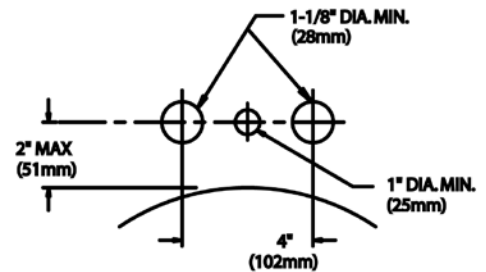
### Pop-Up Drain



### S-3562-LD



### S-3552 S-3562-LD



NOTE: All dimensions are in inches (millimeters) unless otherwise specified and are subject to change without notice. Lavatory inlets are sized for coupling connections. Unless otherwise specified, all inlets are 1/2" NPSM.