



Efficiency Series

Model

**ST-2053-1.6**

Vitreous China Water Closet with Option for Bedpan Lugs

**DESCRIPTION**

Complete elongated vitreous china fixture with option for Bedpan Lugs.

**Models**

- Model ST-2053-1.6 (1.6 gpf/6.0 Lpf)
- Model ST-2053-BPL-1.6 (1.6 gpf/6.0 Lpf) (Bedpan Lugs)



**SPECIFICATIONS**

**Fixture**

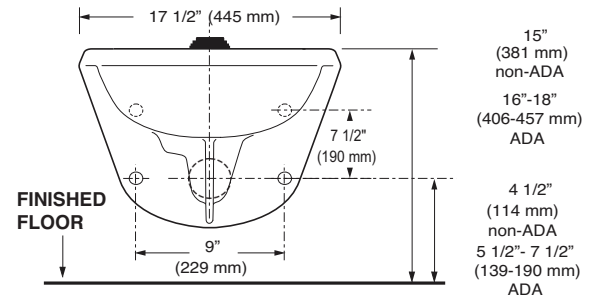
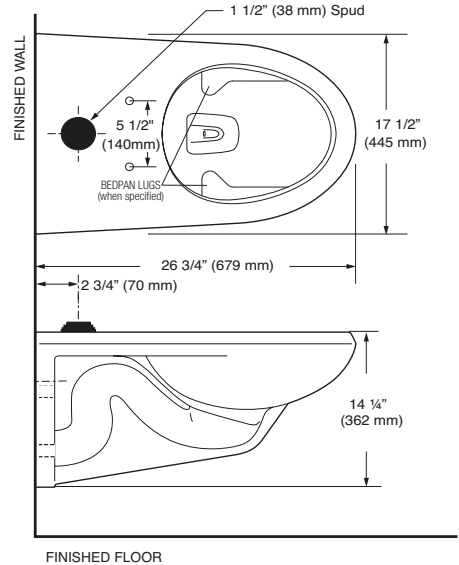
- Wall hung vitreous china
- Siphon jet flushing action
- Elongated bowl
- 1 1/2" I.P.S. top spud inlet
- 2 1/8" fully glazed trapway diameter
- Bedpan lugs (with specified model)
- Mounting hardware, carrier and toilet seat not included
- Integral flushing rim
- Water spot area 9 1/2" x 8 1/4"
- ASME A112.19.2/CSA B45.1

**Colors/Finishes**

- White

**Recommended Accessories**

- Compatible with toilet seat models:  
Olsonite 10CT  
Bemis 1955 CT  
Church Commercial 295CT
- Compatible with carrier model:  
Jay R. Smith 0210Y-M54



Designed to Meet ADA standards when bowl is 17" - 19" high including seat

**Product Specification**  
 Elongated water closet shall be made of vitreous china with a 1 1/2" top spud. Bowl shall be ADA compliant when installed at required height of 17-19" from floor to top of fixture (including seat). Water closet shall have bedpan lugs (when ordered with BPL model). Water Closet shall use 1.6 gpf / 6.0 Lpf. Water Closet shall be Sloan Model ST-2053\_\_\_\_-1.6.



Listed by I.A.P.M.O.

Meets the American Disabilities Guidelines and ANSI A117.1 requirements when installed according to these requirements.



**NOTE:** Plumbing System Requirements

- ✓ Minimum **Flowing** Pressure: 25 PSI
- ✓ Minimum Flow Rate: 18 GPM



This space for Architect/Engineer approval	
Job Name	Date
Model Specified	Quantity
Variations Specified	
Customer/Wholesaler	
Contractor	
Architect	

**SLOAN®**

Sloan Valve Company  
 10500 Seymour Avenue,  
 Franklin Park, IL 60131  
 Phone: 1-800-9-VALVE-9 (982-5839)  
 or 1-847-671-4300  
 Fax: 1-800-447-8329 or 1-847-671-4380  
 www.sloanvalve.com

Copyright © 2011 Sloan Valve Company  
 Rev. 0c (01/11)