

DESCRIPTION

Complete ADA compliant vitreous china water closet.

Flush Cycle

Model ST-2029-A* Universal Closet

(1.1 to 1.6 gpf/4.2 to 6.0 Lpf)

Flush volume is determined by the flushometer used with closet.



SPECIFICATIONS

Water Closet

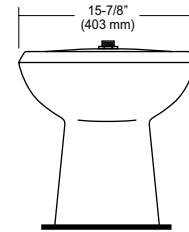
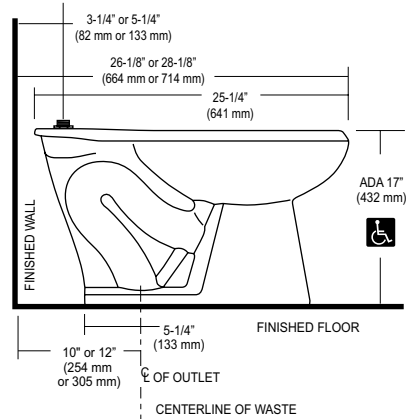
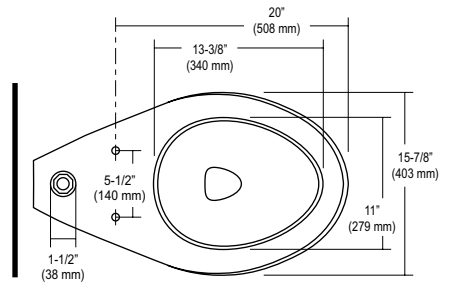
- Vitreous china
- Floor mounted
- ADA Compliant
- Siphon jet flushing action
- 1.5" I.P.S. top spud inlet
- 2" trapway diameter
- Fully glazed trapway
- Integral flushing rim
- Elongated bowl
- Water spot area 10" x 7 1/2"
- Closet bolts and caps included
- Water closet compliant to the applicable sections of ASME A112.19.2/CSA B45.1
- Toilet seat not included

Colors/Finishes

- White

Recommended Accessories

- Compatible with toilet seat models:
 Olsonite 10CT
 Bemis 1955 CT
 Church Commercial 295CT



* Please note that this model is fully interchangeable with Models: ST-2020-A, ST-2022-A, and ST-2023-A and matches all dimensional and performance parameters.

** This model meets the requirements for a High Efficiency Toilet when used with a high efficiency flushometer (1.28 gpf/4.8 Lpf or 1.1/1.6 gpf-4.2/6.0 Lpf dual-flush).



Meets the American Disabilities Guidelines and ANSI A117.1 requirements when installed according to these requirements.

NOTE:

Plumbing System Requirements

- ✓ Minimum **Flowing** Pressure: 25 PSI
- ✓ Maximum Static Pressure: 80 PSI
- ✓ Minimum Flow Rate: 18 gpm



NOTE: All vitreous china dimensions shown in these drawings are nominal. Dimensions can vary within the tolerances established in the governing ASME A112.19.2/CSA B45.1 standard. Please take this into consideration when planning rough-in and plumbing layouts.

Product Specification

Elongated water closet shall be made of vitreous china with a 1-1/2" top spud. Bowl shall be ADA compliant when installed at required height of 17" from floor to top of fixture. Water closet shall be floor mounted with bedpan lugs. Water Closet shall be Sloan Model ST-2029-A-BPL.

This space for Architect/Engineer approval	
Job Name	Date
Model Specified	Quantity
Variations Specified	
Customer/Wholesaler	
Contractor	
Architect	



Sloan Headquarters
 10500 Seymour Avenue
 Franklin Park, IL 60131
 Phone: 1-800-982-5839
 Fax: 1-800-447-8329
 www.sloanvalve.com