

► **Description**

Triple Station Solid Surface Lavatory System Equipped with Sloan Electronic Sensor Technology.

► **Specifications**

Triple Station Lavatory System with Sloan Electronic Sensor Technology with the following features:

- Integrated Head containing pre-plumbed water paths and electronic components preassembled on a single mounting plate for rapid, easy installation/maintenance
- Sloan Electronic Sensors for hands free point of use activation
- Water Conserving, touch free, on-demand sensors detect user's hands at the point of use preventing unintentional activations
- Sensors are protected from user, reducing damage and vandalism
- Optional top filled gravity fed manual Soap Dispensers
- Basin and Integrated Head constructed of durable SloanStone solid surface material
- No visible fasteners or obvious access points on the Integrated Head and Basin
- ADA and TAS lavatory Rim Height Standards achieved in a single design
- Aesthetically pleasing soft contoured one-piece continuous Basin
- Top Access Lid with Recessed Allen Key Activation. T-handle Allen wrench standard
- 1 1/4" Chrome Plated Brass Grid Strainer

► **Sloan Electronics feature:**

- Sloan Adjustable Sensor Technology for reliable performance
- Filtered Solenoid with serviceable Strainer
- Chrome plated brass Spouts
- Water saving 0.5 gpm/1.9 Lpm max. Aerator
- 4 Alkaline AA Batteries — 2 years life at 8,000 cycles/month (Model 62050)
- 6 VDC Plug-in transformer (Model 63000)

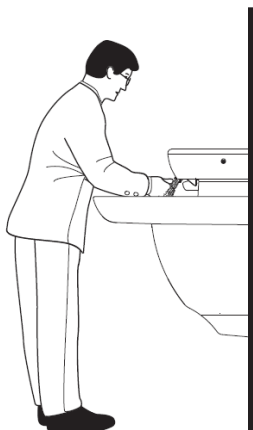
► **Variations**

- FC Manual Soap* Dispenser with Lid Mounted Fill Cap
- MSD Manual Soap Dispenser

► **OPERATION**

OPERATION

As the user's hands enter the beam's effective range, the beam is reflected back into the sensor receiver and activates the solenoid valve allowing water to flow from the spout. Water will flow until user's hands are removed or until the time out limit is reached.



► **The New SloanStone™ Lavatory System — The Perfect Match**

The dependability of Sloan electronics combined with the durability of our SloanStone solid surface material creates the ultimate in vandal resistant lavatory systems with a unique designer style.

Having all the serviceable components accessible from the top, including a water shut-off valve, all the electronics, sensors, solenoids and soap components, gives SloanStone sinks the simplest installation and maintenance available. All of this is kept secure from prying hands by a recessed screw and bracket mechanism on each side of the head, which can be loosened with the supplied T-handle wrench. Therefore, there are no visible fasteners on the unit to invite would-be vandals. The infrared sensors are also recess mounted in a stainless steel plate behind the aerator spray head keeping them out of sight of the user, virtually eliminating potential damage to the sensor windows and making this a true water conserving on-demand unit.

A durable plastic cabinet conceals the drain lines, supply stops and mechanical mixing valve

► **Compliance & Certifications**



The lavatory system is designed to comply with all applicable ADA, UFAS, Texas Accessibility Standards (T.A.S.), and ANSI Z124.3 and Z124.6 accessibility guidelines when mounted at the recommended rim height.

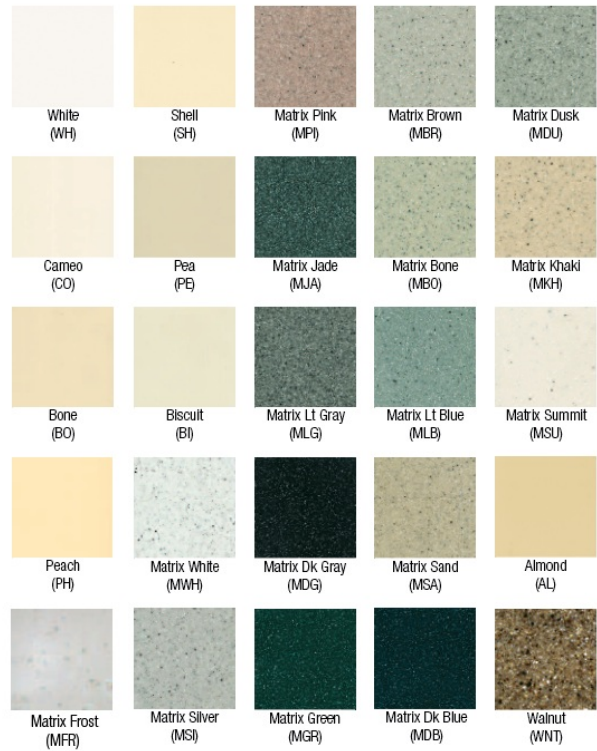
Sloan Electronics are:



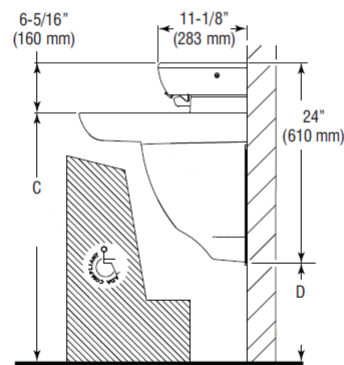
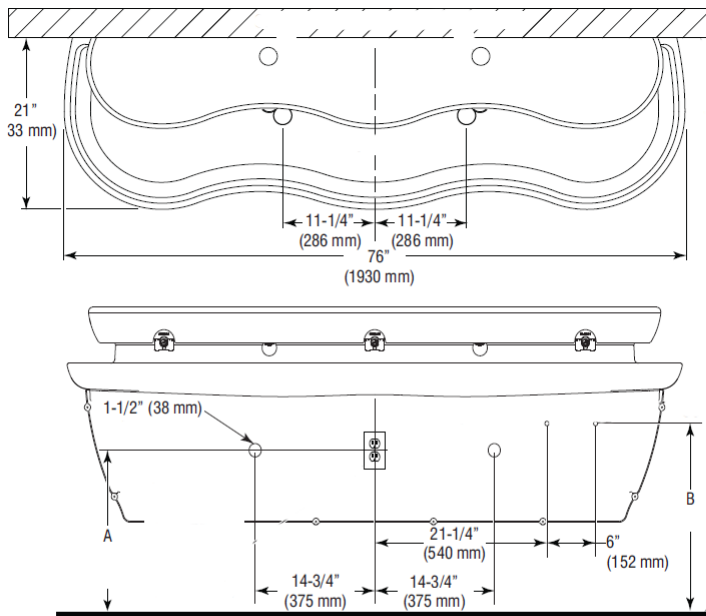
Listed by I.A.P.M.O.


This space for Architect/Engineer Approval

SLOANSTONE COLORS



Expanded color options available at: www.sloanstonesinks.com
For in stock availability and quick-ship options please contact your local Sloan representative.



 DIMENSION	T.A.S.	T.A.S.	A.D.A.
A	20" (508 mm)	22" (559 mm)	24" (610 mm)
B	23" (584 mm)	25" (635 mm)	27" (686 mm)
C	29-3/4" (756 mm)	31-3/4" (806 mm)	33-3/4" (857 mm)
D	12-1/16" (306 mm)	14-1/16" (357 mm)	16-1/16" (408 mm)

► Code Number
16010483

SLOAN 10500 SEYMOUR AVE. • FRANKLIN PARK, • IL. 60131

Ph: 1-800-9-VALVE-9 or 1-847-671-4300 • Fax: 1-800-447-8329 or 1-847-671-4380 • <http://www.sloan.com>